



**Countries:** BAHAMAS, BOLIVIA, BELIZE, CANADA, CHILE, COLOMBIA, COSTA RICA, DOMINICAN REPUBLIC, ECUADOR, EL SALVADOR, GUATEMALA, GUYANA, HAITI, HONDURAS, JAMAICA, MEXICO, ARUBA, NICARAGUA, PANAMA, PERU, TRINIDAD AND TOBAGO, UNITED STATES, URUGUAY, VENEZUELA, Curaçao

**Document ID:** IK1600269

**Availability:** ISIS, FleetISIS, Body Builder, IsSIR

**Revision:** 3

**Major System:** CAB / SLEEPER / HOOD

**Created:** 3/27/2024

**Current Language:** English

**Last Modified:** 11/19/2024

**Other Languages:** NONE

**Author:** Steven Bautz

**Viewed:** 2101

[Less Info](#)

Hide Details

Coding Information

<b>Copy Link</b> 	<b>Copy Relative Link</b> 	<b>Bookmark</b>  <a href="#">View My Bookmarks</a>	<b>Add to Favorites</b> 	<b>Print</b> 	<b>Provide Feedback</b> 	<b>Helpful</b>  23	<b>Not Helpful</b>  2
----------------------	-------------------------------	--	-----------------------------	------------------	-----------------------------	--------------------------	-----------------------------

**Title:** LT Hood Squeak, Rattle and Bouncing

**Applies To:** LT RH Hood Service

## **CHANGE LOG**

Please refer to the change log text box below for recent changes to this article:

11/19/2024 - Updated service part numbers  
06/11/2024 - Added rubber hose option as alternate repair  
04/23/2024 - Added P/N for grease  
03/29/2024 - Initial Article Release

## **DESCRIPTION**

This document will guide the user through Various field repairs to eliminate the engine hood squeaks, rattles, knocking, and bouncing on International LT and RH. For any other hood alignment or adjustment issues, please refer to the current truck service manual for LT and RH for the proper procedures.

## **REFERENCE DOCUMENTS**

iKNOW Article IK1600265 – Hood Guide Installation

iKNOW Article IK1600247 - Hood Gap and Alignment Tolerances

## **SYMPTOM(s)**

The engine hood may squeak, rattle, knock, and bounce during vehicle movement.

### **Diagnostic Trouble Code(s) & Dashboard Indicator Light(s):**

N/A – There are no trouble Codes or Indicator Lights for this symptom.

### **Customer Observations or Concerns:**

The driver may experience excessive noise or see excessive movement of the engine hood during vehicle operation. The noises or movements do not pose a safety concern but are simply an annoyance to the occupants of the truck, provided that both hood latches

are securely engaged.

---

## **SPECIAL TOOL(s) / SOFTWARE**

---

## **SERVICE PARTS INFORMATION**

Part Description	Part Number	Quantity Required	Notes
BRACKET, SUPPORT, HOOD, LH	3810978C6	1	
BRACKET, SUPPORT, HOOD, RH	3810979C6	1	
BOLT, TORX FLAT HD M10-1.5 X 30	3811528C1	4 per side	OK to reuse originals
GREASE, HEAVY CHASSIS	VARIOUS	As needed	Purchase locally
GREASE, MEDIUM CHASSIS (Optional)	4097990R1-400GMKK	As needed	Not available through the parts catalog. Ref: Dow Corning Molykote 44 Medium
RIVET, 3/16" BLIND ALUM - .5" -.625" GRIP	552870C1	2	May substitute
RUBBER, MUD FLAP STRIP - 1/4" THK, 1" X2.5"	N/A	1	Fab in house

---

## **DIAGNOSTIC STEP(s)**

### **Issue #1: Hood Noises – Squeaking or Rattling**

Drive the truck over various road conditions to determine if the hood makes squeaking or rattling noises. The noises generally occur when the truck is rocking over uneven surfaces at speeds generally over 5-10 MPH.

### **Issue #2: Hood Knocking and Bouncing**

Drive the truck over various road conditions to determine if the hood knocks or bounces. The bounce condition can be seen at the top of the hood where it meets the base of the windshield and generally occurs when the truck is moving at speeds of 45 MPH or higher. When the hood starts to bounce it will normally create a knocking noise when it bounces against the hood stops.

**IMPORTANT NOTE:** Before completing any of the diagnostic steps below, verify that the hood is properly mounted and aligned per iKNow Article IK1600247 - Hood Gap and Alignment Tolerances. Also verify the hood stops and hood latch hardware are properly secured and that these parts are not loose, bent, or damaged. If so, replace the damaged/defective parts before proceeding.

Step	Action for Issue #1	Decision

<b>#1</b>	<b>DIAGNOSTIC: Hood Squeaking and or rattling</b>	<b>Yes.</b> Apply heavy chassis grease to both hood stops and hood guides (Left/Right) per repair steps below
	Does the hood squeak or rattle during vehicle operation?	<b>No.</b> No action required

Step	Action for for Issue #1	Decision
<b>#1A</b>	<b>DIAGNOSTIC: Hood Squeaking and or rattling</b>	<b>Yes.</b> Install rubber spacers to hood guides on the hood where they meet the hood stops per the repair steps below (Left/Right)
	Does the hood squeak or rattle during vehicle operation after newly added heavy grease is applied?	<b>No.</b> No action required

Step	Action for Issue #2	Decision
<b>#2</b>	<b>DIAGNOSTIC: Hood Bounce &amp; Knocking</b>	<b>1.</b> Install rubber spacers to hood guides on the hood where they meet the hood stops per repair steps below (Left/Right)
	Does the hood bounce and knock during vehicle operation?	<b>2.</b> No action is required



**Figure 1: Hood Stops as mounted to the Cab**

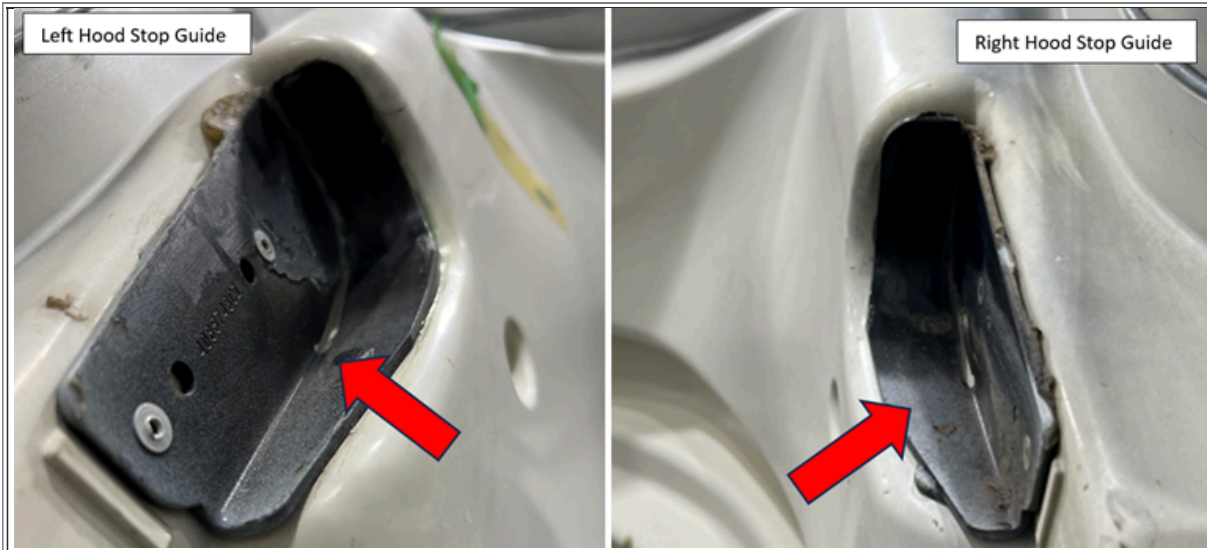


Figure 2: Hood Guides as mounted to the hood B-side

## REPAIR STEP(s)

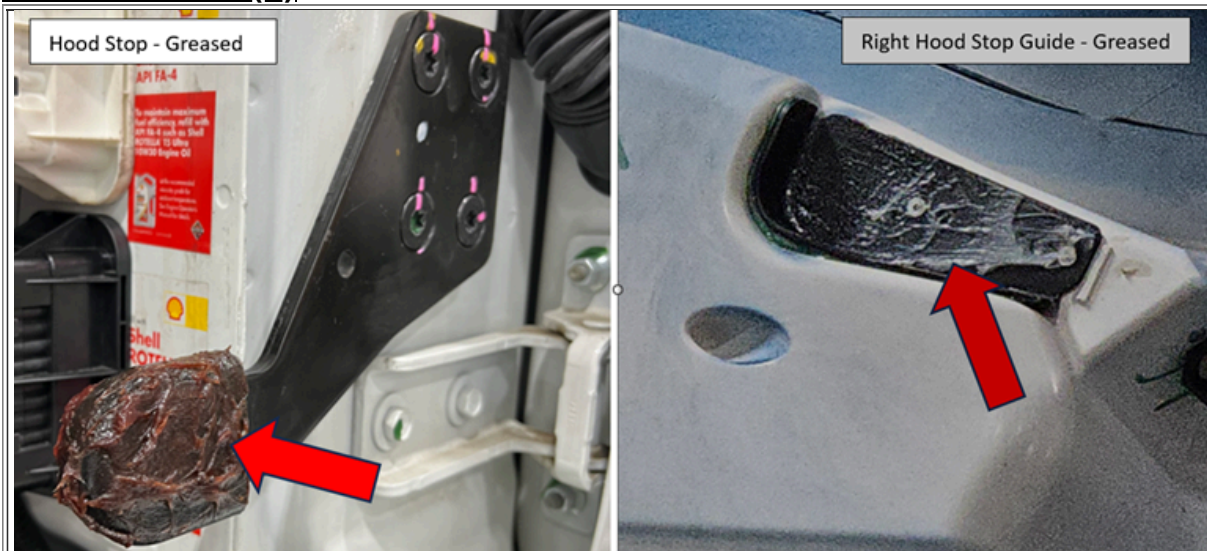


Figure 3: Newly added Grease to Hood Stops and Hood Guides

The standard repair for the hood bouncing and or knocking is to rivet a hand-fabricated rubber spacer onto both hood guides to fill the space between the hood stop and the end of the hood guide when the hood is closed. (See Figure #4) Use a high-quality piece of rubber such as a slice off of a mud flap. The thickness should be approximately 1/4" to 3/16" thick and approximately 1.0" X 2.5" in size. (See Figure #5 Left side is shown, the right side is the opposite)

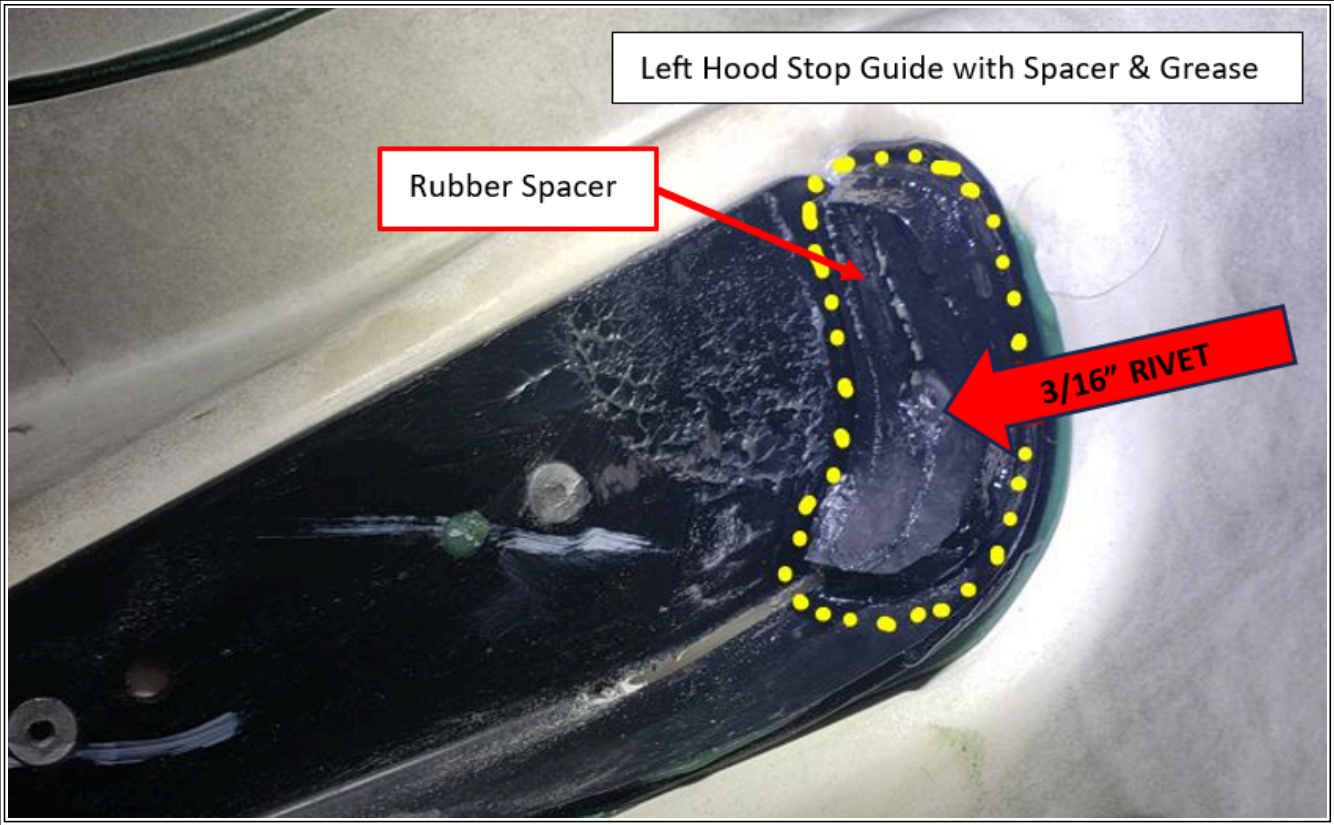


Figure #4: Rubber spacer riveted to hood stop guide with added grease

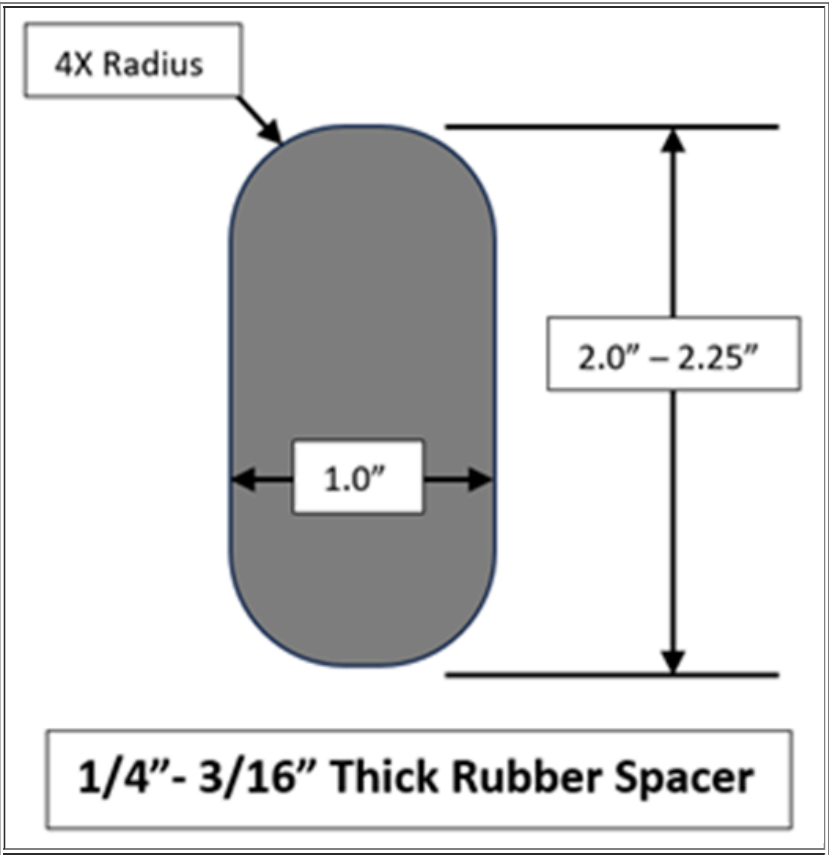


Figure #5: Rubber Spacer Fabrication Drawing

**NOTE:** As an alternate repair method to adding the rubber pad to the hood bracket as described above a short section of rubber hose can be cut and slid over the rubber hood stop and secured with a screw as shown in Figure #6.



Figure #5: Rubber hose section over rubber hood stop shown as an alternate repair option.

---

## **WARRANTY INFORMATION**

### **Warranty Claim Coding:**

Refer to the [Warranty Coding Manual](#) for Group and Noun Codes.

---

### **Standard Repair Time(s):**

Refer to the [SRT Manual](#) for Repair Times

---

## **OTHER RESOURCES**

[Master Service Information Site](#)

 Hide Details

#### Feedback Information

Viewed: 2100

Helpful: 23

Not Helpful: 2

No Feedback Found