

- ATTENTION:**
- GENERAL MANAGER
  - PARTS MANAGER
  - CLAIMS PERSONNEL
  - SERVICE MANAGER

IMPORTANT - All Service Personnel Should Read and Initial in the boxes provided, right.


© 2022 Subaru of America, Inc. All rights reserved.



QUALITY DRIVEN® SERVICE

## SERVICE BULLETIN

**APPLICABILITY:** 2019 MY Outback & Legacy / Key Start Ignition      **NUMBER:** 15-299-22R  
**SUBJECT:** Remote Engine Starter (RES) /      **DATE:** 08/02/22  
Intermittent Horn Beeping Discontinued      **REVISED:** 11/22/24  
Part Number H001SAL003

**INTRODUCTION:**

This bulletin announces an application change to the Remote Engine Starter (RES) control unit on 2019 Outback & Legacy models. The change was incorporated to address a small number of incidents concerning unintentional horn beeping on vehicles fitted with an RES system. A customer may experience 1-4 horn beeps while the vehicle is being driven or at vehicle start-up with the ignition key. This concern may repeat at random times with varied gaps between occurrences. If this issue is duplicated, replacement of the RES control module and installation of the hood switch/ bracket will be required. Please review the parts application information outlined within this bulletin.

**PRODUCTION CHANGE INFORMATION:**

The RES installation kit applicability for MY19 has been changed from H001SAL003 to H001SAL002 (also applicable to MY18).

Part Description	Part Number
MY18 & MY19 Remote Engine Starter	H001SAL002
<b>DISCONTINUED</b> MY19 Remote Engine Starter ECU	H001SAL022
<b>DISCONTINUED</b> MY19 Remote Engine Starter Kit	H001SAL003

**PART INFORMATION:**

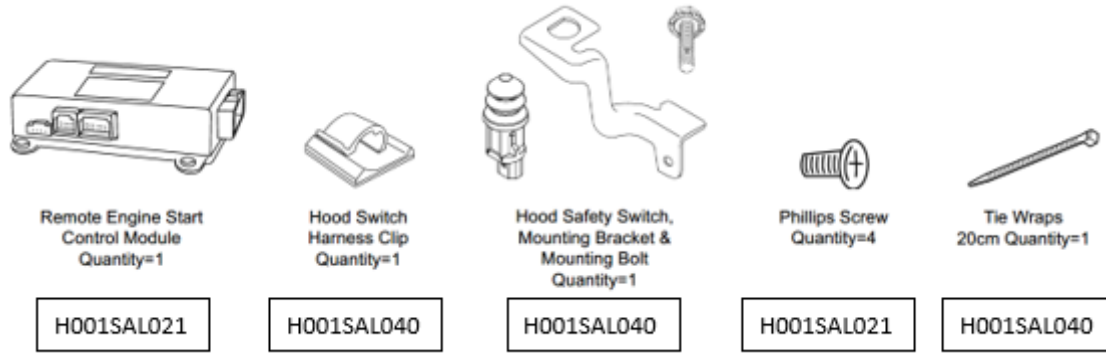
REMINDER: Always order the most up-to-date replacement parts based on the specific VIN being repaired.

Part Description	Part Number
REMOTE ENGINE START ECU	H001SAL021
HOOD SWITCH / BRACKET	H001SAL040

<p><b>CAUTION: VEHICLE SERVICING PERFORMED BY UNTRAINED PERSONS COULD RESULT IN SERIOUS INJURY TO THOSE PERSONS OR TO OTHERS.</b></p> <p>Subaru Service Bulletins are intended for use by professional technicians ONLY. They are written to inform those technicians of conditions that may occur in some vehicles, or to provide information that could assist in the proper servicing of the vehicle. Properly trained technicians have the equipment, tools, safety instructions, and know-how to do the job correctly and safely. If a condition is described, DO NOT assume that this Service Bulletin applies to your vehicle, or that your vehicle will have that condition.</p>	<p style="text-align: center;"><b>Subaru of America, Inc. is ISO 14001 Compliant</b></p> <p>ISO 14001 is the international standard for excellence in Environmental Management Systems. Please recycle or dispose of automotive products in a manner that is friendly to our environment and in accordance with all local, state and federal laws and regulations.</p>
--	--

*Continued...*

BOTH part numbers H001SAL021 (RES Control Module) and H001SAL040 (Hood Switch & Bracket) are required. The components included are shown below.



**IMPORTANT:** Always confirm that the subject vehicle does not already contain the countermeasure part numbers and does contain the discontinued part numbers prior to proceeding with any repairs. See below for details.

**Countermeasure Legacy/Outback Key Start RES Kit**

- Subaru RES Installation Kit Part #H001SAL002
- Voxx RES Control Module Part #4360616 (shown on the upper label)
- SPN0001851 (shown on the lower label)



**Discontinued Legacy/Outback Key Start RES Kit**

- Subaru RES Installation Kit Part #H001SAL003
- Voxx RES Control Module Part #4360783 (Shown on the upper label)
- SPN0003361 (Shown on the lower label)



*Continued...*

## SERVICE PROCEDURE INFORMATION:

**REMINDER:** Customer satisfaction and retention starts with performing quality repairs.

Service procedures for the RES Control Module and the Hood Switch replacement remain unchanged. Always refer to the Accessory Installation Guide and review the full requirements of the repair being performed. The Guide procedures contain information critical to performing an effective repair the first time, every time.

Refer to the Accessory Installation Guide for **2018MY Legacy/Outback with “TURN START.”**  
This guide contains the applicable procedure information for the H001SAL002 kit.

## WARRANTY / CLAIM INFORMATION:

This repair may be submitted for vehicles covered by an active Subaru Added Security Gold plan. The Parts Warranty is 1 year from the date of purchase (regardless of mileage) and for the period of coverage remaining on the Basic New Car Warranty, whichever is longer.

Labor Description	Labor Operation #	Labor Time	Fail Code
REMOTE START CONTROL MODULE R&R AND UNDER HOOD SWITCH INSTALL	B091-109	0.5	ZNH42
REMOTE START TESTING & DIAGNOSIS	C091-100	0.4	

## IMPORTANT REMINDERS:

- SOA strongly discourages the printing and/or local storage of service information as previously released information and electronic publications may be updated at any time.
- Always check for any open recalls or campaigns anytime a vehicle is in for servicing.
- Always refer to STIS for the latest service information before performing any repairs.