



## STAR ONLINE PUBLICATION

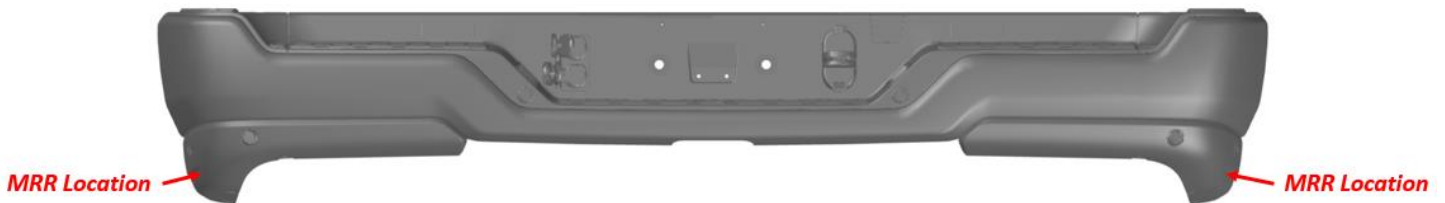


**Case Number:** S2423000049

**Release Date:** November 2024

**Symptom/Vehicle Issue:** Blind Spot Warning Displayed On Instrument Cluster. Mid Range Radar Left And Or Right Setting C00C4-76 C00C5-76 Rear Radar Module Wrong Mounting Position.

**Discussion:** Review the below information if the vehicle has either C00C4-76 or C00C5-76 diagnostic trouble code(s) (DTCs) set.



**Parts Required:** 3M Extreme Hold # 2830 mounting tape.

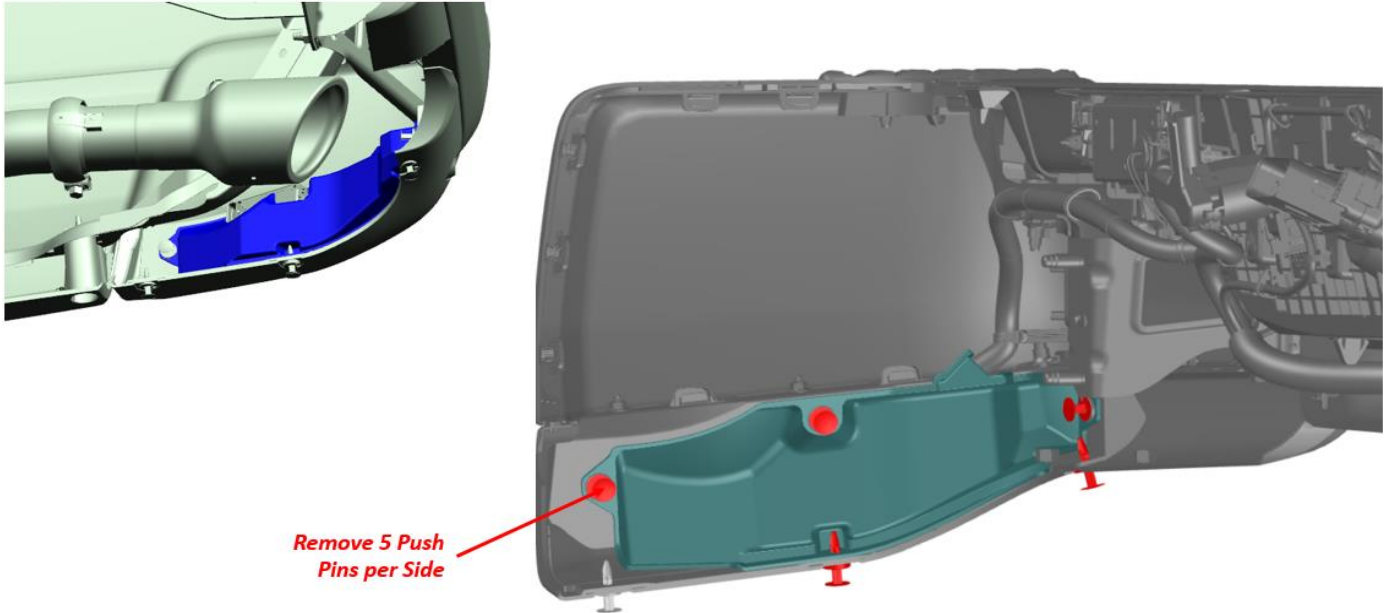
Remove the rear bumper closeout panel for the side(s) indicated by the DTCs found with wiTECH. Refer to service library 08 - Electrical / 8B - Driver Assistance / Assistance System Components / RADARS / Removal and Installation MID-RANGE RADAR – REAR. See Fig 1

This document does not authorize warranty repairs. This communication documents a record of past experiences. STAR Online does not provide any conclusions about what is wrong with the vehicle. Rather, it captures all previous cases known that appear to be similar or related to the vehicle symptom / condition. You are the expert, and you are responsible for deciding on the appropriate course of action.

**Contact STAR Center, or your Technical Assistance Center Via TechConnect, eCONTACT or Service Library entry if no solution is found.**



## STAR ONLINE PUBLICATION



Inspect the Mid Range Radar (MRR) retention snap clip. If the clip is not securing the MRR or the MRR is found not fully snapped in place, use hand pressure to fully seat the module (Fig 2).

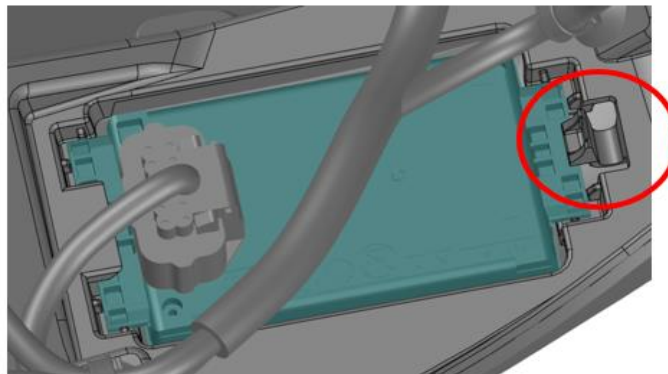


Fig 2

This document does not authorize warranty repairs. This communication documents a record of past experiences. STAR Online does not provide any conclusions about what is wrong with the vehicle. Rather, it captures all previous cases known that appear to be similar or related to the vehicle symptom / condition. You are the expert, and you are responsible for deciding on the appropriate course of action.

**Contact STAR Center, or your Technical Assistance Center Via TechConnect, eCONTACT or Service Library entry if no solution is found.**

