

Problem Details:

- A number of units were moved in the schedule and may have incorrect VIN label, due to model year change

FSPRs, FRACAS, DPR, Zeus:

- Tickets into CAC

Affected Models / Truck options:

- Certain eCascadias that were moved in the schedule, across the Model Year (MY) line
- Population of affected vehicles: 35

Responsible Supplier:

- N/A

Production Containment:

- None

No Yes

Field Containment (short term):

- None

No Yes

Root Cause:

- Vehicle moved in schedule, and assigned new VIN, due to MY change
 - Decision was made to leave them all MY 2023, since some frame rails were already punched; door labels reprinted accordingly.
- (some?) VEPS files updated with MY2024 VIN

No Yes

Long Term Corrective Action Plan:

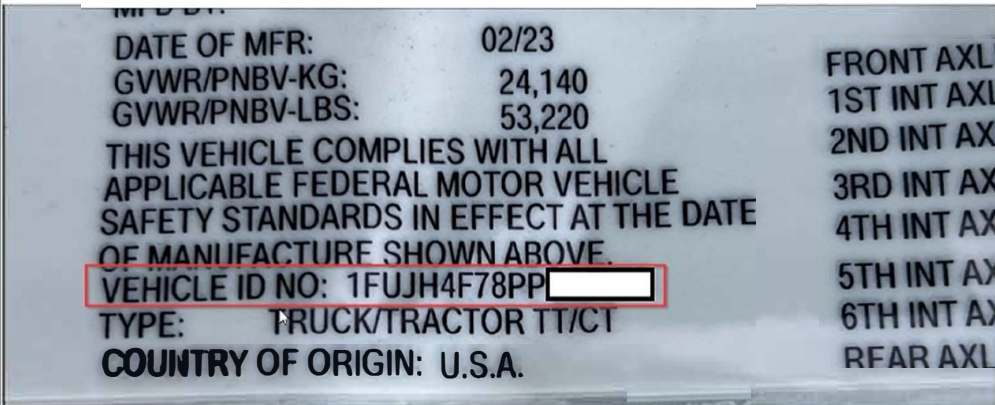
- None

No Yes

Long Term Field Plan:

- Check VIN label on these trucks and set VIN to match, on all ECUs, with DiagnosticLink

No Yes



Part Details

VIN is invalid.

VIN* 1FUJH4F78PP [redacted]
 All 17 Characters