

DTNA Solutions > Service Solutions > Thomas Built Bus
> SS 292 EB2 MCC Controller Update, Intellipark Keep...

SS 292 EB2 MCC Controller Update, Intellipark Keep-Awake

Applicable Vehicles

C2

Symptoms

Battery Draw

Issue

This update aims to resolve a concern where the Bendix Intellipark DECU will stay awake indefinitely in key off scenarios

- This will eliminate a very low constant power draw
- This will reduce customer nuisance complaints that arise from seeing the Intellipark DECU lamps remain on at all times

Solution

Download the latest driver package from ftdichip.com

- The appropriate drivers for a Windows PC can be obtained from <https://ftdichip.com/drivers/vcp-drivers/>->Windows (Desktop)-> setup executable as pictured below (or found in the update package on DTNA Portal)

Labels :

Saf-T-Liner

Add tags

Attachments



 1 Kudo

Comment



DAIMLER TRUCK

EB2 MCC Controller Update

Intellipark Keep-Awake Solution



General

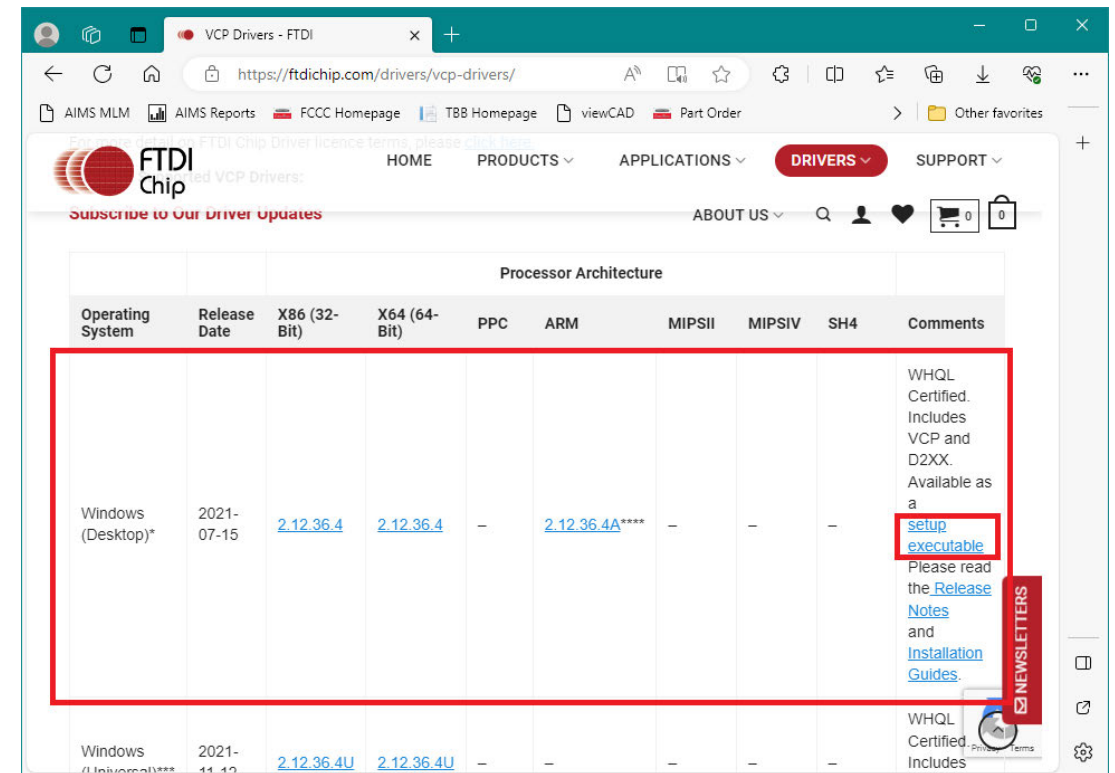
- This update aims to resolve a concern where the Bendix Intellipark DECU will stay awake indefinitely in key off scenarios
- This will eliminate a very low constant power draw
- This will reduce customer nuisance complaints that arise from seeing the Intellipark DECU lamps remain on at all times

Tools Required

- ECC Downloader Software (ECCDownloaderSetup.msi)
- BCC RS485 to USB Adapter (part number BCC# 35-0735)
- FTDI VCP Drivers
- Software Update Hex File (T35-1864 ThomasBus V107 24.06.06.hex)

Step 1: FTDI Driver Installation

- Download the latest driver package from ftdichip.com
- The appropriate drivers for a Windows PC can be obtained from <https://ftdichip.com/drivers/vcp-drivers/>->Windows (Desktop)-> setup executable as pictured below (or found in the update package on DTNA Portal)
- Run the downloaded executable to install the VCP driver package



Step 2: MCC ECC Downloader Installation

- Search for the Download Center on the DTNA Portal
- Locate the EB2 Body A/C Update Package under the FCCC section and download the package
- Install the ECC Downloader Software (ECCDownloaderSetup.msi)

The screenshot shows the DTNA Portal interface. On the left, there is a navigation menu with 'Corporate Inventory' and 'Inventory' sections. The search bar at the top contains 'Download Center'. A dropdown menu is open, showing search results for 'Download Center'. The results are as follows:

Search Results
download center
diagnostic link download
download specpro
express writeup2 download
ddec reports download
Download Center

On the right side of the screenshot, a list of search results is displayed under the 'FCCC' category. The results are as follows:

Search Results
FCCC
FCCC AMETEK INSTRUMENT (B2, S2G)
FCCC AMETEK INSTRUMENT (STEP VAN)
FCCC LOW COOLANT INDICATOR UPDATE
FCCC GM ENGINE PROGRAMMER/DIAG
FCCC JDES (RV)
FCCC MT45G/MT55G ENGINE CONTROLLER C
FCCC STONERIDGE V3.3.0 (RV)
FCCC TPMS UPDATER TOOL
EB2 (JOULEY) PROTERRA PCM V.4.3.1
EB2 (JOULEY) PROTERRA VCU Updates
EB2 (JOULEY) CSI VFD Update Tool
EB2 (JOULEY) BCC/MCC Controller Update Tool

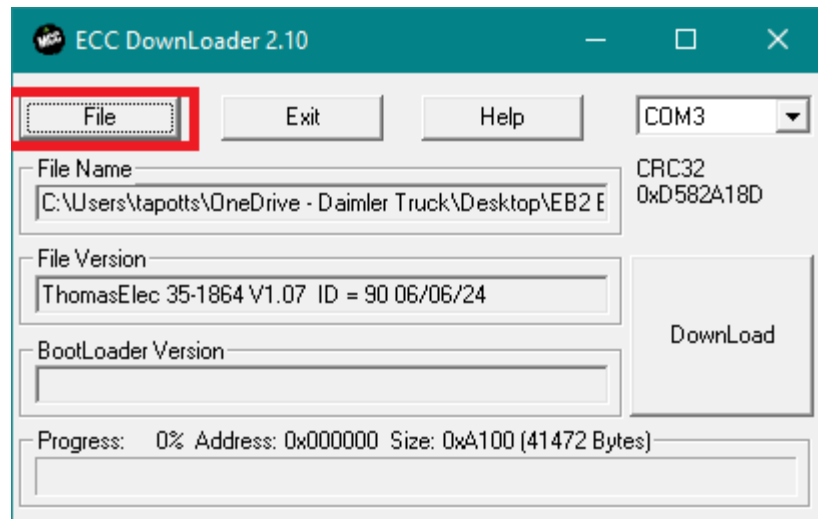
The item 'EB2 (JOULEY) BCC/MCC Controller Update Tool' is highlighted with a red box.

Step 3: Connecting the Adapter Tool to the Bus and Computer

- Connect the RS485 to USB adapter (BCC P/N 35-0735) to the DB9 port located on top of the body AC control board located on the driver side of the vehicle directly behind the low voltage battery access door
- Connect the USB cable to the adapter via the USB-B port on the adapter
- Connect the USB-A end of the USB cable to a Windows PC with ECC Downloader and FTDI VCP drivers installed
- Run the ECC Downloader software

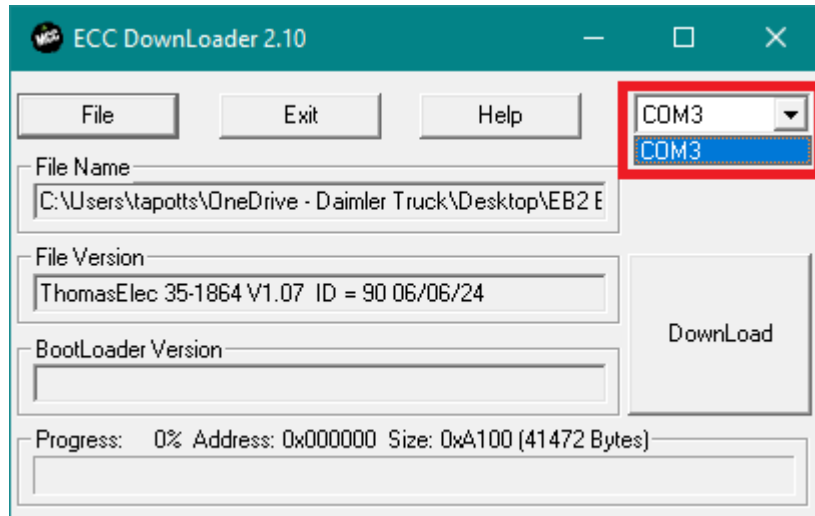
Step 4: Updating EB2 Body AC Controller

- Click File and select the ECU software hex provided in the EB2 Body AC update package



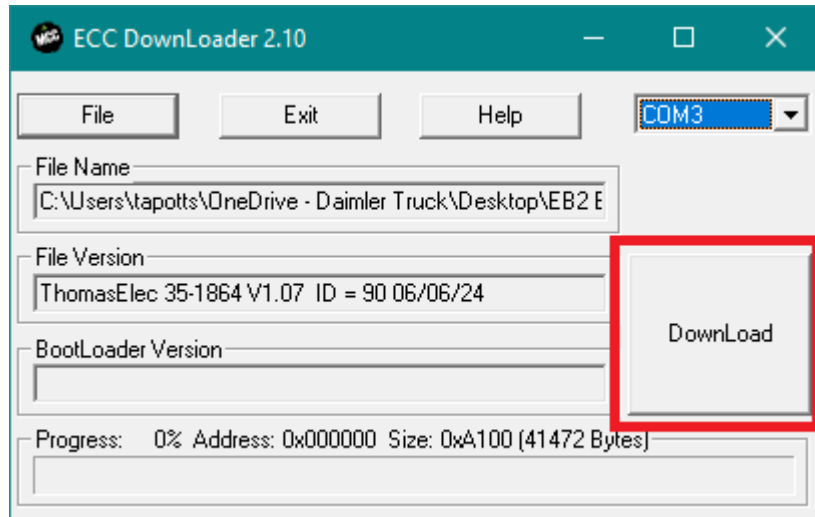
Step 4A: Updating EB2 Body AC Controller Continued...

- Select the appropriate COM port from the dropdown box
- NOTE: The appropriate COM port may be different for each user depending on Windows PC Configuration
- Typically the correct COM port will only appear in the dropdown box when the RS485 adapter is connected to the PC



Step 4B: Updating EB2 Body AC Controller Continued...

- Select the download button to begin flashing the ECU
- Wait until the flashing process is finished and the progress bar is at 100%



Step 5: Validation

- When the update is complete the Intellipark DECU should now properly power down when the key is turned off
- Turn off the vehicle and allow the DECU approximately 5 minutes to power down
- Once the Intellipark DECU powers down the LED indicators will turn off
- Update complete