

Custom Drive Mode Missing from Vehicle Customize - Settings Menu

Service Category Audio/Visual/Telematics

Market USA and Mexico

Section Audio/Video

Toyota Supports ASE Certification 

Applicability

YEAR(S)	MODEL(S)	ADDITIONAL INFORMATION
2024	Tacoma, Tacoma HV	VDS(s): LB5JN, LC5LN, LE5JN, LF5LN

Introduction

Some 2024 Tacoma and Tacoma Hybrid vehicles equipped with an adaptive variable suspension may exhibit a condition where the custom drive mode is missing from the *Vehicle Customize – Settings* menu. The air conditioner supply amplifier software has been updated. Follow the Repair Procedure in this bulletin to address this condition.

Custom Drive Mode Missing from Vehicle Customize - Settings Menu

Warranty Information

For USA Market

OP CODE	DESCRIPTION	TIME	OFF	T1	T2
EL2423	Reprogram Air Conditioner Supply Amplifier	0.4	886H0-AK0##*	99	99

*Warranty claim MUST be submitted with the correct 10-digit OFF. Choose the correct OFF for the vehicle being repaired by searching for the parts in the Electronic Parts Catalog using the VIN filter.

APPLICABLE WARRANTY

- This repair is covered under the Toyota Basic Warranty. This warranty is in effect for 36 months or 36,000 miles, whichever occurs first, from the vehicle's in-service date.
- Warranty application is limited to occurrence of the specified condition described in this bulletin.

For Mexico Market

OP CODE	DESCRIPTION	TIME	OFF	T1	T2
EL2423	Reprogram Air Conditioner Supply Amplifier	0.4	886H0-AK0##*	99	99

*Warranty claim MUST be submitted with the correct 10-digit OFF. Choose the correct OFF for the vehicle being repaired by searching for the parts in the Electronic Parts Catalog using the VIN filter.

APPLICABLE WARRANTY

- This repair is covered under the Toyota Basic Warranty. This warranty is in effect for 36 months or 60,000 kilometers, whichever occurs first, from the vehicle's in-service date.
- Warranty application is limited to occurrence of the specified condition described in this bulletin.

Parts Information

PART NUMBER		PART NAME	QTY
PREVIOUS	NEW		
886H0-AK020	886H0-AK021	Amplifier Assy, Air Conditioner Supply	—

NOTE

The air conditioner supply amplifier assembly should NOT be replaced as part of the Repair Procedure.

Custom Drive Mode Missing from Vehicle Customize - Settings Menu

Required Tools & Equipment

SPECIAL SERVICE TOOLS (SST)	PART NUMBER	QTY
Battery Diagnostic Tool*	DCA-8000P T	1

*Essential SST.

NOTE

Additional SSTs may be ordered by calling 1-800-933-8335 (USA) or 01-800-504-5330 (Mexico) or by visiting *Home – Service Resources – Toyota Special Service Tools (SSTs)*.

REQUIRED EQUIPMENT	SUPPLIER	PART NUMBER	QTY
Techstream ADVi*	ADE	TSADVUNIT	1
Techstream 2.0		TS2UNIT	
Techstream Lite		TSLITEPDLR01	
Techstream Lite (Green Cable)		TSLP2DLR01	

*Essential SST.

NOTE

- Only ONE of the Techstream units listed above is required.
- GTS+ software version 2024.03.004.02 or later is required.
- Additional Techstream units may be ordered by calling Approved Dealer Equipment (ADE) at 1-800-368-6787 (USA) or 01-55-50103041 (Mexico) or by visiting *TIS – Diagnostics – Tools & Equipment – Techstream Order Portal*.
- Use Techstream or an approved J2534 interface to perform flash reprogramming updates. Visit techinfo.toyota.com for more information regarding J2534 reprogramming.

Calibration Information

MODEL	VDS	CALIBRATION ID	
		PREVIOUS	NEW
Tacoma	LB5JN	8865FAK02001	8865FAK02100
	LE5JN		
Tacoma HV	LC5LN		
	LF5LN		

Custom Drive Mode Missing from Vehicle Customize - Settings Menu

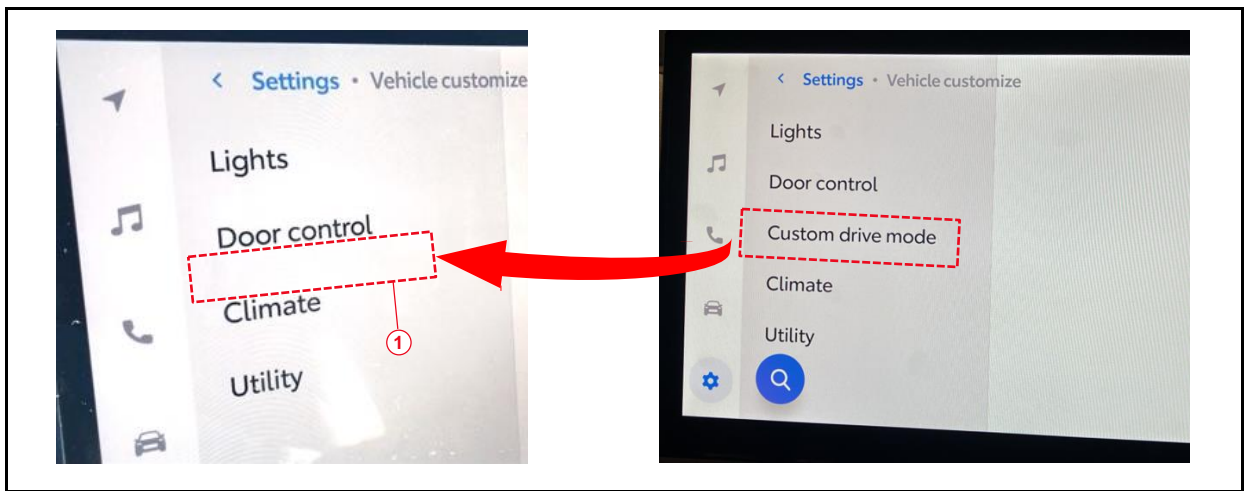
Repair Procedure

1. Confirm the condition exists.

Is the custom drive mode missing from the *Vehicle Customize - Settings* menu, as shown in Figure 1?

- **YES** — Continue to step 2.
- **NO** — This bulletin does NOT apply. Continue diagnosis using the applicable Repair Manual.

Figure 1.



1	Custom Drive Mode Missing
----------	----------------------------------

2. Use GTS+ to confirm the air conditioner supply amplifier assembly calibration ID. Is the air conditioner supply amplifier assembly calibration ID 8865FAK02001?
 - **YES** — Continue to step 3.
 - **NO** — This bulletin does NOT apply. Continue diagnosis using the applicable Repair Manual.

Custom Drive Mode Missing from Vehicle Customize - Settings Menu

Repair Procedure (continue)

- Flash reprogram the air conditioner supply amplifier assembly.

NOTE

- The battery diagnostic tool MUST be used in Power Supply Mode to maintain battery voltage at 13.5V while flash reprogramming the vehicle.
- For details on how to use the battery diagnostic tool, refer to the [DCA-8000 Instruction Manual](#) located at *TIS – Diagnostics – Tools & Equipment – Battery Diagnostics*.

Follow the procedures outlined in [T-SB-0107-20](#), *GTS+ ECU Flash Reprogramming With Security Signature*, and flash the air conditioning amplifier assembly with the NEW calibration file update.

- Using GTS+, perform a Health Check and clear ANY stored DTCs.
- Confirm the custom drive mode is present on the *Vehicle Customize - Settings* menu.