



INSIDE THIS ISSUE:

Technical Information - Page 1
TSB/TIN/ATIN Review - Page 9
Technical Training - Page 10
News & Notes - Page 11

REMAINING 2024 HOLIDAYS

Thanksgiving
November 28-29

Christmas & Winter Shutdown
December 24, 2024-
January 1, 2025

2024 3rd Quarter Technician Quiz - TQ032024

Available from July 1 -
September 30, 2024

Dealer personnel must successfully complete the quiz no later than:
September 30, 2024



We encourage dealers to participate with the Tech Talk Newsletter by submitting tips, information, precautions or anything else that would be of benefit to Mitsubishi Motors and other technicians. Please email us at: servicesupport@na.mitsubishi-motors.com.



TECH TALK - VOLUME 282 SEPTEMBER/OCTOBER 2024

TECHNICAL INFORMATION: TOE-IN SERVICE SPECIFICATION ITEMS

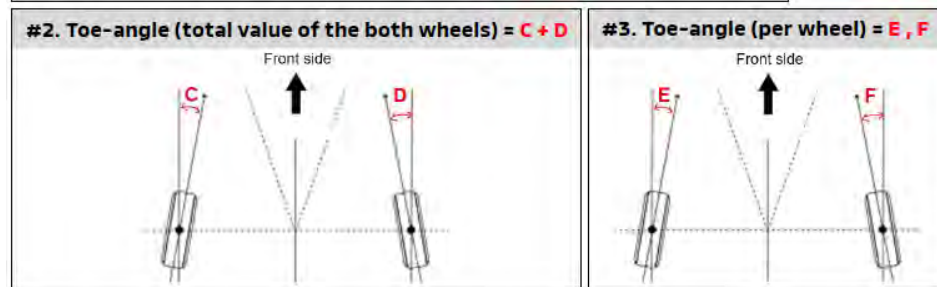
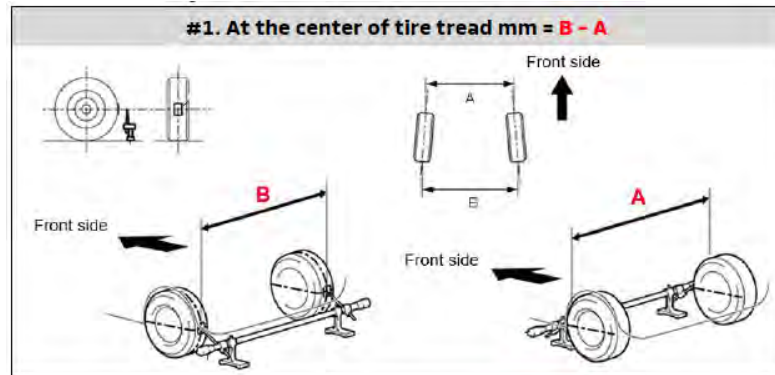
AFFECTED VEHICLES

ALL

CONCERN

Depending on the model, several toe-in service specification items are listed in the Service Manual. This article introduces each specification item, so please utilize this information during wheel alignment measurement/adjustment.

Toe-in Service Specification Items:



NOTE:

1. For vehicles with toe-in service specification items #1 and #2 listed in the Service Manual, if either item is within the standard value, it can be determined that the other item also meets the standard value.
2. Standard values differ depending on the vehicle, so be sure to check the Service Manual.

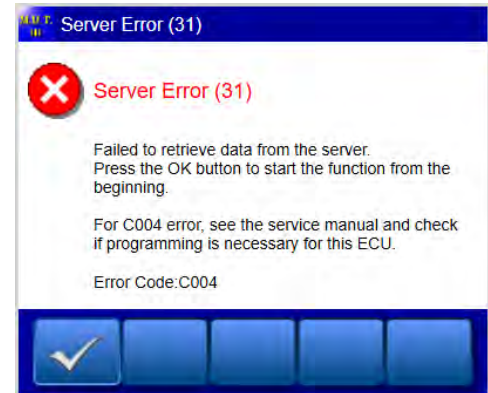
TECHNICAL INFORMATION: CONFIGURATION CANNOT BE COMPLETED AFTER ECU REPLACEMENT

AFFECTED VEHICLES

2022 - 2024 Outlander and 2023 - 2025 Outlander Plug-In Hybrid

CONCERN

When a configuration is performed after ECU replacement, MUT-III error code "C004" may be displayed, and the configuration may not be completed. This issue can be addressed by following the "correct" procedure below.



CAUSES OF THE MUT-III ERROR

1. Attempting configuration with a blank ECU: Some spare ECUs are supplied without ECU data (blank ECU). After replacing the blank ECU, programming must be performed according to the Service Manual, before configuration.
2. Wrong ECU data is written: If the wrong ECU data (for another vehicle) is written by mistake, configuration may not be allowed. Worst case scenario, the ECU may crash.

CORRECT PROCEDURE AFTER REPLACING A BLANK ECU

Be sure to perform "programming" according to the Service Manual before configuration".

1. Select and program the correct ECU data for the vehicle.
2. If you find incorrect data is written to the ECU, please select "**programming**" on MUT-3 **instead** of "reprogramming" and rewrite the correct ECU data. "Reprogramming" does not allow searching for ECU data files.
3. The work procedure is different for each ECU, please be sure to check the Service Manual first.

TECHNICAL INFORMATION: CORRECT TIGHTENING TORQUE FOR BATTERY (-) TERMINAL

AFFECTED VEHICLES

2022 - 2024 Outlander

CONCERN

If the tightening torque of the (-) battery terminal mounting nut is too much, the edge of the battery (-) terminal may damage (-) pole, resulting in the terminal not being properly secured. This article provides the correct tightening torque for the battery (-) terminal.

Damaged battery (-) pole



(-) Terminal structure

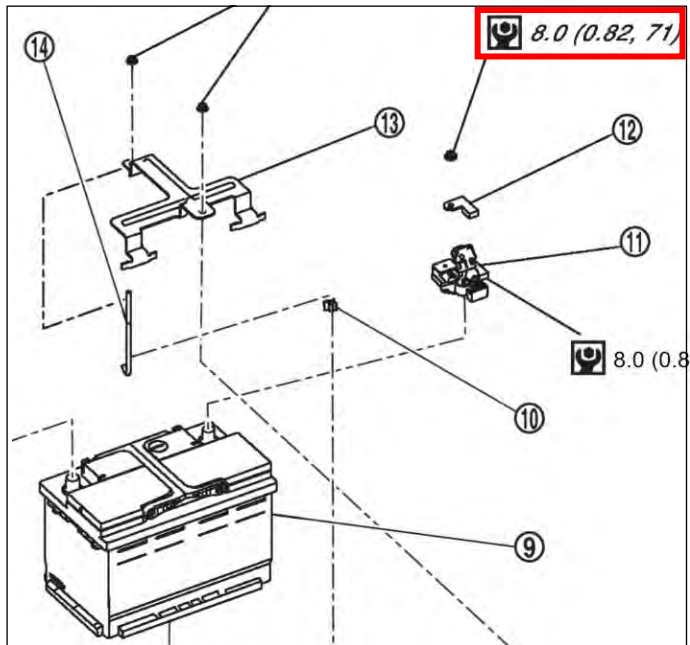


Edge of (-) terminal



Correct Tightening Torque for Battery (-) Terminal

OUTLANDER : 8.0 N·m



TECHNICAL INFORMATION: ODOMETER PROGRAMMING AFTER INSTRUMENT CLUSTER METER REPLACEMENT

AFFECTED VEHICLES

2022 - 2024 Outlander
2023 - 2025 Outlander Plug-in Hybrid

CONCERN

After replacement of the Instrument Cluster Meter, odometer programming from an outside vendor is **NOT** necessary. Once the new meter is installed, the odometer reading is added to the meter via the SRS Airbag Module. **DO NOT** send the meter to an outside vendor for 3rd party mileage programming.

TECHNICAL INFORMATION: HVAC INOPERABLE

AFFECTED VEHICLES

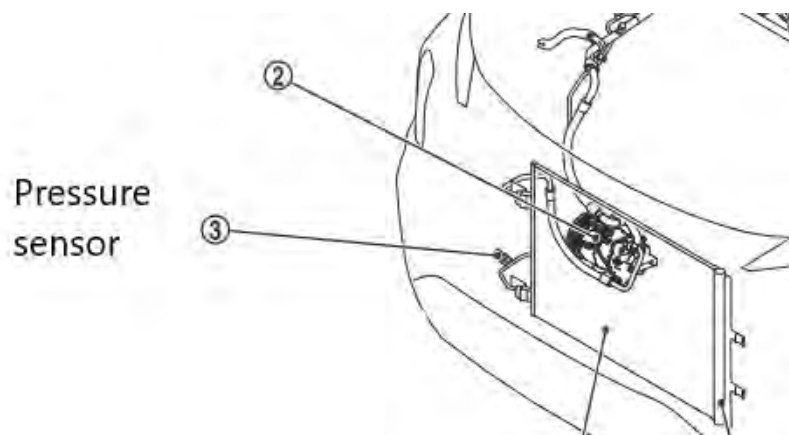
2022 - 2024 Outlander

CONCERN

A customer may report the AC is not operating; however a test of all systems confirms refrigerant levels are good but the compressor clutch will not engage. Checking the MFI ECU AC Pressure Switch will confirm that the pressure is correct.

HVAC-ECU requests compressor activation from the ECM. If the ECM has an HVAC Pressure Sensor value that is not within a certain range (seen in data monitor for ECM) it will not request the IPDM to activate the compressor and the HVAC Data Monitor request item will show "OFF". The Pressure Sensor reads from 0 to 5V with 5V = 500 psi. The pressure should be around 1V.

A few cases have been reported where rodent damage has occurred to the Pressure Switch wiring behind the front bumper causing the concern.



TECHNICAL INFORMATION: VARIOUS WARRANTY CLAIMS REGARDING ILLUMINATED SCUFF PLATES

AFFECTED VEHICLES

2022 - 2024 Outlander and 2023 - 2025 Outlander Plug-In Hybrid

PART INFORMATION

MZ315221 Scuff Plates with LED Illumination

CONCERN #1

Scuff plates have a dull finish.

RECOMMENDATION

The protective film was not removed during PDI. Remove film to reveal correct product finish.

- DETAIL INSPECTION**
- Detailing Before PDI**
- Remove RAP-film and remove RAP-film residue²
 - Inspect paint for damage
-
- Detailing After PDI**
- Wash exterior body panels, and check for water leaks after washing
 - Wash and inspect wheels, remove glue residue, and apply tire dressing
 - Check door and trunk/cargo area opening and under hood cleanliness
 - Inspect body panels and paint for damage, alignment and finish quality
 - Inspect all glass for damage and cleanliness inside and out
 - Inspect all moldings, trim, and chrome and remove protective tape.
 - Inspect weatherstripping and rubber moldings
 - Clean interior and check interior panel/trim fit
 - Check for stains, dirt, scuffs, and damage
 - Check that all door edge guards are in place
 - Check cargo net¹ and install accessories¹
 - Install paper mats on all floors
 - Check headliner and sun visor cleanliness

The protective film can be identified by an "R" and "L" on the front scuff plates. The rear scuff plates do not have any identification characteristics.



When removed, the finish is much more reflective and does not stain.



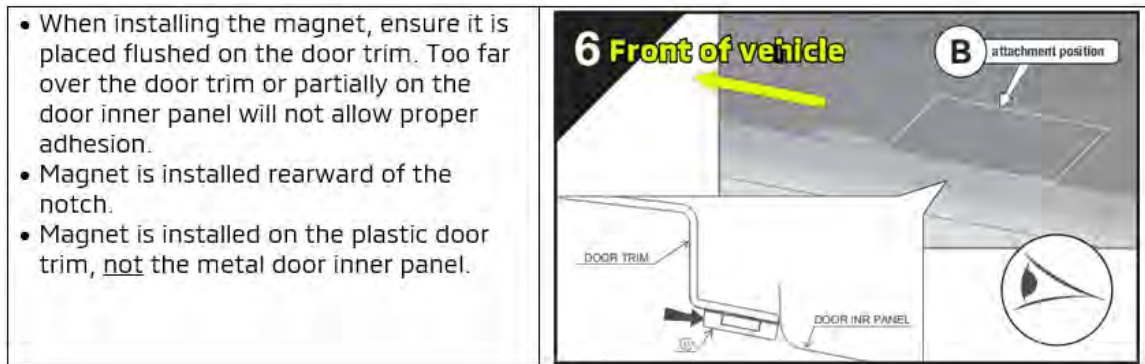
TECHNICAL INFORMATION: VARIOUS WARRANTY CLAIMS REGARDING ILLUMINATED SCUFF PLATES(Continued)

CONCERN #2

Illuminated scuff plate is inoperable.

RECOMMENDATION

Magnet is no longer attached to the door panel or was installed in the wrong location. Inspect bottom of door panel for presence and/or proper location of magnet. The magnet should be positioned on the rearward side of the inner door panel notch.

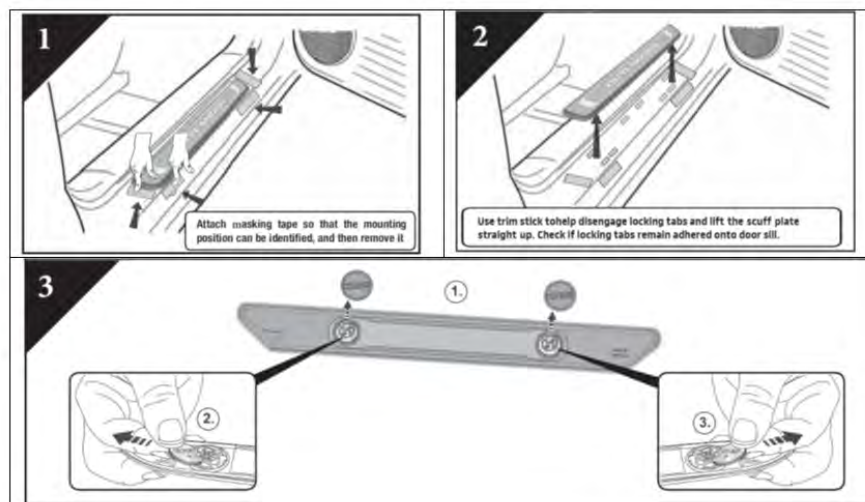


CONCERN #3

Scuff plate no longer illuminates due to low/dead battery or short circuit when batteries were previously changed.

RECOMMENDATION

Check the battery voltage before ordering replacement scuff plates. Remove 2 batteries (CR2430) and check battery voltage. Typical cutoff voltage is 2.0-2.25 volts. If battery voltage is low/completely discharged, replace with 2 new batteries.



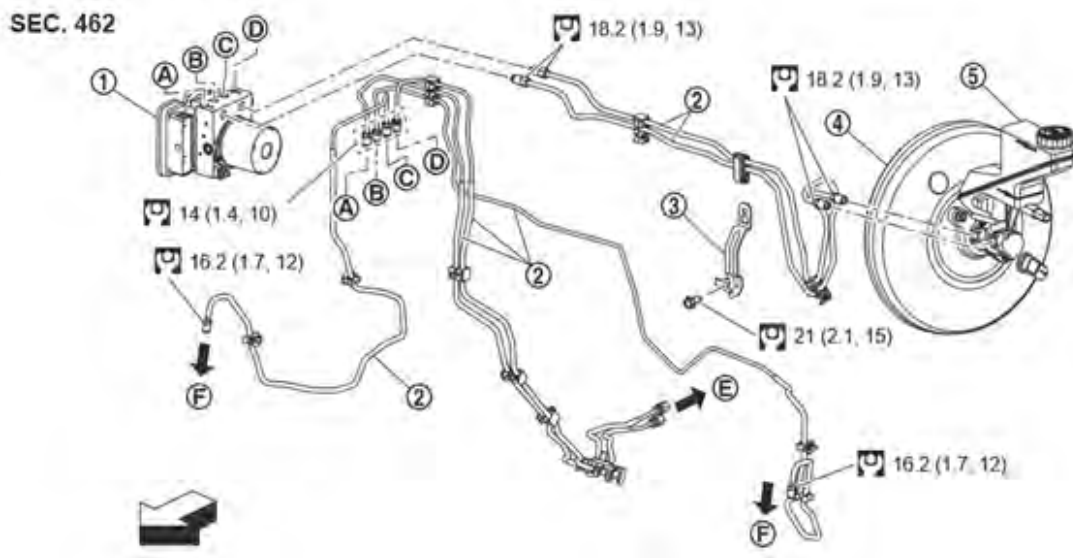
TECHNICAL INFORMATION: LOW BRAKE FLUID LEVEL

AFFECTED VEHICLES

2022 - 2024 Outlander

CONCERN

If you encounter a vehicle with low brake fluid level, inspect the system for leaks. Depending on the fluid level, DTC C105D-7B may be set in ABS. If a leak is found at one of the hydraulic lines at the ABS Actuator and Control Unit, inspect the line and seating area for damage. If no damage is noted, reattach the hydraulic line and torque to proper specifications, then recheck for leakage. Bleed the system to eliminate air and road test to verify proper operation. In most cases, it is not necessary to replace the ABS Actuator and Control Unit.



TECHNICAL INFORMATION: GUIDELINES TO REDUCE FRONT AXLE THREAD DAMAGE

AFFECTED VEHICLES

2022 - 2024 Outlander (may be applicable to other models)

CONCERN

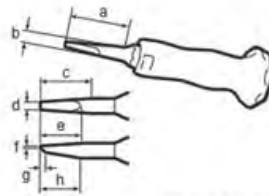
Please refer to the guidelines below to help reduce the damage to the threaded portion of the front axle. Improper removal techniques can result in unnecessary axle replacement. The use of a thread file can also be helpful in cases where there is minimal distortion.

TECHNICAL INFORMATION: GUIDELINES TO REDUCE FRONT AXLE THREAD DAMAGE (Continued)

KV40108800

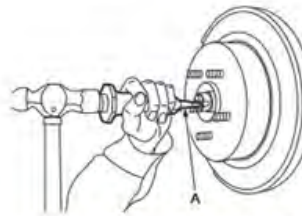
Lock nut chisel

- a: 44.5 mm (1.752 in)
- b: 10 mm (0.39 in) dia
- c: 31 mm (1.22 in)
- d: 4.5 mm (0.177 in)
- e: 26 mm (1.02 in)
- f: 0.4 mm (0.016 in)
- g: 4 mm (0.16 in)
- h: 24 mm (0.94 in)



CF100AE0AA00USA

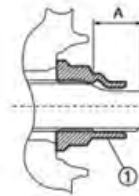
6. Using lock nut chisel (SST: KV40108800) (A), release stacked area of wheel hub lock nut.



CF100AEVAA00USA

NOTE

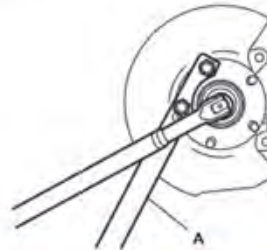
Stacked area is about 22.5 mm (0.886 in) (A) of wheel hub lock nut ①.



10

FRONT AXLE

7. Loosen wheel hub lock nut, using a hub lock nut wrench (SST: KV40104000) (A).



CF100A

CAUTION

- Never use a power tool.
- When rotation of locknut does not turn smoothly, release stacked area is performed again.





TSB/TIN/ATIN/SC/SR REVIEW

Since Tech Talk 281, the following bulletins have been published:

PUBLISH DATE	TSB/ATIN/TIN #	SUBJECT	MODELS
7/23/2024	TSB-21-54-002REV	SOFTWARE UPDATE FOR SMARTPHONE LINK DISPLAY AUDIO - REVISED	2020 Outlander, 2020 Outlander Plug-in Hybrid and 2020 Outlander Sport / RVR
	TSB-19-54-013REV	SOFTWARE UPDATE FOR SMARTPHONE LINK DISPLAY AUDIO - REVISED	2018 Eclipse Cross, 2017-2018 Outlander, 2018 Outlander Plug-in Hybrid, and 2017-2018 Outlander Sport / RVR
	TSB-18-54-006REV	DISPLAY AUDIO SOFTWARE UPDATE FOR REAR VIEW CAMERA DISPLAYING WHILE DRIVING - REVISED	2014-2017 Outlander
	TSB-16-54-001REV	FUSE HANDS FREE LINK SYSTEM: UNSTABLE BLUETOOTH CONNECTION - REVISED	2012-2016 i-MiEV, 2011-2015 LANCER (RALLIART, SPORTBACK, EVOLUTION), 2014-2015 MIRAGE, 2010-2016 OUTLANDER AND 2011-2016 OUTLANDER SPORT / RVR
	TSB-20-54-002REV	POOR SOUND QUALITY DURING HANDS-FREE PHONE CALL WITH APPLE CAR PLAY - REVISED	2017-2019 OUTLANDER AND 2018-2019 OUTLANDER PLUG-IN HYBRID
8/7/2024	TSB-24-00-005REV	NEW MODEL FEATURES AND SERVICE INFORMATION - 2025 OUTLANDER PLUG-IN HYBRID - REVISED	2025 OUTLANDER PLUG-IN HYBRID
	TSB-24-00-003	GENERAL PDI PROCEDURES FOR 2025 OUTLANDER PLUG-IN HYBRID	2025 OUTLANDER PLUG-IN HYBRID
	TSB-24-00-004	TECHNICAL SPECIFICATIONS - 2025 OUTLANDER PLUG-IN HYBRID	2025 OUTLANDER PLUG-IN HYBRID
	TSB-24-34-003	REAR SHOCK ABSORBER DESCRIPTION CORRECTION - SERVICE MANUAL REVISION	2022-2024 OUTLANDER AND 2023-2024 OUTLANDER PLUG-IN HYBRID
	TSB-24-33-002	FRONT COIL SPRING AND STRUT DESCRIPTION CORRECTION - SERVICE MANUAL REVISION	2022-2024 OUTLANDER
	TSB-24-54-002REV	SOFTWARE UPDATE FOR SMARTPHONE LINK AUDIO DISPLAY - SERVICE MANUAL REVISION	2020 OUTLANDER, 2020-2021 OUTLANDER PLUG-IN HYBRID AND 2020-2021 OUTLANDER SPORT / RVR
8/12/2024	TSB-24-37-001REV	NOISE AND VIBRATION WHEN TURNING THE STEERING WHEEL - REVISED	2022-2024 OUTLANDER AND 2023-2024 OUTLANDER PLUG-IN HYBRID
9/5/2024	TSB-24-54-006	DRIVER SIDE DOOR MIRROR DOES NOT OPEN/CLOSE ON VEHICLES EQUIPPED WITH AUTOMATIC DRIVER POSITIONER SYSTEM	2022-2024 OUTLANDER AND 2023-2024 OUTLANDER PLUG-IN HYBRID
9/9/2024	TIN-24-00-007	GEORGIA DEPARTMENT OF MOTOR VEHICLES (DMV) - TAKATA RECALLS	CERTAIN 2004-2007 LANCER, 2006-2009 RAIDER, AND 2012-2017 i-MiEV
	TSB-24-54-003	BATTERY MANAGEMENT UNIT (BMU) AND TRACTION BATTERY - SERVICE MANUAL REVISION	2023-2025 OUTLANDER PLUG-IN HYBRID
	TSB-24-54-004	CORRECTION TO AUDIO, VISUAL, AND NAVIGATION SYSTEM - SERVICE MANUAL REVISION	2022-2024 OUTLANDER
	TSB-24-54-005	CORRECTION TO REAR MOTOR REMOVAL AND INSTALLATION PROCESS - SERVICE MANUAL REVISION	2023-2025 OUTLANDER PLUG-IN HYBRID
	TSB-24-23-005	CORRECTION TO INSPECTION PROCEDURE FOR TRANSAXLE PROPORTIONAL VALVE CHECK - SERVICE MANUAL REVISION	2022-2024 OUTLANDER
	TSB-24-00-006	TECHNICAL SPECIFICATIONS - 2025 ECLIPSE CROSS	2025 ECLIPSE CROSS

IMPORTANT

Affected new or used vehicle inventory must be repaired before the vehicle is sold or delivered. Dealers must check their vehicle inventory VINs on the Warranty Superscreen to verify whether the vehicle is involved in a recall campaign.

It is a violation of Federal Law for a dealer to sell or deliver a new motor vehicle or any new / used motor vehicle equipment (including a tire) covered by the notification under a sale or lease until the defect or non-compliance is remedied.





TECHNICAL TRAINING COURSE SCHEDULE

Atlanta Technical Training Center - Southeast Region
 801 Interstate West Parkway, Lithia Spring, GA 30122
 (770) 732-3000 Airport: Atlanta (ATL)

September '24				
Monday	Tuesday	Wednesday	Thursday	Friday
2	3	4	5	6
	ADAS	ADAS	CES	CES
9	10	11	12	13
	ER1	ER1	ER1	CVT F2F
16	17	18	19	20
	EECS	EECS	EECS	EECS
23	24	25	26	27
	PHEVG2TT V-ILT	PHEVG2TT V-ILT	CVT V-ILT	CVT V-ILT
30	1	2	3	4

October '24				
Monday	Tuesday	Wednesday	Thursday	Friday
30	1	2	3	4
7	8	9	10	11
	MED4 V-ILT	STV4 V-ILT	EL1 V-ILT	EL1 V-ILT
14	15	16	17	18
	ER1	ER1	ER1	CVT F2F
21	22	23	24	25
	EECS	EECS	EECS	EECS
28	29	30	31	1
	CC1	CC1	CES	CES

New Jersey Technical Training Center - Northeast Region
 516 Heron Drive, Swedesboro NJ 08085
 (856) 467-7100 Airport: Philadelphia (PHL)

September '24				
Monday	Tuesday	Wednesday	Thursday	Friday
2	3	4	5	6
	MED4 V-ILT	STV4 V-ILT	EL1 V-ILT	EL1 V-ILT
9	10	11	12	13
	CES	CES	ADAS	ADAS
16	17	18	19	20
	PHEVG2TT F2F	PHEVG2TT F2F	CES	CES
23	24	25	26	27
	EECS	EECS	EECS	EECS
30	1	2	3	4
	CES	CES	ADAS	ADAS

October '24				
Monday	Tuesday	Wednesday	Thursday	Friday
30	1	2	3	4
	CES	CES	ADAS	ADAS
7	8	9	10	11
	EECS	EECS	EECS	EECS
14	15	16	17	18
	ER1	ER1	ER1	CVT F2F
21	22	23	24	25
	PHEVG2TT V-ILT	PHEVG2TT V-ILT	PHEVG2TT V-ILT	PHEVG2TT V-ILT
28	29	30	31	1
	CES	CES	ADAS	ADAS

Franklin Technical Training Center
 1552 Columbia Avenue, Franklin TN 37064
 (657) 238-2891 Airport: Nashville (BNA)

September '24				
Monday	Tuesday	Wednesday	Thursday	Friday
2	3	4	5	6
	MED4 V-ILT	STV4 V-ILT	EL1 V-ILT	EL1 V-ILT
9	10	11	12	13
16	17	18	19	20
23	24	25	26	27
30	1	2	3	4

October '24				
Monday	Tuesday	Wednesday	Thursday	Friday
30	1	2	3	4
	MED4 V-ILT	STV4 V-ILT	EL1 V-ILT	EL1 V-ILT
9	10	11	12	13
16	17	18	19	20
23	24	25	26	27
30	1	2	3	4

Course Title	Days	Code	Prerequisites
Engine & Emission Control Systems (ILT)	4	EECS	ES1W, EL1, STV4, MED4, ME3W
Engine Repair (ILT)	3	ER1	ES1W, EL1, STV4, MED4, ME3W
Climate Control (ILT)	2	CC1	ES1W, EL1, STV4, MED4, ME3W
Plug-In Hybrid Electric Vehicle (Virtual)	2	PHEVG2TT	EL1, STV4, MED4, DGPHEVWT
MED4 (Virtual)	1	MED4	ME3W
STV4 (Virtual)	1	STV4	No Prerequisites
Electrical Systems 1 (Virtual)	2	EL1	ES1W
Advanced Driver Assistance Systems (ILT)	2	ADAS21TT	ES1W, EL1, STV4, MED4, ME3W
Chassis Electrical Systems	2	CES22TT	EL1, STV4, MED4, ME3W, ES1W
CVT OVERHAUL PROCEDURES	1	CVT	STV4, MED4, EL1, ATFW

Classes shaded in Green are (V-ILT) Virtual Instructor Led Training

MMNA technical on site training is not shaded

CVT Overhaul Procedures will be offered in two training formats.

1. CVT V-ILT online instructor-led.
2. CVT F2F in center training.





NEWS RELEASE

August 20, 2024
No.

三菱自動車工業株式会社 広報部
〒108-8410 東京都港区芝浦三丁目1番21号
msb Tamachi 田町ステーションタワー 5
03-6852-4274・4276
www.mitsubishi-motors.com

Team Mitsubishi Ralliart's Triton Finishes in Fifth Place Overall in Asia Cross Country Rally 2024: Team Determined to Make a Comeback Next Year

Tokyo, August 20, 2024 – Mitsubishi Motors Corporation (hereafter, Mitsubishi Motors) announced that Team Mitsubishi Ralliart, for which the company provides technical support, has won fifth place overall in the Asia Cross Country Rally (hereafter, AXCR) 2024, held in Thailand from August 11 to 17, with the Triton¹ (T1 specification, or modified cross-country vehicle). The total distance covered was 2,075.54 kilometers (km), including 939.58 km² of special stages, and Katsuhiko Taguchi finished in fifth place overall with a total time of 15 hours, 34 minutes and 52 seconds.

In the overall standings, Kazuto Koide, who competed for the first time, placed 24th, and Sakchai Hantrakul placed 27th. Chayapon Yotha retired from first place overall in Leg 5, ending in 42nd overall.



Taguchi and Yasui, who placed 5th overall



All-new Triton (T1 specification)

This year's AXCR held its ceremonial start on August 11 at the landmark clock tower in Surat Thani, Thailand. The rally proper began with Leg 1 the following day, and Leg 2 took the participants from Surat Thani to Hua Hin, covering over 550 km and making it the longest section of the entire competition. Leg 3 was a special stage in the Hua Hin area, and with Leg 4, the rally headed to Kanchanaburi, on an undulating track through mountainous terrain. Leg 4 was the toughest special stage of the six days, as many teams struggled with the route over the mountains with rocky terrain, and more than 10 teams were penalized for failing to finish within the allowed time. Leg 5 was the longest special stage in this year's competition, covering 228.87 km in the Kanchanaburi area, and the competition concluded with Leg 6 on August 17, finishing at Skywalk Avenue, close to the new tourist attraction Skywalk Kanchanaburi.

To read more, click here: <https://media.mitsubishicars.com/en-US/channels/latest-news>



NEWS RELEASE

MITSUBISHI MOTORS NORTH AMERICA, INC.

Public Relations Department
4031 Aspen Grove Drive, Suite 650
Franklin, TN 37068

www.mitsubishicars.com

MITSUBISHI MOTORS: WHAT'S NEW FOR 2025

- 2025 Outlander receives mid-cycle refresh including revised front and rear styling, revised interior, and more
- 2025 Outlander Plug-in Hybrid adds heated steering wheel and panoramic sunroof on SEL trims, front heated-seats standard on all trims
- 2025 Eclipse Cross adds Rear Seat Alert, updated Black Edition now available on Eclipse Cross SE trim
- My MITSUBISHI CONNECT adds Safeguard 5-year free trial and Remote Services 12-month free trial¹

FRANKLIN, Tenn., Aug. 6, 2024 – Following a long-running commitment to deliver high quality, top value, leading-edge technology vehicles in the U.S., [Mitsubishi Motors North America, Inc.](http://www.mitsubishicars.com) (MMNA) today announced its 2025 model year lineup. A mid-cycle refresh for 2025 transforms the interior and exterior of Outlander while a host of model updates for Eclipse Cross, Outlander Sport, and Outlander Plug-in Hybrid offer increased comfort and connectivity.

Pricing and full details on all models will be announced closer to each vehicle's launch.

2025 OUTLANDER

Building on the overwhelming success of the 2022 Outlander since the launch of the new-generation model, the 2025 Outlander looks to continue its award-winning ways and record-setting sales pace with a mid-cycle refresh. Full details on the update will be available closer to the vehicle's launch in the first quarter of 2025, but highlights are revised front and rear styling and greater levels of luxury in materials and design throughout the interior.

Pricing for the three-row, seven-passenger 2025 Outlander will be released later this year.

2025 OUTLANDER PLUG-IN HYBRID

As the world's first plug-in hybrid electric SUV, and still the world's best-selling all-wheel drive plug-in hybrid SUV², the Outlander Plug-in Hybrid boasts the same advanced vehicle architecture as the internal combustion engine (ICE)-powered Outlander, which has set sales record after sales record, garnering praise from consumers and accolades and awards across the industry.

New for 2025, the Outlander Plug-in Hybrid offers standard front heated seats on all trims, and a heated steering wheel and panoramic sunroof as standard on SEL trims. My MITSUBISHI CONNECT, MMNA's connected car service, further adds a Safeguard 5-year free trial and a Remote Services 12-month free trial for the 2025 model year.¹

Outlander Plug-in Hybrid continues to boast its top-of-the-line Platinum Edition trim featuring a special Black Diamond paint with an Alloy Silver roof color combination, and the popular Black Edition returns for the 2025 model year on the SEL trim.

Featuring an award-winning mix of confident, quiet, eco-friendly motoring, every Outlander Plug-in Hybrid sports powerful front and rear motors and a 20-kWh drive battery, as well as Mitsubishi Motors' Super-All Wheel Control twin-motor 4WD system³. EPA-rated for 38 miles of all-electric driving range, Outlander Plug-in Hybrid also boasts 420 miles of overall driving range.

2025 ECLIPSE CROSS

The 2025 Eclipse Cross retains its predecessor's chiseled front and rear design enhancements and adds standard Rear Seat Alert. For Eclipse Cross SE trims, an available updated Black Edition now offers revised front lip and rear spoiler. For LE trims and up, My MITSUBISHI CONNECT adds a Safeguard 5-year free trial and a Remote Services 12-month free trial¹.

Every 2025 Eclipse Cross is outfitted with Mitsubishi Motors' signature motorsport-derived S-AWC all-wheel drive system as standard equipment, which helps in various weather conditions and types of road surfaces³.

2025 OUTLANDER SPORT

Long one of MMNA's best-selling models, the Outlander Sport combines an adventurous spirit with great value in an award-winning package for the 2025 model year. Every Outlander Sport is fully adventure-ready with Mitsubishi's All-Wheel Control (AWC) included as standard equipment⁴.

To honor Mitsubishi's commitment to safety, MY24 Outlander Sport will add Rear Seat Alert as standard to October production models, and this important feature will continue to be standard equipment for MY25 Outlander Sport.

WARRANTY

Every Mitsubishi Motors vehicle is delivered with peace of mind through the brand's 10-year/100,000-mile powertrain warranty. Also standard on every model is a five-year/60,000-mile limited warranty, a seven-year/100,000-mile corrosion/perforation warranty, five-year/unlimited-mile roadside assistance, and a 2-year/30,000-mile maintenance program¹.

For more information on the full lineup of Mitsubishi vehicles, visit [MitsubishiCars.com](https://www.mitsubishicars.com).

For more information on MMNA, visit media.mitsubishicars.com.

DISCLAIMERS

1. Available in certain Outlander PHEV, Outlander, and Eclipse Cross models. See your local Mitsubishi dealer for details. Standard yearly subscription costs apply at the conclusion of each trial period. See [MitsubishiCars.com/cvsprivacy](https://www.mitsubishicars.com/cvsprivacy) and [MitsubishiCars.com/cvsterms](https://www.mitsubishicars.com/cvsterms) for additional important information.
2. Based on S&P Global Mobility New Registrations of plug-in hybrid and all SUV body styles for Jan 2013 - Oct 2022 compiled from governments & other sources (where available). Captures 95% of global new vehicle volumes in more than 80 countries.
3. Super All-Wheel Control (S-AWC) incorporates Active Yaw Control (AYC) to realize the AWC concept at a very high level. This Integrated Vehicle Dynamics Control System manages the driving forces and braking forces of the four wheels to help realize vehicle behavior that is faithful to the operation by the driver under a variety of driving conditions. S-AWC is not a substitute for safe and careful driving.
4. All-Wheel Control (AWC) is an Integrated Vehicle Dynamics Control System that manages the driving forces and braking forces of the four wheels to help realize vehicle behavior that is faithful to the operation by the driver under a variety of driving conditions. AWC is not a substitute for safe and careful driving.

