



TECHNICAL SERVICE BULLETIN

ISSUE DATE:	11/17/2022
SERVICE BULLETIN SUBJECT:	ZX5A01 Vehicle Controller and Charge Port B Software Retrofit
VINs or MODELS AFFECTED:	Service Specified Buses
COMPLETE BY:	Next Service Opportunity
SERVICE BULLETIN #:	SC-22-152
LABOR OPERATION CODE:	HC57Z

NOTICE! It is expected that this process may require up to one hour per bus. Please schedule appropriately to minimize vehicle downtime.

ZX5A01 VEHICLE CONTROLLER AND CHARGE PORT B SOFTWARE RETROFIT

Description:

The procedure describes the process of updating the vehicle controller to the latest version.

Tools/Parts Required:

Tools and Supplies Required:

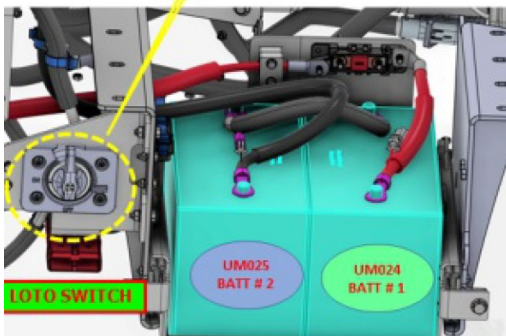
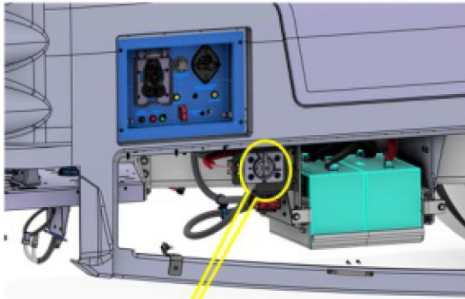
- Service Laptop with Proterra Diagnostic Tool
- Nexiq Tool

Software Required:

- 059576 SOFTWARE, VEHICLE CONTROLLER Rev D

Procedure:

1. Navigate to the following location on the Service Laptop.
<\\bus.local\files\Engineering\Service Bulletins\Service Bulletin Files for SC-22-152>
2. Copy the file in that location to a secure place on the desktop of the Service Laptop.
3. Ensure that the bus is powered on at the curbside rear of the bus. This includes the “LOTO” Switch shown and the “Master Disconnect Switch”.



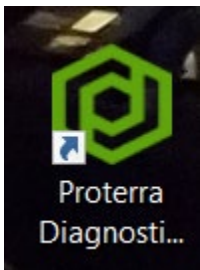
4. Open the panel on the rear deck to access the programming port. Turn on the work light and connect the laptop to the green diagnostic port shown in the second photograph below.



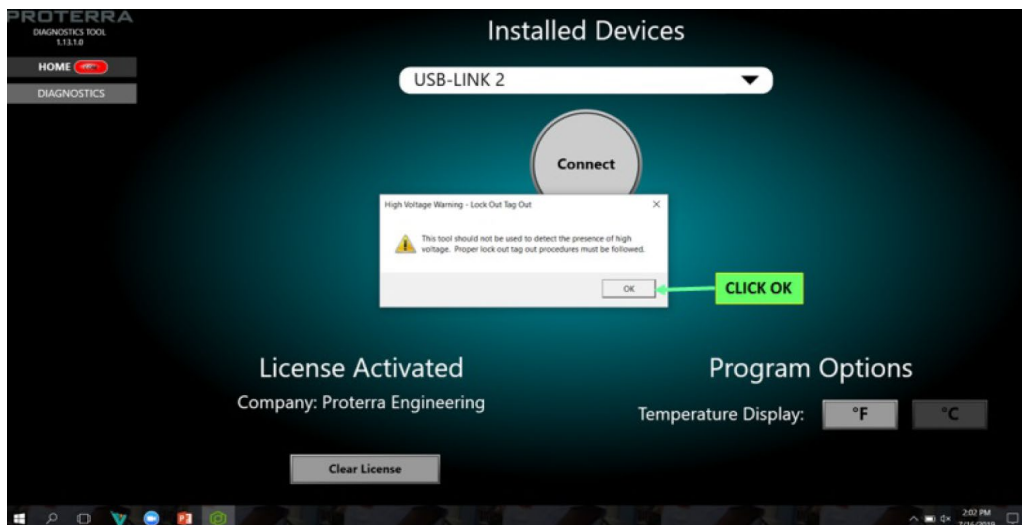
5. Turn on the “Hazard” switch in the Driver’s Workplace.



6. Connect the Nexiq Tool to the programming laptop.
7. Start the Proterra Diagnostic Tool by double clicking the icon on the desktop.



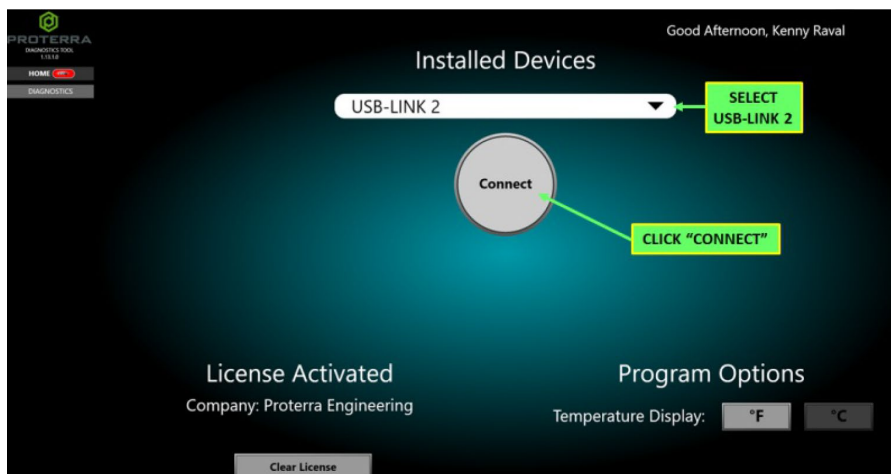
8. The following screen appears. Click “OK” to dismiss the pop-up warning after reading it.



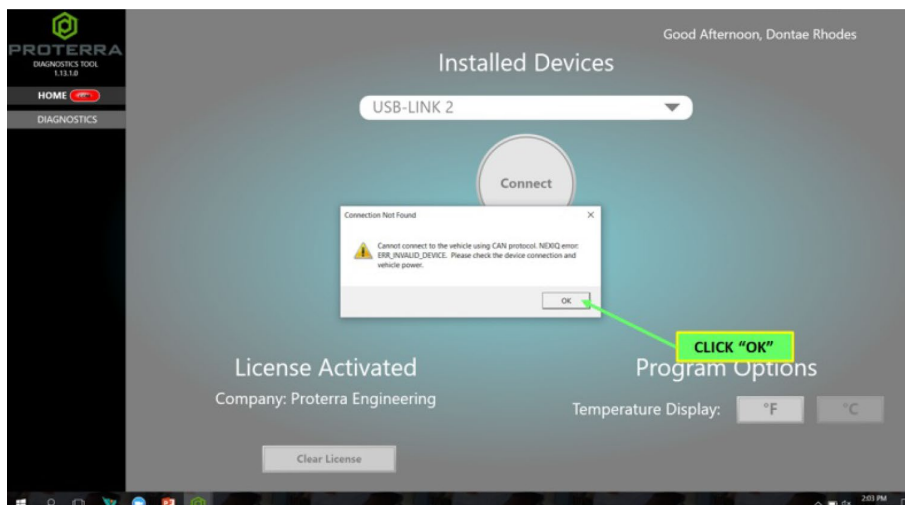
9. Select the “USB-Link 2” option in the drop down.



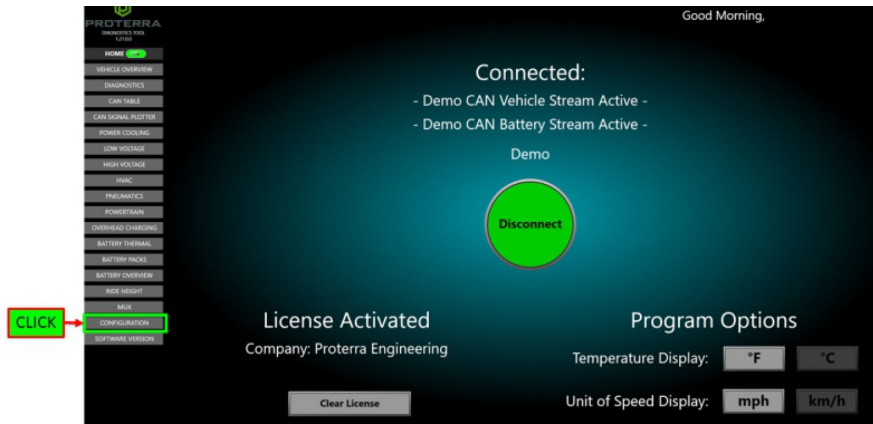
10. Click the “Connect” button that appears.



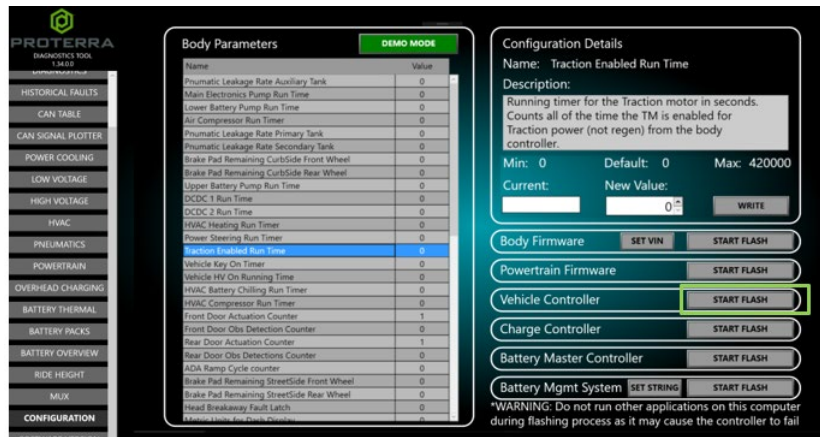
11. If the following screen appears, click the “OK” button to dismiss the pop-up window.



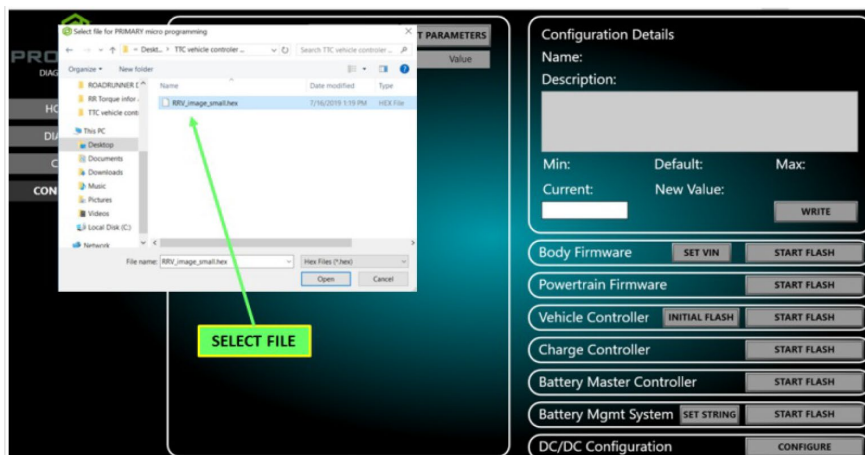
12. The following screen appears. Click the “Configuration” button as shown.



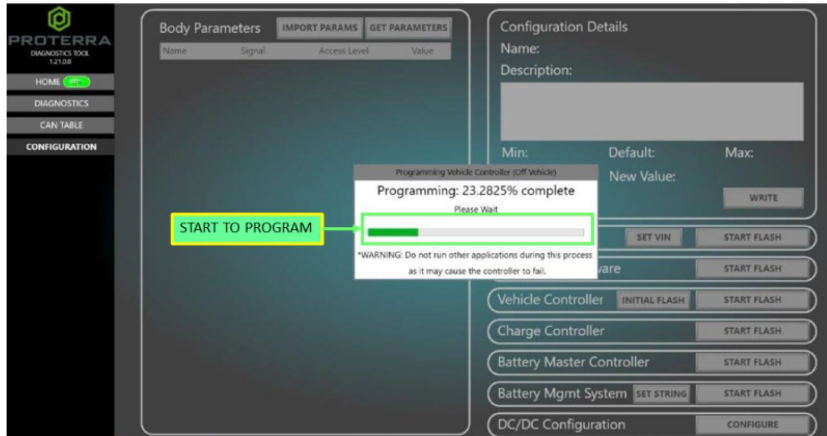
13. The following screen appears. Click on the “Start Flash” button on the screen as shown. If an “Initial Flash” button appears, do not use it. It is only for controllers that have not been previously programmed.



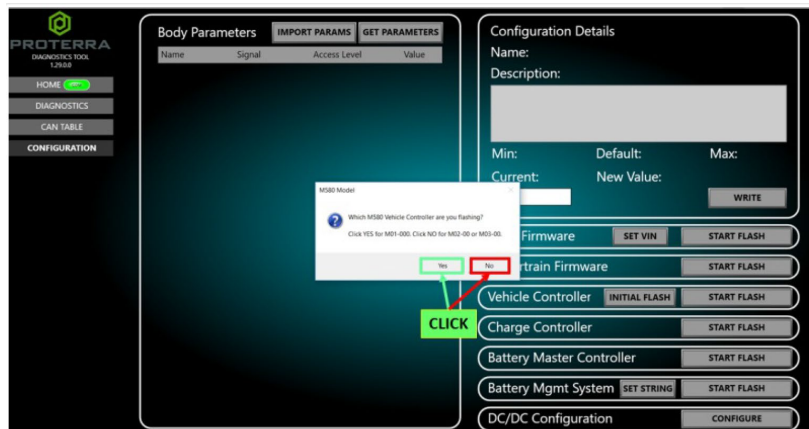
14. The following screen appears. Navigate to the location where the program file was downloaded to the desktop. The name of the file is “SW_VIC_3.8.6”.



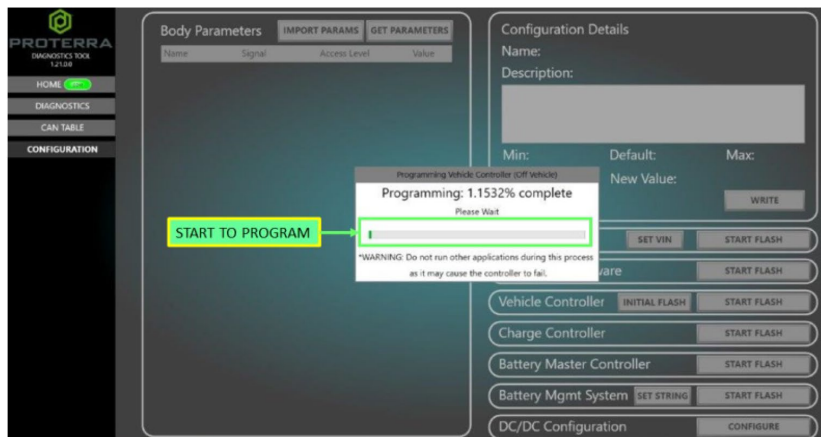
15. Click the “OK” button to start the programming process. The following screen appears.



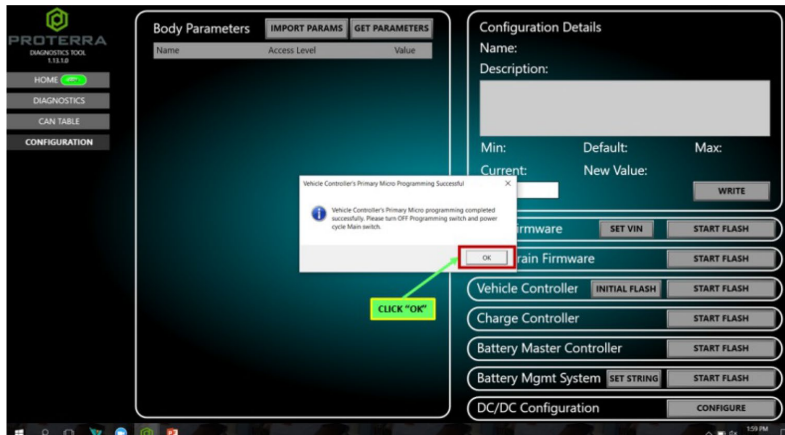
16. When the initial part of the programming is complete, the following screen appears.



17. The following screen appears, wait for the programming process to complete.



18. When the programming process is complete, the following screen appears. Click “OK” to complete the process.



19. Disconnect the Nexiq Tool from the diagnostic port.
20. Turn off the “Hazard” switch in the driver’s workplace.
21. Turn off the “LOTO” Switch at the rear of the bus and turn it back on to reset the controller.
22. Return the bus to service.