

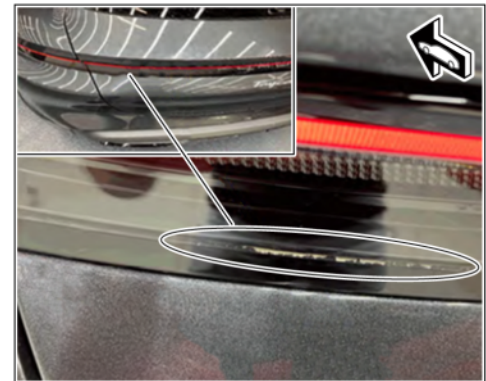
Pollen / Dust Ingress in the Lower Area of the Tail Lights: Reworking the Tail Light (161/24)

Model Line: **Taycan (Y1A / Y1B / Y1C)**

Model Year: **As of 2020**

Concerns: **Tail light**

Cause: **The customer complains about ingress of pollen / dust ⇒ *Pollen / dust ingress tail light* -Circle- in the side tail lights or the rear lid tail light.**



Pollen / dust ingress tail light

Action: If a customer complaint exists, rework the affected tail light.

Two rework **procedures** are available:

- **Cleaning of tail light with manual pressure sprayer (pump spray bottle) and water** ⇒ *Technical Information 'Rework tail light with manual pressure sprayer (pump spray bottle) and water'*
- **Clean tail light using compressed air gun** and commercially available window cleaner ⇒ *Technical Information 'Rework tail light using compressed air gun and commercially available window cleaner'*



Information

This complaint does not involve a defect of the tail light.

Due to the design, the tail lights are not completely sealed, which can lead to ingress of pollen / dust in rare cases.

Replacing the affected tail light will not correct the problem in this complaint and will not provide any remedy.

Required parts if necessary**Information**

The parts specified in the table are only used for vehicles with a fixed rear wing (Silver Edition, M-No. E4E) is required if the rear lid tail light on these vehicle models must be reworked.

Parts Info:	Part No.	Designation – Location of use	Quantity
	99907350902	⇒ Countersunk screw micro-encapsulated black M6 x 12-MK – Rear spoiler (wing) on wing struts	4 pieces
	9J1898195B	⇒ Repair kit adhesive tape cover cap – Rear spoiler cover	1 piece(s)

Required tools

- Tools:
- **P90999 - PIWIS Tester 4**
 - Battery charger with a current rating of **at least 90 A**, e.g., **VAS 5908 - 90 A battery charger**. For further information about the battery chargers to be used, see the corresponding Workshop Manual.
⇒ *Workshop Manual '270689 Charging battery and vehicle electrical system'*
 - Torque wrench, 2-10 Nm (2-8 ftlb), e.g., **V.A.G 1783 - Torque wrench, 2-10 Nm (2-8 ftlb)**
 - Torque wrench, 6-50 Nm (5-37 ftlb), e.g. **V.A.G 1331A - torque spanner, 6-50 Nm (5-37 ftlb)**
 - **VAS 6937 - Adjusting gauge**
 - Commercially available manual pressure sprayer (pump spray bottle) **or** commercially available compressed air gun
 - Commercially available window cleaner

Additional required tool for vehicles with the following equipment: Silver edition (M-No. E4E)

- Hot air gun, e.g., **VAS 1978/14A - hot air gun**

Rework tail light with manual pressure sprayer (pump spray bottle) and water

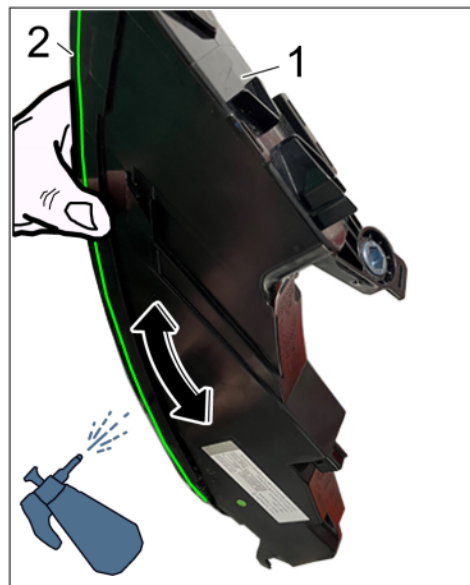
- Work Procedure: 1 Remove affected tail light.
⇒ *Workshop Manual '943119 Remove and install rear light'*
or
⇒ *Workshop Manual '943119 Removing and installing rear lid tail light'*
- 2 Fill manual pressure sprayer with water.



Information

Use clean and low-limescale water to clean.

- 3 Rinse joint ⇒ *Cleaning tail light for manual pressure sprayer -green-* between housing ⇒ *Cleaning tail light for manual pressure sprayer -1-* and light glass ⇒ *Cleaning tail light for manual pressure sprayer -2-* on the underside of the tail light with several targeted sprays from manual pressure sprayer. Perform the process several times in both directions ⇒ *Cleaning tail light for manual pressure sprayer -Arrows-* along the joint, holding the tail light down one side to allow water and impurities to drain.
- 4 Allow tail light to dry before reinstalling, if necessary, additionally blow out the joint using a compressed air gun.
- 5 Install rear light.
⇒ *Workshop Manual '943119 Remove and install rear light'*
or
⇒ *Workshop Manual '943119 Removing and installing rear lid tail light'*

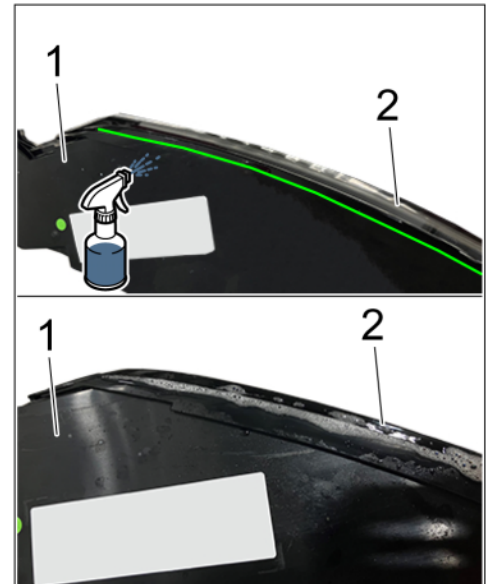


Cleaning tail light for manual pressure sprayer

Rework tail light with compressed air gun and commercially available window cleaner

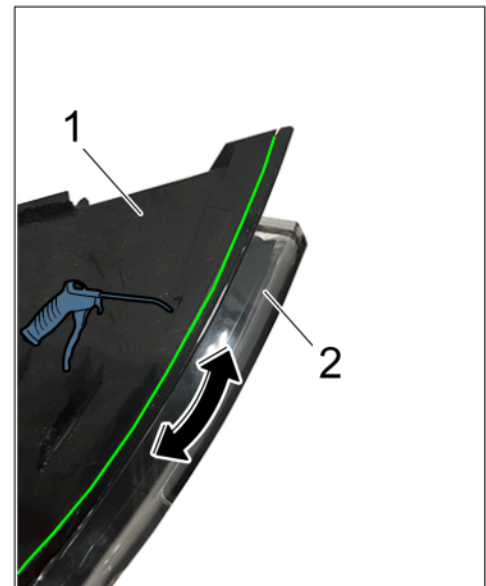
- Work Procedure: 1 Remove affected tail light.
⇒ *Workshop Manual '943119 Remove and install rear light'*
or
⇒ *Workshop Manual '943119 Removing and installing rear lid tail light'*

- 2 Spray window cleaner into the joint ⇒ *Tail light area to be reworked -green-* between the housing ⇒ *Tail light area to be reworked -1-* and light glass ⇒ *Tail light area to be reworked -2-* on the underside of the tail light and distribute evenly by swinging it.
- 3 Allow window cleaner to work **for approx. 60 seconds**.



Tail light area to be reworked

- 4 Blow out the joint ⇒ *Cleaning of the tail light with compressed air gun -green-* between the housing ⇒ *Cleaning of the tail light with compressed air gun -1-* and the light glass ⇒ *Cleaning of the tail light with compressed air gun -2-* on the underside of the tail light using the compressed air gun. Perform the process several times in both directions ⇒ *Cleaning of the tail light with compressed air gun -Arrows-* along the joint, holding the tail light down one side to allow window cleaner and impurities to drain.
- 5 Allow tail light to dry before reinstalling.
- 6 Install rear light.
⇒ *Workshop Manual '943119 Remove and install rear light'*
or
⇒ *Workshop Manual '943119 Removing and installing rear lid tail light'*



Cleaning of the tail light with compressed air gun

Labor position and PCSS encryption



Information

Please note that cleaning work cannot be invoiced via a new car warranty or goodwill.

Labor position:

APOS	Labor operation	I No.
94312991	Clean left tail light	
94312992	Clean right tail light	
94312990	Clean rear lid tail light	
94311901	Removing and installing left tail light	
94311902	Removing and installing right tail light	
94311900	Removing and installing rear lid tail light	

PCSS encryption:

Location (FES5)	94310	Tail light
Damage type (SA4)	3015	dirty

Important Notice: Technical Bulletins issued by Porsche Cars North America, Inc. are intended only for use by professional automotive technicians who have attended Porsche service training courses. They are written to inform those technicians of conditions that may occur on some Porsche vehicles, or to provide information that could assist in the proper servicing of a vehicle. Porsche special tools may be necessary in order to perform certain operations identified in these bulletins. Use of tools and procedures other than those Porsche recommends in these bulletins may be detrimental to the safe operation of your vehicle, and may endanger the people working on it. Properly trained Porsche technicians have the equipment, tools, safety instructions, and know-how to do the job properly and safely. Part numbers listed in these bulletins are for reference only. The work procedures updated electronically in the Porsche PIWIS diagnostic and testing device take precedence and, in the event of a discrepancy, the work procedures in the PIWIS Tester are the ones that must be followed.

© 2024 Porsche Cars North America, Inc.