

Technical product information

Topic	Rear window glass - Water ingress - Left Or right hand side or water ingress from the top of the rear window glass
Market area	Bentley: worldwide (2WBE),China 796 VW Import Comp. Ltd (Vico), Beijing (6796)
Brand	Bentley
Transaction No.	2075642/1
Level	EH
Status	Approval
Release date	

New customer code

Object of complaint	Complaint type	Position
body fixtures and fittings -> glazing, window lifters -> windscreen	leaks -> water ingress	
whole vehicle -> vehicle areas -> window frame -> rear screen frame	noise, vibration -> noise	
body fixtures and fittings -> glazing, window lifters -> rear screen	leaks -> water ingress	

Vehicle data

Continental GT and Flying Spur

Sales types

Type	MY	Brand	Designation	Engine code	Gearbox code	Final drive code
3S3*	2018	E		*	*	*
3S3*	2019	E		*	*	*
3S3*	2020	E		*	*	*
3S3*	2021	E		*	*	*
3S3*	2022	E		*	*	*
3S3*	2023	E		*	*	*
3S3*	2024	E		*	*	*
ZG2*	2020	E		*	*	*
ZG2*	2021	E		*	*	*
ZG2*	2022	E		*	*	*
ZG2*	2023	E		*	*	*
ZG2*	2024	E		*	*	*

Documents

Document name
master.xml

Customer statement / workshop findings

Water ingress into the cabin (Rear window glass)

Hint: For clarity the procedure is the same regardless of vehicle type (Flying Spur or Continental GT) unless otherwise stated

Technical background

Water ingress into the cabin from the locations shown in Figure 1

Rear window glass water ingress (into cabin) - Left hand side

Or

Rear window glass water ingress (into cabin) - Right hand side

NOTICE

In this scenario refer to Section 1



Figure 1

Or

Referring to Figure 2 - Rear screen water ingress (into cabin) from the top of the rear window glass

NOTICE

In this scenario refer to Section 2



Figure 2



Hint: The location of the ingress detailed within this TPI are shown for illustration purposes only

Production change

Not applicable

Measure

Section 1 - Water ingress from the left and / or right hand side

WARNING

The operative **MUST** ensure that all interior trim assemblies are suitably protected. Warranty payments will not be authorised for any claims relating to damaged trim



Hint: In this scenario the sealant can only be applied to the sides and upper part of the rear window glass from the interior side of the vehicle **THIS IS DUE TO THE NARROW GAP BETWEEN THE UPPER EDGE OF THE REAR WINDOW GLASS SEAL AND C-POST BODY PANEL**

DO NOT APPLY SEALANT FROM THE EXTERIOR PLEASE ONLY APPLY SEALANT FROM THE INTERIOR SIDE

- 1) Referring to TPI 2062622/ - identify the location of the water ingress
- 2) Once the location of the ingress has been identified the operative should conduct the following:
 - Mark the point of the ingress using masking tape (Figure 3)



Figure 3

- Take a clear photograph showing the exact location of the ingress
- 3) Raise a technical DISS query
 - Attach all photographs to the DISS query
 - Submit the DISS query then carry out the onward instructions
 - 4) Referring to Rep.Gr 70 - Remove the applicable upper C-post trim
 - 5) Clean the area of the ingress using isopropyl or pre impregnated isopropyl wipe

NOTICE

Ensure all locations are clean and dry before applying sealant

- 6) Referring to Figure 4 - Apply sealant onto a suitable / clean plastic tray



Figure 4

7) Use a narrow spatula to compact the sealant into the cavity between the lower face of the rear window glass and the upper / outer face of the C-post pillar (Figure 5)

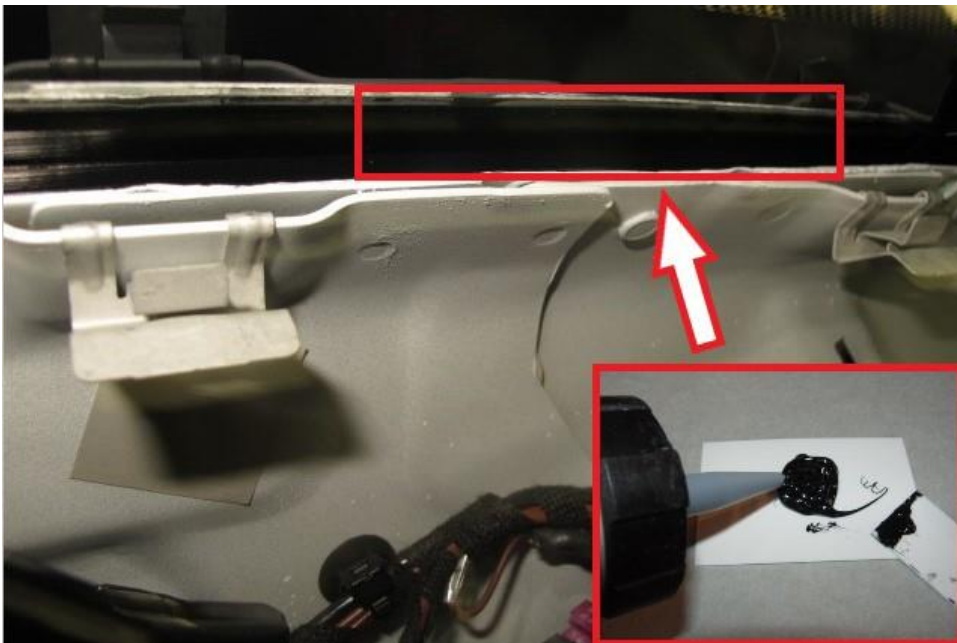


Figure 5

8) Once applied smooth the sealant to ensure a neat finish

- Remove any excess sealant using isopropyl or pre impregnated isopropyl wipes

CAUTION

Before refitting any of the previously removed components the operative must confirm the water ingress has been repaired as follows:

- Allow the sealant to cure (Refer to the sealant manufacturers drying guidelines) prior checking the integrity of the repair
- Repeat the instructions within TPI 2062622/- to confirm the issue is resolved
- Should no ingress be evident after conducting 2062622/- the operative must conduct a second test using a smoke machine or low pressure water hose - **DO NOT USE A JET WASH**
- If the issue is resolved (ingress repaired) refit the previously removed components

However

If the issue is not resolved (ingress still evident) please raise a new technical DISS query or respond via the existing DISS query to request

permission to remove the windscreen, once permission has been granted please continue with the removal of the rear window glass / sealing process



The rear window glass can be reused providing it is removed undamaged

Section 2 - Water ingress from the top of the rear window glass

- 1) Using a suitable smoke machine or low pressure hose - Locate the water ingress
- 2) Once the location of the ingress has been identified the operative should conduct the following:
 - Mark the point of the ingress using masking tape (Figure 6)

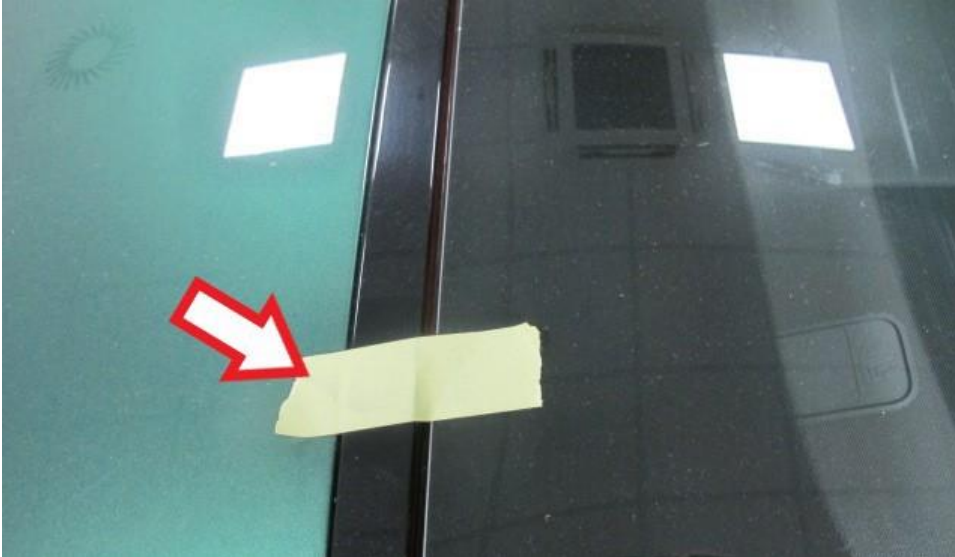


Figure 6

- Once the ingress has been located, take a clear photograph showing the exact location
- 3) Raise a technical DISS query
 - Attach all photographs to the DISS query
 - Submit the DISS query and carry out the onward instructions

WARNING

The operative **MUST** ensure that all interior trim assemblies are suitably protected. Warranty payments will not be authorised for any claims relating to damaged trim



Hint: In this scenario the sealant can only be applied to the sides and upper part of the rear window glass from the interior side of the vehicle THIS IS DUE TO THE NARROW GAP BETWEEN THE UPPER EDGE OF THE REAR WINDOW GLASS SEAL AND C-POSTBODY PANEL . DO NOT APPLY SEALANT FROM THE EXTERIOR PLEASE ONLY APPLY SEALANT FROM THE INTERIOR SIDE



Please note the following depending on vehicle type / ingress location

Continental GT - Remove the headliner - Refer to Rep.Gr 70

Flying Spur - Loosen the headliner DO NOT FULLY REMOVE THE HEADLINER - Refer to Rep.Gr 70

- 4) Referring to Figure 7 - Apply sufficient sealant onto a suitable / clean plastic tray



Figure 7

- Use a narrow spatula to fill / compact the sealant into the cavity from inside the vehicle at the point of the water ingress (see example shown in Figure 8)

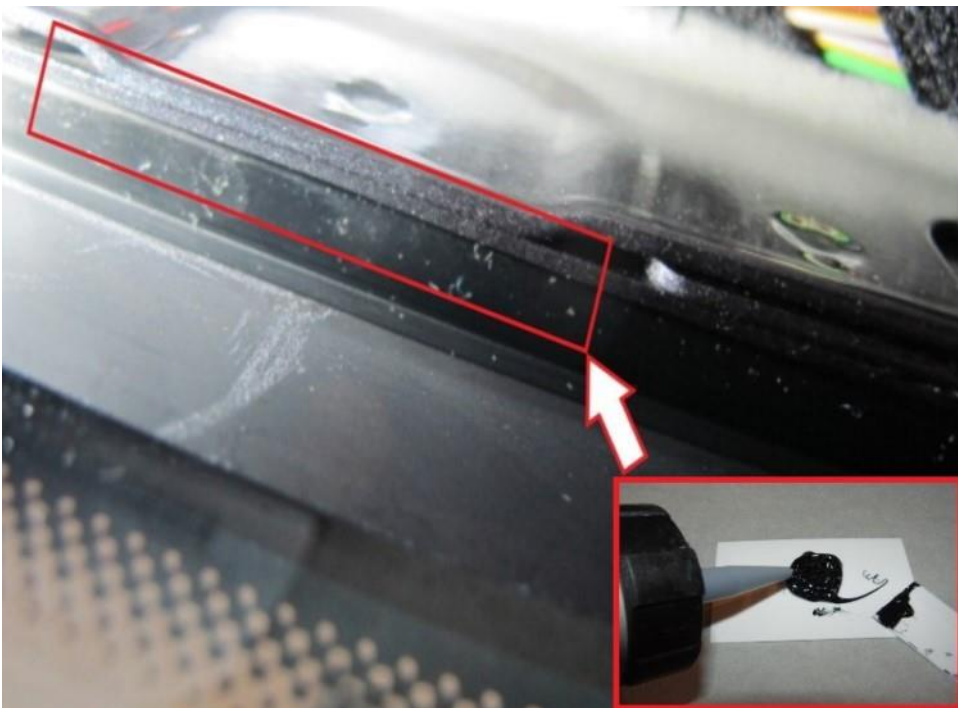


Figure 8

5) Once applied smooth the sealant to ensure a neat finish

- Remove any excess sealant using isopropyl or pre impregnated isopropyl wipe

⚠ CAUTION

Before refitting any of the previously removed components the operative must confirm the water ingress has been repaired as follows:

- Allow the sealant to cure (Refer to the sealant manufacturers drying guidelines) prior checking the integrity of the repair
- Repeat the instructions within TPI 2062622/- to confirm the issue is resolved
- Should no ingress be evident after conducting 2062622/- the operative must conduct a second test using a smoke machine or low pressure water hose - **DO NOT USE A JET WASH**
- If the issue is resolved (ingress repaired) refit the previously removed components

However

If the issue is not resolved (ingress still evident) please raise a new technical DISS query or respond via the existing DISS query to request permission to remove the rear window glass, once permission has been granted please continue with the removal of the rear window glass / sealing process



The rear window glass can be reused providing it is removed undamaged

Warranty accounting instructions

Warranty type	910 or 110
Damage service number	64 10
Damage code	00 50

All models

Sealant application

Labour operation code	64 10 51 50 (Use 99 index until 05/12/24)
Time	20 TU

Water ingress test

Labour operation code	06 89 01 50 (Use 99 index until 05/12/24)
Time	20 TU

Continental GT

Time to remove and refit (x1) C- post trim

Labour operation code	70 68 19 00
Time	10 TU

Time to remove and refit the rear window glass (only if required)

Labour operation code	64 86 19 00
Time	370 TU

Continental GT - Remove and refit headlining (only if required)

Labour operation code	70 84 19 00
Time	140 TU

Flying Spur

Time to remove and refit (x1) C- post trim

Labour operation code	70 68 19 52
Time	40 TU

Time to remove (x1) rear seat (only if required)

Labour operation code	72 48 19 00
Time	30 TU

Time to remove the left and right rear seats (only if required)

Labour operation code	72 48 20 00
Time	60 TU

Roof trim loosen / fasten to gain access to the top of the rear window glass (only if required)

Labour operation code	70 84 09 10
Time	310 TU

Time to remove and refit the rear window glass (only if required)

Labour operation code	64 86 19 00 (Use 99 index until 05/12/24)
Time	420 TU

Parts information

NOTICE

The following must be sourced locally

- Isopropyl cleaner or similar specification
- Mykal wipes or similar specification
- Sika Tack-Drive or Betafil 217 (Figure 16) or similar specification



Figure 16