

**ATTENTION:**

- GENERAL MANAGER
- PARTS MANAGER
- CLAIMS PERSONNEL
- SERVICE MANAGER

IMPORTANT - All Service Personnel Should Read and Initial in the boxes provided, right.


© 2023 Subaru of America, Inc. All rights reserved.



QUALITY DRIVEN® SERVICE

**SERVICE INFORMATION BULLETIN**

**APPLICABILITY:** 2022MY Legacy & Outback  
 2022MY Outback Wilderness  
 2022MY Ascent

**NUMBER:** 16-142-23R

**DATE:** 08/15/23

**REVISED:** 10/29/24

**SUBJECT:** DTC P2715 (Pressure Control Solenoid “D” Stuck On) Diagnosis

**INTRODUCTION:**

This Service Information Bulletin announces the diagnostic procedures to be followed when DTC P2715 (Pressure Control Solenoid “D” Stuck On) is detected by the Transmission Control Module (TCM). In some rare cases DTC P2715 may be inaccurately detected when the Vehicle Dynamics Control (VDC) has detected faults during fail-safe mode. When self-diagnosis is conducted while the lock-up control is restricted during a VDC triggered fail safe mode, the DTC can be inaccurately detected by the TCM. If DTC P2715 is found to be stored in the TCM, follow the diagnostic procedures outlined below.

**SERVICE PROCEDURE:**

**REMINDER:** ALWAYS check other control modules for related DTCs.

**STEP 1:** Using Subaru Select Monitor, perform an all-system DTC check. Confirm DTC P2715 is stored in the TCM.

**STEP 2:** Read the freeze frame data of DTC P2715. Is the “Lock Up Duty Ratio” less than 95.2%?

**NO** – The CVT Pressure Control Solenoid is likely to be the fault source. Confirm the CVT Pressure Control Solenoid status by performing the diagnostic procedures outlined in the applicable Service Manual. Clear the fault memory when repairs are completed.

**YES** – P2715 has been inaccurately detected. Perform the diagnosis and repair for chassis fault codes (C-Type) stored in the VDC control module by performing the diagnostic procedures outlined in the applicable Service Manual. Clear the fault memory when repairs are completed.

**NOTE:** Avoid following the trouble tree diagnosis for code C1431 when diagnosing P2715 misdetection.

**CAUTION: VEHICLE SERVICING PERFORMED BY UNTRAINED PERSONS COULD RESULT IN SERIOUS INJURY TO THOSE PERSONS OR TO OTHERS.**

Subaru Service Bulletins are intended for use by professional technicians ONLY. They are written to inform those technicians of conditions that may occur in some vehicles, or to provide information that could assist in the proper servicing of the vehicle. Properly trained technicians have the equipment, tools, safety instructions, and know-how to do the job correctly and safely. If a condition is described, DO NOT assume that this Service Bulletin applies to your vehicle, or that your vehicle will have that condition.

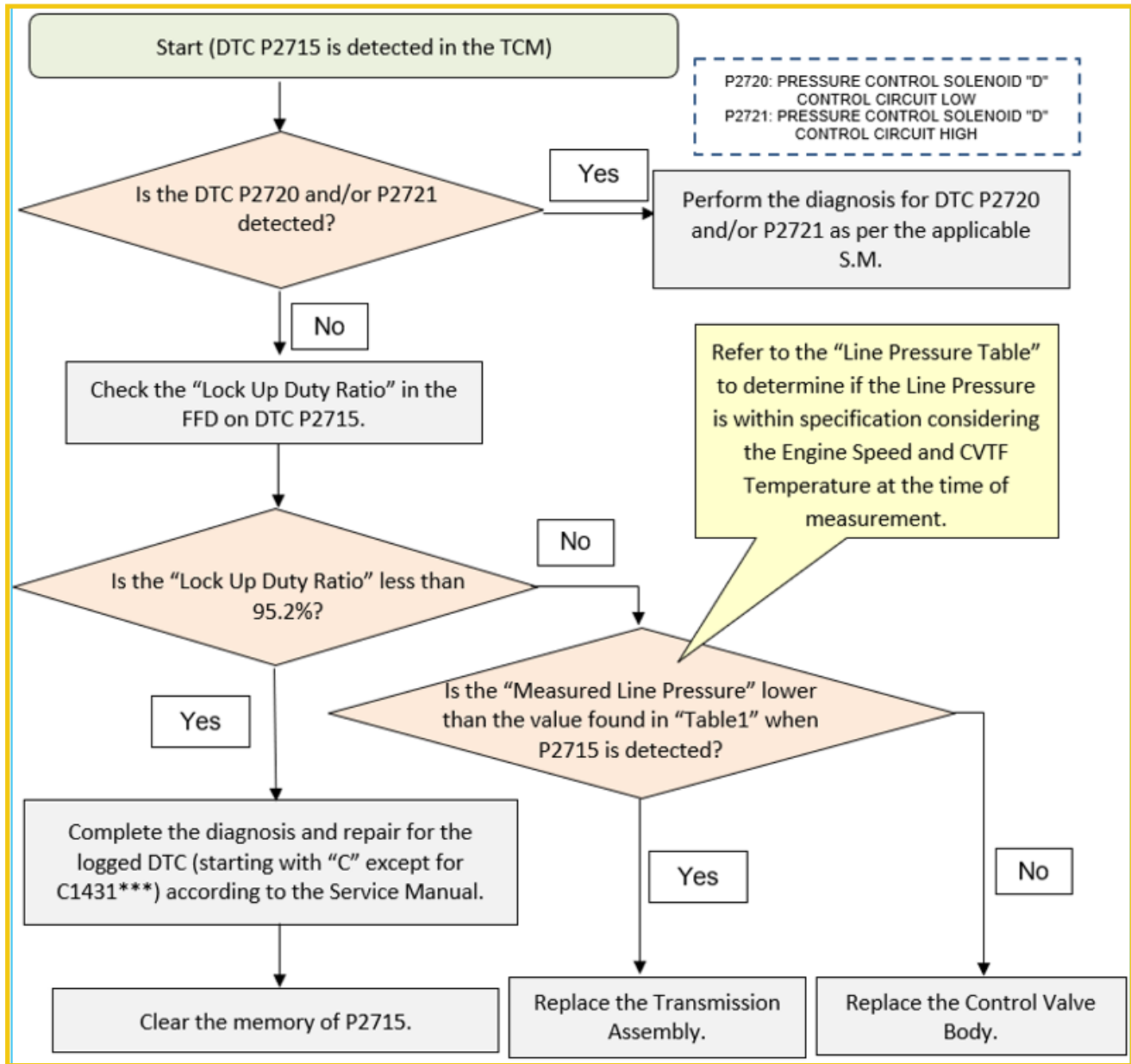
**Subaru of America, Inc. is ISO 14001 Compliant**

ISO 14001 is the international standard for excellence in Environmental Management Systems. Please recycle or dispose of automotive products in a manner that is friendly to our environment and in accordance with all local, state and federal laws and regulations.

*Continued...*

**SERVICE PROCEDURE FLOW CHART:**

**REMINDER:** ALWAYS check other control modules for related DTCs.



**\*\*\* NOTE:** Avoid following the trouble tree diagnosis for code C1431 when diagnosing P2715 misdetection. The trouble tree workflow for C1431 can lead to some automatic transmission testing procedures.

*Continued...*

**LINE PRESSURE TABLE:**

		Engine RPM							
		1000	1025	1050	1075	1100	1125	1150	
<b>Transmission Fluid Temp Celsius</b>	60	3031	3118	3205	3292	3379	3466	3553	<b>kPA</b>
	61	3021	3108	3194	3280	3367	3453	3540	
	62	3011	3097	3183	3269	3354	3440	3526	
	63	3001	3087	3172	3257	3342	3427	3513	
	64	2991	3076	3161	3245	3330	3414	3499	
	65	2981	3065	3150	3234	3318	3402	3486	
	66	2972	3055	3138	3222	3305	3389	3472	
	67	2962	3044	3127	3210	3293	3376	3459	
	68	2952	3034	3116	3198	3281	3363	3445	
	69	2942	3023	3105	3187	3268	3350	3432	
	70	2932	3013	3094	3175	3256	3337	3418	
	71	2922	3002	3083	3163	3244	3324	3405	
	72	2912	2992	3072	3151	3231	3311	3391	
	73	2902	2981	3060	3140	3219	3298	3378	
	74	2892	2971	3049	3128	3207	3286	3364	
	75	2882	2960	3038	3116	3194	3273	3351	
	76	2872	2949	3027	3105	3182	3260	3337	
	77	2862	2939	3016	3093	3170	3247	3324	
78	2852	2928	3005	3081	3158	3234	3310		
79	2842	2918	2994	3069	3145	3221	3297		
80	2832	2907	2982	3058	3133	3208	3283		

		Engine RPM							
		1200	1225	1250	1275	1300	1325	1350	
<b>Transmission Fluid Temp Celsius</b>	60	3727	3814	3901	3988	4075	4162	4249	<b>kPA</b>
	61	3712	3799	3885	3971	4058	4144	4230	
	62	3698	3783	3869	3955	4041	4126	4212	
	63	3683	3768	3853	3939	4024	4109	4194	
	64	3668	3753	3838	3922	4007	4091	4176	
	65	3654	3738	3822	3906	3990	4074	4158	
	66	3639	3722	3806	3889	3973	4056	4140	
	67	3624	3707	3790	3873	3956	4039	4121	
	68	3610	3692	3774	3856	3939	4021	4103	
	69	3595	3677	3758	3840	3922	4003	4085	
	70	3580	3661	3743	3824	3905	3986	4067	
	71	3566	3646	3727	3807	3888	3968	4049	
	72	3551	3631	3711	3791	3871	3951	4031	
	73	3536	3616	3695	3774	3854	3933	4012	
	74	3522	3601	3679	3758	3837	3916	3994	
	75	3507	3585	3663	3742	3820	3898	3976	
	76	3492	3570	3648	3725	3803	3880	3958	
	77	3478	3555	3632	3709	3786	3863	3940	
78	3463	3540	3616	3692	3769	3845	3922		
79	3449	3524	3600	3676	3752	3828	3903		
80	3434	3509	3584	3660	3735	3810	3885		

*Continued...*

		Engine RPM					
		1375	1400	1425	1450	1475	1500
<b>Transmission Fluid Temp Celsius</b>	60	4336	4423	4509	4596	4683	4770
	61	4317	4403	4490	4576	4662	4749
	62	4298	4384	4470	4555	4641	4727
	63	4279	4364	4450	4535	4620	4705
	64	4261	4345	4430	4514	4599	4684
	65	4242	4326	4410	4494	4578	4662
	66	4223	4306	4390	4473	4557	4640
	67	4204	4287	4370	4453	4536	4619
	68	4186	4268	4350	4432	4515	4597
	69	4167	4248	4330	4412	4494	4575
	70	4148	4229	4310	4391	4472	4554
	71	4129	4210	4290	4371	4451	4532
	72	4111	4190	4270	4350	4430	4510
	73	4092	4171	4250	4330	4409	4488
	74	4073	4152	4231	4309	4388	4467
	75	4054	4132	4211	4289	4367	4445
	76	4036	4113	4191	4268	4346	4423
	77	4017	4094	4171	4248	4325	4402
	78	3998	4074	4151	4227	4304	4380
	79	3979	4055	4131	4207	4283	4358
80	3961	4036	4111	4186	4261	4337	

**kPA**

**IMPORTANT REMINDERS:**

- SOA strongly discourages the printing and/or local storage of service information as previously released information and electronic publications may be updated at any time.
- Always check for any open recalls or campaigns anytime a vehicle is in for servicing.
- Always refer to STIS for the latest service information before performing any repairs.