

Subject: AIR TEMPERATURE COMING FROM CENTER VENTILATION GRILLE IS DIFFERENT ON LEFT AND RIGHT	Bulletin No.: 07-005/24
	Last Issued : 10/09/2024

BULLETIN NOTES

APPLICABLE MODEL(S)/VINS

2024 CX-90 with VINS lower than JM3KK*****161691 (produced before March 6, 2024)

2025 CX-70 with VINS lower than JM3KJ*****101621 (produced before March 2, 2024)

DESCRIPTION

Some vehicles may exhibit different air temperature coming from the center ventilation grille on the left and right. This is caused by the mixing control of hot and cold air not being correct. To eliminate this concern, the air control unit has been modified to improve the air mixing control by adjusting the vent door's opening angle.

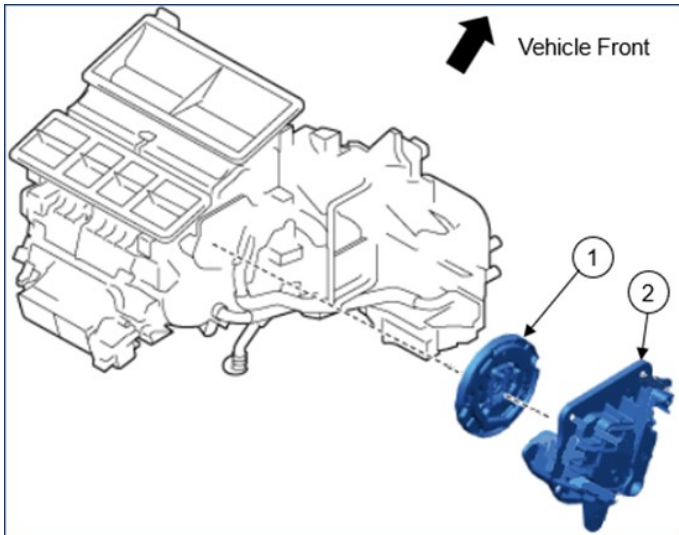
Customers having this concern should have their vehicle repaired using the following repair procedure.

REPAIR PROCEDURE

1. Verify the customer concern.
2. Replace the mode main link with the modified one according to the following procedures.

NOTE: Modified Service Part (Mode Link Set) includes the mode main link and 5 other links. When replacing it, use only the mode main link, and discard the other 5 links.

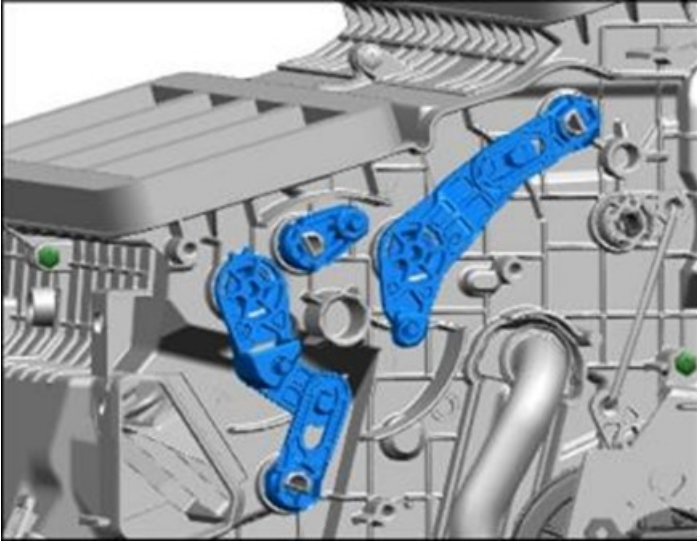
Location of the mode main link



- (1) Mode Main Link
(2) Airflow Mode Actuator Component

CONSUMER NOTICE: The information and instructions in this bulletin are intended for use by skilled technicians. Mazda technicians utilize the proper tools/ equipment and take training to correctly and safely maintain Mazda vehicles. These instructions should not be performed by "do-it-yourselfers." Customers should not assume this bulletin applies to their vehicle or that their vehicle will develop the described concern. To determine if the information applies, customers should contact their nearest authorized Mazda dealership. Mazda North American Operations reserves the right to alter the specifications and contents of this bulletin without obligation or advance notice. All rights reserved. No part of this bulletin may be reproduced in any form or by any means, electronic or mechanical---including photocopying and recording and the use of any kind of information storage and retrieval system ---without permission in writing.

ATTENTION: After removing the main mode link:



- DO NOT remove the 5 links (blue parts in the image) from the vehicle and DO NOT use the new links in the service parts kit.

Repair Procedure - PHEV (PYUL)

1. Replace the mode main link with modified one according to the instructions on MGSS.

- CX-90 (AIRFLOW MODE MAIN LINK REMOVAL/INSTALLATION)
- CX-70 (AIRFLOW MODE MAIN LINK REMOVAL/INSTALLATION)

2. Verify the repair.

CONSUMER NOTICE: The information and instructions in this bulletin are intended for use by skilled technicians. Mazda technicians utilize the proper tools/ equipment and take training to correctly and safely maintain Mazda vehicles. These instructions should not be performed by "do-it-yourselfers." Customers should not assume this bulletin applies to their vehicle or that their vehicle will develop the described concern. To determine if the information applies, customers should contact their nearest authorized Mazda dealership. Mazda North American Operations reserves the right to alter the specifications and contents of this bulletin without obligation or advance notice. All rights reserved. No part of this bulletin may be reproduced in any form or by any means, electronic or mechanical---including photocopying and recording and the use of any kind of information storage and retrieval system ---without permission in writing.

Procedures - MHEV (H3T):

1. Replace the mode main link with modified one according to the instructions below.

a. Remove the cover assembly and disconnect the negative terminal on the 12V lead-acid battery according to the instructions in MGSS.

- CX-90 (AIRFLOW MODE MAIN LINK REMOVAL/INSTALLATION)
- CX-70 (AIRFLOW MODE MAIN LINK REMOVAL/INSTALLATION)

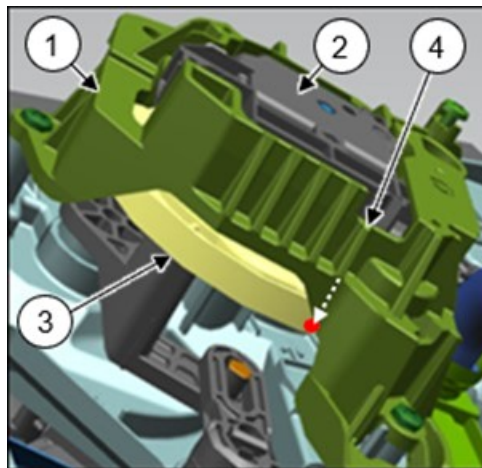
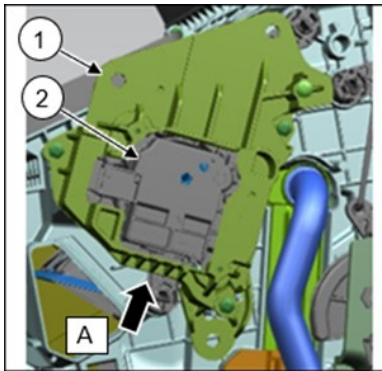
b. Remove the passenger side front scuff plate, passenger side front side trim, glove compartment, passenger side decoration panel, dashboard under cover and passenger side lower panel according to the instructions in MGSS .

- CX-90 (AIRFLOW MODE MAIN LINK REMOVAL/INSTALLATION)
- CX-70 (AIRFLOW MODE MAIN LINK REMOVAL/INSTALLATION)

c. Remove the mode main link according to the following procedure.

1) Visually confirm the location to be marked on the mode main link as shown in the image (red dot).

NOTE: Marking may be difficult because of the parts locations. After removing the mode main link, make a mark. (step c)



View of A

- (1) Airflow mode actuator component
 (2) Actuator
 (3) Mode Main Link

Location of the marking is the intersection of the mode main link and the extension line of the front most rib (4) on the airflow mode actuator component.

2) Remove the airflow mode actuator component according to the " Remove Airflow Mode Main Link" in the following instructions in MGSS.

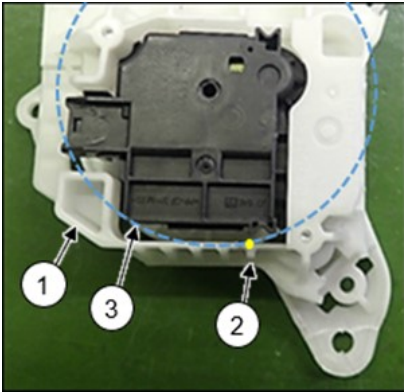
- CX-90 (AIRFLOW MODE MAIN LINK REMOVAL/INSTALLATION)
- CX-70 (AIRFLOW MODE MAIN LINK REMOVAL/INSTALLATION)

NOTE: DO NOT remove the other 5 links and DO NOT use the new links in the service parts kit when installing.

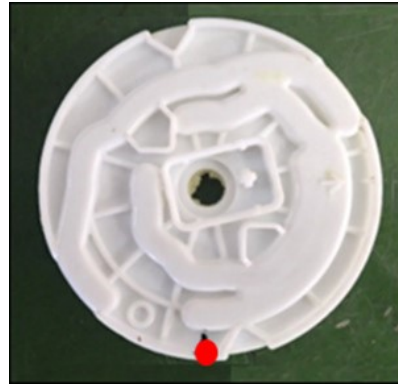
CONSUMER NOTICE: The information and instructions in this bulletin are intended for use by skilled technicians. Mazda technicians utilize the proper tools/ equipment and take training to correctly and safely maintain Mazda vehicles. These instructions should not be performed by "do-it-yourselfers." Customers should not assume this bulletin applies to their vehicle or that their vehicle will develop the described concern. To determine if the information applies, customers should contact their nearest authorized Mazda dealership. Mazda North American Operations reserves the right to alter the specifications and contents of this bulletin without obligation or advance notice. All rights reserved. No part of this bulletin may be reproduced in any form or by any means, electronic or mechanical--including photocopying and recording and the use of any kind of information storage and retrieval system ---without permission in writing.

3). Mark on the mode main link to align the angle.

- If the mode main link and the airflow mode actuator component are removed together, mark on the removed mode main link as shown in the images below.
- If the mode main link remains on the A/C unit, remove the mode main link from the A/C unit and install it to the airflow mode actuator component. Mark on the mode main link as shown in the images below.



- (1) Airflow mode actuator component
 (2) Rib as a reference for marking
 (3) Mode main link



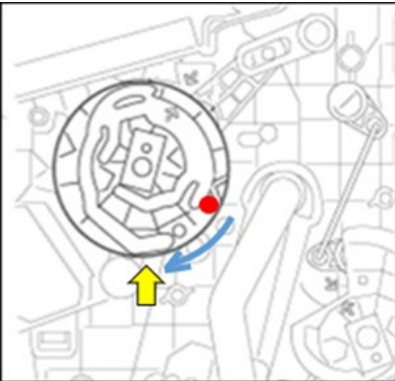
Sample of mode main link after marking

- d. Mark on the new modified mode main link in the same position as the marking on the removed one.
 e. Install the modified main mode link to the A/C unit according to the instructions in MGSS.

- CX-90 (AIRFLOW MODE MAIN LINK REMOVAL/INSTALLATION)
- CX-70 (AIRFLOW MODE MAIN LINK REMOVAL/INSTALLATION)

NOTE: Refer to " Airflow Mode Main Link Installation Note" in MGSS.

- f. Rotate the main mode link by hand and align the marking to the lowest position (yellow arrow).



CONSUMER NOTICE: The information and instructions in this bulletin are intended for use by skilled technicians. Mazda technicians utilize the proper tools/ equipment and take training to correctly and safely maintain Mazda vehicles. These instructions should not be performed by "do-it-yourselfers." Customers should not assume this bulletin applies to their vehicle or that their vehicle will develop the described concern. To determine if the information applies, customers should contact their nearest authorized Mazda dealership. Mazda North American Operations reserves the right to alter the specifications and contents of this bulletin without obligation or advance notice. All rights reserved. No part of this bulletin may be reproduced in any form or by any means, electronic or mechanical--including photocopying and recording and the use of any kind of information storage and retrieval system ---without permission in writing.

g. Install the airflow mode actuator component in the reverse order of the removal according to "Remove Air flow Mode Main Link" in the following instructions in MGSS.

- CX-90 (AIRFLOW MODE MAIN LINK REMOVAL/INSTALLATION)
- CX-70 (AIRFLOW MODE MAIN LINK REMOVAL/INSTALLATION)

h. Install the removed parts in the reverse order of removal.

i. Perform Battery Condition Initial Setting (i-Stop Setting) according to the instructions in MGSS.

- CX-90 (AIRFLOW MODE MAIN LINK REMOVAL/INSTALLATION)
- CX-70 (AIRFLOW MODE MAIN LINK REMOVAL/INSTALLATION)

2. Verify the repair.

PARTS INFORMATION

Parts Number	Description	Qty.	Notes
KR9P-61-A30A	Link, Set, Mode	1	
BCJH-68-162	Clip (R), Trim	1	[R] PHEV only
BCJL-68-162	Clip (L), Trim	1	[R] PHEV only
9YA01-1003A	Bolt	1	[R] PHEV only (Lock bolt)
B455-32-099B	Bolt, Shaft	1	[R] PHEV only (Joint bolt)
9YA02-0682	Bolt	2	[R] PHEV only (Instrument panel bolt)

[R]: Replacement parts

WARRANTY INFORMATION

NOTE:

- This warranty information applies only to verified customer complaints on vehicles eligible for warranty repair.
- This repair will be covered under Mazda's New Vehicle Limited Warranty term.
- Additional diagnostic time cannot be claimed for this repair.

Warranty Type	A
Symptom Code	60
Damage Code	9J
Part Number Main Cause	K616-61-A30A or KR9P-61-A30A
Quantity	1
Operation Number / Labor Hours:	XXWT2DRX / 2.6 Hrs.(PHEV) XXWT2ERX / 0.4 Hrs. (except PHEV)

NOTE: For PHEV model, claim the clips and the bolts as related parts.

CONSUMER NOTICE: The information and instructions in this bulletin are intended for use by skilled technicians. Mazda technicians utilize the proper tools/ equipment and take training to correctly and safely maintain Mazda vehicles. These instructions should not be performed by "do-it-yourselfers." Customers should not assume this bulletin applies to their vehicle or that their vehicle will develop the described concern. To determine if the information applies, customers should contact their nearest authorized Mazda dealership. Mazda North American Operations reserves the right to alter the specifications and contents of this bulletin without obligation or advance notice. All rights reserved. No part of this bulletin may be reproduced in any form or by any means, electronic or mechanical--including photocopying and recording and the use of any kind of information storage and retrieval system ---without permission in writing.