

# Technical product information

<b>Topic</b>	New Flying Spur Hybrid - 12 volt battery draining during the charging of the high voltage battery
<b>Market area</b>	Australia E04 Bentley rest Asia and Australia (6E04),China 723 Volkswagen (Anhui) Automotive CO (6723),China 796 VW Import Comp. Ltd (Vico), Beijing (6796),Germany E02 Bentley rest Europe (6E02),Japan E03 Bentley Japan (6E03),United Arab Emirates E06 Bentley Middle East and Africa (6E06),United Kingdom E01 Bentley UK (6E01),United States E05 Bentley USA and rest America (6E05)
<b>Brand</b>	Bentley
<b>Transaction No.</b>	2068627/6
<b>Level</b>	EH
<b>Status</b>	Approval
<b>Release date</b>	

## New customer code

Object of complaint	Complaint type	Position
electrical power, electric system, data transfer -> power supply	functionality	
electrical power, electric system, data transfer -> battery management -> charging high-voltage battery	functionality -> defective function sequence	

# Vehicle data

## New Flying Spur Hybrid

### Sales types

Type	MY	Brand	Designation	Engine code	Gearbox code	Final drive code
ZG23GB	2022	E		*	*	*
ZG23GB	2023	E		*	*	*
ZG23GB	2024	E		*	*	*
ZG25GB	2023	E		*	*	*
ZG25GB	2024	E		*	*	*

# Documents

Document name
master.xml

-----

## Customer statement / workshop findings

The 12 volt battery is draining during the charging of the high voltage battery

## Technical background

### NOTICE

NOTICE: Before conducting the onward instructions the operative must first check if (SC24/26 Flying Spur Hybrid - Software update for the On Board Charger - 00C6 (TPI 2075313/1) is VIN applicable

In the event that SC24/26 is VIN applicable please conduct to completion

Or

Should SC24/26 not be VIN applicable the operative must conduct the instructions within the Measure section

### [Revision history - TPI 2068627/6](#)

A software update is now available as described within the Measure section of this TPI

The software update prevents the 12 volt battery from discharging

The issue can occur whilst the high voltage system is being charged (for example overnight) in some cases this can discharge the 12 volt battery

Should the 12 volt battery be discharged the vehicle cannot be started

Please conduct the software update only **DO NOT REPLACE ANY PARTS**

## Production change

-

## Measure

### NOTICE

NOTICE: Before conducting the onward instructions the operative must first check if (SC24/26 Flying Spur Hybrid - Software update for the On Board Charger - 00C6 (TPI 2075313/1) is VIN applicable

In the event that SC24/26 is VIN applicable please conduct to completion

Or

Should SC24/26 not be VIN applicable the operative must conduct the onward instructions

### [Software update](#)

- The closed-circuit voltage of the vehicle must be at least 12.5 V during the update. Connect a suitable battery charger to the vehicle. For further information refer to the Repair manual
- During the update switch off all unnecessary consumers (ventilation, seat heater, interior illumination etc) ensure the main light switch is set to 'off' and leave the driver's door open
- Because of the highest transmission stability you **MUST** use the diagnosis interface VAS 6154 (WiFi diagnostic tool) **ONLY** in USB operation or the cable-connected VAS 5055 for the reprogramming (updating) of control units. If these units are not available, the diagnosis interface VAS 5054 (A) can also be used in USB mode
- Do Not under any circumstances use a Bluetooth connection to conduct the reprogramming (updating) of any control units

### WARNING

This vehicle uses a high voltage system and **MUST** only be worked on by suitably qualified personnel

### CAUTION

Please ensure all guidelines within the repair manual are strictly followed before and whilst conducting any work on vehicles with a high voltage system

1) Referring to Figure 1 - Within the Special functions tab - Select SVM - Code Input (Point A)

• Select Perform test (Point B)

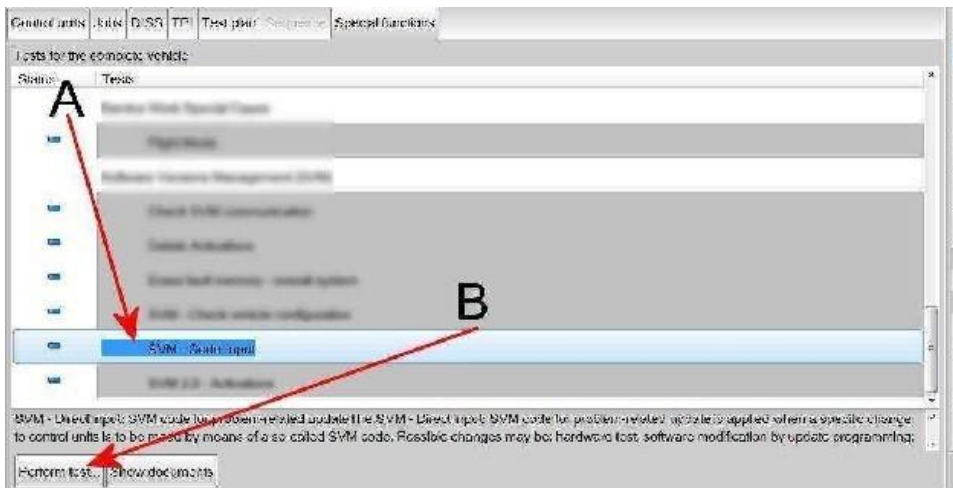


Figure 1

2) Referring to Figure 2 - Enter the SVM code 371C6SW5833

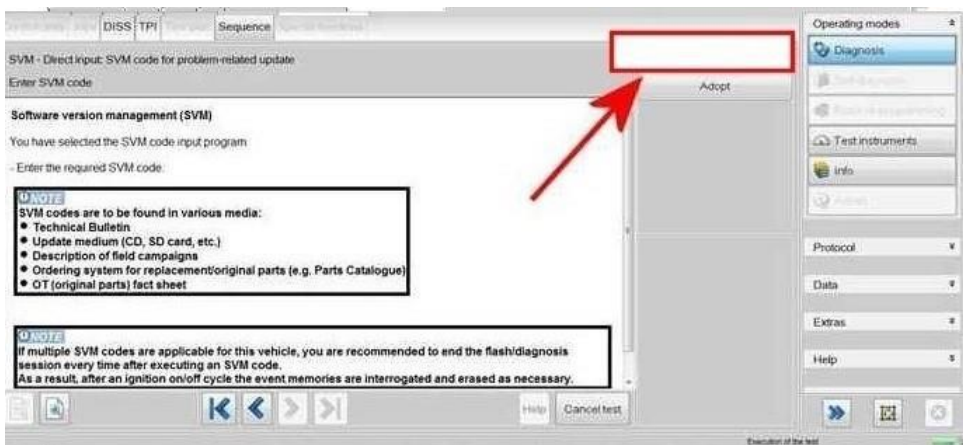


Figure 2

3) Follow all on screen prompts to continue through the procedure, the identification data will be transferred

4) The software update for the On Board Charger - 00C6 will automatically be updated

5) Switch off the ignition

- Remove the diagnostic interface from the OBD port
- Switch off and remove the battery charger from the vehicle
- Close the bonnet, boot and all doors
- Lock the vehicle
- Wait 5 minutes to allow the vehicle to go into bus silence
- When 5 minutes has elapsed, unlock the vehicle and open the driver's door
- Connect ODIS
- Switch on the ignition
- Clear all DTC's
- Once all DTC's are cleared the diagnosis session can be closed
- Remove the diagnostic interface from the OBD port

6) Raise a technical DISS query stating the instructions within TPI 2068627/6 have been conducted

## Warranty accounting instructions

Warranty type 110 or 910

Damage service number 93 52

Damage code 00 40

### Diagnosis time

Labour Operation Code 01 51 00 00

Time As per ODIS log (must not exceed 30 TU)

### NOTICE

Warranty claims for a road test will not be approved

## Parts information

Conduct the software update only **DO NOT REPLACE ANY PARTS**