

Anti-theft alarm system triggers without obvious cause

| | |
|-------------------|--|
| Topic number | LI80.50-P-077350 |
| Version | 2 |
| Function group | 80.50 - Anti-theft alarm system (ATA), Interior motion sensor/Tow sensor |
| Date | 10/28/24 |
| Validity | MODEL 118,177,243,247,167 |
| Reason for change | Remedy change |

Complaint

Customer complains about anti-theft alarm system triggering without obvious cause when the vehicle is parked and/or when entering the vehicle.

All MFA2 and 167 derivatives with code 882 may be affected.

Cause

This is caused by a sporadic loss of communication to the anti-theft alarm system [N26/6]. In many instances there are one or more FCs U110D87, U001988, U016787 stored in the control units anti-theft alarm system [N26/6] and/or signal acquisition and actuation module [N10] / [N10/6]. The alarm system memory may contain several alarm sources.

Remedy

Please process all following points in succession:

1. Check

- Power supply of the overhead control panel [N70]
- Ground points of the overhead control panel [N70]

- Model series 118, 177, 247: W78
- Model series 167: W15/2
- Model series 243: W78/2

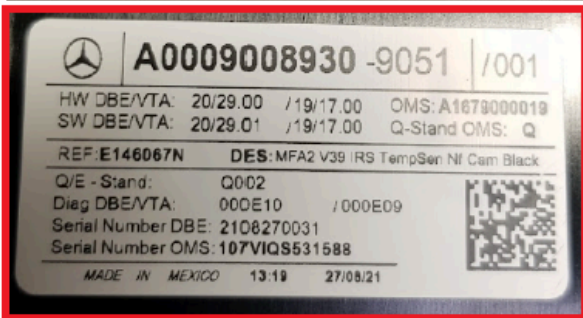
- LIN lines between overhead control panel [N70] and alarm siren [H3/1]
- CAN lines between overhead control panel [N70] and signal acquisition and actuation module [N10] or [N10/6]

2. Open TIPS case for vehicles from production date 6/1/2023

- Attach photo of overhead control panel label (see example images)
- Add control unit log of anti-theft alarm system [N26/6]
- Add alarm history of anti-theft alarm system [N26/6], alarm siren [H3/1] and front signal acquisition and actuation module [N10/6]

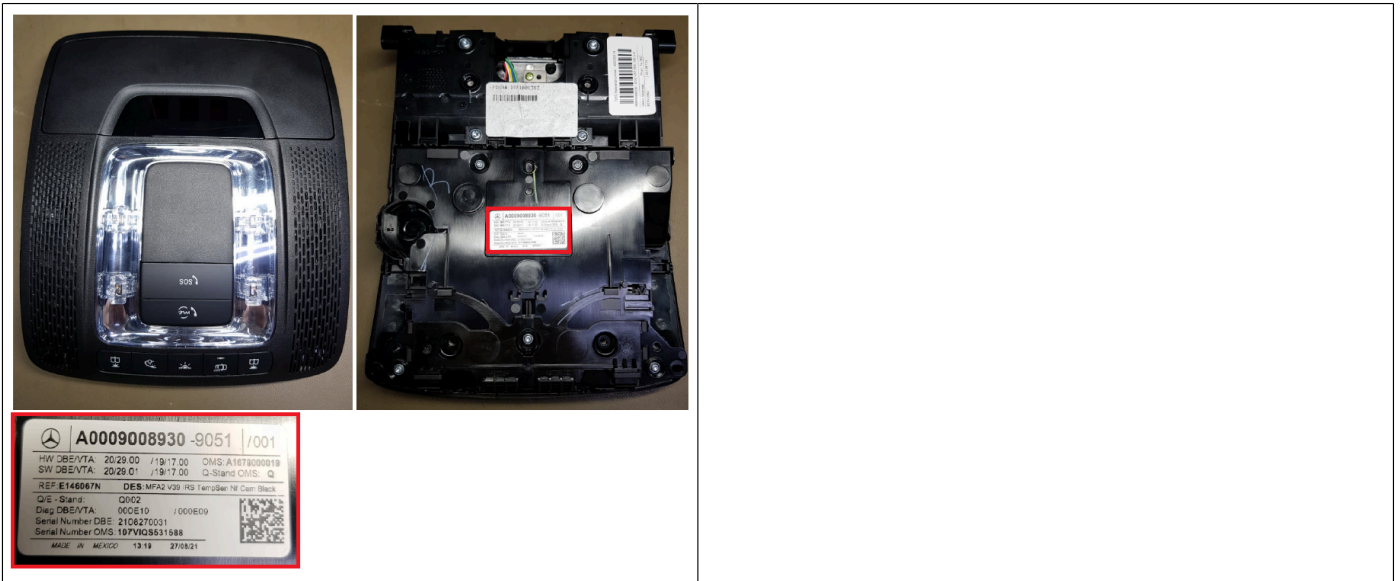
3. Remedy for vehicles prior to production date 6/1/2023

- If the problem cannot be reproduced, the overhead control panel [N70] (anti-theft alarm system [N26/6] is integrated) must be replaced.



Attachments

| File | Description |
|-------------------------------|-------------|
| Pic_1_DBE.png | |



Disclaimer

NOTE: The information contained in this document is intended for use by trained, professional technicians with the knowledge to properly and safely perform diagnosis and repairs on Mercedes-Benz vehicles, using Mercedes-Benz approved tools and equipment. It informs service technicians about conditions that could occur in certain vehicles and provides information that could assist in proper vehicle diagnosis, service, or repair. It does not indicate that a defect is present in any vehicle referenced in this document nor does it imply warranty coverage. DO NOT assume that a symptom or condition, or a described cause of a symptom or condition, affects any particular vehicle or groups of vehicles, or that a described repair applies to any particular vehicle or groups of vehicles. There can be multiple causes resulting in the same or similar symptoms or conditions described in this document, and trained professional service technicians must use their diagnostic skills to make evaluations on a case-by-case basis. The information contained in this document does not guarantee warranty coverage nor does it extend the vehicle's warranty in any way.

Symptoms

Overall vehicle > Safety and locking system > Antitheft alarm system ATA > Function > Inadvertent activation

Overall vehicle > Safety and locking system > Antitheft alarm system ATA > Function > Does not go off

Control unit/fault code

| Control unit | Fault text |
|---|--|
| N10 - Signal acquisition and actuation module (SAM) (BCMFA2) | U016787 - Communication with the anti-theft alarm system has a malfunction. The message is missing. U001988 - Interior CAN communication has a malfunction. Bus OFF |
| N10/6 - Front signal acquisition and actuation module (Driver-side SAM) (BC_F213) | U016787 - Communication with the anti-theft alarm system has a malfunction. The message is missing. U001988 - Interior CAN communication has a malfunction. Bus OFF |
| N26/6 - ATA [EDW]/tow-away protection/interior protection (ATA) (VTA177) | U001988 - Interior CAN communication has a malfunction. Bus OFF U110D87 - Communication with the alarm siren has a malfunction. The message is missing. |

XENTRY Tips

| Operation numbers/damage codes | | | | |
|--------------------------------|----------------|------|-------------|------|
| Op. no. | Operation text | Time | Damage code | Note |
| | | | 82561EC | |