



**SERVICE CAMPAIGN 75-02 ALTERNATOR CABLE ROUTING  
AFFECTED MODELS: 2019 - 2025 TRAVATO**

---

<Date>

«DEALER»  
«ADDRESS»  
«CITY» «STATE» «ZIP»  
«COUNTRY»

**PLEASE FORWARD THIS INFORMATION TO YOUR RV SERVICE MANAGER**

Winnebago Motorhomes is conducting a Field Service Campaign on certain 2019 - 2025 Travato Lithium models to ensure the secondary alternator cable has proper clearance.

**Affected Vehicles and Owner Notification**

Attached to this letter is a list of subject vehicles which were shipped to your dealership. Customers with affected vehicles are being sent a letter notifying them of the service campaign. Customers are directed to contact a Winnebago Motorhome dealer for the service campaign to be performed at no cost to them. A copy of the customer notice is provided for your information.

**Repair Procedure:**

Refer to instruction sheet provided with parts kit or posted on WinPortal.

**Parts Information:**

The part order should be placed as an R: Recall type order. You will need the campaign dealer number and the Winnebago serial number for the affected vehicle to place the order. Multiple serial numbers may be placed on a single order.

**Campaign Dealer Number: 7848**

<u>Quantity</u>	<u>Part Description</u>	<u>Winnebago Industries Part Number</u>
1	Alternator Cable Routing	SC7848-25-702

**Reimbursement**

When the service has been completed, submit a warranty claim using the operation number and TIC code listed below.

<b>DESCRIPTION</b>	<b>OPERATION NUMBER</b>	<b>TIME ALLOWANCE</b>	<b>TIC CODE</b>
Alternator Cable Routing	08750299	1.5	7502SB

If the vehicle is out of warranty, use service authorization 73G7502T when filing your claim.

**FINAL CLAIMS NEED TO BE SUBMITTED BY MAY 1, 2025.**

Perform this procedure on all subject vehicles currently in your inventory. DO NOT DELIVER ANY SUBJECT UNITS TO A CUSTOMER UNTIL THIS CORRECTIVE ACTION HAS BEEN TAKEN.

**If You Need Assistance**

If dealer technical assistance is needed, please contact the Winnebago Motorhome Technical Service Department at (866) 653-4329 from 8:00 a.m. to 4:00 p.m. Central Time or by e-mail at: [techservice@wgo.net](mailto:techservice@wgo.net).

Thank you for your cooperation.

Winnebago Motorhomes



**FOR YOUR INFORMATION  
- COPY OF OWNER NOTICE -**

**RE: BODY SERIAL NUMBER  
CHASSIS SERIAL NUMBER**

Dear Winnebago RV Owner:

When you purchased your new Winnebago RV, you also received our commitment to provide you with a quality product and our dedication to continuing customer satisfaction. In keeping with this commitment, we are notifying you of a service campaign that may affect your Winnebago RV.

Winnebago is conducting a Field Service Campaign on certain 2019 - 2025 Travato Lithium models to ensure the secondary alternator cable has proper clearance.

Our records indicate that you have purchased a vehicle with the serial number which appears above.

**What We Will Do**

Your Winnebago dealer will properly route the secondary alternator cable.

**What You Should Do**

Contact your Winnebago dealer to arrange for a service appointment. Please allow sufficient time for your dealer to process your vehicle on the date of the appointment. The actual repair will take approximately 2 hours however your dealer may require additional time to process your coach.

**Important**

This campaign and offer to provide service is at NO COST TO YOU and is valid until May 1, 2025, at which time the campaign will be closed.

**If You Need Assistance**

If you have questions or need assistance, please contact Winnebago Motorhome Customer Care at (800) 537-1885 Monday through Friday from 8:00 a.m. to 4:00 p.m. Central Time or by email: [customercare@wgo.net](mailto:customercare@wgo.net).

We are sorry to cause you this inconvenience. We have taken this action in the interest of your continued satisfaction with our products. This letter does not constitute an acknowledgement of legal liability.

Thank you for choosing a Winnebago RV.

Winnebago Motorhomes  
Forest City, IA 50436

# Alternator Cable Routing Travato Lithium

## Tools & Supplies required-

1. Screw gun with #2 Philips
2. 8mm, 14mm and 22mm sockets
3. #30 Torx
4. Torque wrench
5. Side cutter

1



2



3



4



5



## Parts required: #SC7848-25-702 Alternator Cable Routing

1. Clamps (4)
2. Wire Ties (12)
3. Screws (4)

**This kit MUST be ordered to perform the campaign.**

1



2



3



**Read the entire instructions carefully before starting the procedure. If you have any questions, please contact the Winnebago Motorhome Technical Service Department by calling 1-866-653-4329 or by email: [techservice@wgo.net](mailto:techservice@wgo.net). This document is confidential and is intended for dealer use only.**

# Step 1 – Remove Right Front Wheel

**NOTICE:** Before beginning, ensure coach is not plugged in and Volta Pack is turned OFF – NO 12v power in coach.

1. Remove right front wheel, 22mm socket.



# Step 2 – Inspect Cable and Shielding

1. Inspect cable and convoluted shielding for any sign of damage. If convoluted shielding is damaged, replace affected area. If there is damage to the cable, contact Winnebago Technical Service at 866-653-4329.



# Step 3 – Remove Fasteners

1. Remove fastener for splash shield under chassis tube (8mm). Will be reinstalled later.
2. Remove fastener from wheel well shroud (8mm). Will be reinstalled later.



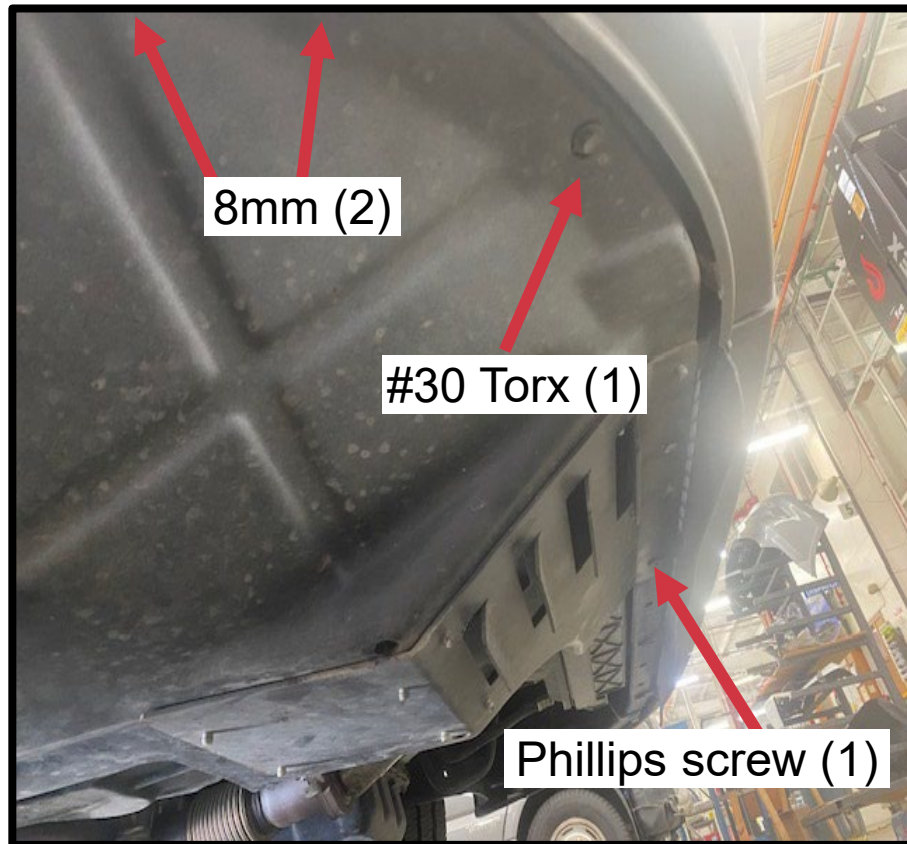
Splash shield fastener  
under wheel well panel



Fastener in wheel well  
shroud

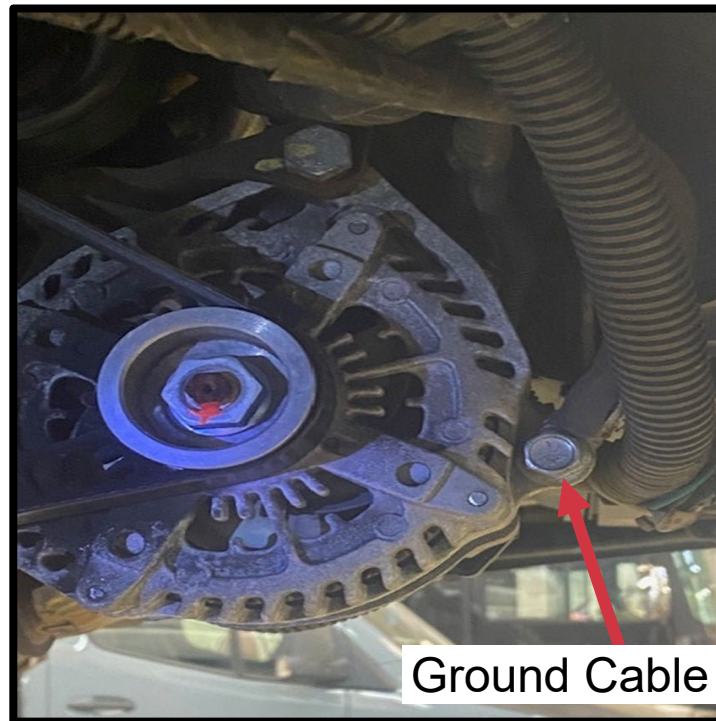
# Step 4 – Remove Fasteners for Splash Guard

1. Remove fasteners for splash guard – will be reinstalled later. Lay guard on floor.



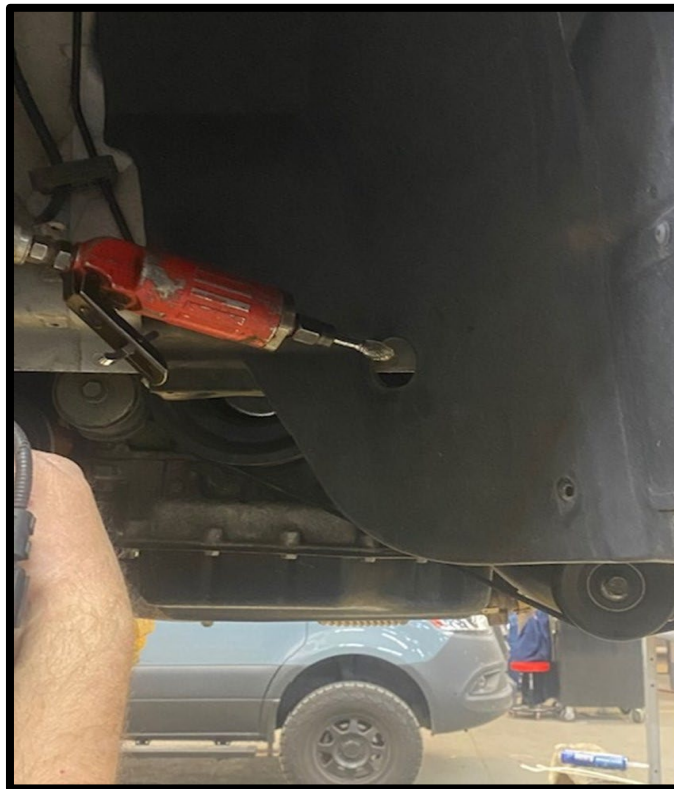
# Step 5 – Remove Ground Cable from Alternator

1. Remove ground cable from alternator (14mm bolt).
2. Feed cable back to right front wheel well area to be routed with positive cable through wheel well shroud. It will be necessary to cut wire ties and remove p-clamps to pull harness through. P-clamps will be reinstalled later.



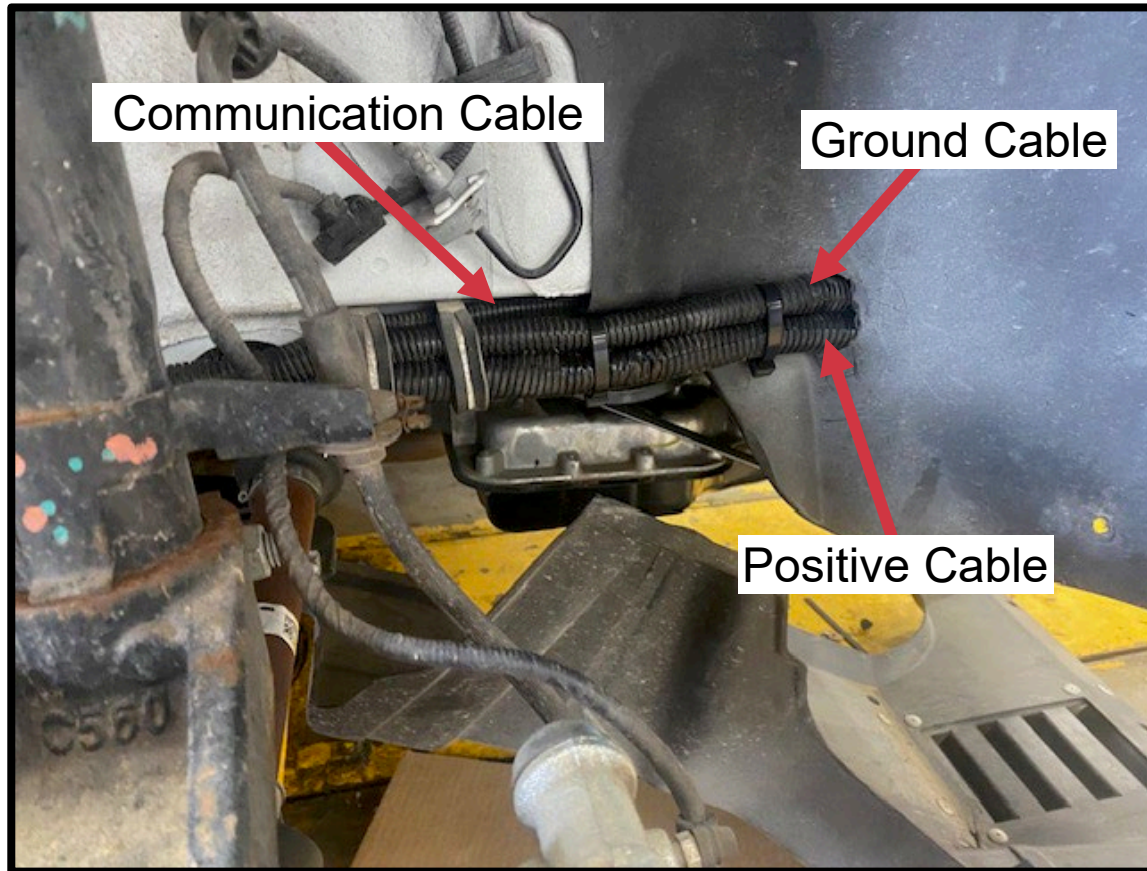
# Step 6 – Enlarge hole if needed

1. If hole through wheel well shroud is not large enough to route both ground and positive cables, make hole slightly larger. Note: smaller communication line will be routed behind the panel and secured with wire ties. Photo shows positive cable not yet installed, use snipping tool to notch hole when cable is present.



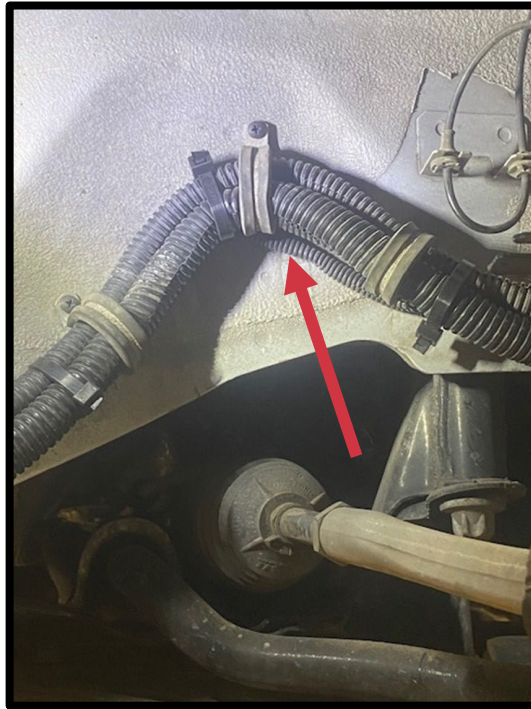
# Step 7 – Route Cables through Wheel Well Panel

1. Route positive and ground cables through wheel well panel, wire tie and clamp as shown. Smaller communication cable will be routed behind the panel, below the chassis rail tube.



# Step 8 – Inspect Routing of Cables

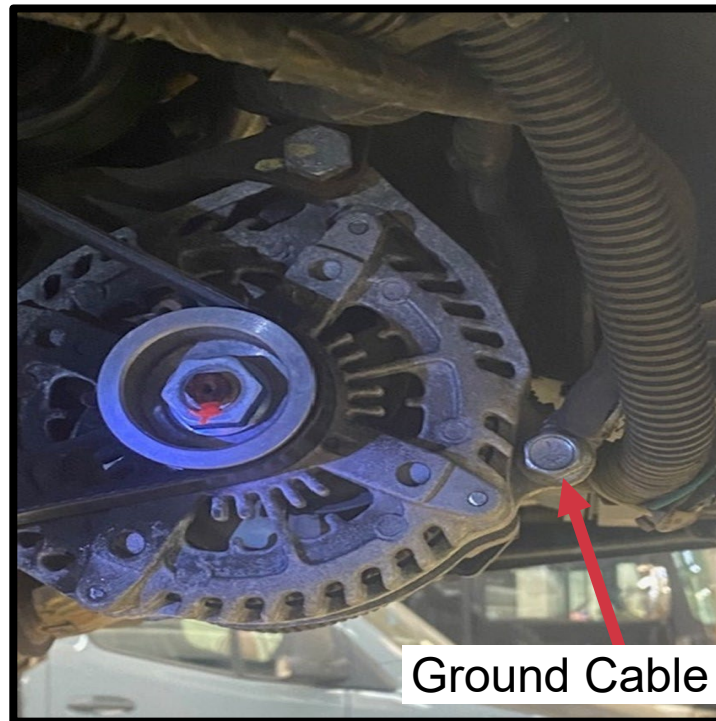
1. Inspect routing of cables in rear of wheel well area and verify they are routed as shown – following contour of the recess.
2. Remove P-clamps and relocate if necessary.
3. Fill any holes left by relocation with a #10 Phillips screws.



Communication cable  
routed and wire tied

# Step 9 – Connect Ground Cable to Alternator

1. Connect ground cable to alternator with original 14mm bolt.
2. Torque to 30 ft lbs.
3. Secure cable with wire ties as needed.



# Step 10 – Reinstall Splash Shield & Panel

1. Reinstall splash shield and wheel well panel using original fasteners from Step 4.



Splash shield



Wheel well panel

# Step 11 – Reinstall Right Front Wheel

1. Reinstall right front wheel, 22mm socket, 140 ft lbs.
2. Turn wheel full travel left and check clearance to wire harness at front of tire, should be over 1”.
3. Turn wheel full travel right and check clearance to wire harness at rear of tire, should be over 1”.

