



PERSONAL SERVICE LAB

MASTERS OF CARE

Rear Exhaust Silencer Anomalies Diagnosis

ATTENTION! This bulletin supersedes both [MAS003867](#) and [MAS004115](#). Please discard/remove all copies of the previous bulletin.

DATE: October 17, 2024

This Diagnostic Sheet serves as a guide and provides additional diagnostic info for possible rear exhaust noise anomalies.

MODELS:

- M157 Ghibli (MY21 and newer).
- M156 QP (MY21 and newer).
- M161 Levante (MY21 and newer).
- M182 Grecale L4 ICE (All MY).

SUBJECT: Noise from Rear Exhaust Silencer

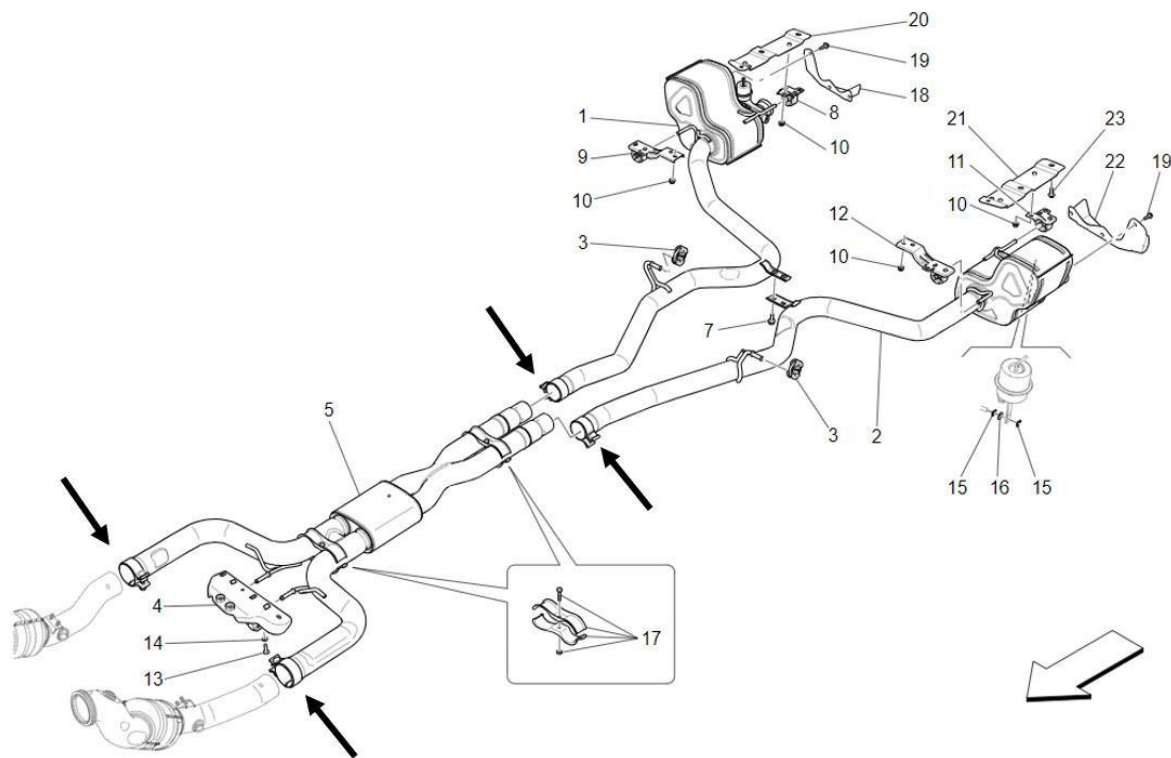
ACTION:

Perform the checklists below depending on the model involved:

- **Checklist A:** M15x-M161 (V6, V8)
- **Checklist B:** M182 (L4)
- **Checklist C:** M182 (L4) Bypass valve blockage and DTC P1217, P2D1100 in the ECM

Checklist A: M15x-M161 (V6, V8)

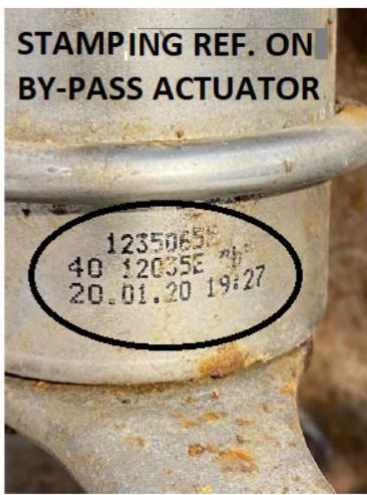
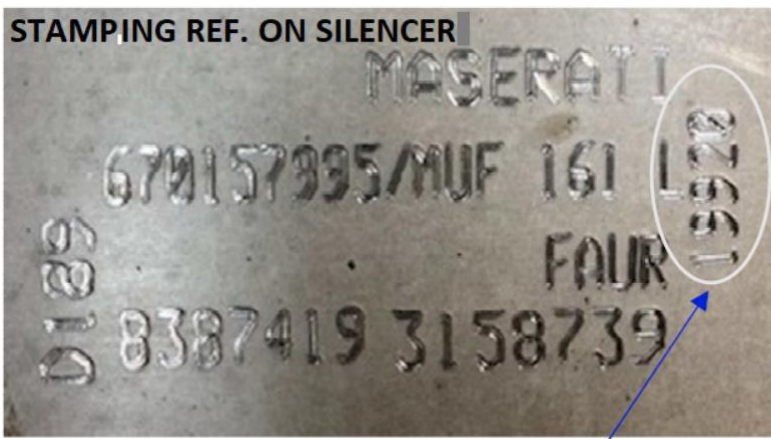
- 1) Describe the customer's concern and the conditions in which it occurs:
 - Is the engine warm or cold?
 - Which driving mode (Sport, Normal, etc.)?
 - At idle or during acceleration?
- 2) Attach a video of the concern to the BOL (to be sent as a "support request") before proceeding with any action.
- 3) Carry out the checks below, referring to the following image:



- 3a) Check the tightness and the conditions of the anti-vibration pads (items n. 8,9,11 and 12).
- 3b) Check the tightness of the collars (pipe clamps) indicated by the arrows, see the above picture.
- 3c) Check the tightness of the nuts of the central silencer support (item n.17).
- 4) Highlight any checks that are NOT OK in BOL (documenting with photos and/or videos) and check whether the problem persists even after correctly torquing. If so, proceed to step 5.
- 5) Remove the silencer and check whether there is incomplete closure of the by-pass valve in "Normal" mode which could cause vibrations/rattling (below, an example photo relating to poor closure of the valve):



- 6) Provide the results of the checks carried out in BOL and attach a photo of the identification references stamped both on the rear silencer, which is suspected to be noisy, and on the relevant bypass valve. Below are some examples.



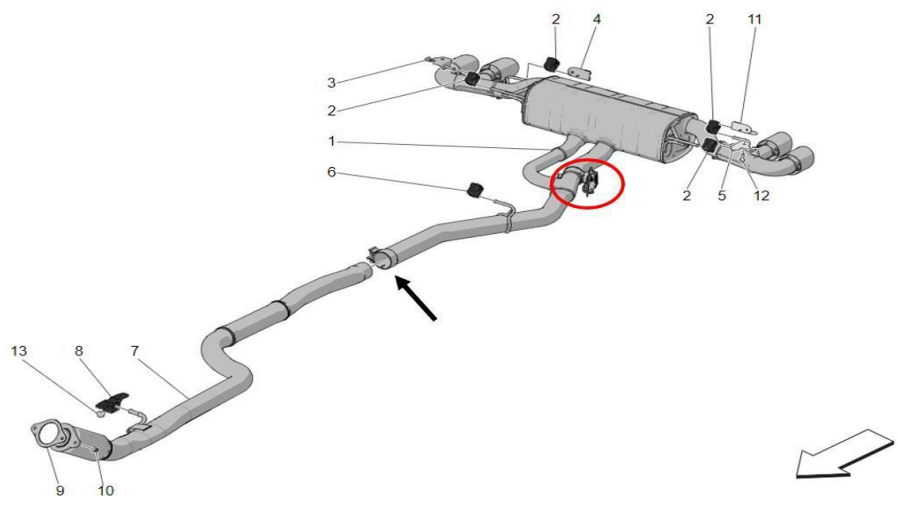
SUPPLIER PROD. DATE ← 17/07/2020

Checklist B: M182 (L4)

- 1) Describe the customer's complaint and the conditions in which it occurs: Engine warm or cold? In which driving mode (Sport, GT, etc.)? At idle or during acceleration?
- 2) Attach a video of the complaint to the BOL (to be sent as a "support request") before proceeding with any action.
- 3) Using the EVO, check the availability of software updates for the engine control module (ECM). If updates are available, perform the update and then verify the vehicle's behavior. If the issue persists, proceed to step 4.

NOTE: Immediately after programming the ECM, check for updates availability for the TCM. If updates are available, proceed with programming the control unit. This operation is necessary, in this case, for the proper matching of ECM and TCM software. Updating the TCM, on MY23 or earlier vehicles, may modify the behavior of the shift paddles, as described in Circular Letter MAS003685.

4) Carry out the checks below, referring to the following image:



- 4a) Check the tightening and the conditions of the rear anti-vibration pads (items n. 2). 4b) Check the tightening of the collar indicated by the arrow, see picture.
- 4c) Check the tightening and the conditions of the central silencer support pad (item n. 8).

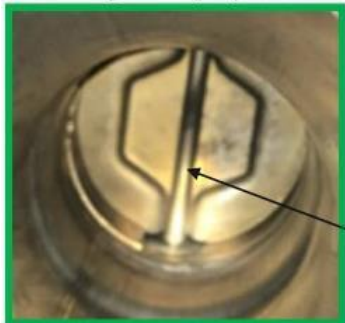
NOTE: do NOT dismantle the bypass valve actuator from its seat. See the red circle in the figure.

5) Select the "GT" driving mode and start the engine at idle. In these conditions, disconnect the bypass valve connector. The valve remains in the closed position.

6) Turn off the engine.

7) Disconnect the rear silencer from the central silencer. With an endoscope, inspect the valve as shown in the images below. Document the condition of the valve with photos.

OK mounting of valve group show this visible shaft:



Shaft

NOK mounting of valve group show this covered shaft:



8) Provide the results of the checks carried out in BOL and attach a photo of the identification references stamped both on the rear silencer, which is suspected to be noisy, and on the relevant bypass valve. Below are some examples.



Checklist C: M182 (L4) Bypass valve blockage and DTC P1217, P2D1100 in the ECM

- 1) Interview the customer by asking the following questions:
- a- Does the customer use gasoline and/or oil additives and if so, what type?

- b- Is refueling done at the same usual service station?

- 2) Disconnect the rear silencer from the center pipe. Using an endoscope, inspect the valve as shown in the images below. Document with photos of the condition of the valve and any possible presence of rust/oxidation on the assembly or bore.

OK mounting of valve group show this visible shaft:



Shaft

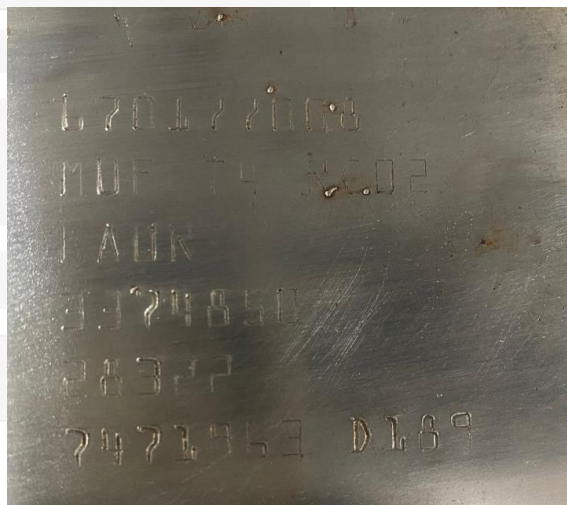
NOK mounting of valve group show this covered shaft:



- 3) Take a sample of oil and petrol following the instructions in MAS000462. The samples taken must be 500 ml.

NOTE: If the required oil and fuel samples are not taken, the replacement of the silencer cannot be authorized by Maserati.

- 4) Attach a photo of the identification references stamped on the rear silencer.



- 5) Attach to the BOL: (which must be sent within the first two years from the warranty start date following the BOL policies) the results of the required checks and confirmation of the execution of the required oil and fuel sampling.