



Service Bulletin


Bulletin No.: 24-NA-191

Date: September, 2024

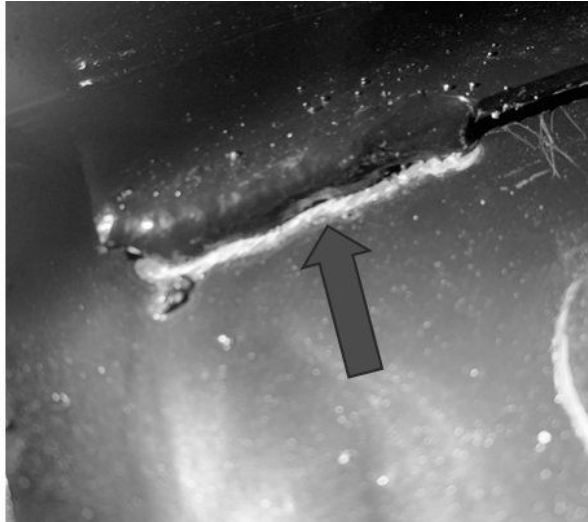
TECHNICAL

Subject: Front End Noise While Driving or Driving Over Irregular Surfaces

Brand:	Model:	Model Year:		VIN:		Engine:	Transmission:
		from	to	from	to		
BrightDrop	Zevo 400	2024	2024	-	-	All	All
	Zevo 600						
Chevrolet	Silverado EV						
GMC	Sierra EV						
	HUMMER EV Pickup						
	HUMMER EV SUV						

Involved Region or Country	North America
Condition	Some customers may comment that there is a front end noise while driving or while driving over irregular surfaces.
Cause	

6731610



6731611

In rare cases, the noise could be caused by an insufficient weld at the front cradle, rearward of the front control arms. This condition could be at either the Left Hand or Right Hand side of the front cradle.

Correction	Technicians are to inspect the front cradle welds for an adequate weld bead. If the weld is not deemed acceptable and contributing to the noise, technicians are to replace the front cradle assembly by referencing the procedure below.
-------------------	---

Important: Service agents must comply with all International, Federal, State, Provincial, and/or Local laws applicable to the activities it performs under this bulletin, including but not limited to handling, deploying, preparing, classifying, packaging, marking, labeling, and shipping dangerous goods. In the event of a conflict between the procedures set forth in this bulletin and the laws that apply to your dealership, you must follow those applicable laws.

Important: This technical service bulletin (TSB) can only be completed by certified repair facilities who have met all specific training, tool and equipment requirements pertaining to the vehicle Brand and Model serviced. Repairs must be performed by a technician who has successfully completed the required training.

Service Procedure

Parts Information

Causal Part	Description	Part Number	Qty
X	Cradle	85026265	1

Warranty Information

For vehicles repaired under the Bumper-to-Bumper coverage (Canada Base Warranty coverage), use the following labor operation. Reference the Applicable Warranties section of Investigate Vehicle History (IVH) for coverage information.

Labor Operation	Description	Labor Time
1431690	Front Cradle Replacement	Use Published Labor Operation Time

Version	1
Modified	Released September 16, 2024

