

Windshield Washer Fluid System Leaks - General Diagnosis

Topic number	LI82.35-P-078467
Version	1
Function group	82.35 - Windshield washing system
Date	10/22/24
Validity	All passenger car model series
Reason for change	

Complaint

Washer fluid system leaks.


Attachments	
File	Description
Bild1.1.jpg	Leakage on sensor
	
Bild1.2.jpg	Leakage on seam



Bild1.3.jpg

Leakage on cap



Bild1.4.jpg

Leakage on lower container

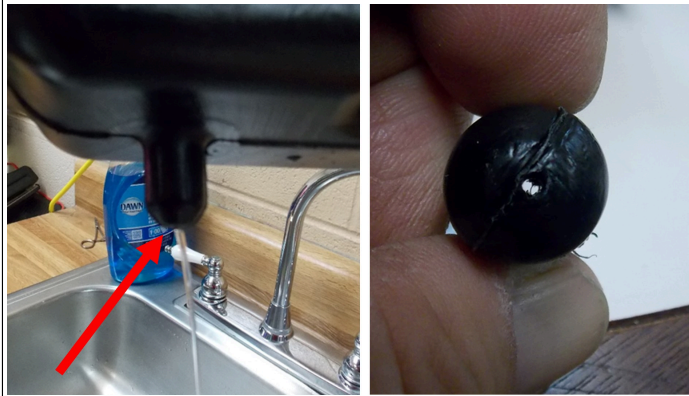


Bild3.1.1.jpg

Leakage on washer fluid pump housing

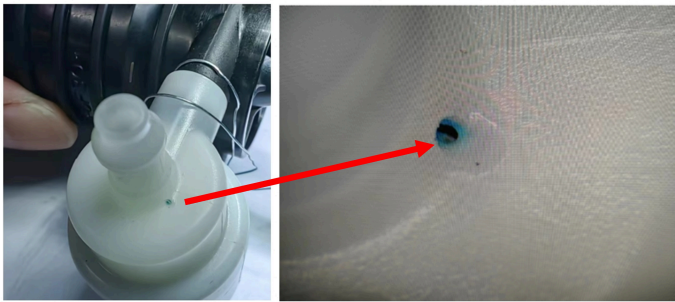


Bild3.1.2.jpg

Leakage caused by cracked washer fluid pump distributor housing

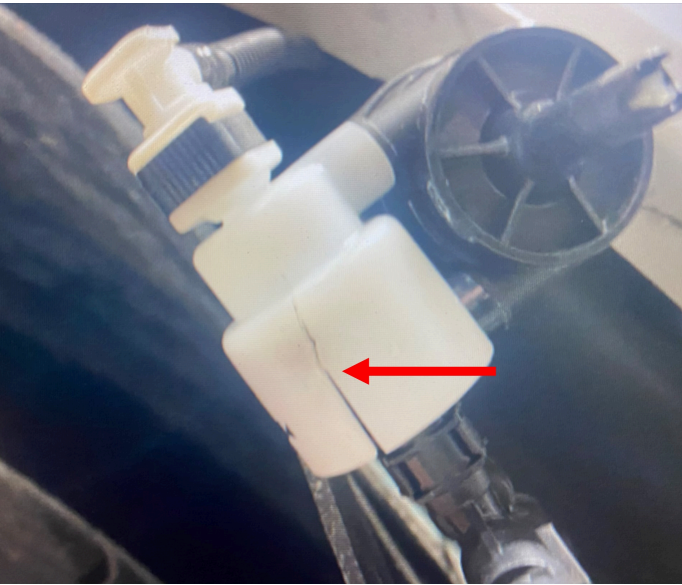


Bild3.1.3.jpg

Leakage caused by cracked washer fluid pump fitting



Bild4.1.jpg

Broken washer fluid pump fitting



Bild4.2.jpg

O-ring for washer fluid line missing

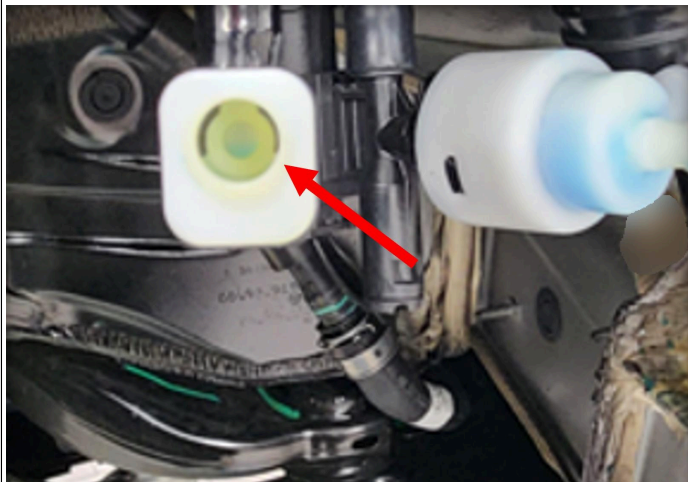


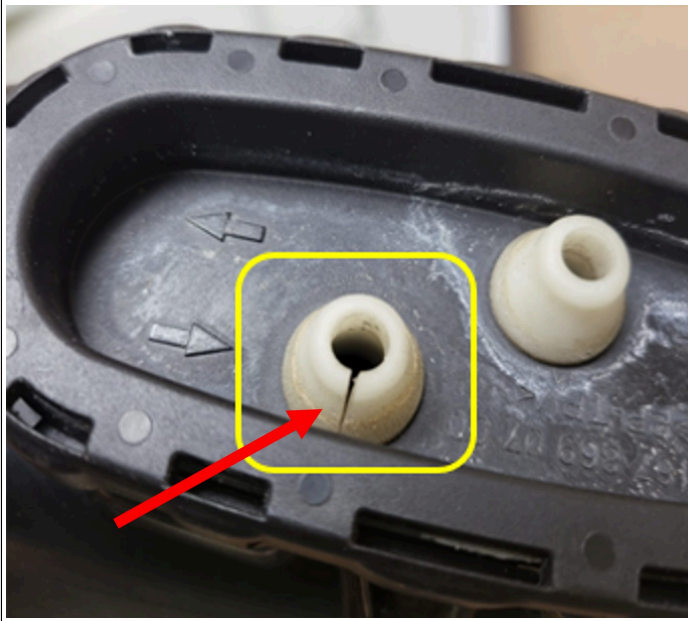
Bild4.3.jpg

O-ring for washer fluid line deformed



Bild5.jpg

Seal for washer fluid heater lines cracked



Cause

Various possible causes:

1. Washer fluid reservoir itself.
2. Seal on washer fluid pump/washer fluid reservoir.
3. Washer fluid pump.
 - 3.1. Distributor housing leaks.

XENTRY Tips

- 3.2. Pump fitting leaks.
- 3.3. Washer fluid hose cannot be snapped into place on pump fitting.
- 3.4. Washer fluid hose will not stay on pump fitting, although connector OK.

- 4. Washer fluid line.
 - 4.1 Connector will not stay on pump fitting because it is broken.
 - 4.2 Sealing ring in connector missing.
 - 4.3 Sealing ring in connector fitted, but deformed and therefore leaks.
 - 4.4 Damage to washer line by animal.

- 5. Seal on heating washer fluid reservoir/washer fluid reservoir.

Remedy

Replace defective component parts only. Do not replace any adjacent component parts that are intact.

Note: Repair kits for washer line hoses do exist to allow patches for line damage.

Disclaimer

NOTE: The information contained in this document is intended for use by trained, professional technicians with the knowledge to properly and safely perform diagnosis and repairs on Mercedes-Benz vehicles, using Mercedes-Benz approved tools and equipment. It informs service technicians about conditions that could occur in certain vehicles and provides information that could assist in proper vehicle diagnosis, service, or repair. It does not indicate that a defect is present in any vehicle referenced in this document nor does it imply warranty coverage. DO NOT assume that a symptom or condition, or a described cause of a symptom or condition, affects any particular vehicle or groups of vehicles, or that a described repair applies to any particular vehicle or groups of vehicles. There can be multiple causes resulting in the same or similar symptoms or conditions described in this document, and trained professional service technicians must use their diagnostic skills to make evaluations on a case-by-case basis. The information contained in this document does not guarantee warranty coverage nor does it extend the vehicle's warranty in any way.

Symptoms
Body > Body/Cab > Body sealing > Water entry
Overall vehicle > Cleaning system > Windshield washer system > Malfunction
Body > Interior equipment > Interior trim > Stained/dirty
Overall vehicle > Cleaning system > Cleaning system indicator lamp > Washer fluid level > lit
Body > Roof system > Tilting/sliding sunroof system > Leaks
Overall vehicle > Cleaning system > Windshield washer system > Windshield washer nozzle does not spray
Body > Air conditioning > Air conditioning > Windows fogged

Operation numbers/damage codes

XENTRY Tips

Op. no.	Operation text	Time	Damage code	Note
---------	----------------	------	-------------	------