



PROTERRA



TECHNICAL SERVICE BULLETIN

ISSUE DATE:	2/6/2023
SERVICE BULLETIN SUBJECT:	ZX5A01 Charge Port B Software Update
VINs or MODELS AFFECTED:	Service Specified Buses
COMPLETE BY:	Next Service Opportunity
SERVICE BULLETIN #:	SC-23-19
LABOR OPERATION CODE:	LM42Z

NOTICE! It is expected that this process may require up to one hour per bus. Please schedule appropriately to minimize vehicle downtime.

ZX5A01 PORT B SOFTWARE UPDATE

Description:

The procedure describes the process of updating the vehicle controller to the latest version for Charge Port B.

Tools/Parts Required:

Tools and Supplies Required:

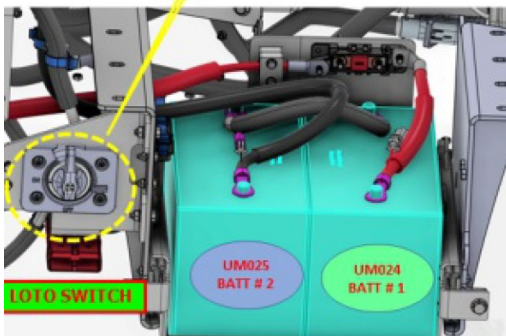
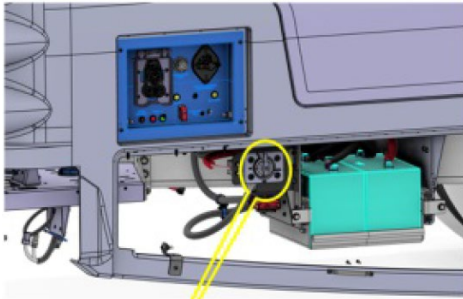
- Service Laptop with Proterra Diagnostic Tool
- Nexiq Tool

Software Required:

- 063041 SOFTWARE, M580 VIC, REMINGTON PORT B CC, 10/05/2022, Base 1.0.5

Procedure:

1. Navigate to the following location on the Service Laptop.
<\\bus.local\files\Engineering\Service Bulletins\Service Bulletin Files for SC-23-19>
2. Copy the file in that location to a secure place on the desktop of the Service Laptop.
3. Ensure that the bus is powered on at the curbside rear of the bus. This includes the LOTO Switch shown and the Master Disconnect Switch.



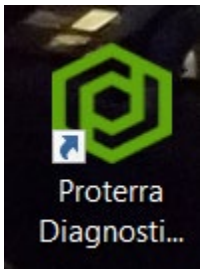
4. Connect the Nexiq Tool to the green diagnostic port on the rear deck shown in the following photographs. The port on the charge plate can be used as well.



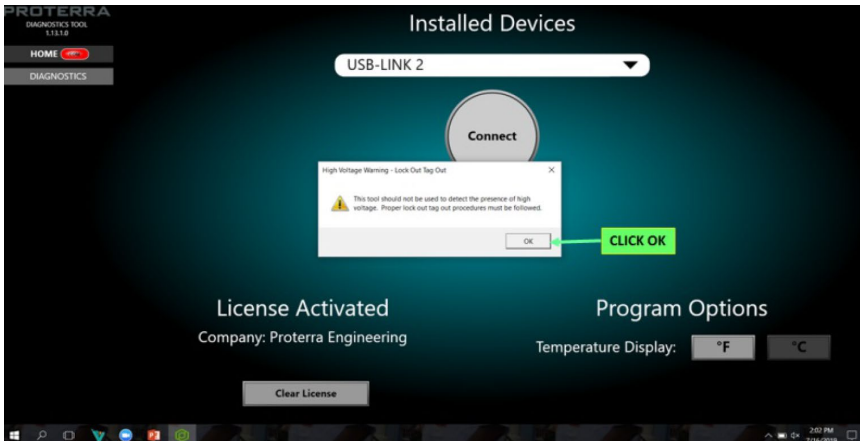
5. Set the master Switch to “Day Run” mode.
6. Turn on the hazard switch in the Driver’s workplace.



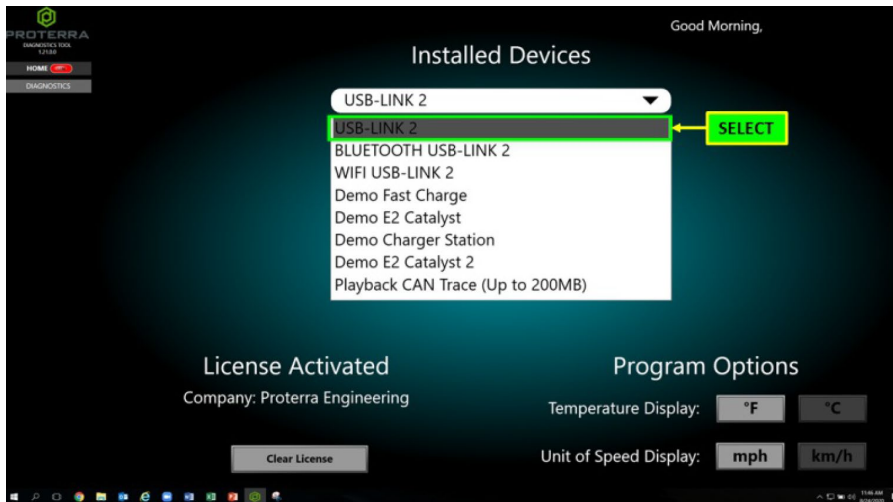
7. Connect the Nexiq Tool to the programming laptop.
8. Start the Proterra Diagnostic Tool by double clicking the icon on the desktop.



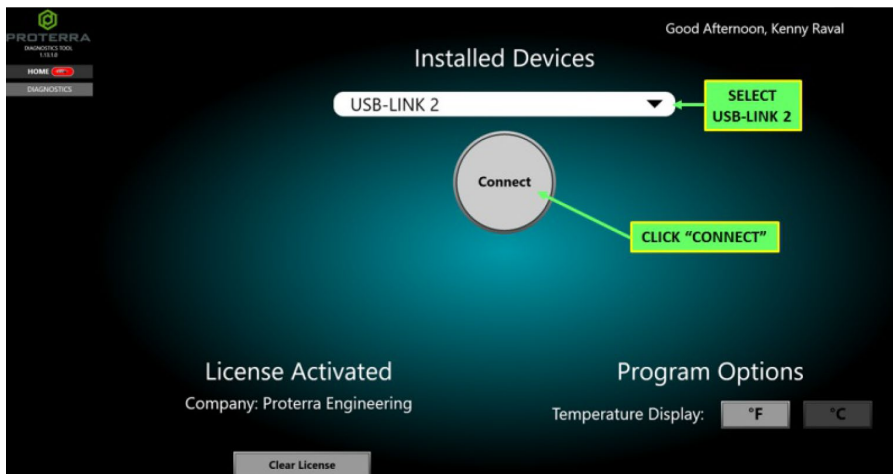
9. The following screen appears. Click “OK” to dismiss the pop-up warning after reading it.



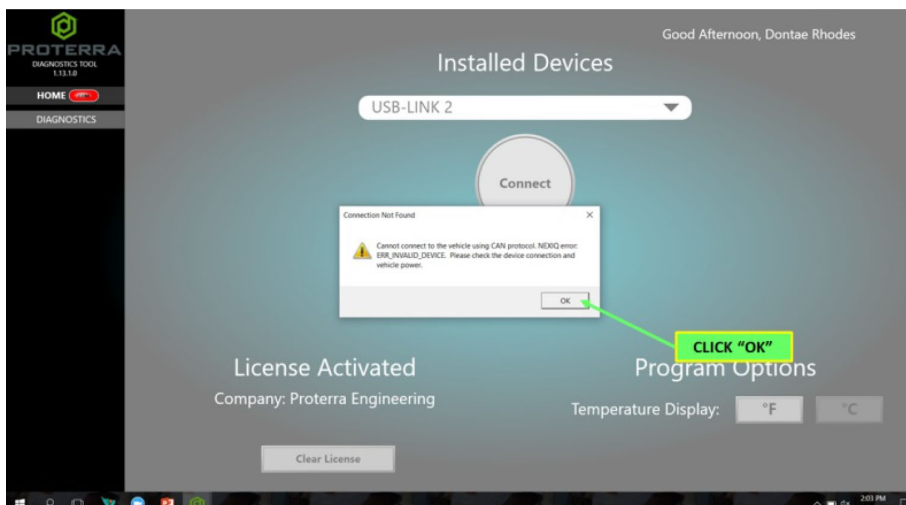
10. Select the “USB-Link 2” option in the drop down.



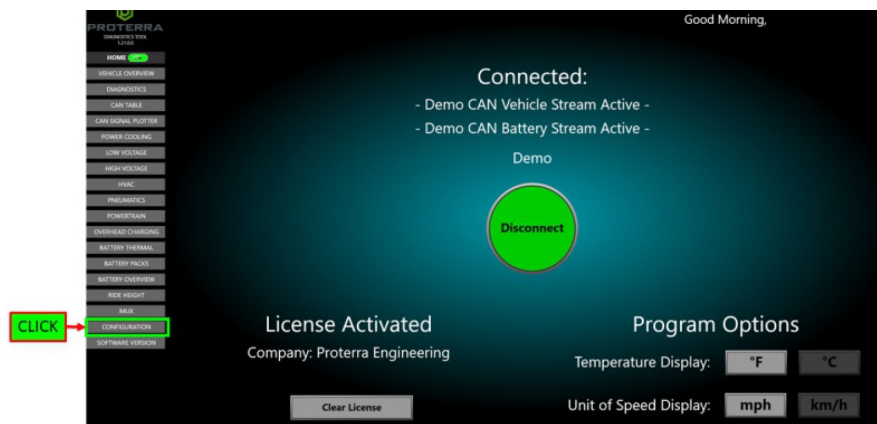
11. Click the “Connect” button that appears.



12. If the following screen appears, click the “OK” button to dismiss the pop-up window.



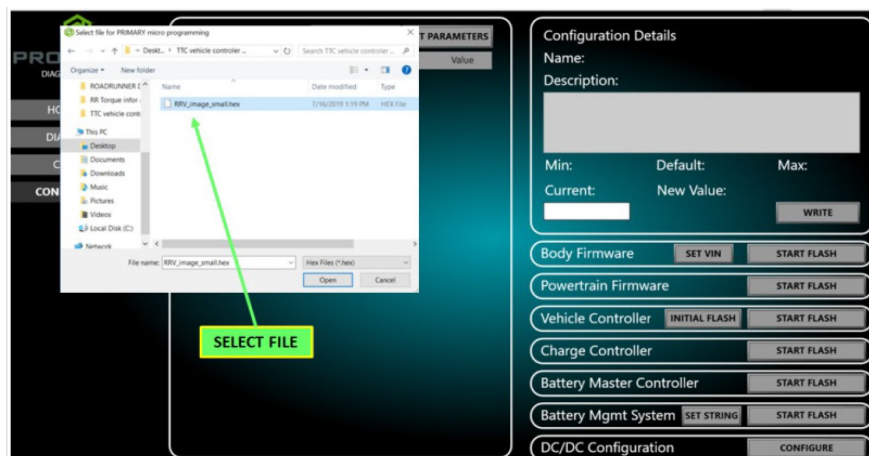
13. The following screen appears. Click the “Configuration” button as shown.



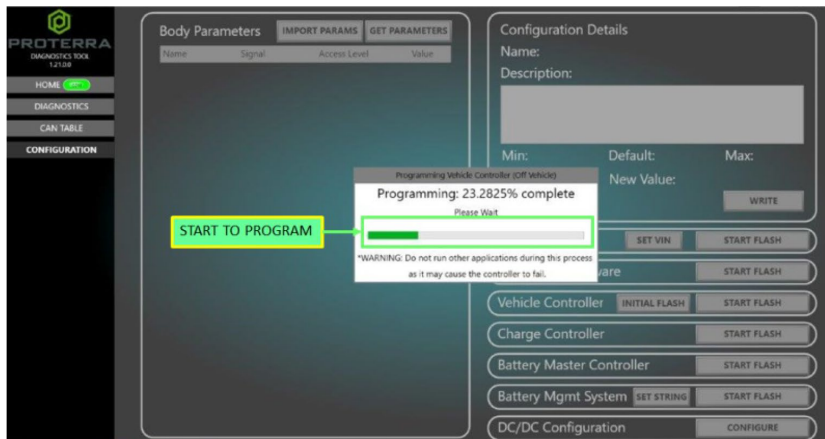
14. The following screen appears. Click on the “Start Flash” button on the screen as shown.



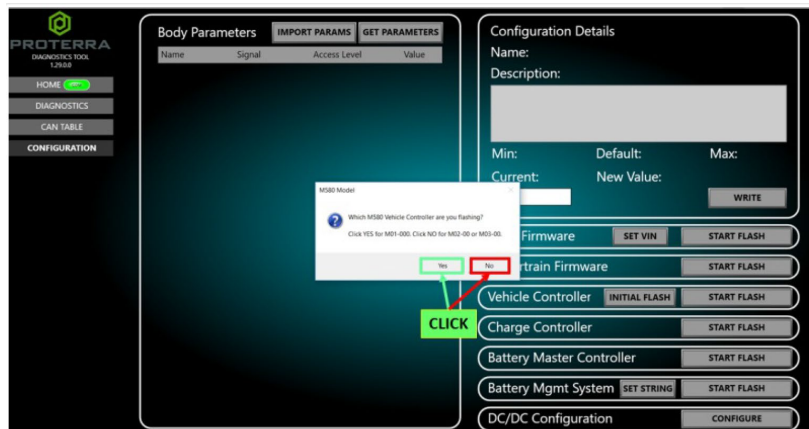
15. The following screen appears. Navigate to the location where the program file was downloaded to the desktop. The name of the file is “REMINGTON_PORTBCC_10_05_2022_063041”.



16. Click the “OK” button to start the programming process. The following screen appears.

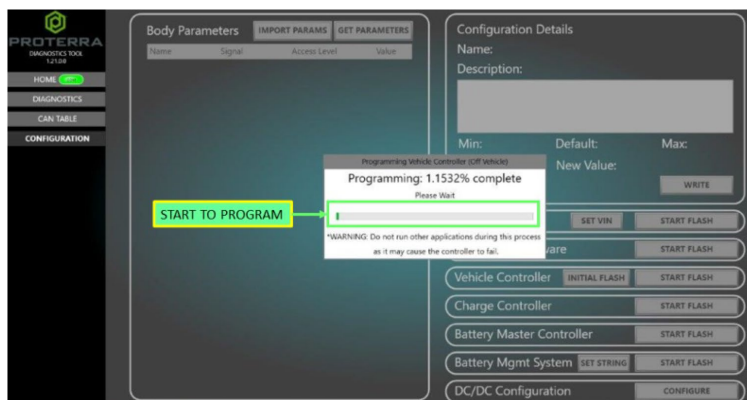


17. When the initial part of the programming is complete, the following screen appears.

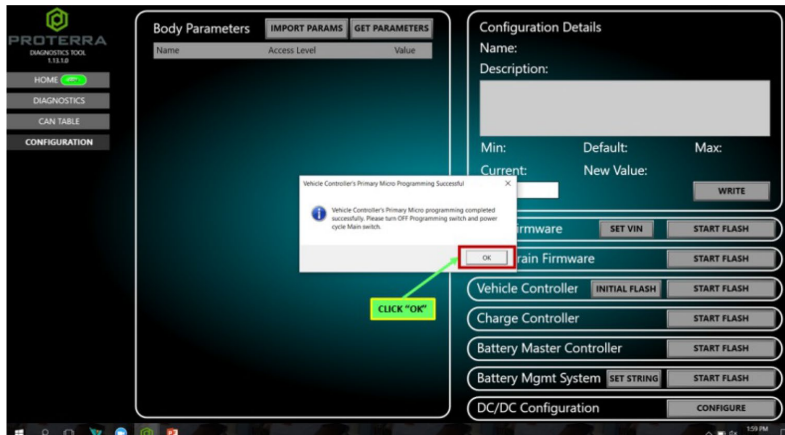


18. Answer the question by clicking “Yes” or “No” in the pop-up screen. If the ECU Serial Number ends with “M01-00”, click “Yes”. If the ECU Serial Number ends in “M02-00” or “M03-00” click “No”.

19. The following screen appears, wait for the programming process to complete.



20. When the programming process is complete, the following screen appears. Click “OK” to complete the process.



21. Disconnect the Nexiq Tool from the diagnostic port.
22. Turn off the hazard switch in the driver's workplace.
23. Turn off the LOTO Switch at the rear of the bus and turn it back on to reset the controller.
24. Return the bus to service.