



PROTERRA



TECHNICAL SERVICE BULLETIN

Issue Date:	03/08/2023
Subject:	ZX5.A0 Eberspaecher HVAC & Node 800v SW Release (Remington Eberspaecher Compressor RPM Threshold Change)
VINs or Models Affected:	All Remington Buses with Eberspaecher HVAC
Complete By:	Next Service Opportunity
Service Bulletin #:	SC-23-030
Labor Operation Code:	VA055

NOTE: This process will require up to 0.5 hours per bus.

Description:

This procedure increases the Eberspaecher compressor lower threshold RPM from 750 to 870 through the HVAC & Node 800v SW Release to resolve compressor resonance issues observed at the former threshold of 750 RPM.

Eberspaecher recently changed their discharge hose and isolator design due to reliability issues which created the resonance condition at 750 RPM.

Tools Required:

PN	Qty	Description
046618	1	HARNESS, HVAC DIAGNOSTIC (HVAC)
	1	PCAN cable

Software Required:

PN	Description
064022	SOFTWARE, HVAC, EBERSPAECHER, 800V NODE CONTROLLER

Procedure:

1. Power down the vehicle at the driver's workplace Master Switch.
2. Switch the CS Master Disconnect Switch to OFF.
3. Locate and remove the HMI HVAC fuse in the electronics cabinet (eCab). The fuse is typically positioned at CB212. Refer to the Fuse Box cover printed label to confirm the location of the HMI fuse.



4. Access the HVAC Low-Voltage connector by removing the Hadley overhead panel near the rear door.
5. Disconnect the HVAC Low-Voltage connector and install the HVAC diagnostic harness (046618) in between the HVAC Low-Voltage connector and CS harness connector.

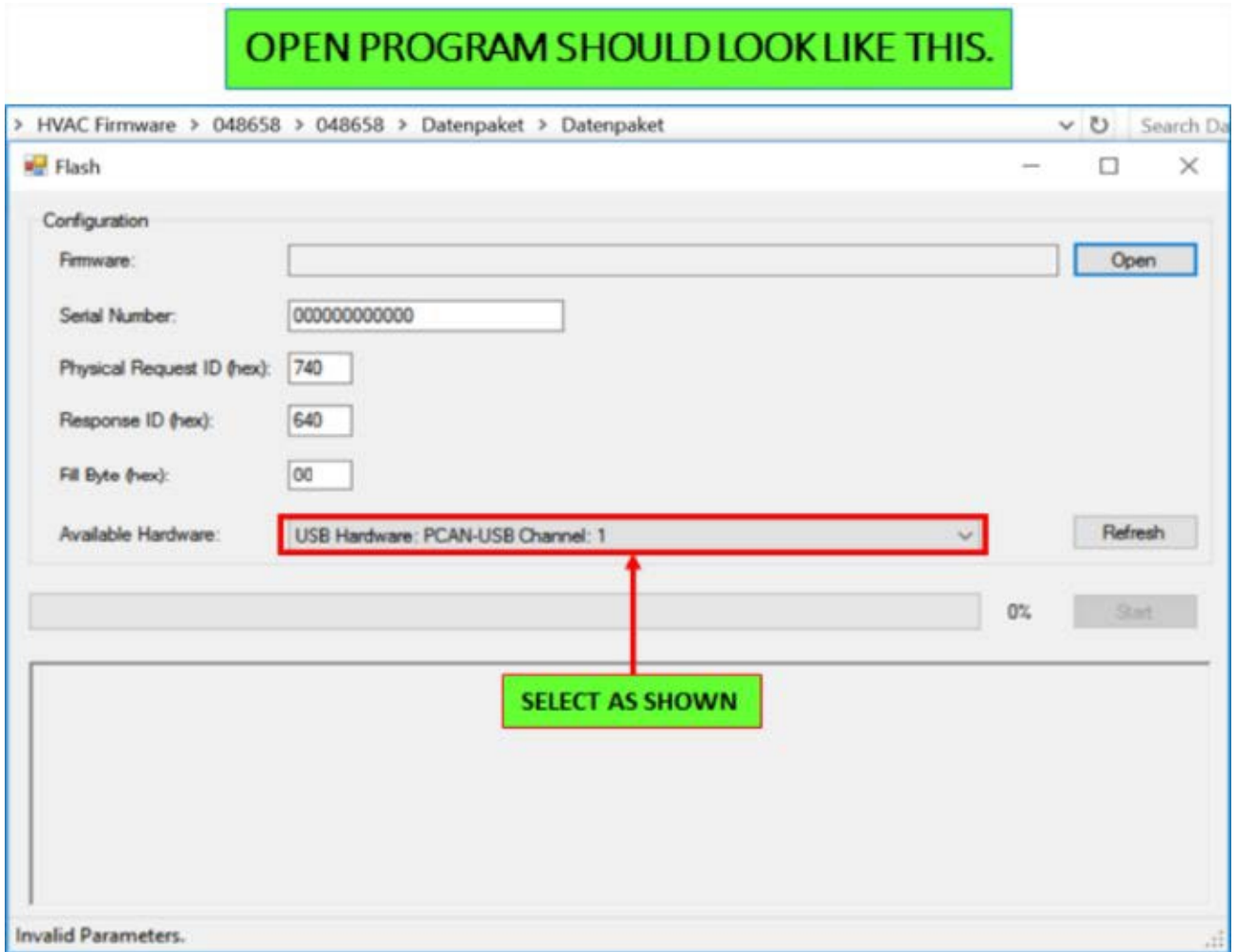
ATTACH PROGRAMMING HARNESS TO HVAC UNITE



**DISCONNECT CONNECTOR FROM HVAC
AND ADD PROGRAMMING HARNESS IN
BETWEEN**

6. Connect the PCAN cable to the other end of the HVAC diagnostic harness.
7. Connect the PCAN cable to the USB port on your laptop.
8. Turn the Master Disconnect Switch to the ON position, and turn on Low-Voltage at the driver's workplace.
9. Open the flash tool from PN 048658 in ARENA.
10. Download 064022 node software from the campaign page in Service Max.

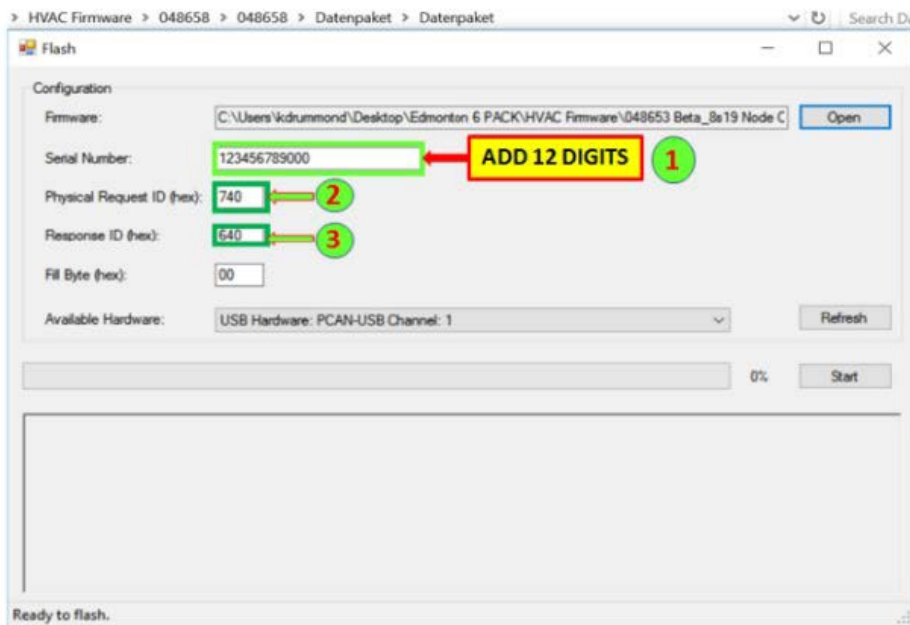
11. Select Hardware in flash tool.



12. Add any 12 digits to the serial number field.

Input 740, and 640 for physical request ID and response ID respectively.

- 1) UNDER SERIAL NUMBER TYPE IN ANY 12 DIGITS.
 - 2) PHYSICAL ID (hex): 740
 - 3) RESPONSE ID (hex): 640
- HVAC NODE FLASH USE



13. Click *Open* and select node software previously downloaded from Service Max.
14. Click *refresh* and *start* to run the program. Ensure programming is 100% complete.
15. Power off the vehicle at the driver's workplace and then the vehicle master disconnect switch.
16. Disconnect the HVAC programming harness and re-connect the CS harness to the Low-Voltage connector.
17. Close the Hadley overhead panel.
18. Replace the HMI HVAC fuse in the eCab fuse box.
19. Switch the CS Master Disconnect Switch to the ON position, and power-up the bus from the driver's workplace Master Switch.
20. Verify the HVAC controller display turns on at the Driver's overhead panel.