



TECHNICAL SERVICE BULLETIN

Classification: RS19-004D	Reference: NTB19-071D	Date: September 19, 2024
------------------------------	--------------------------	-----------------------------

DTC B00A0-00 STORED

This bulletin has been amended. See **AMENDMENT HISTORY** on the last page.
Please discard previous versions of this bulletin.

- APPLIED VEHICLES:**
- | | |
|----------------------------------|--------------------------------|
| 2013-2018 Altima (L33) | 2013-2020 Pathfinder (R52) |
| 2019-2024 Altima (L34) | 2022-2024 Pathfinder (R53) |
| 2017-2024 Armada (Y62) | 2014 Pathfinder Hybrid (R52H) |
| 2009-2014 cube® (Z12) | 2011-2017 Quest (E52) |
| 2022-2024 Frontier (D41) | 2014-2020 Rogue (T32) |
| 2011-2017 Juke (F15) | 2021-2024 Rogue (T33) |
| 2018-2024 Kicks (P15) | 2015-2019 Rogue Hybrid (T32H) |
| 2011-2017 LEAF (ZE0) | 2017-2022 Rogue Sport (J11) |
| 2018-2024 LEAF (ZE1) | 2013-2019 Sentra (B17) |
| 2016-2023 Maxima (A36) | 2020-2024 Sentra (B18) |
| 2014-2019 Micra (K13) | 2016-2024 Titan/Titan XD (A61) |
| 2015-2024 Murano (Z52) | 2014-2019 Versa Note (E12) |
| 2016 Murano Hybrid (Z52H) | 2012-2019 Versa Sedan (N17) |
| 2013-2021 NV200 (M20) | 2020-2024 Versa Sedan (N18) |
| 2014-2017, 2019 NV200 Taxi (M30) | |

IF YOU CONFIRM

DTC B00A0-00 (OCCUPANT DETECTION SENSOR UNIT) is stored,

AND

OCS zero point reset cannot be performed,

(continued on the next page)

IMPORTANT: The purpose of **ACTION** (next page) is to give you a quick idea of the work you will be performing. You **MUST** closely follow the entire **SERVICE PROCEDURE** as it contains information that is essential to successfully completing this repair.

Nissan Bulletins are intended for use by qualified technicians, not 'do-it-yourselfers'. Qualified technicians are properly trained individuals who have the equipment, tools, safety instruction, and know-how to do a job properly and safely. **NOTE:** If you believe that a described condition may apply to a particular vehicle, **DO NOT** assume that it does. See your Nissan dealer to determine if this applies to your vehicle.

AND

The following screen displays:

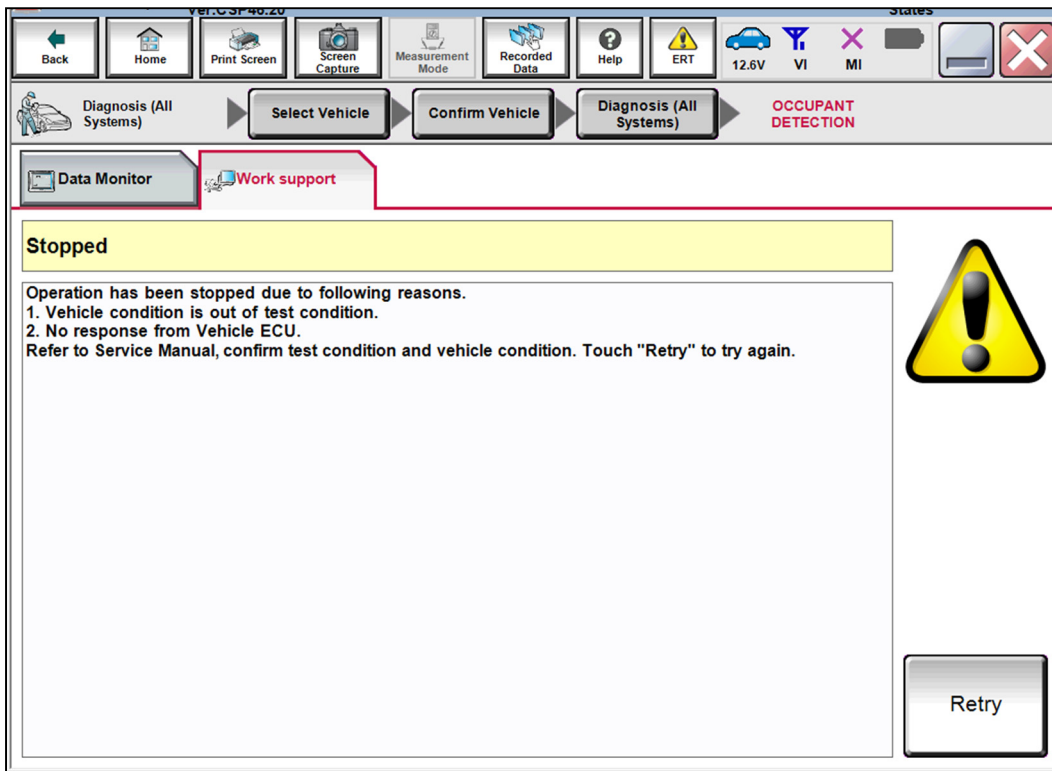


Figure 1

ACTION

1. Check the Occupant Classification System (OCS) control unit using the ODS Analysis tool software.
 - Refer to **SERVICE PROCEDURE** on page 4.

HINT: "OCS" also may be referred to as "ODS".
2. Perform "75-Zero RESET".

REQUIRED SPECIAL TOOLS

OCS Reprogramming Cable (USB Cable, VAG) - J-51594 (New part number: CO-J-51594)

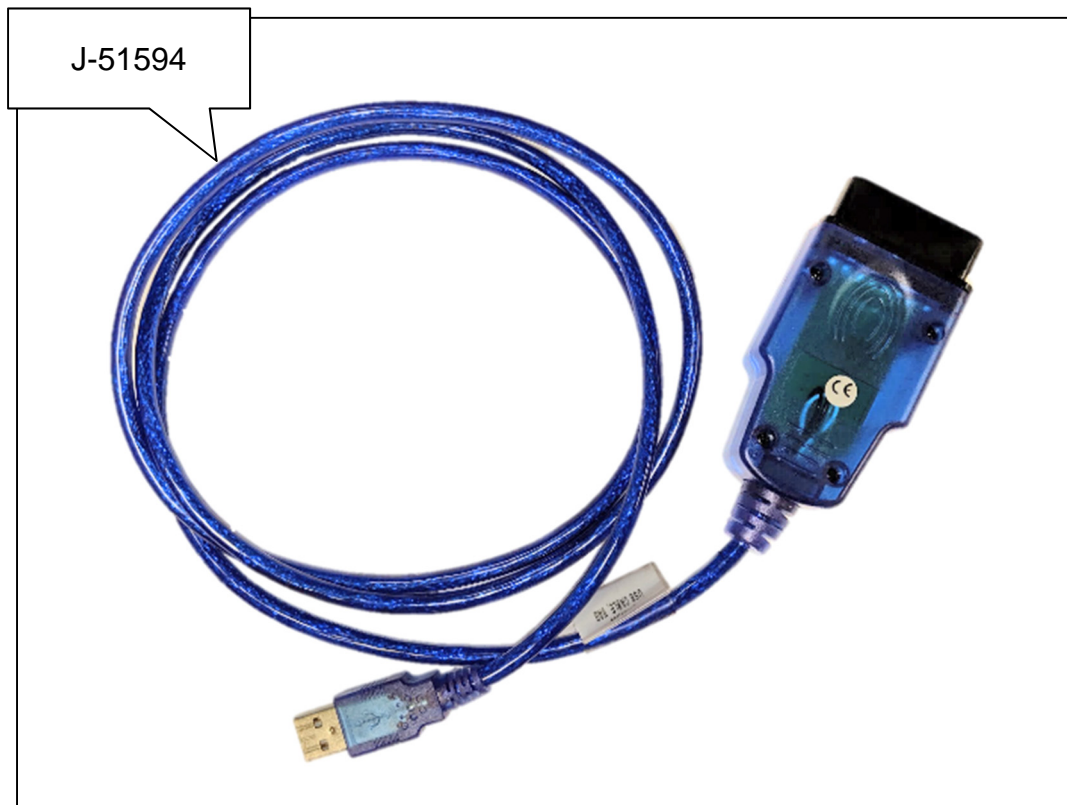


Figure 2

- Special (essential) tool J-51594 has been previously sent to each dealer.
- Additional tools are available from Tech•Mate online: www.techmatetools.com, or by phone: 1-833-397-3493.

HINT: When ordering, keep in mind that the tool part number has changed to CO-J-51594.

SERVICE PROCEDURE

HINT: “OCS” also may be referred to as “ODS”.

IMPORTANT: Before continuing, make sure:

- ASIST on the CONSULT PC has been synchronized (updated) to the current date.
- All CONSULT-III plus (C-III plus) software updates (if any) have been installed.
- The CONSULT PC is connected to the Internet (Wi-Fi or cable).
- Titan vehicles: This bulletin applies to ALL Titan vehicles.
- Titan XD vehicles: This bulletin does NOT apply to all Titan XD vehicles. This bulletin applies to Titan XD vehicles equipped with OCS, as indicated by the presence of a front passenger air bag status light (see Figure 3).



Figure 3

NOTICE

- Connect a battery maintainer or smart charger set to reflash mode or a similar setting. If the vehicle's battery voltage drops below 12.0V or rises above 13.5V during reprogramming, the OCS control unit may be damaged.
- Be sure to turn OFF all vehicle electrical loads. If a vehicle electrical load remains ON, the OCS control unit may be damaged.
- Be sure to connect the AC Adapter to the CONSULT PC. If the CONSULT PC battery voltage drops during reprogramming, the process will be interrupted and the OCS control unit may be damaged.
- Turn OFF all external Bluetooth® devices (e.g., cell phones, printers, etc.) within range of the CONSULT PC and tool J-51594. If Bluetooth® signal waves are within range of the CONSULT PC and/or tool J-51594 during reprogramming, reprogramming may be interrupted and the OCS control unit may be damaged.

1. For LEAF vehicles, confirm that the timer for charging and climate control is turned off. If the timer is ON, turn it OFF.
 - For all other vehicles, proceed to step 2.
2. Turn ON the ignition / EV system (engine OFF / not Ready).
3. Turn ON the hazard warning lamps.
4. Connect the Vehicle Interface (VI) to the vehicle.
5. Start the CONSULT PC and CONSULT-III plus (C-III plus), and then open ASIST to check for air bag related DTCs.
 - If any air bag related DTCs other than B00A0-00 are stored, perform diagnosis and repairs as needed.
6. Close C-III plus, but leave ASIST running.
7. Connect tool J-51594 to the vehicle DLC connector and the CONSULT PC USB connector.
 - Make sure tool J-51594 is securely connected at both ends.
8. Prepare the vehicle for OCS reprogramming as follows:
 - Park the vehicle on a level surface.
 - Keep the front passenger seat empty – place nothing on it.
 - Keep the vehicle empty of occupants – including the servicing technician.
 - Place the CONSULT PC outside of the vehicle on a suitable table/support.
 - Do not set the CONSULT PC on the vehicle.
 - Do not touch the vehicle during OCS Reprogramming.
 - Minimize vehicle vibrations.

- On the left side of ASIST's main menu, select **Specialty Tools**, and then select **ODS Analysis Tool**.

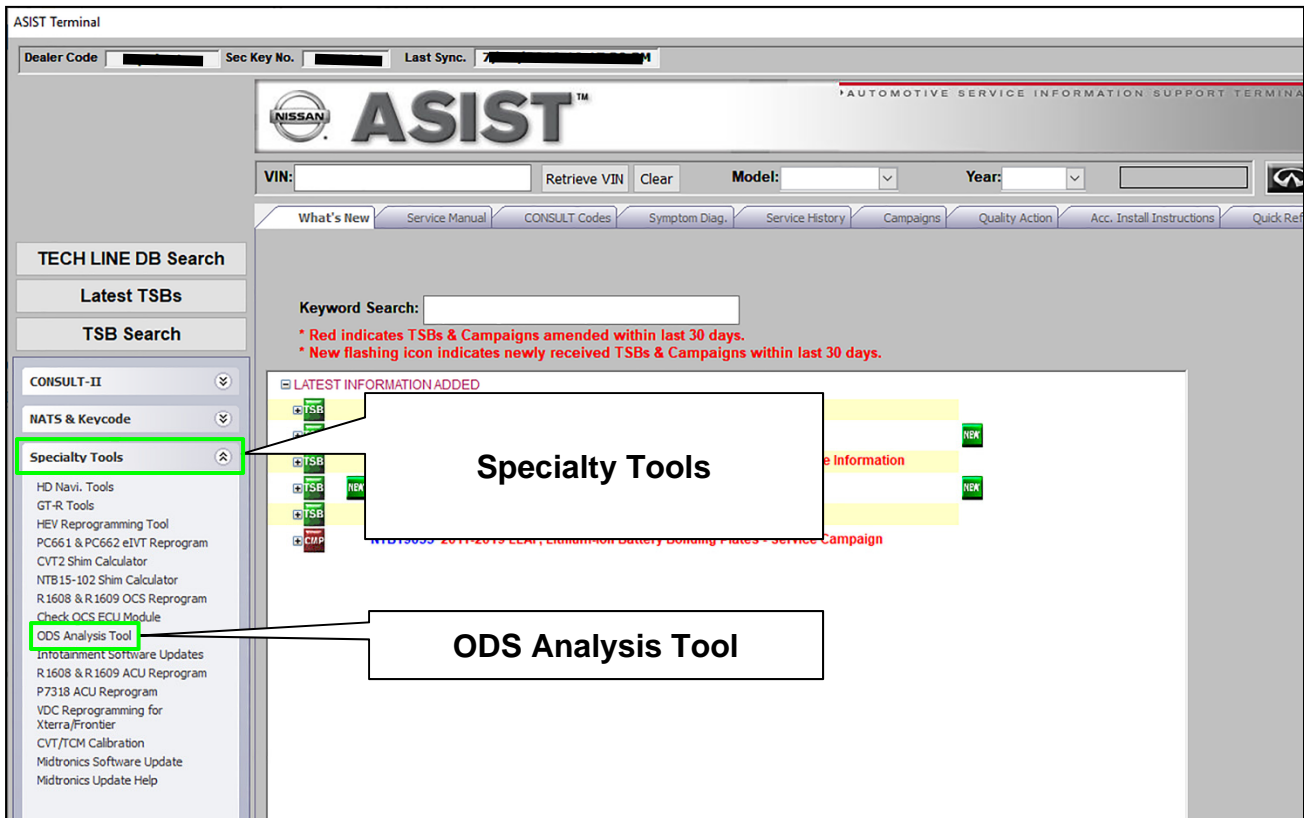


Figure 4

- Enter the vehicle model and the last eight (8) characters of the VIN in the corresponding spaces, and then select **CHECK**.

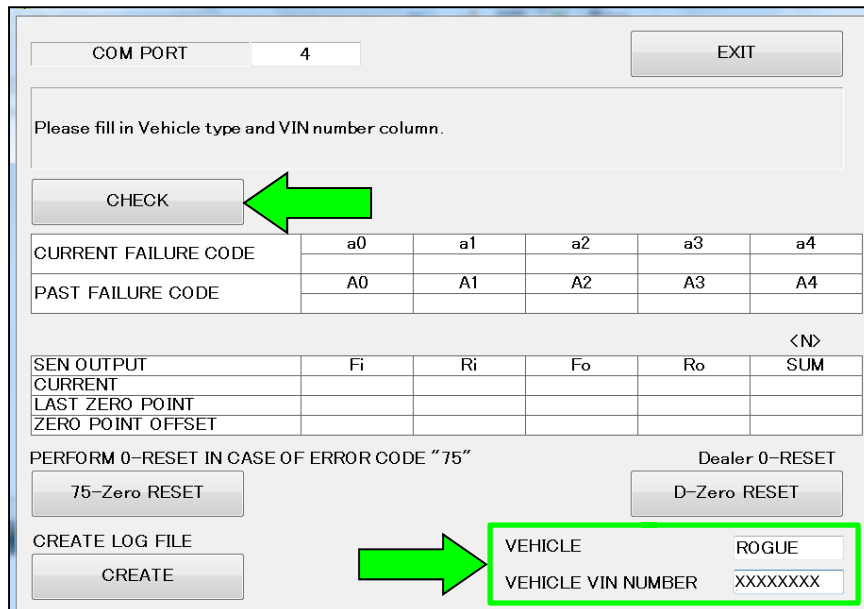


Figure 5

11. Select **OK**.

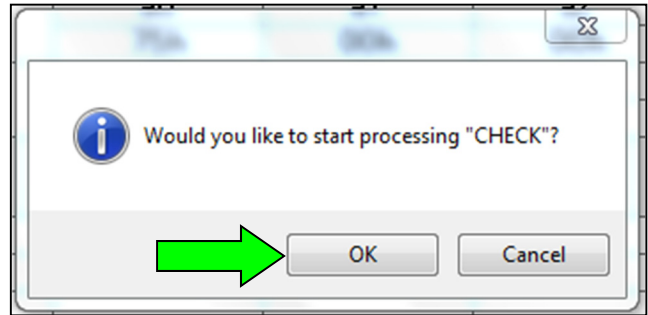


Figure 6

12. Check for code "75h" to show under **CURRENT FAILURE CODE**.

- If code "75h" shows under **CURRENT FAILURE CODE**, go to step 13.
- If code "75h" does not show under **CURRENT FAILURE CODE**, STOP HERE. This bulletin does not apply. Refer to ASIST and the ESM for further diagnostic assistance.

13. Select **75-Zero RESET**.

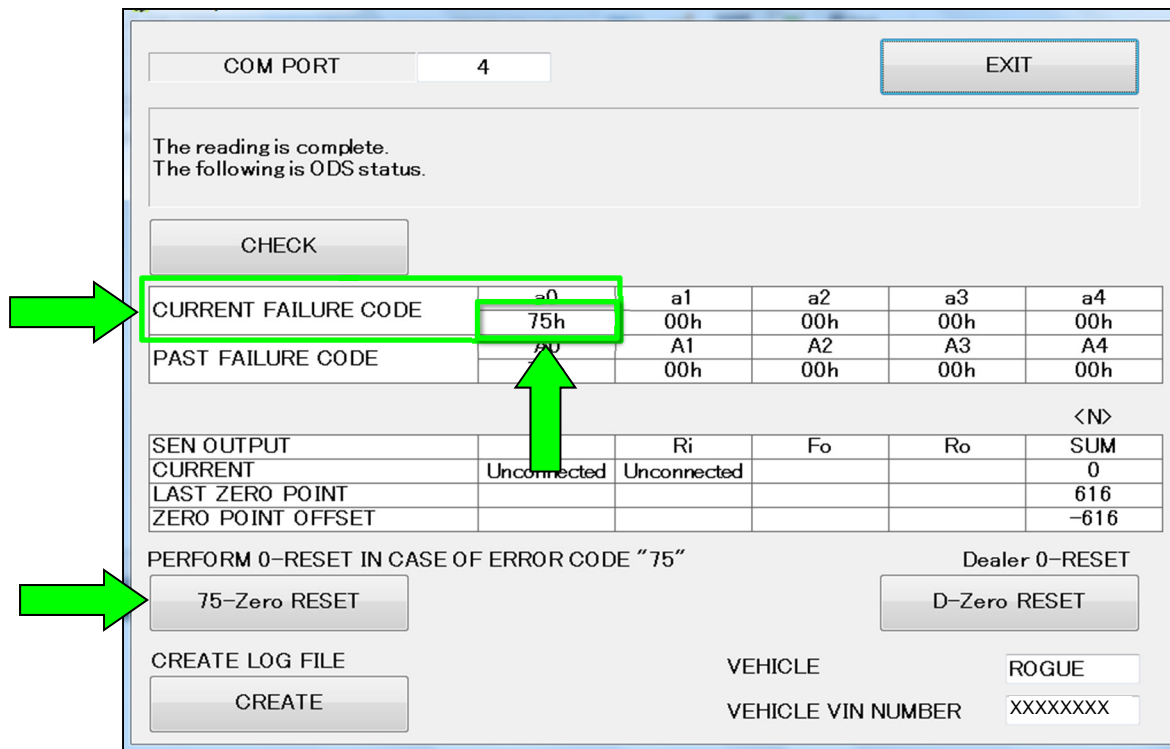


Figure 7

14. Select **OK**.

- The 75-Zero reset process will run for about 7 seconds.

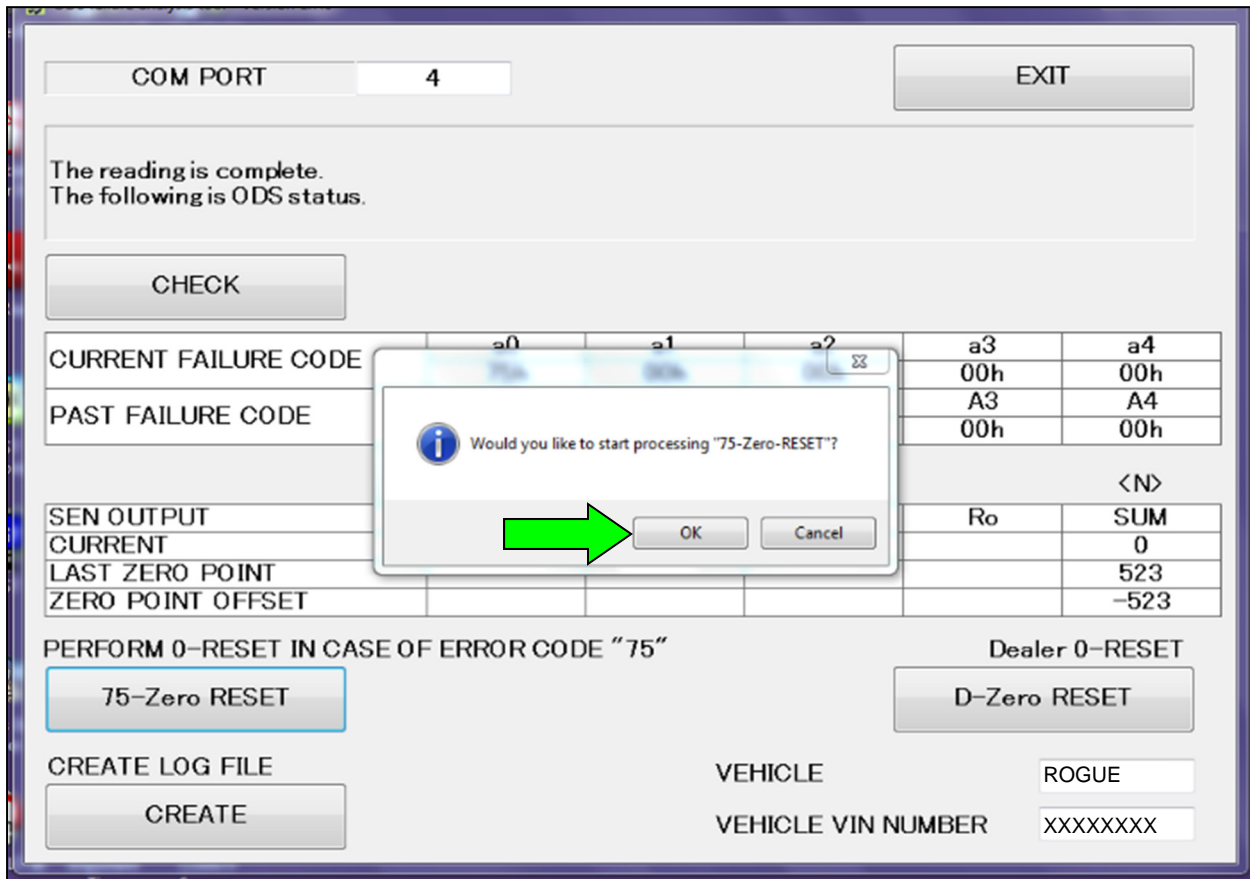


Figure 8

15. When the screen in Figure 9 displays, turn OFF the ignition, and then turn ON the ignition.

16. After turning ON the ignition, select **OK**.

- The 75-Zero reset process will run for about another 7 seconds.

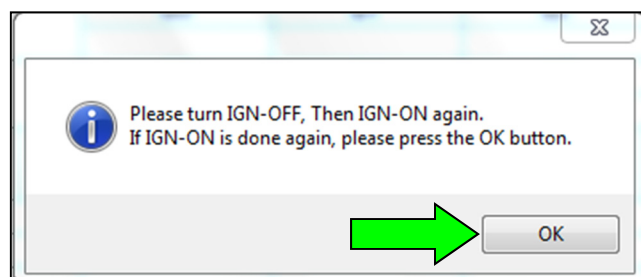



Figure 9

17. When the screen in Figure 10 displays, the 75-Zero reset process is complete.
 - Verify code “75h” is not displayed under **CURRENT FAILURE CODE**.
18. Select either **EXIT** or the  in the upper right corner (see Figure 10).

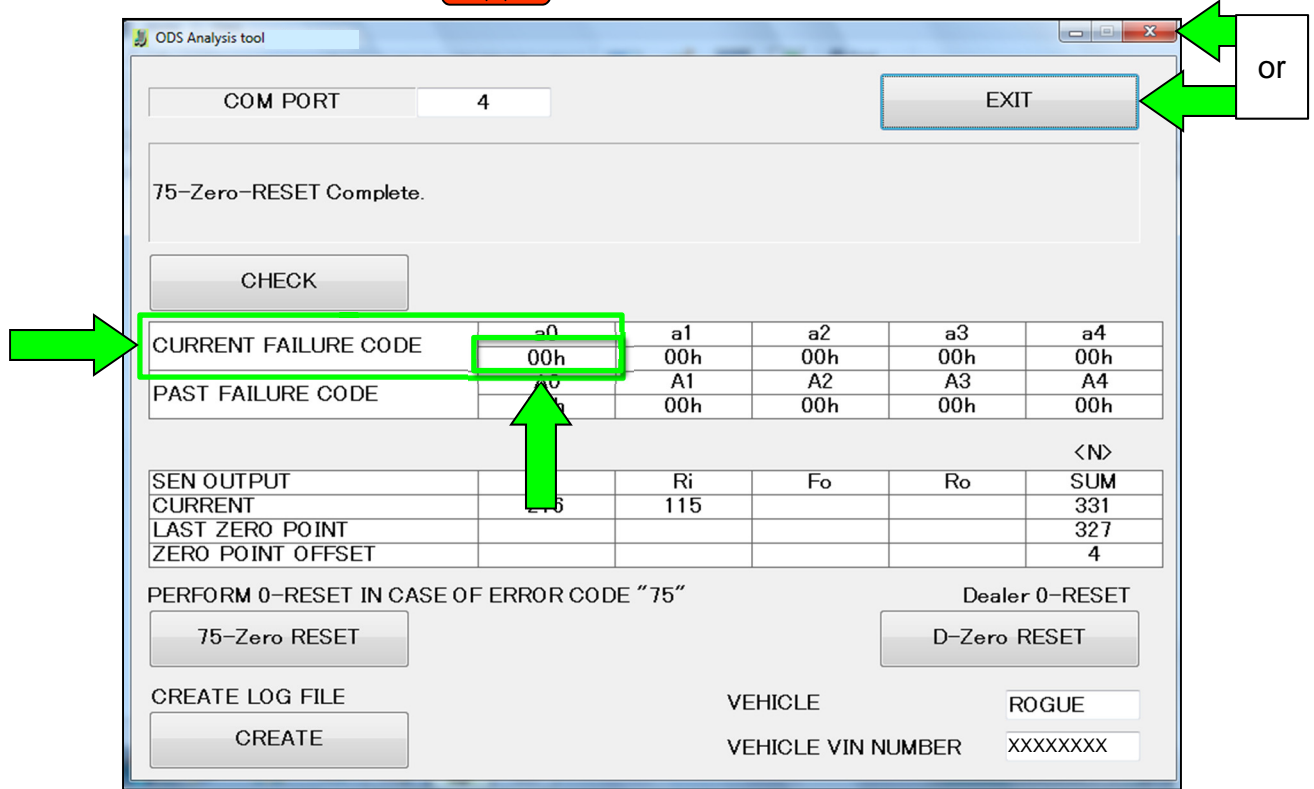


Figure 10

19. Turn OFF the ignition, and then turn ON the ignition.
20. Disconnect tool J-51594, and then connect the VI to the CONSULT PC and the vehicle.
21. After the VI is recognized, select **Diagnosis (All Systems)**.

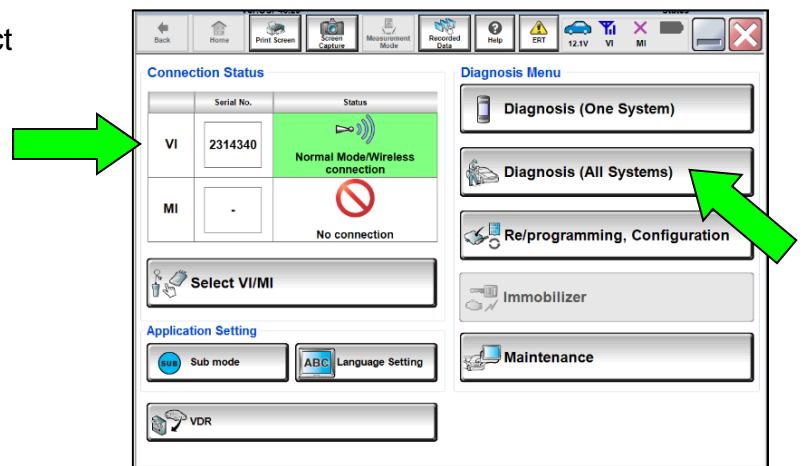


Figure 11

22. Verify the vehicle information is correct, and then select **Confirm**.

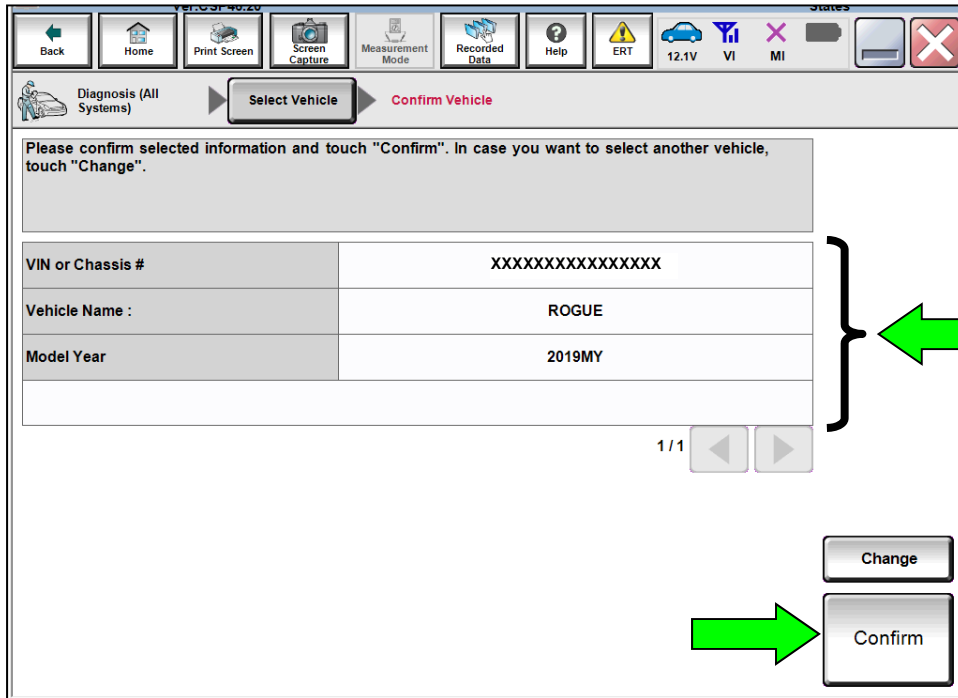


Figure 12

23. Select **AIR BAG**.

- DTC B00A0-00 should be the only DTC displayed.
- If DTC B00A0-00 is not the only DTC displayed, perform diagnosis and repairs as needed.

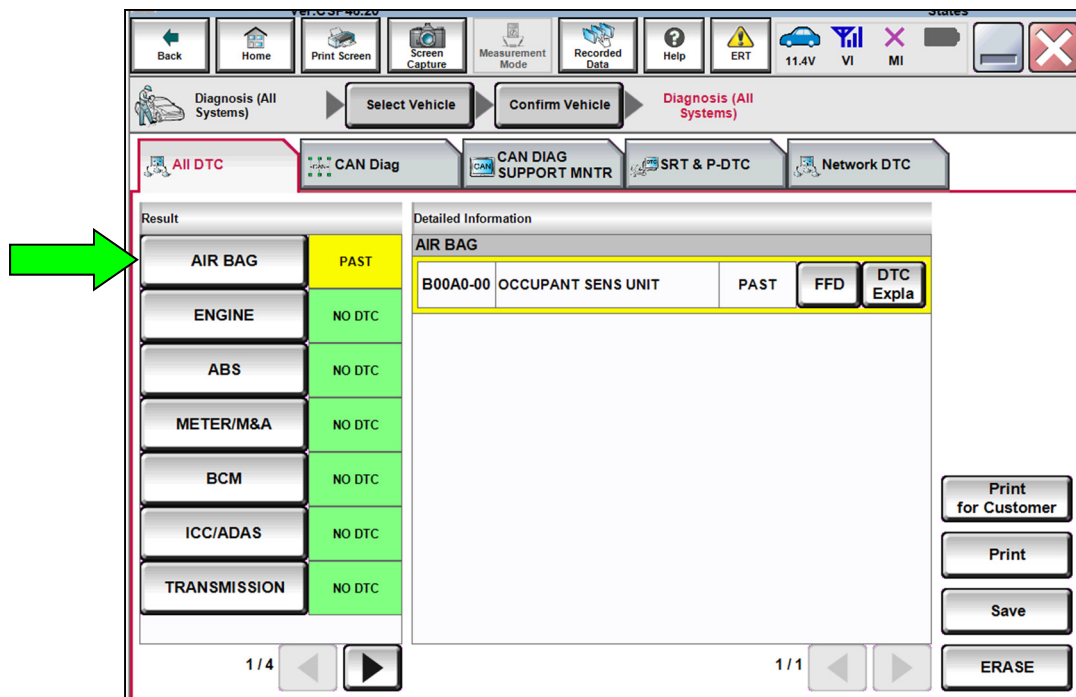


Figure 13

24. Select **ERASE**.

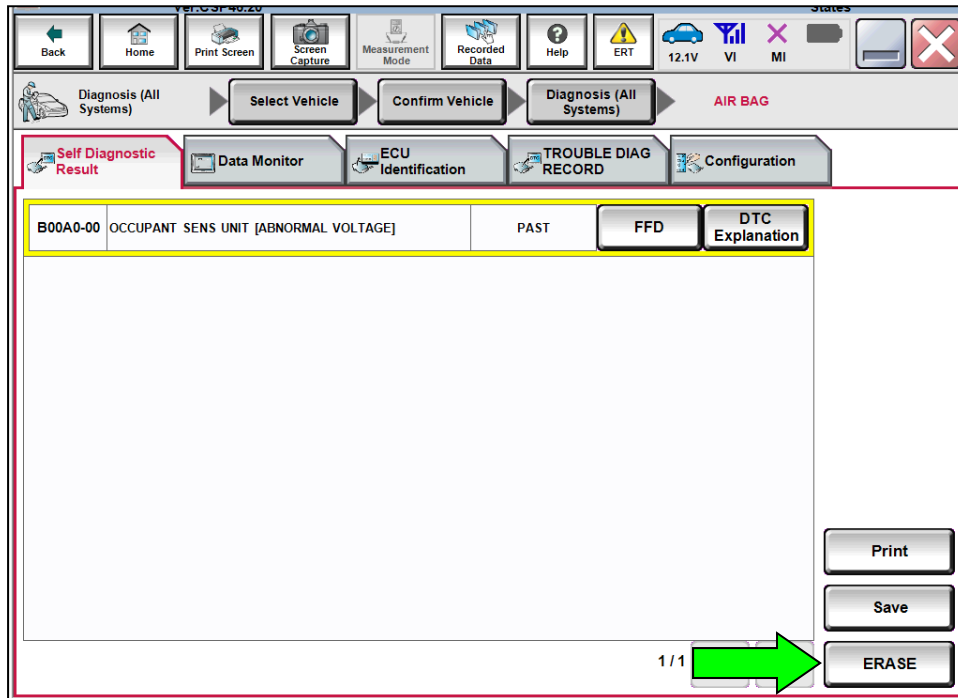


Figure 14

25. Select **Execute**.

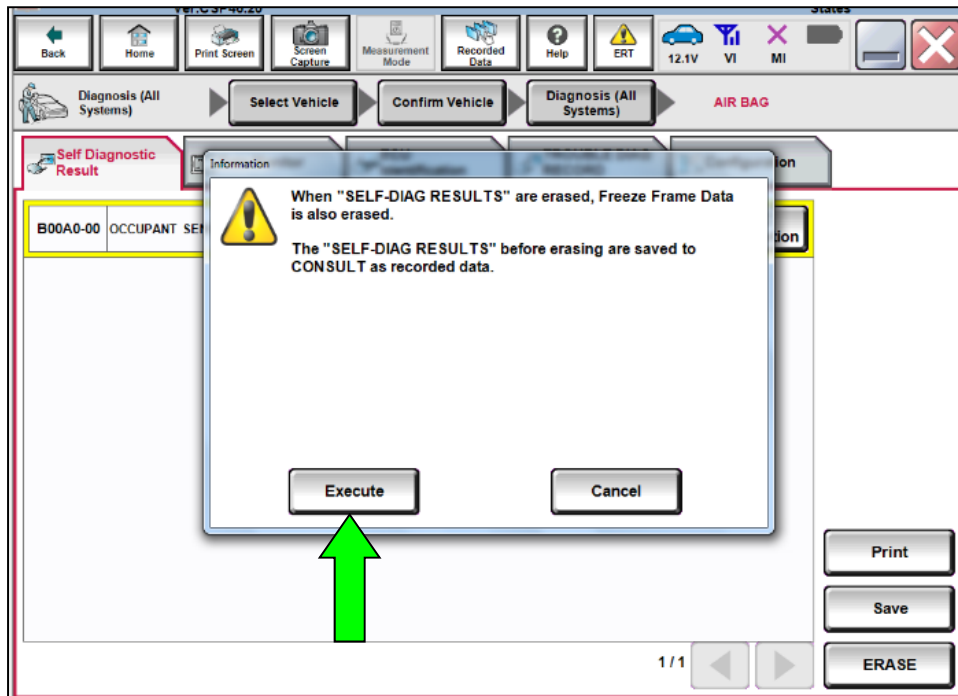


Figure 15

26. Select **Close**.

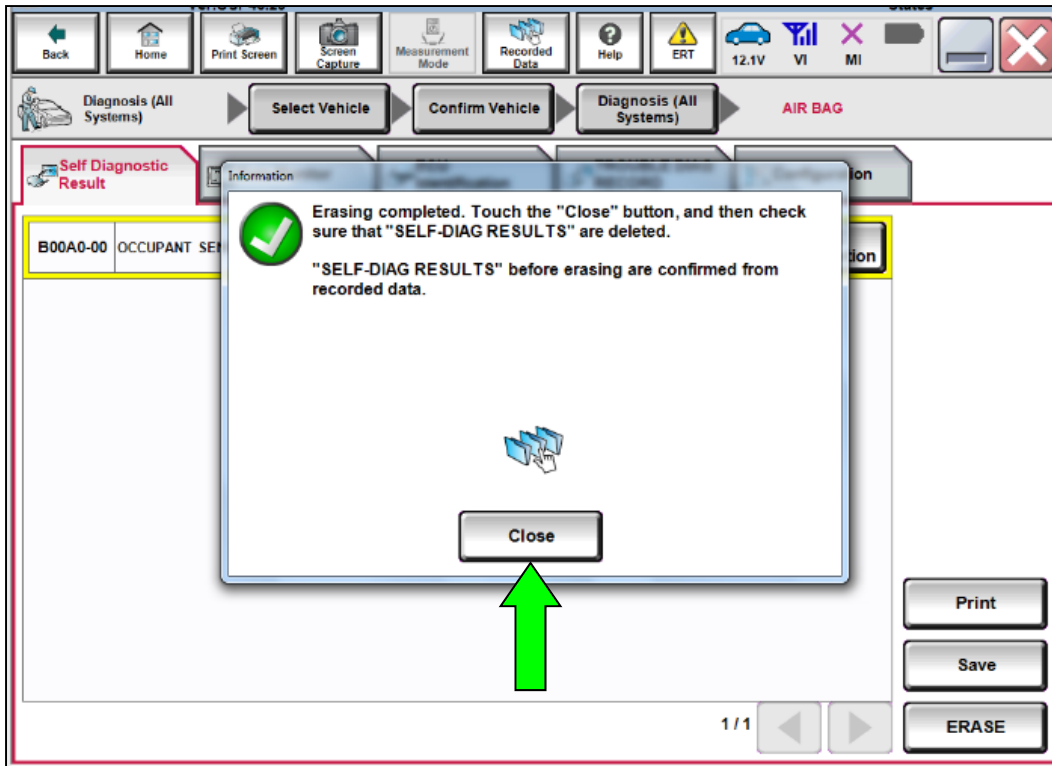


Figure 16

- After selecting **Close**, the screen in Figure 17 should display (the DTC is erased).

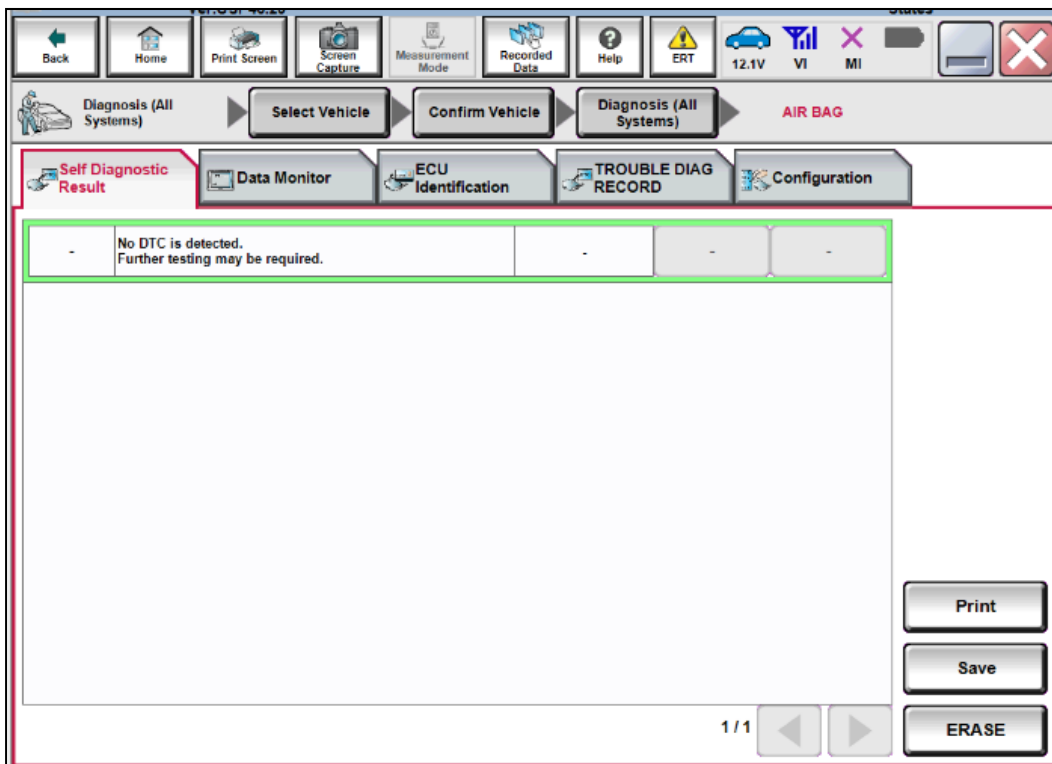


Figure 17

27. Turn OFF the ignition and disconnect the battery maintainer/smart charger.
28. Turn OFF the hazard warning lamps.
29. Close C-III plus and the CONSULT PC.
30. Disconnect the VI from the vehicle.
31. LEAF vehicles: If turned OFF at the beginning of the service procedure, turn ON the timer for charging and/or climate control, as it applies.

CLAIMS INFORMATION

Submit a Primary Part (PP) type line claim using the following claims coding:

DESCRIPTION	PFP	OP CODE	SYM	DIA	FRT
Perform 75 - Zero Reset	(1)	RX8NAA	HC	32	0.4

- (1) Reference the Electronic Parts Catalog and use the Occupant Sensor (98856-*****) as the Primary Failed Part (PFP).

AMENDMENT HISTORY

PUBLISHED DATE	REFERENCE	DESCRIPTION
September 12, 2019	NTB19-071	Original bulletin published
March 5, 2021	NTB19-071A	APPLIED VEHICLES revised
April 26, 2022	NTB19-071B	APPLIED VEHICLES revised
March 9, 2023	NTB19-071C	APPLIED VEHICLES and pages 3, 5, and 10 revised
September 19, 2024	NTB19-071D	2024 Model Year added to L34, Y62, D41, P15, ZE1, Z52, R53, T33, B18, A61, N18; battery voltage range on page 5 revised