



# TECHNICAL SERVICE BULLETIN

<b>ISSUE DATE:</b>	05/04/2023
<b>SERVICE BULLETIN SUBJECT:</b>	RR and ZX5 CAN Gateway Update
<b>VINs or MODELS AFFECTED:</b>	Service Specified Buses
<b>COMPLETE BY:</b>	Next Service Opportunity
<b>SERVICE BULLETIN #:</b>	SC-23-062
<b>LABOR OPERATION CODE:</b>	EE50Z

**NOTICE!** It is expected that this process may require up to 1.5 hours per bus. Please schedule appropriately to minimize vehicle downtime.

## RR and ZX5 CAN Gateway Update

### Description:

The procedure describes the process of updating the Customer CAN Gateway to improve data retrieval on RR and ZX5 vehicles.

**Tools/Parts Required:**

**Tools and Supplies Required:**

Drill	
Phillips Head Bit	

**Kit Parts Required:**

063203	SERVICE KIT: CAN GATEWAY UPDATE ROADRUNNER/HERON (Consisting of)	
024976-004	SCREW, DRILLING, MODIFIED TRUSS, #8-18x1.25	2 EA
187-8303	HARNESS, CAN GATEWAY JUMPER (CNGJ)	1 EA
177-4502	GATEWAY, CAN, ROADRUNNER6	1 EA

## Procedure:

1. Use the Proterra approved Lockout/Tagout procedure to make the bus safe for work.
2. Locate old CAN Gateway (PN: 043330) on the ITS Plate.

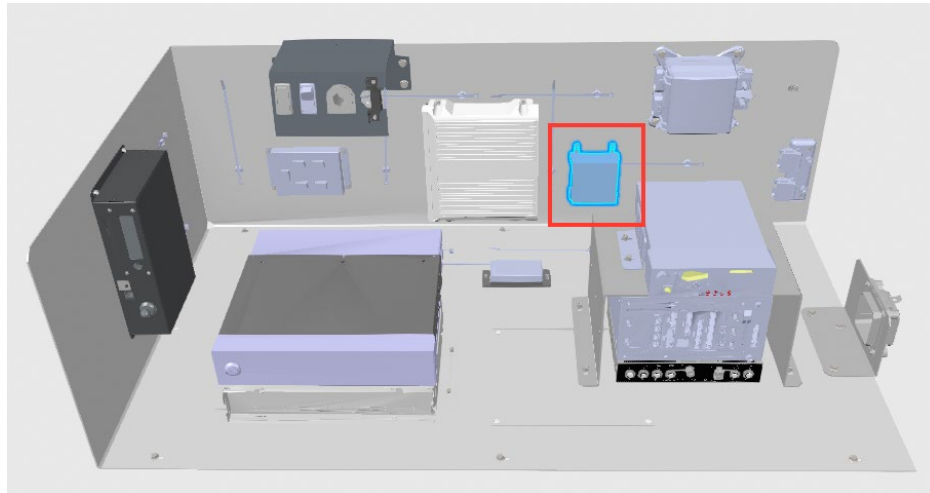
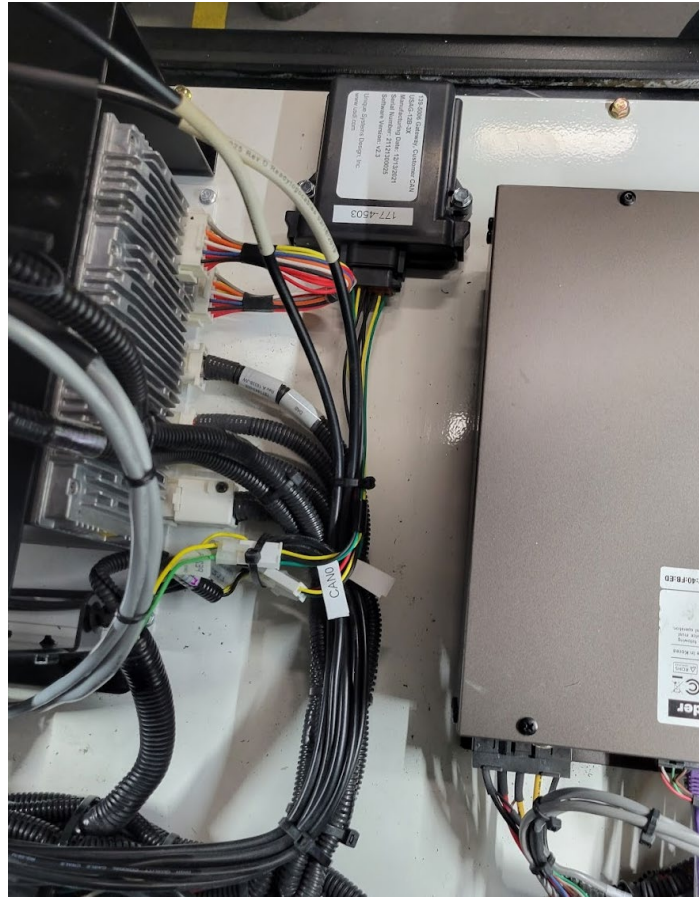


Figure 1: CAN Gateway location

3. Disconnect the CAN Gateway and remove from the ITS Plate.
4. Connect Harness (PN: 187-8303) to the existing CAN connections on the ITS harness that were unplugged from the CAN gateway. This will be the jumper for the new gateway connection.
5. Locate area for new CAN Gateway. This should be the same location as the old on most configurations.
6. Mount the CAN Gateway to the location via self-tapping screws (PN: 024976-004).

7. Connect jumper harness to new CAN Gateway as shown in Figure 2.



*Figure 2: Final Installation Example*

8. Confirm customer equipment is properly functioning.
9. Remove the Lockout/Tagout devices and return the bus to service.