



# TECHNICAL SERVICE BULLETIN

<b>ISSUE DATE:</b>	06/07/2023
<b>SERVICE BULLETIN SUBJECT:</b>	ZX5 Destination Sign Upper Support Brackets
<b>VINs or MODELS AFFECTED:</b>	Service Specified Buses
<b>COMPLETE BY:</b>	Next Service Opportunity
<b>SERVICE BULLETIN #:</b>	SC-23-069
<b>LABOR OPERATION CODE:</b>	FS42Z

<b><u>Labor Table</u></b>				
	Operation	Number of Technicians	Hours	Labor Time (T x H)
1	Step 1 – Step 2	1	2	2
2	Step 3 – Step 4	2	2	4
3	Step 5 – Step 6	1	1	1
4	Step 7 – Step 9	2	2	4
5	Step 10 – Step 11	1	2	2
		Total Labor Time		13

## **ZX5 Destination Sign Upper Support Brackets**

### **Description:**

The procedure describes the process of replacing the overhead bracket and brackets between hat bracket overhead to a more robust design.

### **Notice:**

SC-23-069 will be ran in conjunction with SC-23-001 - Destination Sign M6 Fastener Retrofit. Utilize the fasteners from SC-23-001 at the end of this campaign procedure.

**Tools/Parts Required:****Tools and Supplies Required:**

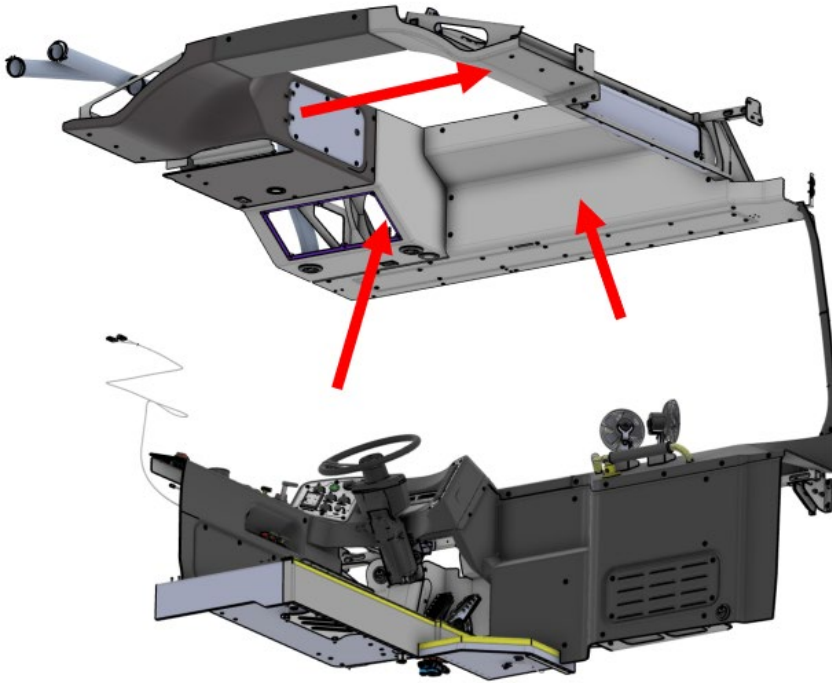
Ratchet
13mm Socket
10mm Socket
Calibrated Torque Wrench
Orange Torque Stripe Paint

**Kit Parts Required:**

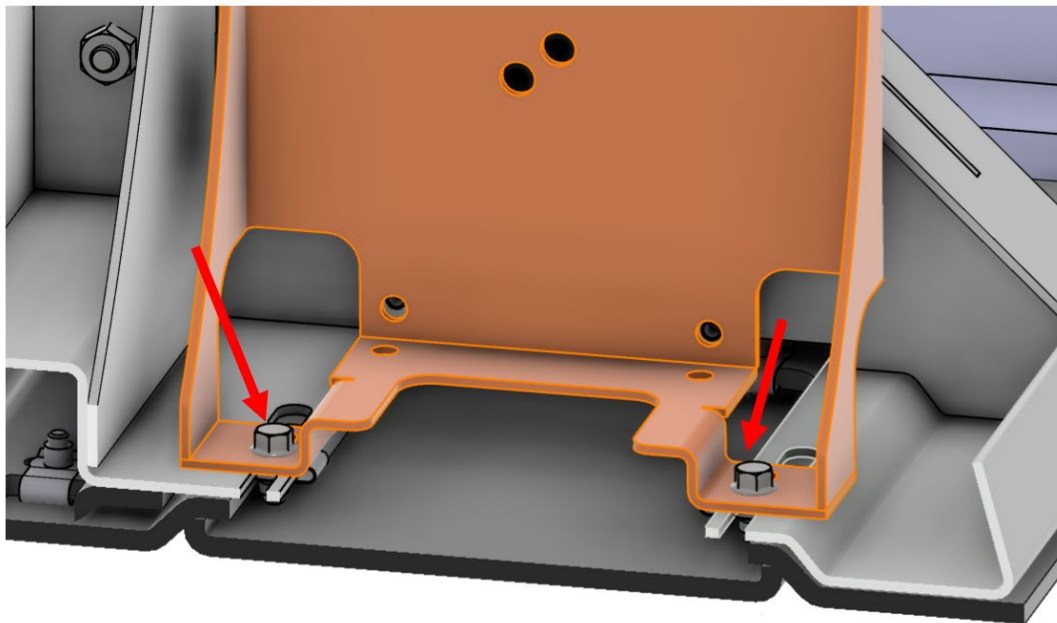
063932	SERVICE RETROFIT KIT, DEST SIGN OVERHEAD and SUPPORT BRACKETS (Consisting Of)		
	187-3462	BRACKET, MOUNTING, UPPER FRAME, STREETSIDE	1 EA
	183-0764	BRACKET, MOUNTING, UPPER FRAME, CURBSIDE	1 EA
	005450	LKNT,HEX,FLANGE,STL, ZPL,CLASS 10, M10-1.5	6 EA
	051619	FRAME, OVERHEAD, FRONT DESTINATION SIGN	1 EA
	005443-002	BOLT,HEX,FLANGE,STL,YZPL,CLASS 10.9, M8-1.25X16X16	16 EA
	030266	U-NUT, M6, 0.8-4.0mm THICK	40 EA
	019493-005	SCREW,BUTTON,FLG,TORX,SS,EPOXY BLACK, M6-1.0X25X25	40 EA
	033222	WASHER, DIN 9021, STL, HDN, BLK WATCH #53259, M6	40 EA
	005442-003	BOLT,HEX,FLANGE,STL,YZPL,CLASS 10.9, M6-1.0X16X16	4 EA

## Procedure:

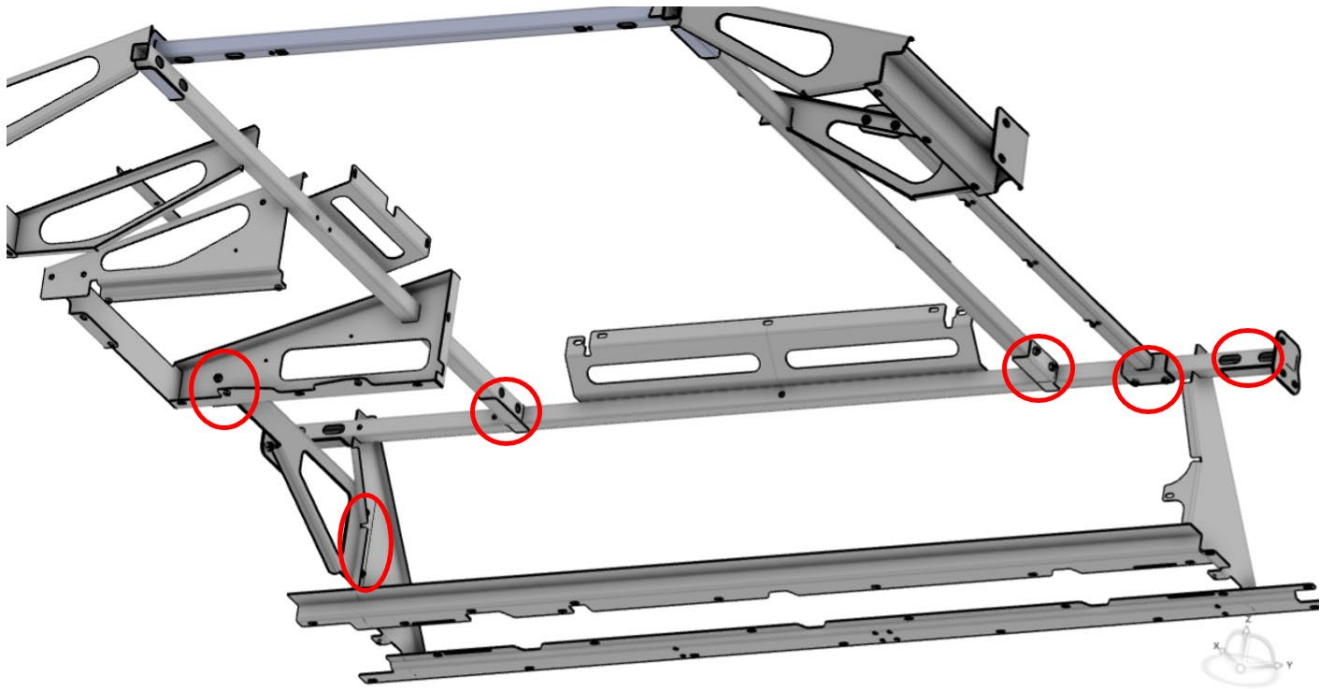
1. Use the Proterra approved Lockout/Tagout procedure to make the bus safe for work.
2. Remove overhead interior paneling to allow access to the destination sign mounting bracket.



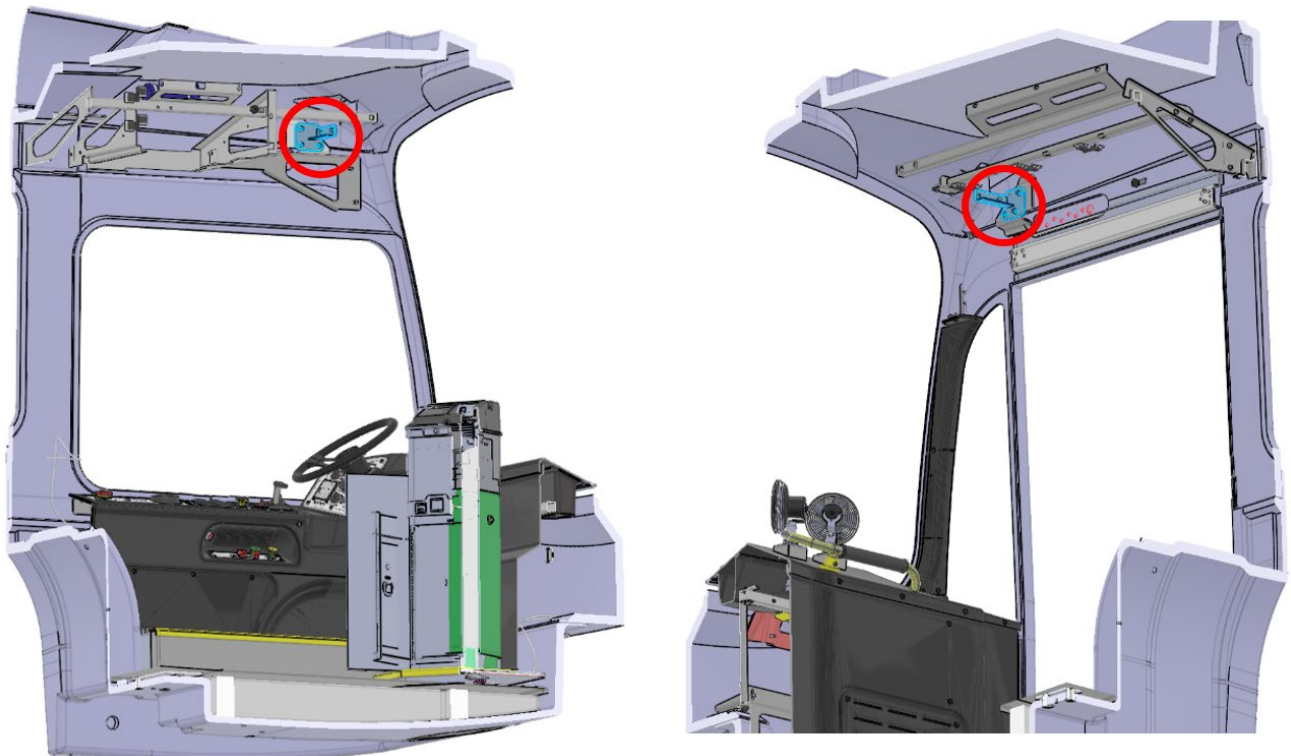
3. If a destination sign is installed, remove the destination sign by unscrewing the QTY 4 M6 fasteners and unplugging any necessary electrical harnesses.



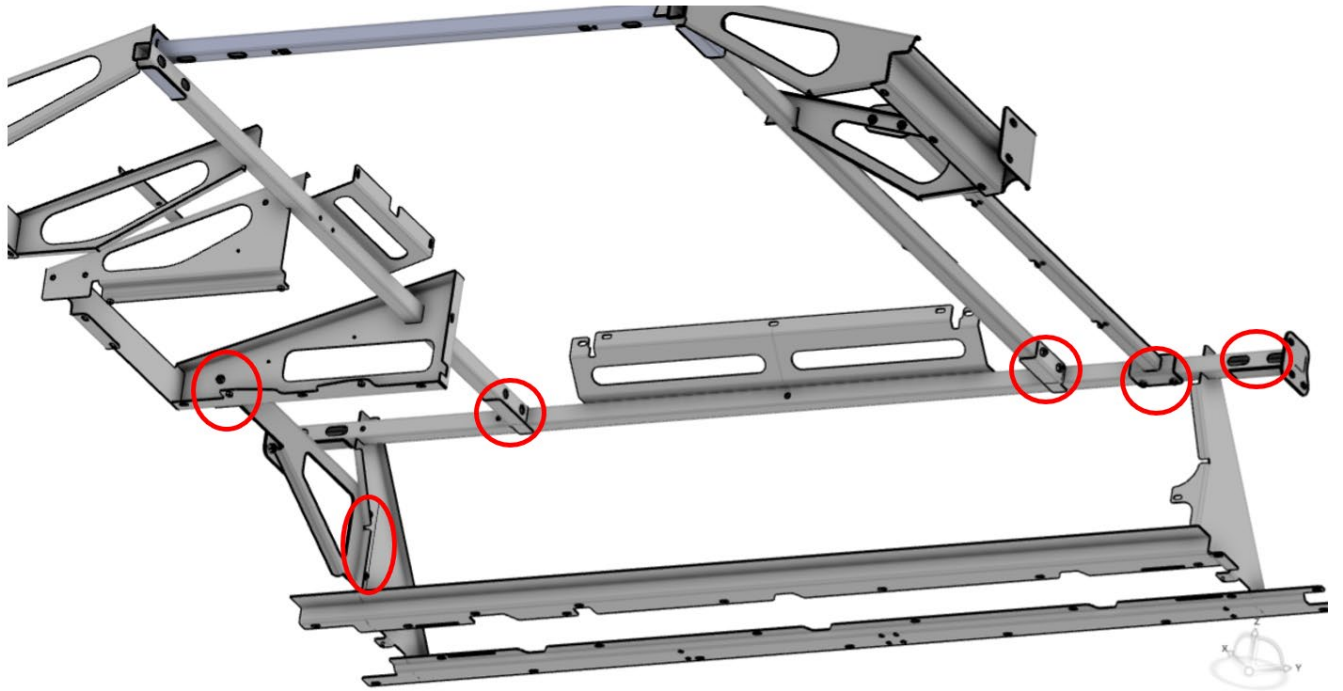
4. Remove the Destination sign bracket from the bus by unbolting the M8 fasteners in the shown locations.



5. Remove the outer support brackets by removing the QTY 3 M10 nuts on each side.

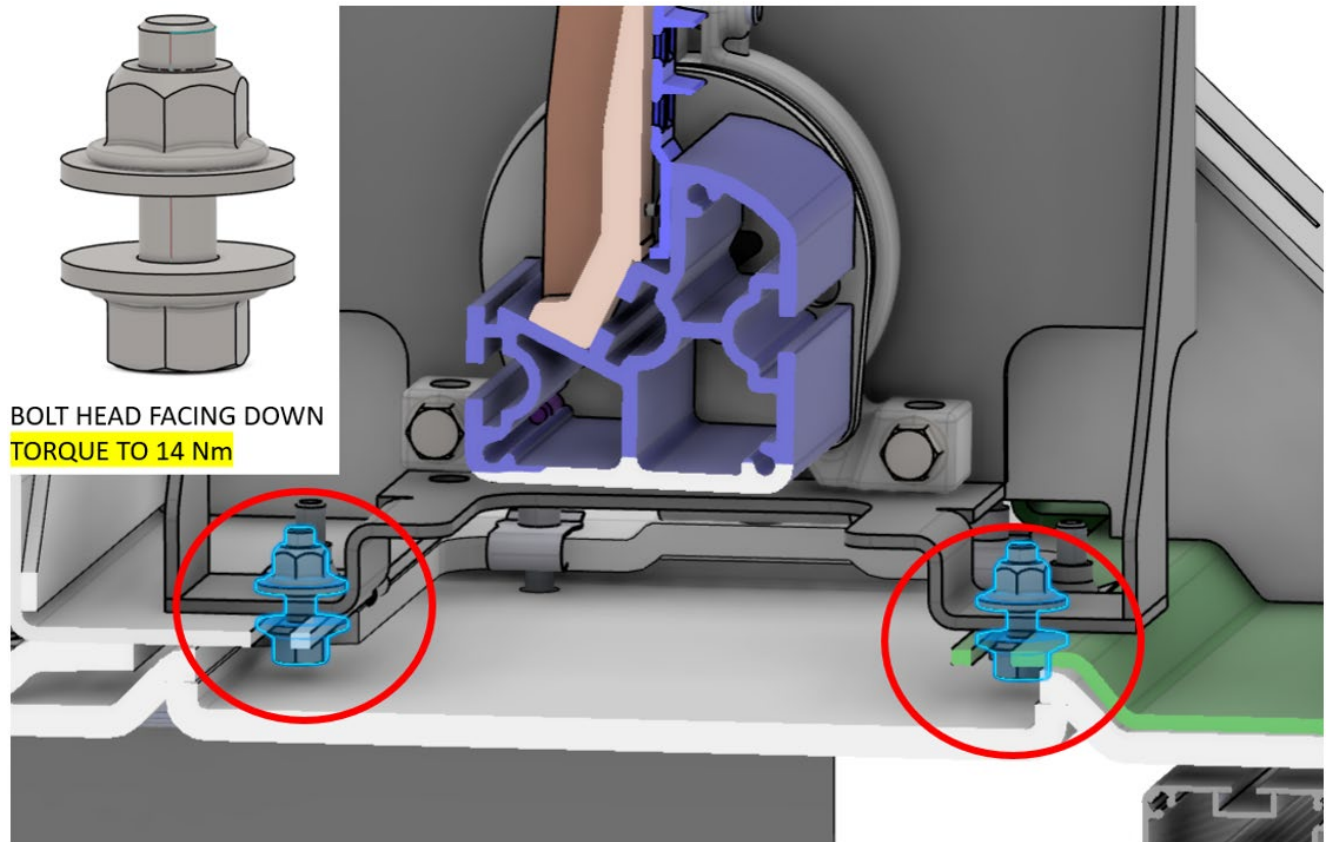


6. Install the new brackets (PN: 183-0764 and PN: 187-3462) using new QTY 6 M10 lock nuts (PN: 005450). Torque M10 lock nuts to 61 Nm (45 ft-lb) and apply torque stripe.
7. Install the destination sign frame (PN: 051619) to the new curb side and street side support brackets using provided bolts (PN: 005443-002) QTY 2 to each side. Torque M8 bolts to 31 Nm (23 ft-lb) and apply torque stripe.



8. Install destination sign using M6 from SC-23-001.

a . **SC-23-001 - M6 Fasteners:** Install destination sign using 20mm M6 fasteners (PN: 005442-004), M6 washers (PN: 005448) and M6 Locknut (PN: 005448). Torque M6 fasteners to 14 Nm (10 ft-lbs).



9. Install trim paneling with new M6 fasteners and washers. Torque to 5-7 Nm (4-5 ft-lb).

10. Remove the Lockout/Tagout devices and return the bus to service.