



SIB 11 04 24

2024-10-16

B58D ENGINE: VARIOUS WASTEGATE FAULTS STORED IN THE DME

☐ THIS REPAIR IS MOBILE FRIENDLY
MODEL

G20 (3 Series Sedan)	G22 (4 Series Coupe)	G23 (4 Series Convertible)	G26 (4 Series Gran Coupe)
G42 (2 Series Coupe)			

- All with the B58D engine
- Only vehicles with all wheel drive (xDrive), produced prior to June 1, 2024

SITUATION

One of the following faults are stored in the DME:

123432 - Electrical wastegate valve, adaptation: Limit position shut, implausible

123433 - Electrical wastegate valve, adaptation: adjustment range implausible

123511 - Electrical wastegate valve: stiff movement

PROCEDURE

1. Inspect the wastegate lever and mechanism for corrosion.



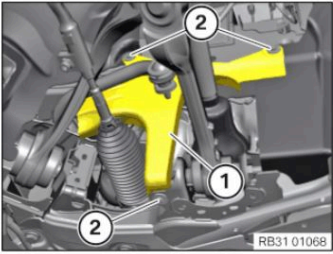
2. If the turbocharger wastegate lever is binding due to the corrosion as shown, then the complete turbocharger needs to be replaced.

Refer to repair instruction 11 65 020 "Removing and installing/replacing exhaust turbocharger".

Removing and installing/replacing exhaust turbocharger »

Remove the cover of the steering assembly

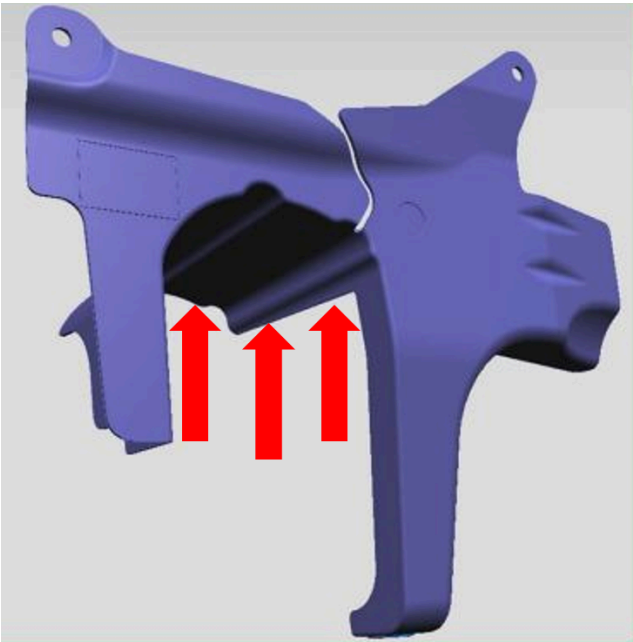
REP-TAT-P-5175-01-G20_AWD



- Loosen screws (2).
- Remove cover (1).

3. During the turbocharger replacement procedure, remove the cover for the steering assembly.

The yellow highlighted cover is shown in step 23/61 of the repair instruction.



4. Do not reinstall the originally fitted cover for the steering assembly- Replace it with P/N 51 71 9 642 700.

The new cover for the steering assembly has an increased protection surface to avoid turbocharger wastegate corrosion.

See red arrows.

PARTS INFORMATION

Obtain and confirm the part numbers for your specific vehicle by entering the chassis number in either ETK or AIR which considers specific equipment and/or options.

Part Number	Description	Quantity
51 71 9 642 700	Cover for steering assembly, front right	1
Refer to ETK/AIR	Exhaust turbocharger w. exhaust manifold	1
Refer to ETK/AIR	Exhaust manifold/turbocharger gasket	1

Bulk Supply Materials - Sublet

Part Number	Description (Model, Model Year Specific)	Quantity
83 19 5A32851	HT-12 Antifreeze RTU (Bulk DN = 1/10 Liter) (Pre-mix)	As needed
Or:		
83 19 2468442	BMW Antifreeze/Coolant (DN = 1 Gallon Concentrate) - HT-12	As needed

Or:

Part Number	Description (Model, Model Year Specific)	Quantity
82 14 1 467 704	Coolant (DN = 1 Gallon Concentrate)	As needed

Additionally, other materials and small parts that are not specified above, such as fluids, lubricants, one-time use screws, nuts, and seals, which must be replaced or installed (according to the ISTA repair instructions/ETK/AIR), are to be selected from the Electronic Parts Catalog, and/or other approved BMW Group resources according to the respective vehicle type. Invoiced these items separately under the Repair Code listed in this bulletin.

CLAIM INFORMATION

Covered under the terms of the BMW New Vehicle Limited Warranty for Passenger Cars and Light Trucks as described below.

Repair Code:	1165058300	Exhaust turbocharger (ATL) incorrect or no switching action
--------------	------------	---

Obtain the flat rate unit (FRU) allowances for the following that applies.

Labor Operation	Description	Labor Allowance
00 00 006	Carrying out vehicle test (Main work)	As applicable
Or:		
00 00 556	Carrying out vehicle test (Plusposition work)	As applicable
And:		
61 21 528	Supporting voltage of the vehicle electrical system / recharging vehicle battery	As applicable
And, as needed:		
61 00 006*	Carrying out vehicle diagnosis, ABL (Work time)	WT FRU
Or:		
00 58 500*	Diagnosis Worktime Flat Rate	2 FRU
And:		
11 65 520	Removing and installing/replacing exhaust turbocharger (Plusposition)	As applicable
And, if applicable:		
11 65 509	Additional work, initial filling after replacing turbocharger (Associated work)	As applicable

Sublet – Bulk Supply Materials (RO and Claim Comments Required)

Sublet Code 4	Reimbursement for the repair-related bulk supply materials (Do not use the BMW part numbers for claim submission)	See the sublet reimbursement calculations below
---------------	---	---

Sublet reimbursement calculation for claiming the applicable repair-related bulk supply material (BMW part number) is at the dealer net (DN) price for the full or proportional quantity used plus your center’s handling.

BMW Antifreeze/Coolant: Claim the corresponding sublet dollar amount for the quantity needed to replace what was drained. The one gallon concentrate part number quantity for a 50/50 coolant/water solution.

Enter this material cost in sublet and itemize the amount on the repair order and in claim comment section.

(*) Based on which one applies to your center, please refer to **SI B01 01 20** or **B01 07 20** for the applicable procedure for documenting, claiming, and explaining, on the RO and in the claim comments, your diagnosis work time (WT), job/repair work time (WT), and the vehicle repairs your center performed, unless otherwise required by State law.

BMW Group’s AIR Application Resource for Flat Rate Labor Operation Codes

To obtain the corresponding flat rate unit (FRU) allowance information from the BMW Group AIR application resource, start by entering the the Chassis Number (last seven (7) characters of the VIN) and click on the Copyright ©2024 BMW of North America, Inc.

“Search” icon. If the “Vehicle Selection” window displays two or more model possible vehicle choices, select the applicable Model, or enter the full VIN (17 characters) instead to proceed. Click on the “Flat Rate Units” button and enter a flat rate labor operation code number “without spaces” in the field to the right, click on the “Search” icon to display the corresponding listing of “Flat rate unit group details” that are available and their corresponding FRU allowances.

FEEDBACK REGARDING THIS BULLETIN

Technical Feedback	To submit feedback for the technical topic of this bulletin: Submit your feedback in the rating box at the top of this bulletin
Warranty Feedback	To submit feedback for the CLAIMS section of this bulletin: Submit an IDS ticket to the Warranty Department, or use the chat available in the Warranty Documentation Portal
Parts Feedback	To submit feedback for the PARTS section of this bulletin: Submit an IDS ticket to the Parts Department

