



WORK INSTRUCTIONS

MODEL Z AIR TRAVEL TRAILER

ANTI-SIPHON VALVE INSTALLATION

WI:	WI-004-2024 Anti-Siphon Valve Installation REV-A		
PRODUCT:	Model Z AIR Travel Trailer		
DATE:	October 11, 2024	LABOR RATE:	0.0 hours

Applies to:

This document refers to installation of anti-siphon valves on Brinkley Model Z AIR Travel Trailers manufactured between VIN's: 000001- 000618.

Condition:

Brinkley RV has determined that under certain conditions, a siphon condition can occur in the fresh water holding tank plumbing, causing a loss of fresh water. Brinkley RV will, at no charge to the customer, provide anti-siphon valves to address the concern.

Safety:

Safety is, and should always be observed when performing any type of repair. ANSI (American National Standards Institute) has created a standardized labeling system for different levels of safety and danger. The label below provide information regarding those levels of danger, and should be observed and adhered to at all times.

⚠ CAUTION

The "CAUTION" symbol above is a sign that a procedure has a safety risk involved and may cause personal injury, product and/or property damage if not performed safely and within the parameters set forth in this document.

PARTS INFORMATION

Model Z AIR Anti-Siphon Kit # K113791

PART #	Description	Qty
113700	ANTI-SIPHON VALVE	2
113789	INSTRUCTION LABEL 3.25 X 3	1
109801	WORK INSTRUCTIONS	1

⚠ CAUTION

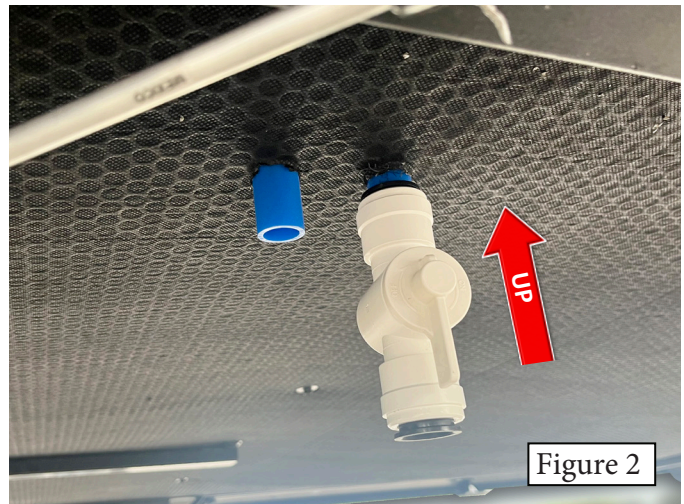
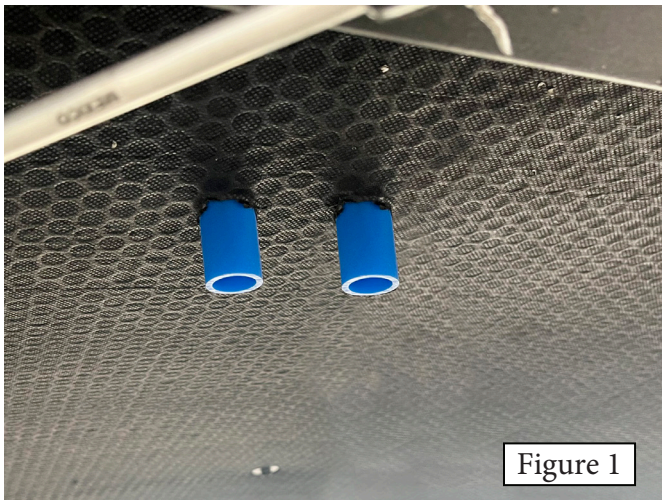
CAUTION: Always use caution when working under an RV. Be certain the RV is on relatively level ground, and the tires are properly blocked to prevent sudden or unexpected movement. Failure to do so may cause personal injury, product and/or property damage.

⚠ CAUTION

CAUTION: The Anti-Siphon valves **MUST** be in the “OPEN” position while filling or using the freshwater tank and **MUST** be in the “CLOSED” position **ONLY** when in transit with water in the freshwater tank. Failure to open the valves when filling or using the freshwater tank can damage the tank and / or associated plumbing by preventing proper venting as the freshwater tank fills or drains, as well as formation of mold and stagnation.

WORK INSTRUCTIONS:

1. **READ AND UNDERSTAND ALL INSTRUCTIONS PRIOR TO BEGINNING WORK.**
2. **Locate the fresh water holding tank vent tubes, located under the trailer close to the axles (Figure 1).**
3. **Prep the anti-siphon valves for installation by inserting the black PEX collar into the valves (not shown). Refer to the manufacturers instructions for assembly (included in the parts bag).**
4. **Install the first anti-siphon valve by pressing it upward onto one of the exposed tubes. There should be 1” of tubing inserted into the valve. (Figure 2). NOTE: In the event that the valves need to be removed, press up on the body of the valve while pressing the black flange down to release the locking mechanism, allowing the assembly to be removed.**



5. Install the second valve in the same manner. Be certain the operating lever on each valve is positioned so as not to interfere with the other valve when rotated (Figure 3).
6. Test valves for proper operation (not shown).

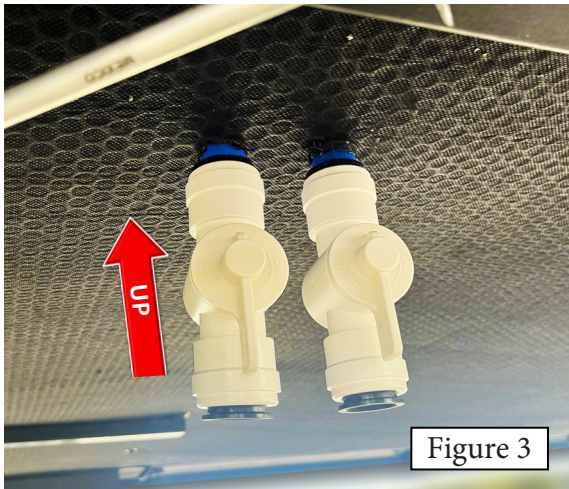


Figure 3

7. Install the CAUTION label in the utility compartment, below the Convenience Center, beside the winterizing label (Figure 4).
8. Installation complete.

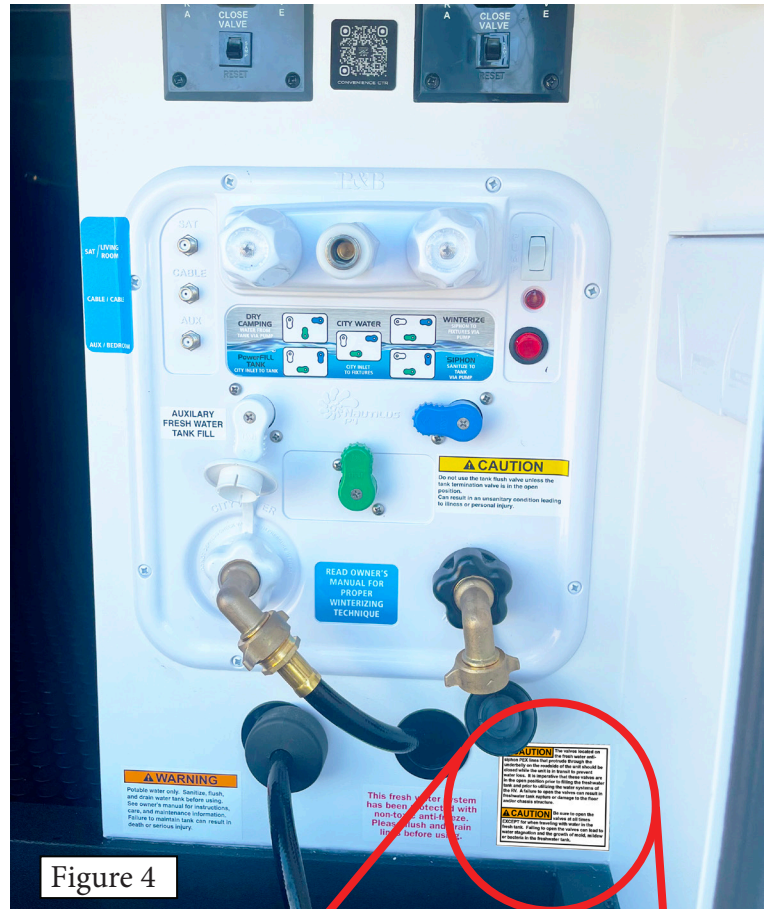


Figure 4

