



Technical Service Bulletin

SUBJECT:		No:	TSB-24-54-006
DRIVER SIDE DOOR MIRROR DOES NOT OPEN/ CLOSE ON VEHICLES EQUIPPED WITH AUTOMATIC DRIVE POSITIONER SYSTEM		DATE:	September 2024
		MODEL:	Outlander/Outlander Plug-in Hybrid
CIRCULATE TO:	<input type="checkbox"/> GENERAL MANAGER	<input checked="" type="checkbox"/> PARTS MANAGER	<input checked="" type="checkbox"/> TECHNICIAN
<input checked="" type="checkbox"/> SERVICE ADVISOR	<input checked="" type="checkbox"/> SERVICE MANAGER	<input checked="" type="checkbox"/> WARRANTY PROCESSOR	<input checked="" type="checkbox"/> SALES MANAGER

PURPOSE

The driver side door mirror does not open/close on Outlander and Outlander Plug-in Hybrid vehicles equipped with automatic drive positioner system. This occurs when the driver side Power Window Main Switch fails to receive a signal from the BCM (Body Control Module), causing the software process to stop.

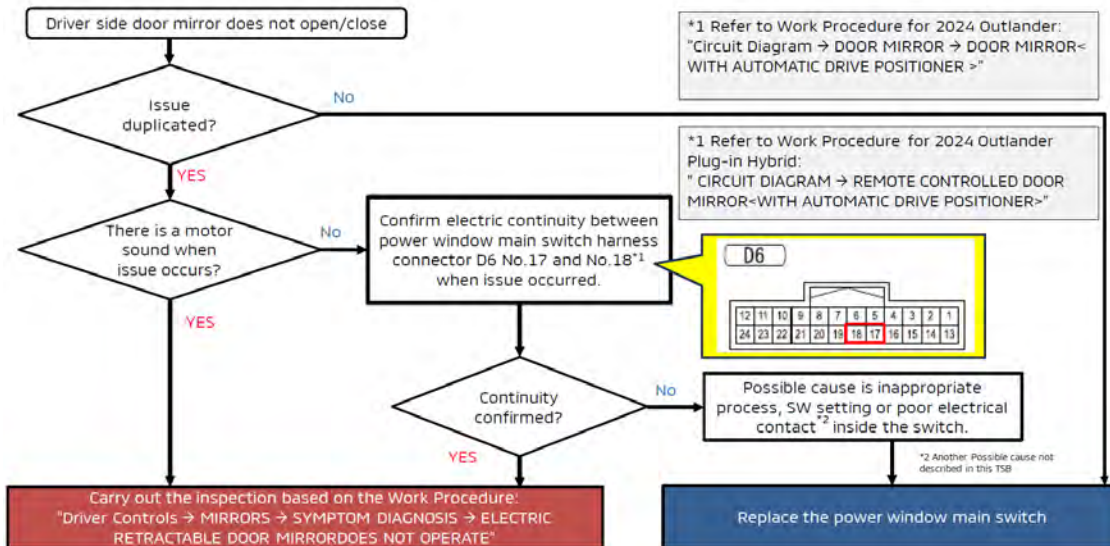
Upon customer complaint and confirmation of the concern, please inspect and if necessary, replace the Power Window Main Switch.

AFFECTED VEHICLES

2022-2024 Outlander & 2023-2024 Outlander Plug-in Hybrid
(Cut-off VIN/Date: JA4J3WA81RZ023180 - 10/9/2023)

WORK PROCEDURE

INSPECTION FLOW CHART



PARTS

Model	Part Name	Part Number	Quantity
Outlander / Outlander Plug-in Hybrid	SWITCH,P / W MAIN	8608A608	1

Copyright 2024, Mitsubishi Motors North America, Inc.

The information contained in this bulletin is subject to change. For the latest version of this document, go to the Mitsubishi Dealer Link, MEDIC, or the Mitsubishi Service Information website (www.mitsubishitechinfo.com).

REMOVAL AND INSTALLATION

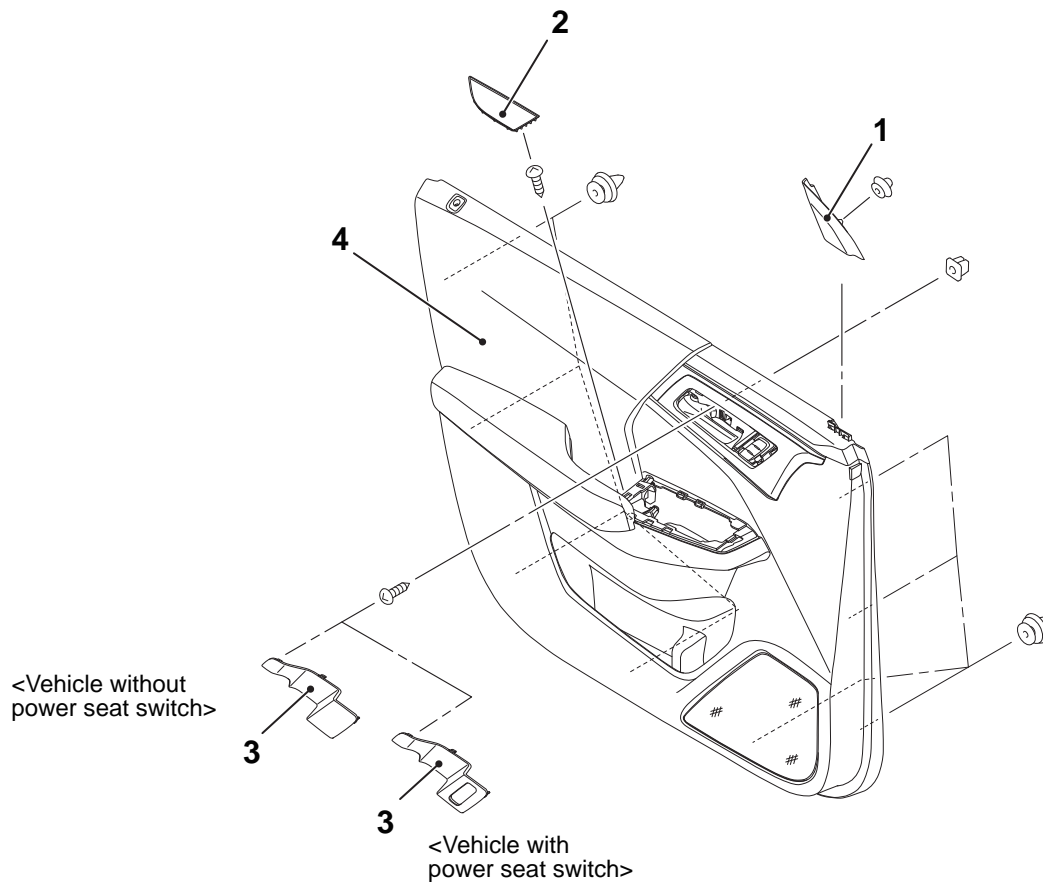
DOOR FINISHER

REMOVAL AND INSTALLATION

<Front door>

Post-installation Operation

Door Inside Handle Check (Refer to [DOOR INSIDE HANDLE CHECK](#)).



DF2002LGAB

Removal steps

1. Door corner cover
2. Front door pocket cushion
3. Pull handle cap
4. Front door finisher assembly

<<A>> >>A<<

Required Special Tool:

- MB990784: Ornament Remover

REMOVAL AND INSTALLATION

POWER WINDOW MAIN SWITCH

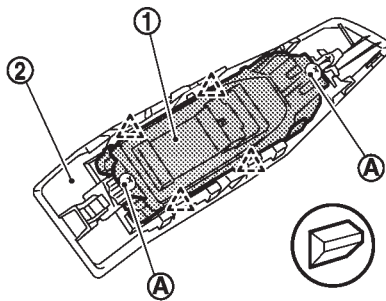
Removal and Installation

CAUTION:

Never bend the fixing pawl of power window switch finisher.

REMOVAL

1. Remove power window switch finisher. Refer to [REMOVAL AND INSTALLATION](#).
2. Remove power window main switch fixing screws (A), and then remove power window main switch (1) from power window switch finisher (2).



CF100BELAA00USA

: Pawl

INSTALLATION

Note the following, and then install in the reverse order of removal.

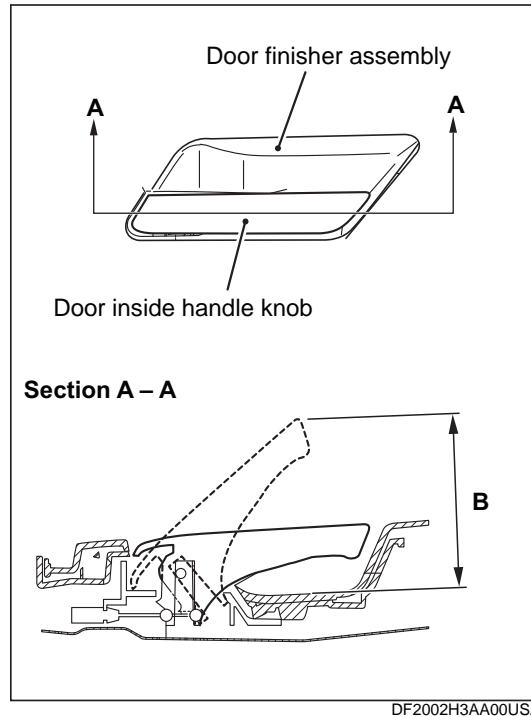
CAUTION:

When power window main switch in a vehicle with AUTOMATIC DRIVE POSITIONER is replaced, re-register mirror surface position information. Refer to [Work Procedure](#).



DOOR INSIDE HANDLE CHECK

DOOR INSIDE HANDLE KNOB PLAY CHECK

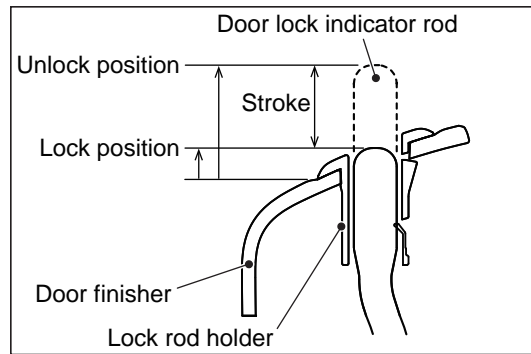


1. Check that the door inside handle knob play (stroke until the door latch unlocks) meets the standard value.

Standard value (B): 13.8 - 30.0 mm (0.55 - 1.18 inch) [Target value: 21.7 mm (0.85 inch)]

2. Check the door inside handle knob and door lock assembly. Replace them if the play is out of the standard value.

DOOR LOCK INDICATOR ROD STROKE CHECK



1. Measure the amount of protrusion from the door finisher at the lock position and the unlock position of the door lock indicator rod.

2. Check whether the difference between the amounts of protrusion (stroke) is within the standard value.

Standard value:

Front door: Approximately 12.3 mm (0.48 inch)

Rear door: Approximately 12.0 mm (0.47 inch)

3. If it is not within the standard value, check the door lock indicator rod, the door lock assembly and the door inside lock cable (rear only) and replace the defective parts.

PARTS INFORMATION

Model	Part Name	Part Number	Quantity
Outlander / Outlander Plug-in Hybrid	SWITCH,P / W MAIN	8608A608	1

WARRANTY

This bulletin is supplied as technical information only and is not an authorization to repair. If an affected vehicle is reported with the described condition, diagnose the condition, repair as described in this bulletin and submit a normal warranty claim using the information below.

Operation Code	Operation	Quantity	Labor Time (h)
428201TC	Replacement	1	0.5