



Technical Service Bulletin

| | | | |
|---|---|--|---|
| SUBJECT: CORRECTION TO REAR MOTOR REMOVAL & INSTALLATION PROCESS - SERVICE MANUAL REVISION | | | No: TSB-24-54-005 |
| | | | DATE: September 2024 |
| | | | MODEL: Outlander Plug-in Hybrid |
| CIRCULATE TO: | <input type="checkbox"/> GENERAL MANAGER | <input checked="" type="checkbox"/> PARTS MANAGER | <input checked="" type="checkbox"/> TECHNICIAN |
| <input checked="" type="checkbox"/> SERVICE ADVISOR | <input checked="" type="checkbox"/> SERVICE MANAGER | <input checked="" type="checkbox"/> WARRANTY PROCESSOR | <input checked="" type="checkbox"/> SALES MANAGER |

PURPOSE

This TSB provides corrections for Rear Motor removal and installation processes found in the Electric Power Train section within the applicable Service Manuals.

AFFECTED VEHICLES

2023-2025 Outlander Plug-in Hybrid

AFFECTED SERVICE MANUAL

2023-2025 Outlander Plug-in Hybrid Service Manual

PROCEDURE

Please use the chart below to replace the page in the affected Service Manuals: Electric Power Train, Electric Motor Control Unit (EMCU) and Motor (Electric Motor Unit) Rear, Removal and Installation sections.

| Applicable Manual | Pub. No. | Applicable Title | Content |
|--|----------------|--|------------------|
| 2023 OUTLANDER PLUG-IN HYBRID Service Manual | MSCD-027B-2023 | ELECTRIC POWER TRAIN └ ELECTRIC MOTOR CONTROL UNIT (EMCU) AND MOTOR (ELECTRIC MOTOR UNIT) | Attached sheet 2 |
| 2024 OUTLANDER PLUG-IN HYBRID Service Manual | MSCD-027B-2024 | └ MOTOR (ELECTRIC MOTOR UNIT)<REAR> └ REMOVAL AND INSTALLATION | |
| 2025 OUTLANDER PLUG-IN HYBRID Service Manual | MSCD-027B-2025 | | |



Copyright 2024, Mitsubishi Motors North America, Inc.

The information contained in this bulletin is subject to change. For the latest version of this document, go to the Mitsubishi Dealer Link, MEDIC, or the Mitsubishi Service Information website(www.mitsubishitechinfo.com).

ELECTRIC MOTOR CONTROL UNIT (EMCU) AND MOTOR (ELECTRIC MOTOR UNIT)

REMOVAL AND INSTALLATION

DANGER:

When servicing the high-voltage system parts, always wear the protective equipment or armour and always shut off the high-voltage by removing the service plug.

CAUTION:

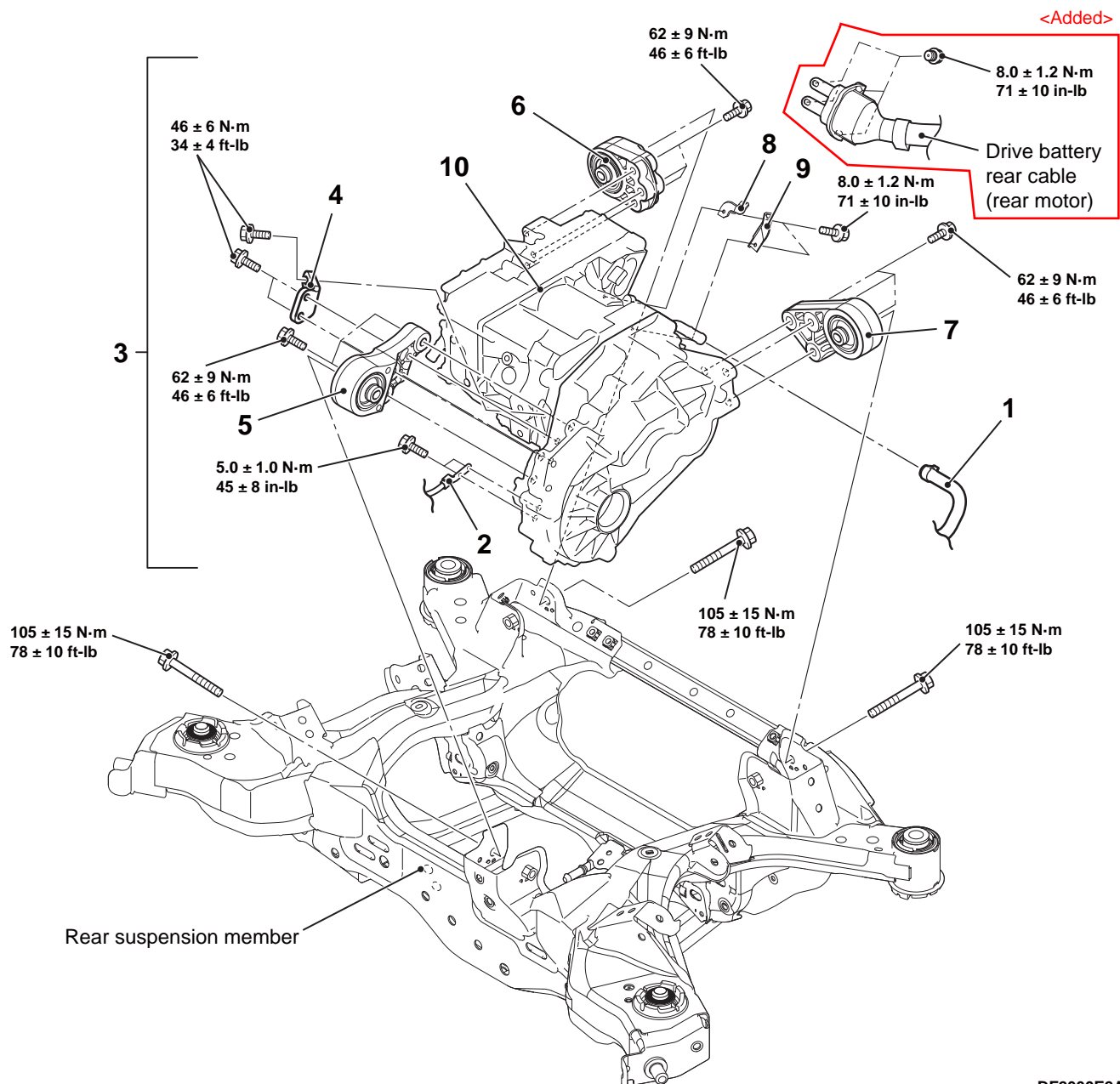
When the rear motor (with built-in REMCU) is replaced, perform the vehicle specification writing.

Pre-removal Operation

- EV coolant draining (Refer to EV COOLING SYSTEM - On-vehicle Service, Coolant Change).
- Rear transaxle fluid draining.
- Rear suspension member (Refer to REAR SUSPENSION - Rear Suspension Member).

Post-installation Operation

- Rear suspension member (Refer to REAR SUSPENSION - Rear Suspension Member).
- Rear transaxle fluid refilling.
- EV coolant draining (Refer to EV COOLING SYSTEM - On-vehicle Service, Coolant Change).



DF2000E2AA