

Parts Information

D698

13

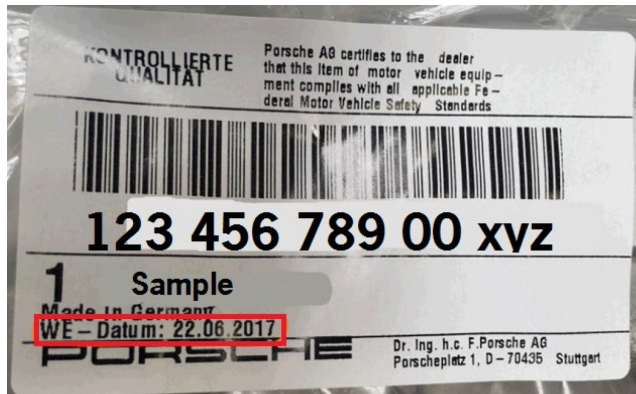
Parts Withdrawal - Windscreen

Replaces all previous bulletin bearing this number.

Attention: Porsche Parts Managers/Parts Personnel

Porsche Cars North America requests return of the following part(s) to PCNA if in stock at your Porsche Center:

Part Number	Description	Instructions
992845011Q	Windscreen	All parts before WE-Date 26.02.2024
992845011AN	Windscreen	All parts before WE-Date 26.02.2024
992845011S	Windscreen	All parts before WE-Date 26.02.2024
992845011AM	Windscreen	All parts before WE-Date 26.02.2024
992845011BL	Windscreen	All parts before WE-Date 26.02.2024
992845011DB	Windscreen	All parts before WE-Date 26.02.2024
992845047DY	Windscreen	All parts before WE-Date 26.02.2024
992845047FY	Windscreen	All parts before WE-Date 26.02.2024



To avoid restocking charges and receive full credit, follow these steps:

- Please enter a return in PPL by Friday, September 20, 2024.
- Please use **GR13D698** as a purchase order number.
- Parts returned to PCNA without a return delivery note will be sent back to the Porsche Center at Porsche Center's expense.
- Return requests received after the specified return date **will not be processed** and the parts will not be accepted for return. Parts will be coded non-returnable from that date on.
- These parts must be physically returned by close of business day on **Wednesday, September 25, 2024**, to your facing PDC.

Thank you for your cooperation in this matter.

Porsche Cars North America