

NFD Fill Plugs as of TODAY!!!

- Rear Rear axles: No change
- Forward Rear axles:
 - The reason is the need to reduce the lube level in the NFD Forward carriers due to lube cavitation leading to over heating in the fwd diff.
 - All carriers produced today for use in Aftermarket service repairs will be configured in the following manner.
 - There may be a need to adapt older units to the current production configuration
 - The current fill plug configuration that should come on all NFD carriers is:
 - FWD REAR diff has the fill plug on the side of the carrier housing ONLY.
 - REAR REAR carrier has the fill plug on the Axle Housing Bowl located on the rear bowl of axle housing.
 - Examples of locations on next slides

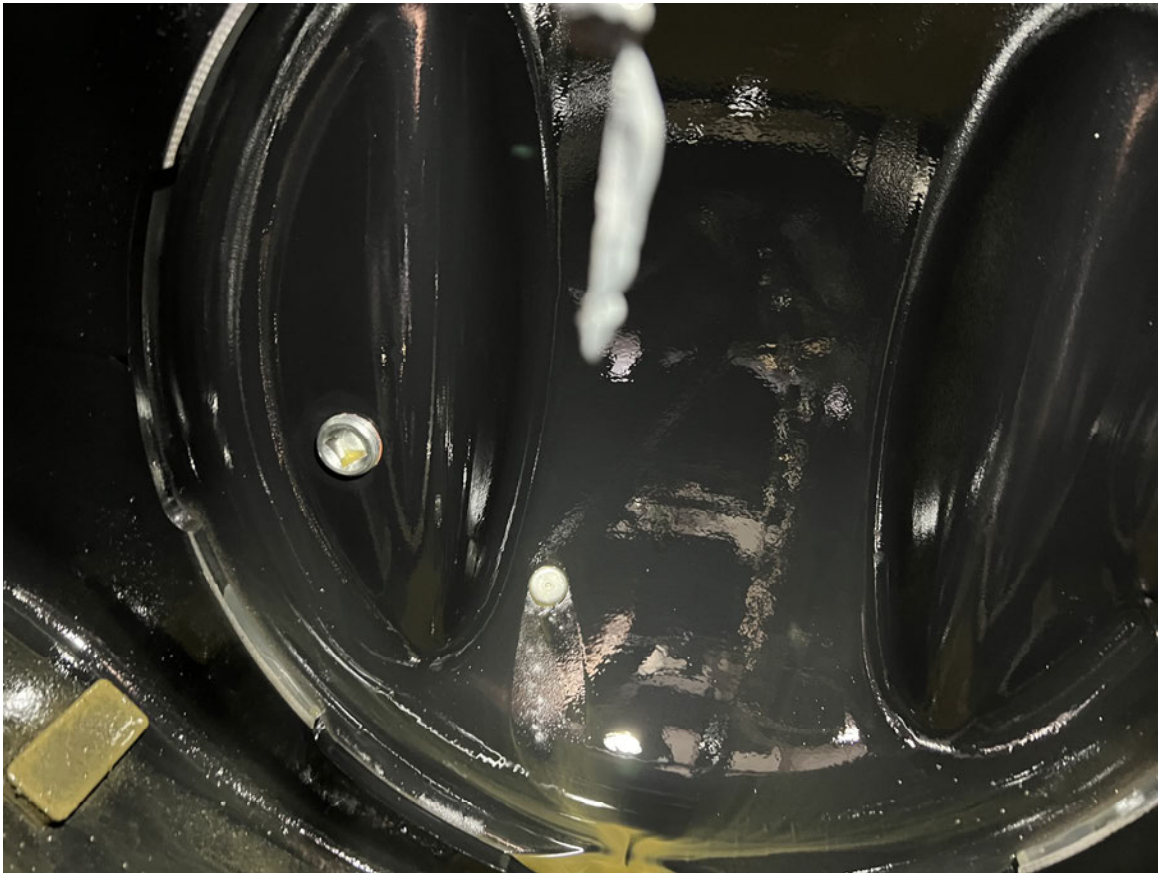


Publications related to axle fill plugs

- SB 35-032 – Aug. 2017
- SB 35-034 – Dec. 2018
- SB 35-038 – Jan. 2023
- SB 35-039 – Jan. 2023

- New publications are in process.
- **The primary message is:**
 - If the plug in the rear housing is installed from the inside out – Look for the plug in the front of the carrier. Depending on axle configuration it may be on the left or right side!
- We have received warranty claims from shops to remove the carrier and re-orient the plug on the housing.
 - This will cause the housing to be over full
 - Claims for this will not be paid

NFD Fwd Diff Correct Plug location Bowl area Internal and External



NFD Fwd Rear Lube fill location on Carrier Housing

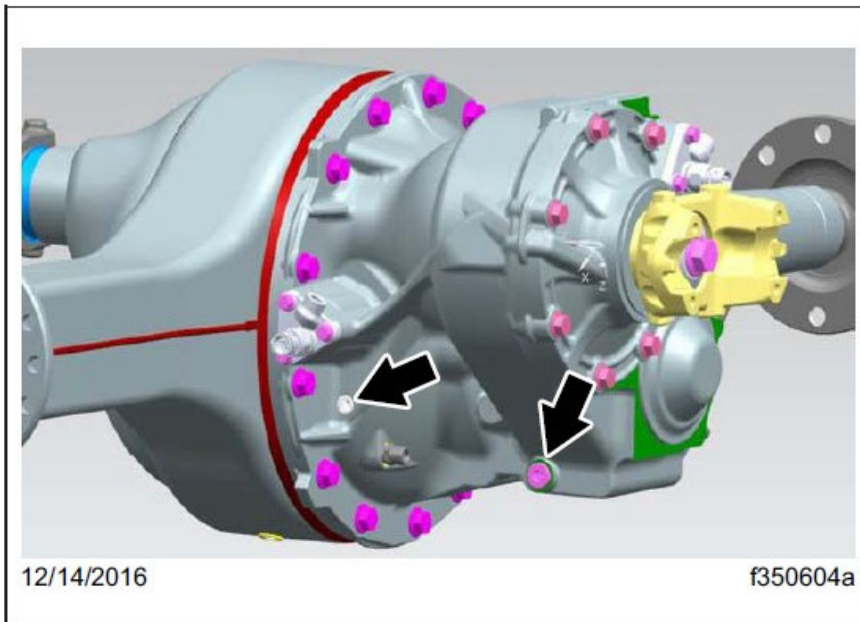


Fig. 4, New Fill Locations for New Final Drive with Passive Lube Management System

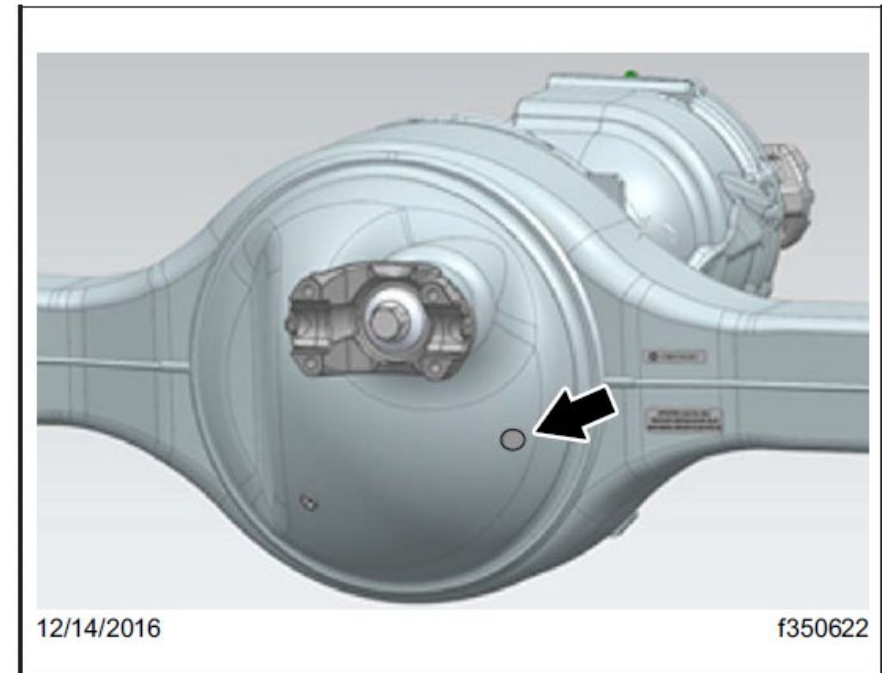


Fig. 5, Old Fill Plug Blocked with New Plug Inserted from Inside of the Carrier Housing

NFD Rear Rear Correct Fill Plug Location



-
- Fill plug has label with Lube type printed on it
 - Fill plug location is accessible on the outside of the axle housing bowl