

**Technical Service Bulletin (TSB)**  
**Exhaust Gas Temperature (EGT) Sensor Replacement**

<b>REFERENCE:</b>	<b>TSB:</b> 25-004-24 <b>GROUP:</b> 25 - Emission Control	<b>Date:</b>	September 25, 2024	<b>REVISION:</b>	—
<b>VEHICLES AFFECTED:</b>	<b>2023 (WL) Jeep Grand Cherokee / Grand Cherokee L</b> This bulletin applies to vehicles built on or after June 01, 2023 (MDH 0601XX) and on or before December 31, 2023 (MDH 1231XX) equipped with a 2.0L I4 DOHC DI Turbo Engine w/ ESS (Sales Code ECI) or a 2.0L I4 DOHC DI Turbo PHEV Engine (Sales Code ECX).	<b>MARKET APPLICABILITY:</b>			
		<input type="checkbox"/> NA <input type="checkbox"/> MEA <input type="checkbox"/> SA <input checked="" type="checkbox"/> IAP <input type="checkbox"/> EE <input type="checkbox"/> CH			
<b>CUSTOMER SYMPTOM:</b>	<p>Customers must experience a Malfunction Indicator Lamp (MIL) illumination and the vehicle must exhibit/set the following Diagnostic Trouble Code (DTC):</p> <ul style="list-style-type: none"> <li>• P1E7C - Catalyst Temperature Sensor Module "A" Performance.</li> </ul> <p>Customers may experience the following:</p> <ul style="list-style-type: none"> <li>• Poor fuel economy.</li> </ul>				
<b>CAUSE:</b>	Manufacturing design change				

This Technical Service Bulletin (TSB) has also been released as a Rapid Service Update (RSU) 24-132, date of issue September 25, 2024. All applicable RSU VINs have been loaded. To verify this RSU service action is applicable to the vehicle, use VIP or perform a VIN search in DealerCONNECT/Service Library. All repairs are reimbursable within the provisions of warranty.

**REPAIR SUMMARY:**

This bulletin involves inspecting the EGT sensor date code and replacing it as needed.

**CLAIMS DATA:**

Labor Operation No:	Labor Description	Skill Category	Labor Time
25-06-07-90	Sensor, Exhaust Gas Temperature (EGT) Sensor - Inspect (0 - Introduction)	1 - Engine Repair and Performance	0.2 Hrs.
25-06-07-91	Sensor, Exhaust Gas Temperature (EGT) Sensor - Inspect and Replace (0 - Introduction)	1 - Engine Repair and Performance	0.7 Hrs.
Failure Code	ZZ	Service Action	

**SPARE PARTS:**

Qty	Part No.	Description	Notes
1 (AR)	68446345AD	Sensor, Exhaust Gas Temperature	

**DIAGNOSIS:**

Using a Scan Tool (wiTECH) with the appropriate Diagnostic Procedures available in DealerCONNECT/ Service Library, verify all related systems are functioning as designed. If DTCs or symptom conditions, other than the ones listed above are present, record the issues on the repair order and repair as necessary before proceeding further with this bulletin.

If a customer's VIN is listed in VIP or your RSU VIN list, perform the repair. If any vehicle not on the VIN list exhibits any of the symptom listed above in the customer symptom section, perform the Repair Procedure.

**SPECIAL TOOLS/EQUIPMENT:**

Description	Ref. No.	Notes
wiTECH or Equivalent	–	–

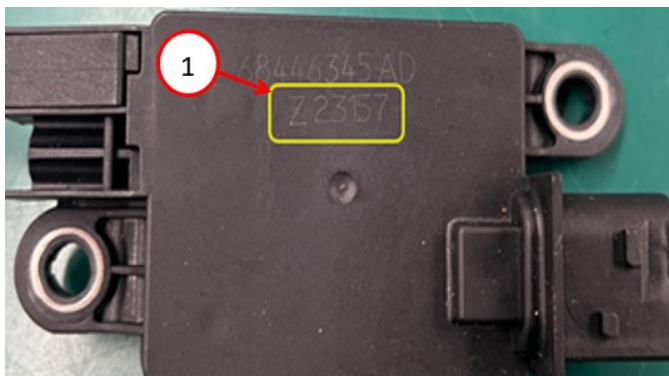
**REPAIR PROCEDURE:**

- Is the vehicle on the RSU VIN list?
  - YES>>> Proceed to [Step 2](#).
  - NO>>> This bulletin does not apply.
- Locate the EGT sensor [Fig. 1](#).



**Fig. 1**  
EGT Sensor Location

3. Locate the date code on the EGT sensor [Fig. 2](#).



**Fig. 2**  
Date Code Location

1 - Date Code Location

4. Is the date code at or between Z23109 and Z23233?
  - YES>>> Proceed to [Step 5](#).
  - NO>>> This bulletin has been completed. Use Inspect LOP (25-06-07-90) to close the active RSU.
5. Replace the EGT sensor. Refer to the detailed service procedures available in DealerCONNECT/Service Library under: Service Info> 09 - Engine, 2.0L / Engine Sensors / Removal and Installation / EGT Sensor.

**NOTE: Confirm that new part date code is not between Z23109 and Z23233 before installing.**

**POLICY:**

Reimbursable within the provisions of the warranty.

*This bulletin is supplied as technical information only and is not an authorization for repair. No part of this publication may be reproduced, stored in a retrieval system, or transmitted, in any form or by any means, electronic, mechanical, photocopying, or otherwise, without written permission of FCA US LLC.*