

 **HYUNDAI**
Technical Service Bulletin

GROUP CAMPAIGN	NUMBER 24-01-064H-1
DATE SEPTEMBER 2024	MODEL(S) IONIQ 5 N (NE N EV)

SUBJECT: IEB SOFTWARE UPDATE FOR ELECTRONIC BRAKE
FORCE DISTRIBUTION (EBD) OPERATION
(SERVICE CAMPAIGN 9B7)

This bulletin supersedes TSB 24-01-064H to include ROM ID 1.03 in the ROM ID Information table.

★ IMPORTANT

Dealers must perform this service campaign on all affected vehicles prior to customer retail delivery and whenever an affected vehicle is in the shop for any maintenance or repair.

Access the “Vehicle Information” screen via WebDCS to identify open campaigns.

Description: Certain 2025MY IONIQ 5 N (NE N EV) vehicles’ Integrated Electronic Booster (IEB) software logic may disable the operation of the Electronic Brake Force Distribution (EBD) system when there is a malfunction with the steering angle, yaw sensor or lateral acceleration sensor and illuminate the ESC warning lamp in the instrument cluster, instead of the ABS and BRAKE warning lamps. Follow the procedures in this bulletin to update the IEB software to enable EBD operation when there is a malfunction with those sensors and display the ABS and BRAKE warning lamps.

Applicable Vehicles (Certain):

- 2025MY IONIQ 5 N (NE N EV) produced 12/18/2023 – 4/18/2024

NOTICE

To avoid any potential damage to IONIQ vehicles, this service campaign can only be performed at IONIQ certified dealers.

SUBJECT: IEB SOFTWARE UPDATE FOR IMPROVED ELECTRONIC BRAKE FORCE DISTRIBUTION (EBD) OPERATION (SERVICE CAMPAIGN 9B7)

GDS Information:

System Selection: ABSESC | Brake

System	Event #	Description
ABS/ESC	1114	NE N IMPROVEMENT OF EBD NON-OPERATION ISSUES DUE TO NE N IEB S/W ERRORS

(*or use a later available event as listed in the GDS ABS/ESC Update screen if one is available.)

NOTE: This software update is subject to an OTA (Over-the-Air) option and may also be completed by customers with active Blue Link subscriptions.

Warranty Information:

Model	Op. Code	Operation	Op. Time	Casual Part	Nature Code	Cause Code
IONIQ 5 N (NE N EV)	40D099R0	Integrated Electronic Booster (IEB) Software Update	0.3 M/H	58520-NI000	I14	ZZ3

NOTE 1: Submit claim on Claim Entry Screen as “Campaign” type.

NOTE 2: If a part is found in need of replacement while performing this campaign and the affected part is still under warranty, submit a separate claim using the same repair order. If the affected part is out of warranty, submit a Prior Approval request for goodwill consideration prior to performing the work.

NOTE 3: Op times include VIN, Mileage, and photo capture of the “ECU update complete” screen as outlined in the Digital Documentation Policy.

ROM ID Information: Event #1114

Model	System	ECU Part Number	ROM ID	
			Old	New
IONIQ 5 N (NE N EV)	IEB	58520-NI000	1.00	1.04
			1.01	
			1.02	
			1.03	

Service Procedure:

STUI



This TSB includes Repair validation photos. Refer to the latest Warranty Digital Documentation Policy for requirements.

NOTICE

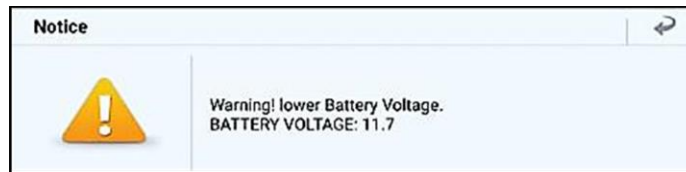
You must initially perform the GDS ECU update in Auto Mode.

- If the ECU update starts but then fails in Auto Mode, perform the update in Manual Mode to recover.

NOTICE

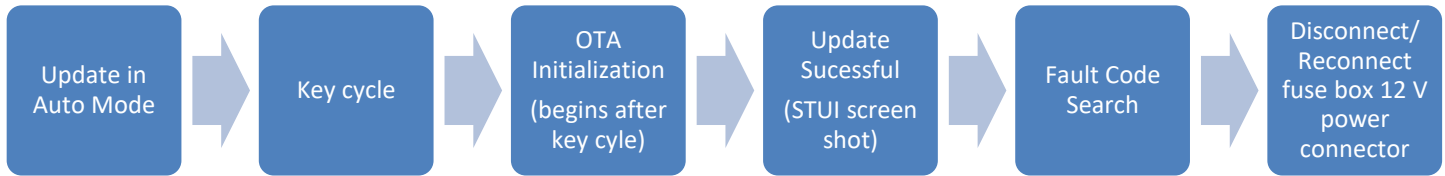
GDS Vehicle Battery Low Voltage Warning:

If voltage is below 12 Volts per the GDS warning, then select **Back** and attach a battery charger to ensure an adequate battery charge for reliable update results. Turn ignition back **ON**, and then retry the ECU update again.



SUBJECT: IEB SOFTWARE UPDATE FOR IMPROVED ELECTRONIC BRAKE FORCE DISTRIBUTION (EBD) OPERATION (SERVICE CAMPAIGN 9B7)

ECU Update Procedure

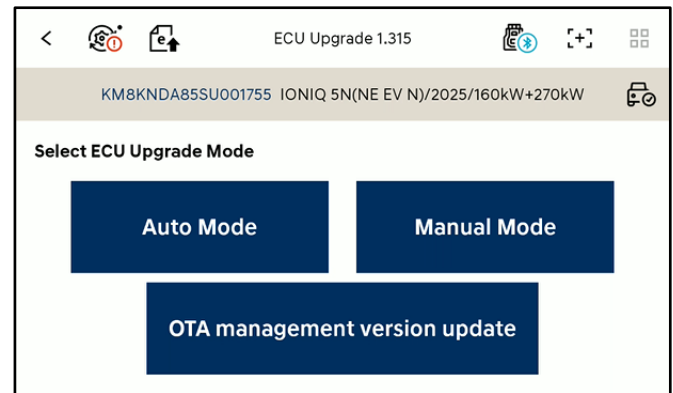


1. Perform the ECU update in **Auto Mode**.

Use the **ID Check** to verify the ROM ID before updating the software.

i Information

Refer to **TSB 24-GI-012H**, “**ECU Update Procedure for Tablet-Based GDS-Smart**”, for additional information.



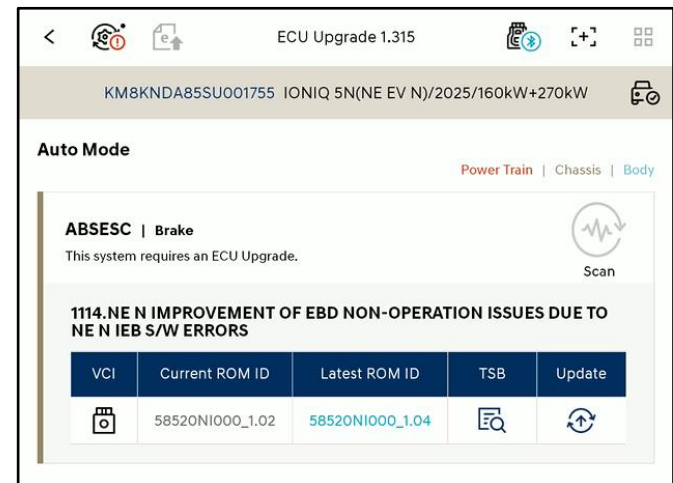
2. Select the **ABS/ECU** system to scan the vehicle’s current ROM ID.

NOTICE

Check the current ROM ID version and compare it to the ROM ID Information table before attempting to perform the software update.

NOTICE

If the upgrade fails, please remove the power connector or the battery (-) connector from the indoor fuse box for at least 5 seconds and reassemble it to retry the upgrade.



SUBJECT: IEB SOFTWARE UPDATE FOR IMPROVED ELECTRONIC BRAKE FORCE DISTRIBUTION (EBD) OPERATION (SERVICE CAMPAIGN 9B7)

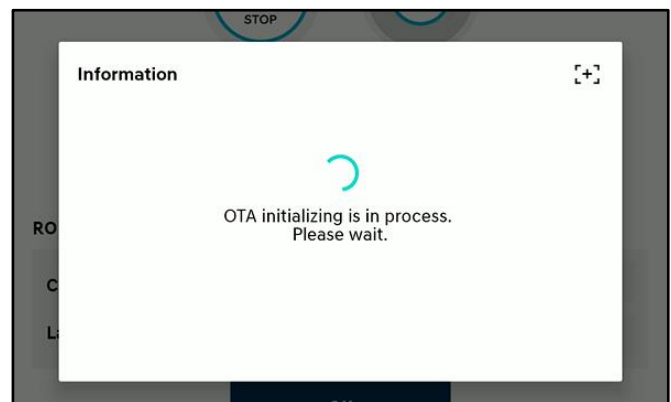
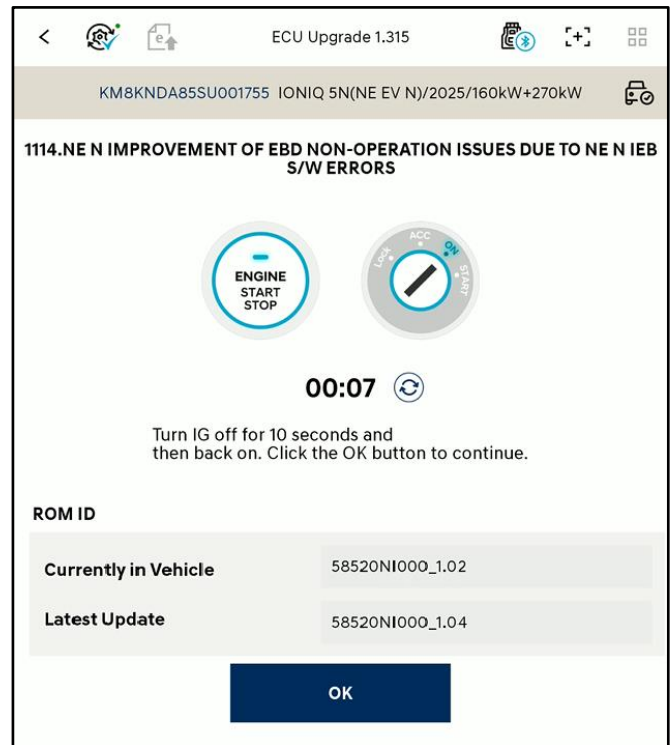
3. After the ECU update process shows 100% complete, follow the prompts on the screen to cycle the ignition **OFF** for at least 10 seconds to reset the control unit (certain models may take up to 30 seconds).

i Information

Use the **Refresh** button to reset the timer.


After clicking **OK** the OTA Initialization process will begin.

- If OTA initialization performs automatically. Then proceed with the service procedure.
- If the OTA initialization fails, connect GDS-Smart → S/W Management → Central Communication Unit (CCNF) → OTA Initialization
Follow the instructions on the screen.



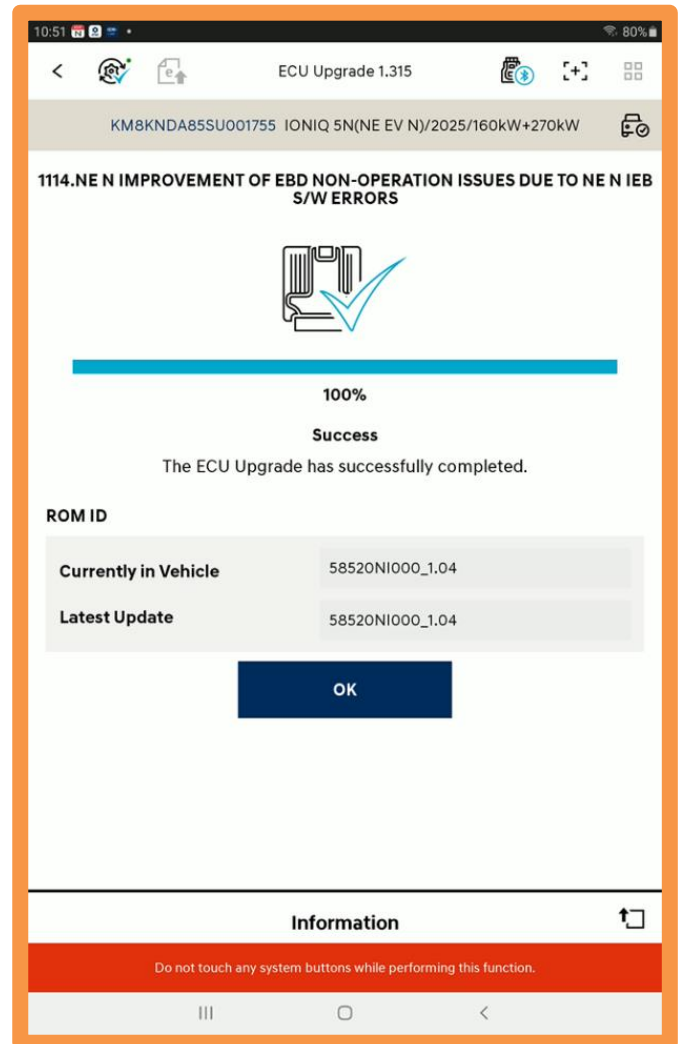
SUBJECT: IEB SOFTWARE UPDATE FOR IMPROVED ELECTRONIC BRAKE FORCE DISTRIBUTION (EBD) OPERATION (SERVICE CAMPAIGN 9B7)

4. After the OTA Initialization process, take a screenshot of the update completed screen.

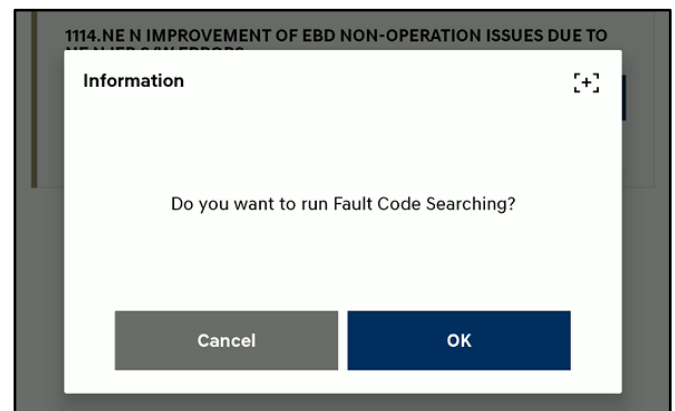
STUI 

Take a screenshot of the ECU Update Complete screen using your tablet and upload to STUI.

Then click **OK**.



5. Perform the Fault Code Searching and erase DTC history that had incidentally occurred from the ECU update.



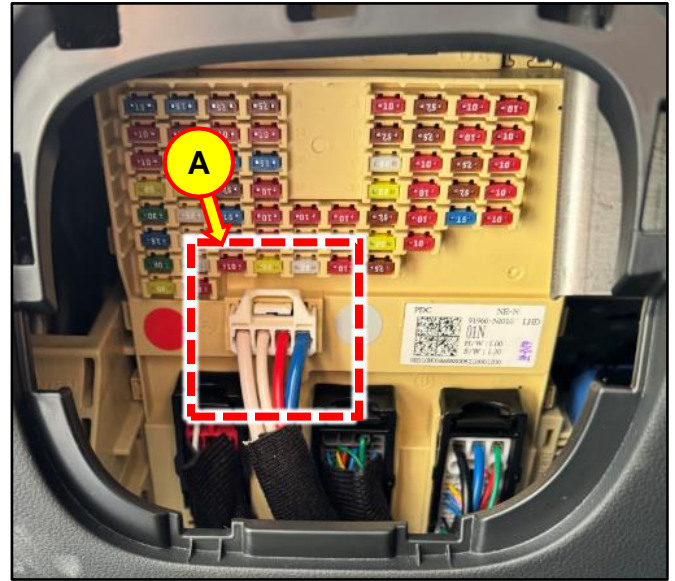
SUBJECT: IEB SOFTWARE UPDATE FOR IMPROVED ELECTRONIC BRAKE FORCE DISTRIBUTION (EBD) OPERATION (SERVICE CAMPAIGN 9B7)

6. Disconnect the power connector (A) of the indoor fuse box, wait at least 5 seconds, then reconnect it.



Information

As an alternative, you can disconnect the negative 12V battery terminal, wait 5 seconds, then reconnect it.



7. Place in **Ready** mode to confirm proper operation of the vehicle.

NOTICE

If the ECU update fails in Auto Mode, perform the update in Manual Mode using the password below.

Manual Mode Password: Event #1114

ECM Menu	Password
NE N IEB 58520-NI000	2558