

September 18, 2024

Version 1

Water Intrusion in the Rear Hatch Area

AFFECTED VEHICLES

Year	Model	Trim Level	VIN Range
2022–23	Civic Hatchback	ALL except Type R	ALL
2024	Civic Hatchback	ALL except Type R	19XFL1...RE000001 thru 19XFL1...RE029811
			19XFL2...RE000001 thru 19XFL2...RE040539

SYMPTOM

The customer may complain of water dripping from the bottom of the rear hatch interior trim area when opened, and/or evidence of water in the cargo area along the interior of the rear hatch.

POSSIBLE CAUSE

Water is not draining from the rear hatch.

CORRECTIVE ACTION

Install two drain plugs in the rear hatch.

PARTS INFORMATION

Part Name	Part Number	Quantity
Drain Plug	90856-TJB-A01	2

TOOL INFORMATION

Tool Name	Part Number	Quantity
5mm Drill Bit	Commercially available	1
Deburring tool	DEBUR300	1

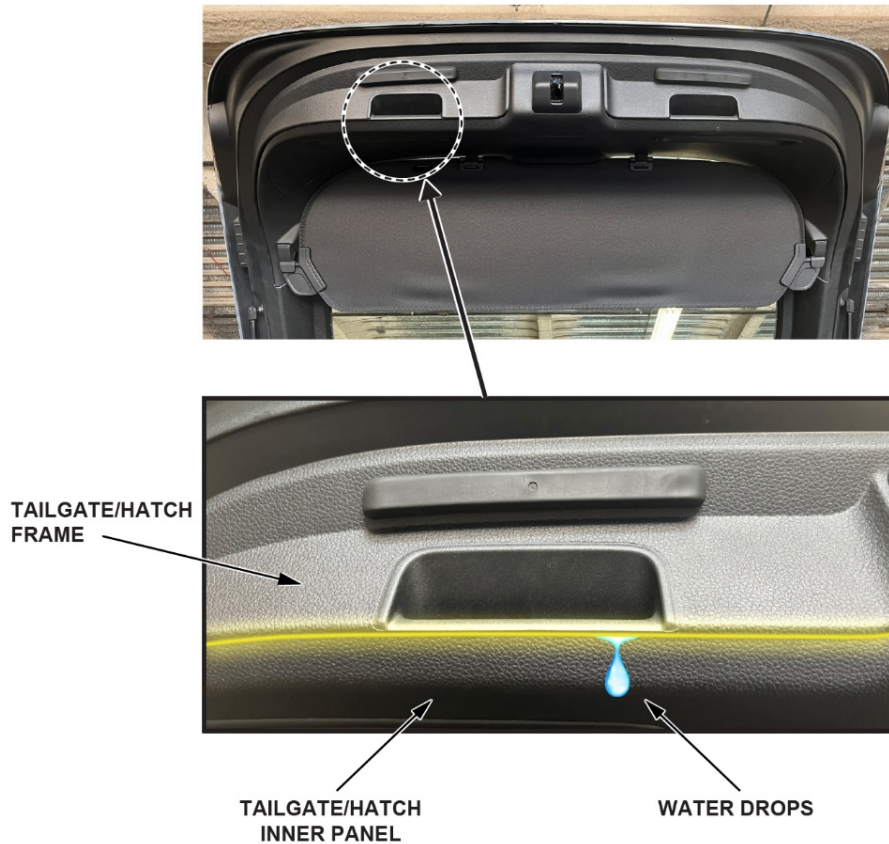
CUSTOMER INFORMATION: The information in this bulletin is intended for use only by skilled technicians who have the proper tools, equipment, and training to correctly and safely maintain your vehicle. These procedures should not be attempted by “do-it-yourselfers,” and you should not assume this bulletin applies to your vehicle, or that your vehicle has the condition described. To determine whether this information applies, contact an authorized Honda automobile dealer.

WARRANTY CLAIM INFORMATION

Operation Number	Description	Flat Rate Time	Defect Code	Symptom Code	Template ID	Failed Part Number
8575A4	Inspect rear hatch panel for evidence of water leak.	0.4 hr	07408	05908	A24110A	84431-T47-A01ZA
8570A9	Install two drain plugs in the rear hatch, (includes inspection).	0.6 hr	07408	05908	A24110B	84431-T47-A01ZA

INSPECTION PROCEDURE

1. Spray water on the roof and rear hatch area or run the vehicle through a car wash.
2. Open the rear hatch.
3. Examine the rear hatch inner panel for water droplets or evidence of water residue, then shake the rear hatch to detect any water noise from inside the rear hatch.



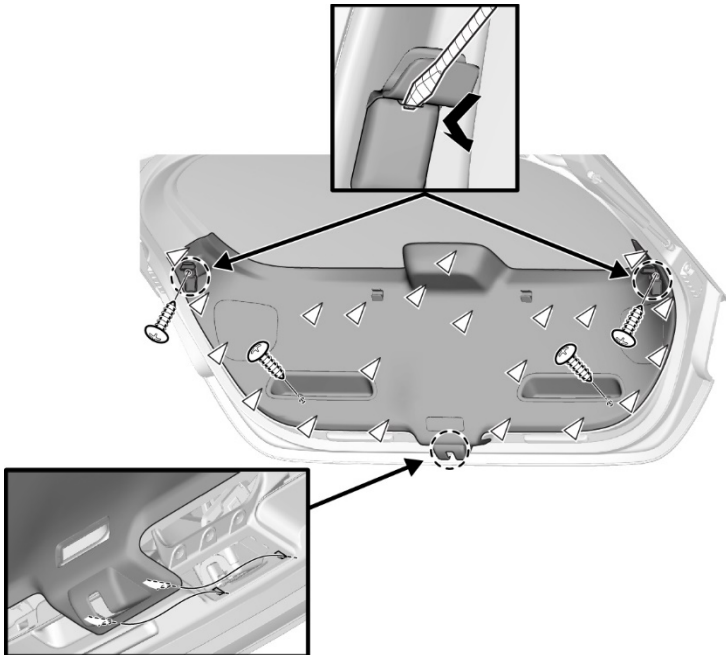
4. If the water leak is verified to be coming from the highlighted area of the rear hatch, proceed with the REPAIR PROCEDURE.
5. If there is no evidence the water leak is coming from the rear hatch, this bulletin does not apply. Proceed with normal troubleshooting.

REPAIR PROCEDURE

1. Open the rear hatch and locate the dimples in the panel on either side of the latch.

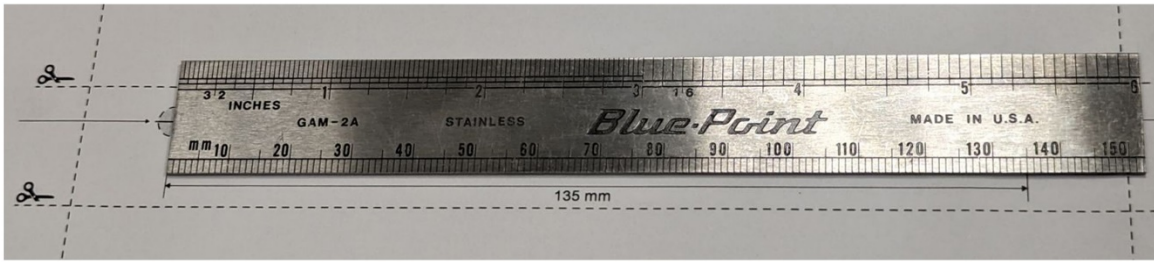


2. Remove the rear hatch interior trim panel.

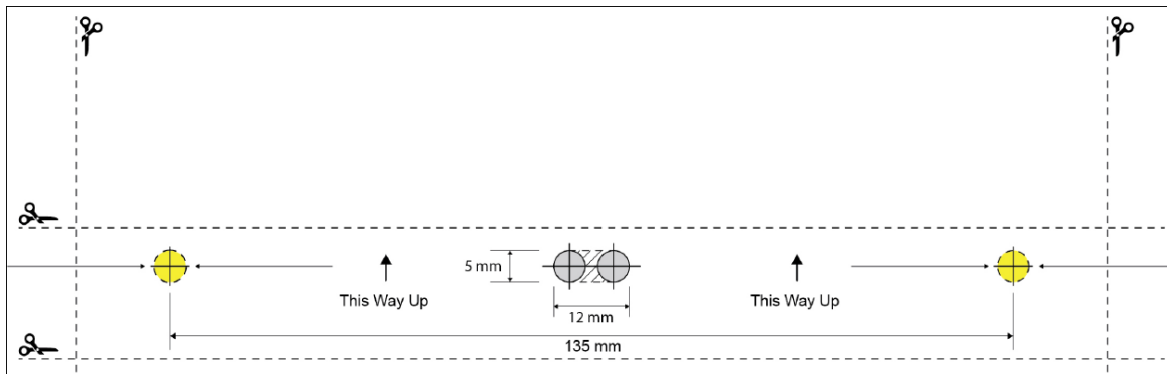


3. Print this service bulletin using the **Actual Size** print setting.

4. On the last page of the printed service bulletin, confirm the template size is accurate by verifying the measurement between the center of the two end holes is **135 mm (5.31 inches)**, as marked on the template.
- NOTE: If the measurement does not equal **135 mm (5.31 inches)**, check the print settings to confirm the **Actual Size** setting is selected.



5. Cut out the drilling templates, then cut out the end holes (marked in yellow) with a paper hole punch. There are two templates, one for each side of the rear hatch.



6. Line up the end holes in the template with the dimples in the rear hatch, and confirm the template arrows are pointing up, then secure the template with tape at each end.



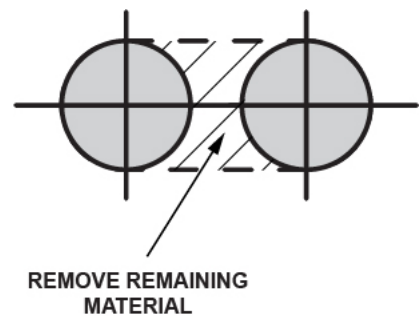
7. Using a centerpunch, mark the drilling locations on the ⊕ markings on the template.



8. Using a 5 mm drill bit, drill a hole at each of the marked locations.



9. Use a utility knife to remove the remaining material between the two drilled holes, matching the outline on the template.



10. Deburr the hole in preparation for the plug installation.

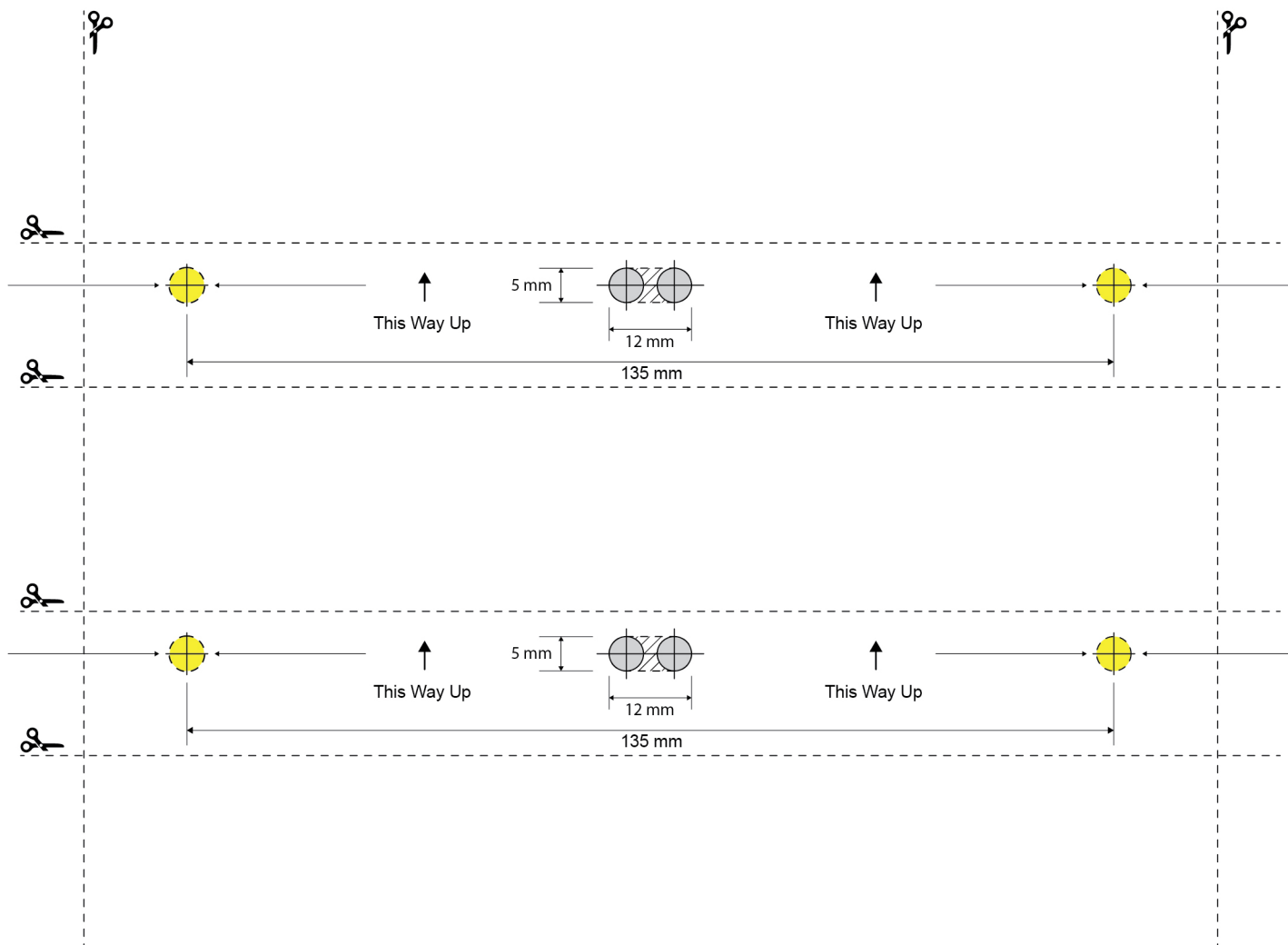
11. Vacuum up any loose debris.

12. Install the plug by pushing until it sits flush with the panel.



13. Repeat steps 5-12 for the second plug.

14. Install the rear hatch interior trim panel.



After printing, if the measurements do not match up, check your print settings to ensure that Actual Size is selected.