



**PROTERRA**



# TECHNICAL SERVICE BULLETIN

<b>ISSUE DATE:</b>	06/02/2023
<b>SERVICE BULLETIN SUBJECT:</b>	800V Cooling Hose Cap Retrofit
<b>VINs or MODELS AFFECTED:</b>	Service Specified Buses
<b>COMPLETE BY:</b>	Next Service Opportunity
<b>SERVICE BULLETIN #:</b>	SC-23-082
<b>LABOR OPERATION CODE:</b>	CC64Z

**NOTICE!** It is expected that this process will require 1 hour per bus. Please schedule appropriately to minimize vehicle downtime.

## 800V COOLANT HOSE CAP RETROFIT

### Retrofit Description:

This procedure adds improved caps to the coolant system.

## Tools/Parts Required

### Tools and Supplies Required:

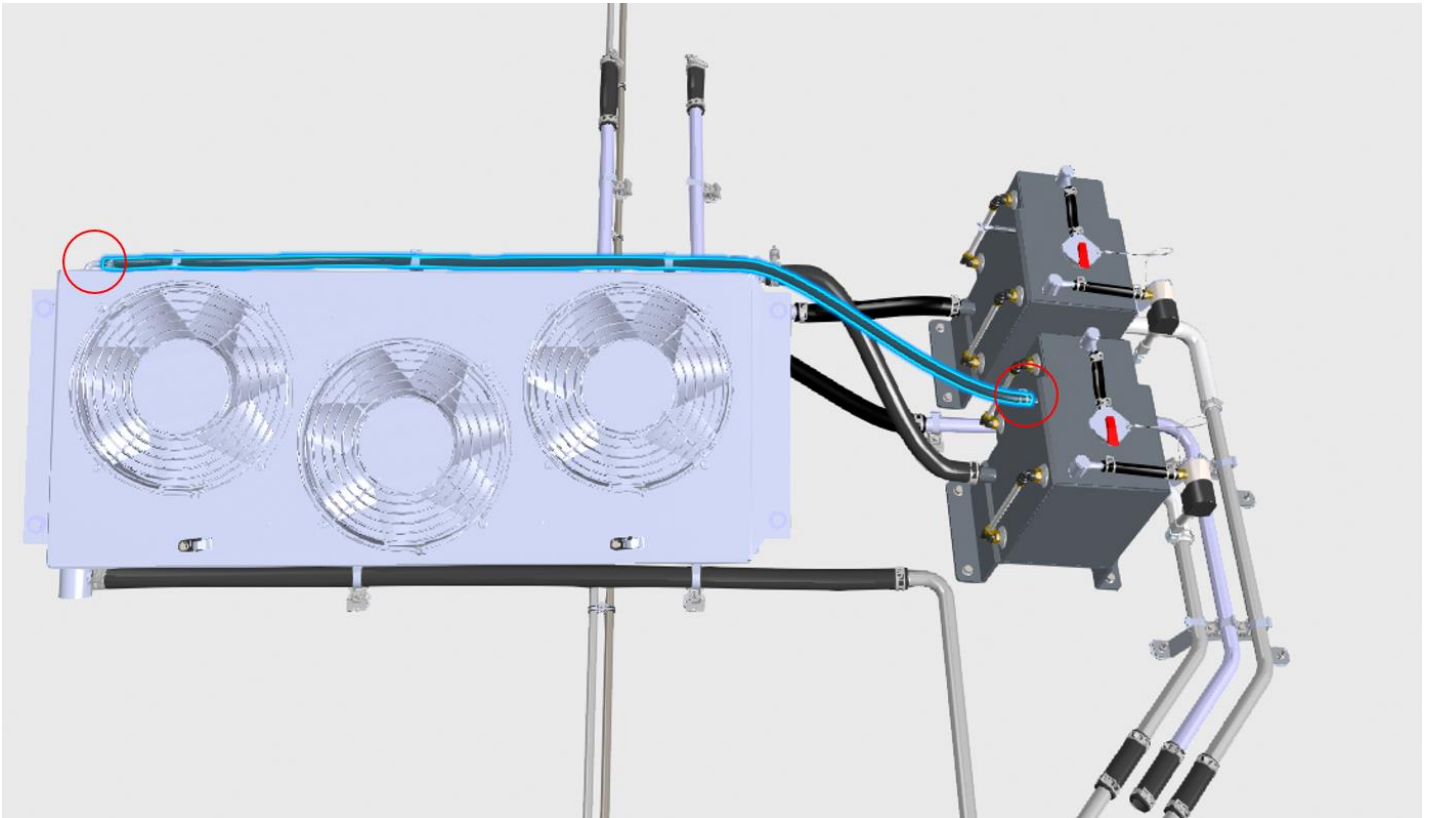
- 3/8-Inch Allen Driver
- 15/16-Inch Combination Wrench
- Slip Joint Pliers
- Spring Clamp Pliers
- Side Cutting Pliers
- PTFE Tape (Teflon)

### Kit Parts Required:

054448	KIT, RETROFIT, RADIATOR BLEED HOSE CAP (Consisting of)		
	001161	FITTING, BRASS, PLUG, SOCKET HEAD, 1/2 PT"	1 EA
	002996-002	CLAMP, WORM, 7/32 - 5/8" DIA"	2 EA
	017013	HOSE, COOLANT, EPDM. SAE J20R3 D2. 3/8 ID"	10 IN
	033407	FITTING, HOSE BARB, 1/2" NPTF X 3/8" HOSE	1 EA
	142-9214	PLUG, 5/16", THUMB NUT	1 EA
	012138	CABLE TIE, HEAVY DUTY .5WIDE 9.1" BLACK	1 EA

## Procedure

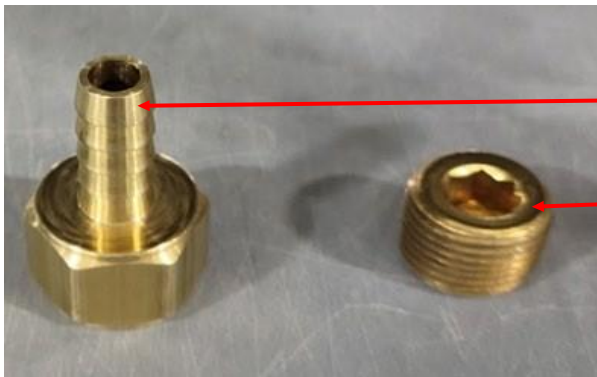
1. Perform the Proterra approved Lockout/Tagout procedure to make the bus safe for work.
2. Using the appropriate safety measures, access the coolant system on the rooftop of the bus.  
**Note:** It may be possible to reach the hose from the rooftop hatch, but all rooftop safety rules apply.
3. Observe the Coolant System on the top of the bus shown in the following photograph.  
A3/8Inch ID Hose may be installed in the location shown by the highlighted hose below.



4. If the Hose is still installed, remove it using Spring Clamp Pliers. Use Side Cutting Pliers, remove any Cable Ties that secured the Hose.
5. If the hose is not installed, remove the caps from the areas circled in red above.
6. Apply PTFE tape to the threads on the Fitting (001161).



- Using a 3/8-Inch Allen Driver and a 15/16-Inch Combination Wrench, install the Fitting (001161) into the Hose Barb (003407).



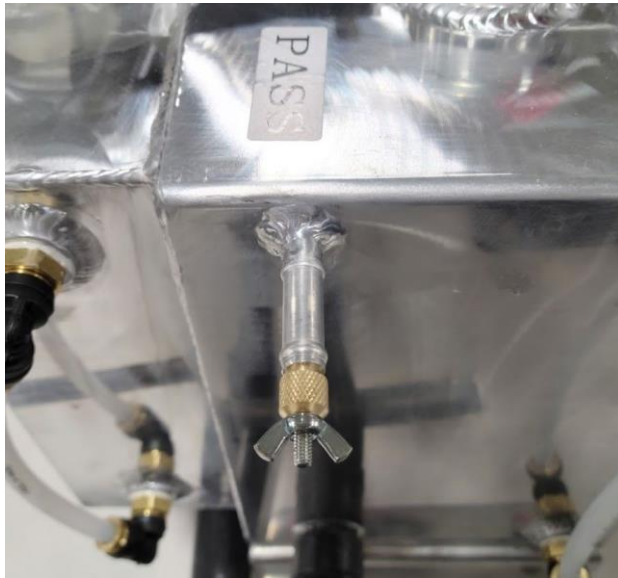
003407

001161

- Torque the Fittings 2 to 3 turns past finger tight.
- Install the Hose (017013) onto the radiator fitting as shown in the following photograph.



10. Secure the Hose (017013) to the Cable Tie Mount using a Cable Tie (012138).
11. Installed the assembled Fittings (003407 and 001161) into the end of the Hose (017013).
12. Secure the Hose (017013) on each end with a Worm Drive Clamp (002996-002).
13. Install the Expansion Plug (142-9214) into the Expansion Tank Hose Barb as shown in the following photograph.



14. Using Slip Joint Pliers, carefully tighten the Wing Nut on the Expansion Plug (142-9214).
15. Using Shop Towels, clean up any spilled coolant.
16. Remove the Lockout/Tagout devices and return the bus to service.