



TECHNICAL SERVICE BULLETIN

Subject	PECL Fitting Replacement 35' FT
Issue Date	07/19/2023
Service Bulletin Number	SC-23-090
Models Affected	Service Specified Vehicles
Complete By	Next Service Opportunity
Labor Operation Code	CC65Z

Description:

This Technical Service Bulletin covers the procedure for replacing the Power Electronic Coolant Loop quick connect fittings with more durable brass fittings.

Labor Table				
	Operation	Technicians	Hours	Labor Time (T x H)
1	Steps 1-4	1	.75	.75 Hours
		Total Labor Time:		.75 Hours

If there are questions about the procedure, please contact the Proterra Customer Service Team at the phone number or email provided.

864-438-0000
Service@Proterra.com



Parts Required:

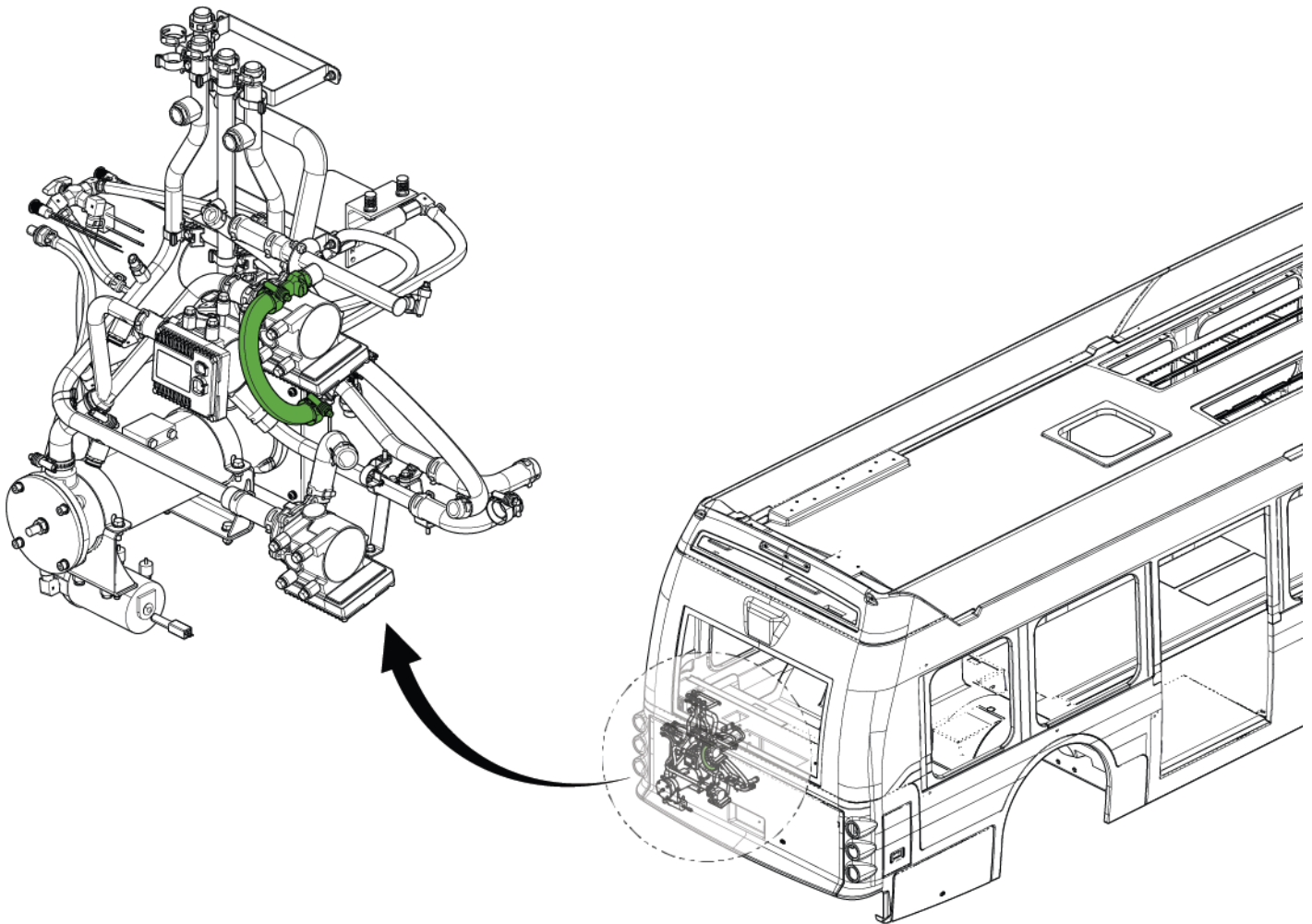
Item	Part Number	Description	Qty.	UOM
1	191-4501	FITTING, CHROME-PLATED BRASS, 1/2" MNPT X 3/8"	1	EA
2	191-4500	FITTING, BRASS, 3/4" BARB X 3/8" NPT MALE	1	EA
3	017650	TEFLON TAPE, HEAVY DUTY	N/A	N/A

Tools Required:

- M8 hex socket/driver
- 1-inch crescent wrench

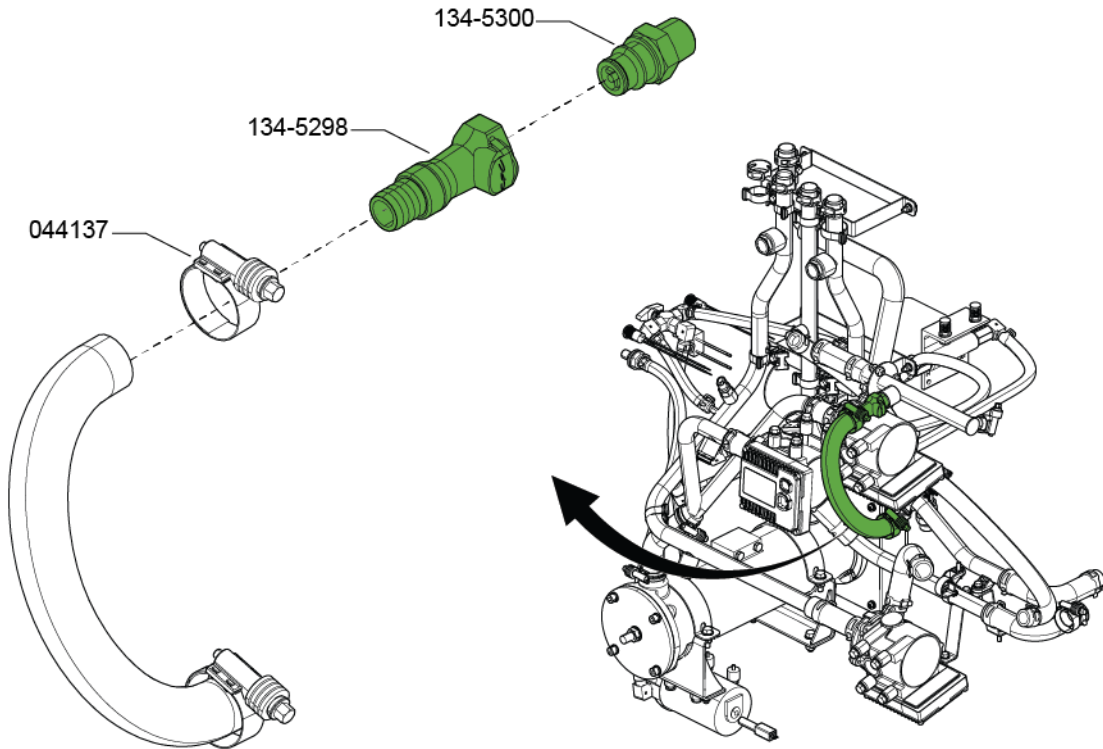
Step 1:

Open the trunk to access the cooling system components and drain the Power Electronic Coolant Loop (PECL).



Step 2:

Loosen the worm-drive clamp and remove the quick connect fittings (134-5298 and 134-5300).



Step 3:

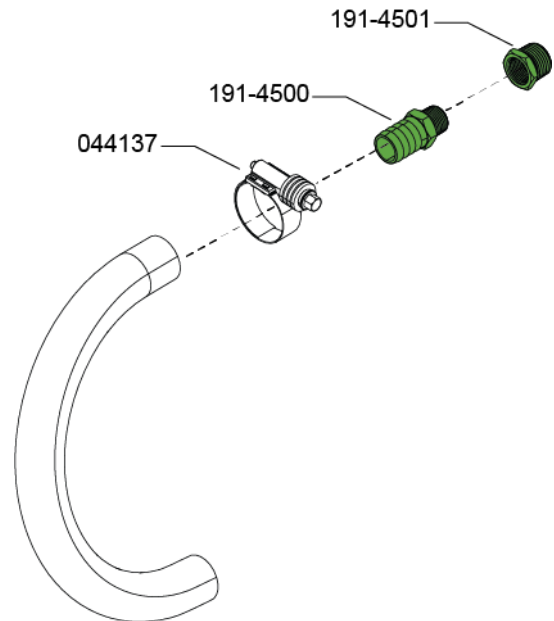
Wrap the threads of the new fittings (191-4500 and 191-4501) with Teflon tape and leave the last three threads exposed.

Install fitting 191-4501 into PECL hardline.

Thread fitting 191-4500 into 191-4501.

Attach hose and secure with worm-drive clamp.

Refill PECL.



Step 4:

The replacement procedure is now complete and the bus may be returned to service.