

MAS003433 RU 24-27

**RAPID UPDATE**

FROM: Maserati TSO

TO: Maserati Network



**Maserati**

PERSONAL SERVICE LAB

MASTERS OF CARE

# Rapid Update 576

## MC20 - Door striker reinforcement



DATE: September 4, 2024

Certain Maserati MC20 (M240) MY22 listed in MODISCS+ are involved in a Rapid Update concerning the reinforcement of the door strikers.

This intervention is necessary because a small number of cars require reinforcement of the component.

We remind you that all the Rapid Updates must be performed within the first workshop visit, regardless of the Mandatory setting set in Modis, as required by Maserati policies.

Also, for vehicles in Stock Dealer / PDI, it is necessary to carry out all action operations before delivery to the end customer, as required by the White Book and explicitly reported in the Pre-delivery checklist.

**Please read and review this bulletin first before ordering parts and/or starting the procedure.**

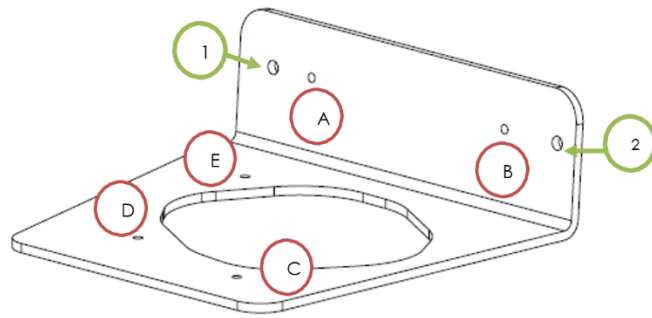
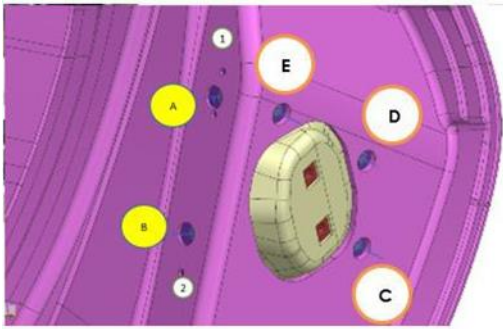
Contact your Regional AfterSales Manager (RAM) or the Technical Support Helpdesk if you have any questions.

Thank You for your continued support and cooperation.

Maserati North America  
Aftersales Dept.

# Overview

The rework consists of installing 5 rivets to reinforce the joint between the striker and the door.



1 and 2: Gasket reference holes to Center/align the template on the door

A - E: Holes to be made on the car for inserting rivets

## Tools Needed

- Diamond drill Ø 3 mm for pre-drilling
- Diamond drill Ø 4,9 mm for rivets
- Countersink chamfering/deburring tool with a cone angle of 90°, cone base diameter of 16mm
- Cutter with centered 10 mm diameter
- Template Guide to make the pre-holes (model available on Modis)
- (Safety) vacuum with a thin spout. For cleaning carbon fiber dust.
- (Safety) face mask. Do not breathe in carbon fiber dust.
- **#5 Stainless Steel rivets\* with round head 16 mm long for thicknesses 6.5-9.0 mm, black color**

INOX STAINLESS STEEL A-2		INOX STAINLESS STEEL A-2						TESTA TONDA DOME HEAD	
d	L			D	s			Codice Code	Note Notes
mm	mm	mm	mm	mm	mm	N	N		
	8	1,5-3,0						AW0384808	
	9,5	2,5-4,5						AW0384895	
4,8	12	5,0-6,5	4,90	9,50	1,80	4,400	4,000	AW0384812	
	16	6,5-9,0						AW0384816	
	20	9,0-12,0						AW0384820	

\*Example of rivets\* to be used. **The rivets must be sourced via 3<sup>rd</sup> party retail stores.**

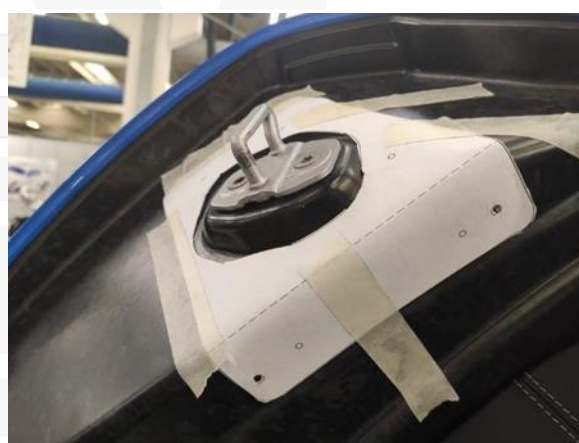
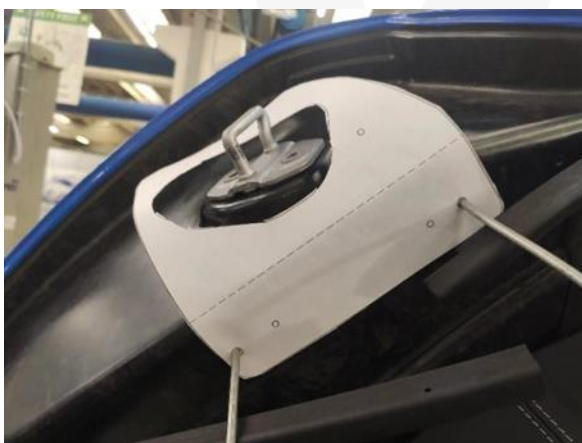
## Technical Procedure

 All images shown in this bulletin are for illustrative purposes only

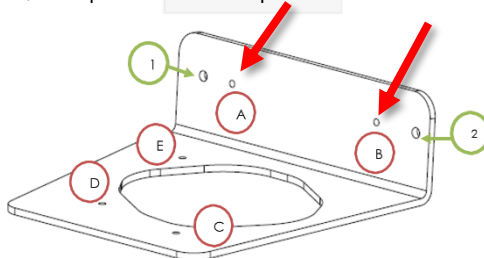
1. Always check ModisCS+ to see if the vehicle is involved in this action and if it has not been previously performed.
2. Before proceeding, Use all interior protection precautions listed in the workshop manual to avoid any damage to the interior of the vehicle.
3. Open the door and remove the gasket to free the 2 holes on which the gasket is secured (1 and 2 in the figure) and align the template to trace the points to be drilled. Protect the gasket with a taping to prevent damage and free the work area.



4. Apply the template, align it with the two holes of the gasket, and secure it with masking/painter's tape. Identify the position of the holes to be made on the door.



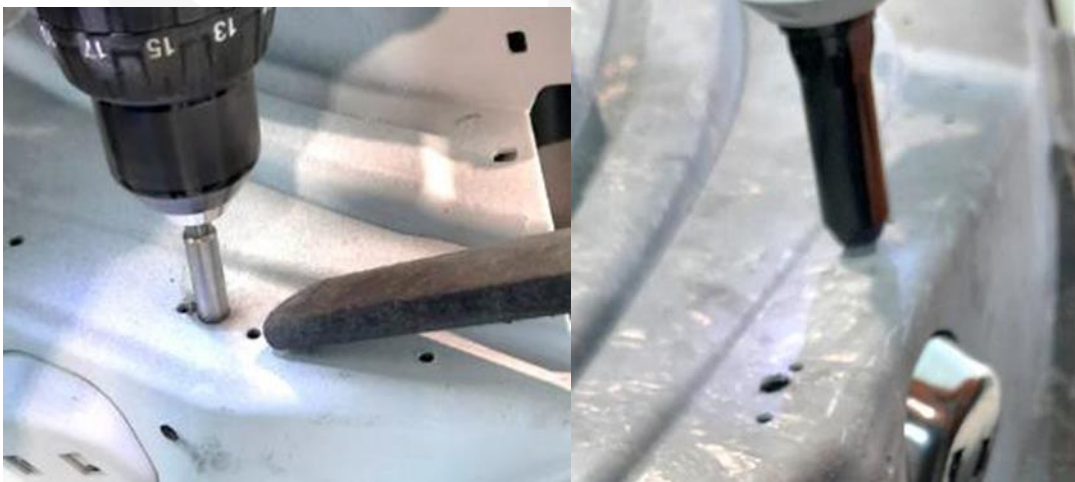
5. With a  $\varnothing$  3 mm diamond bit, drill pre-holes via positions A and B on the template.



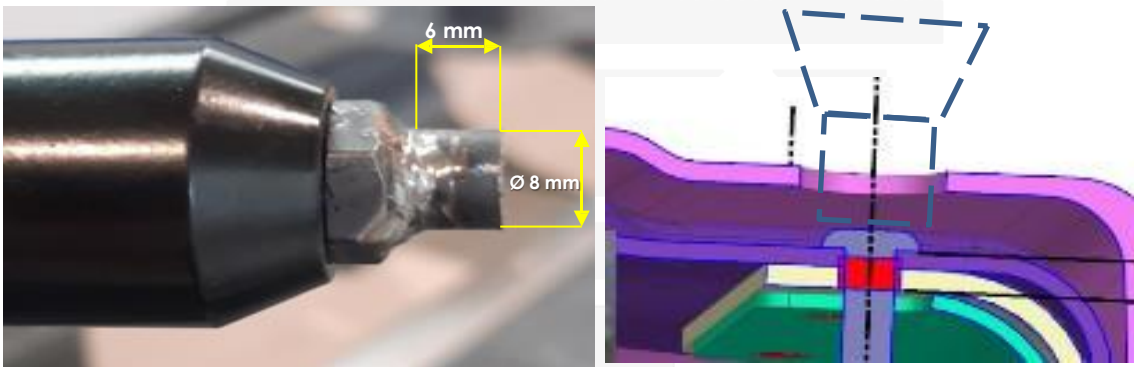
- Then countersink the holes using a chamfering/deburring tool with a 90 ° cone angle and a 16mm base diameter.



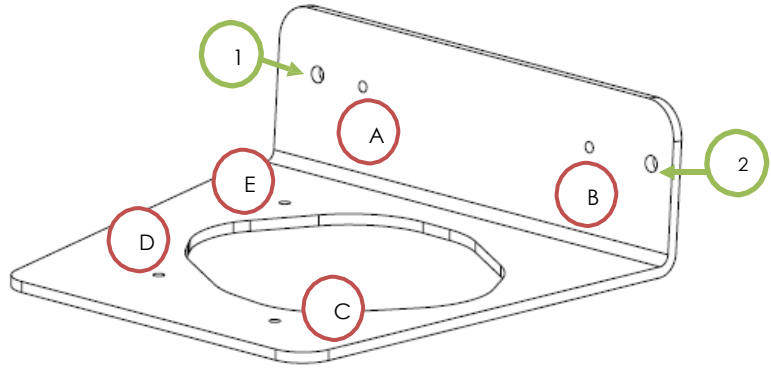
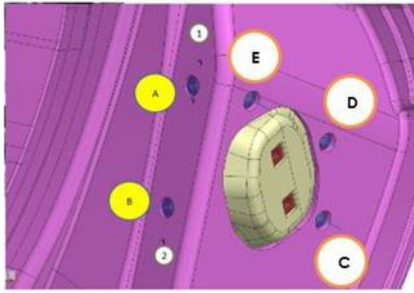
- At this point carry out the actual drilling with the diamond bit from  $\varnothing$  4.9 mm for rivets and, using a cutter with  $\varnothing$  10 mm centering, carry out the milling and subsequent riveting, using round head rivets 16 mm long for thicknesses 6.5-9.0 mm



**NOTE:** To ensure the correct riveting operation, it is highly recommended to set up a riveting gun with the tip size shown below with a guide diameter of 8mm and depth of 6mm to reach the bracket under the carbon surface.



8. Repeat the same operations also for points C, D, and E shown in the figure below.



1 and 2: Gasket reference holes to Center the template on the door

A - E: Holes to be made on the car for inserting rivets

- 9. Remove the taping and carefully reassemble the gasket, taking care to reinsert the sealing clips into the appropriate holes.
- 10. Repeat the Rework on the other door.
- 11. Rework complete.

## Warranty Claim

Fill in the Warranty Claims as follows:

Description	Code
Rapid Update Number	576
Warranty Code	23
Fault Code	063
Component Code	9.28.001
Operation Code	9.28.001.A (1,0 h)