



Thor Motor Coach Technical Service Bulletin

TSB #	TSB 24-06		
Description/Title:	Aria Generator Bracket Retrofit Assembly		
Affected Product Line(s):	Certain model year 2024.5–2025 Aria		
Service Campaign # :	RC000310		
Codes:	Inspect with Repair: TMCTS80226V	Released Date:	8/9/2024
Time Allowed:	Inspect with Repair: 2.5	Document Revision:	A

Issue:

The current generator bracket assembly prevents access to the generator oil filter access door located underneath.

Tools Required:

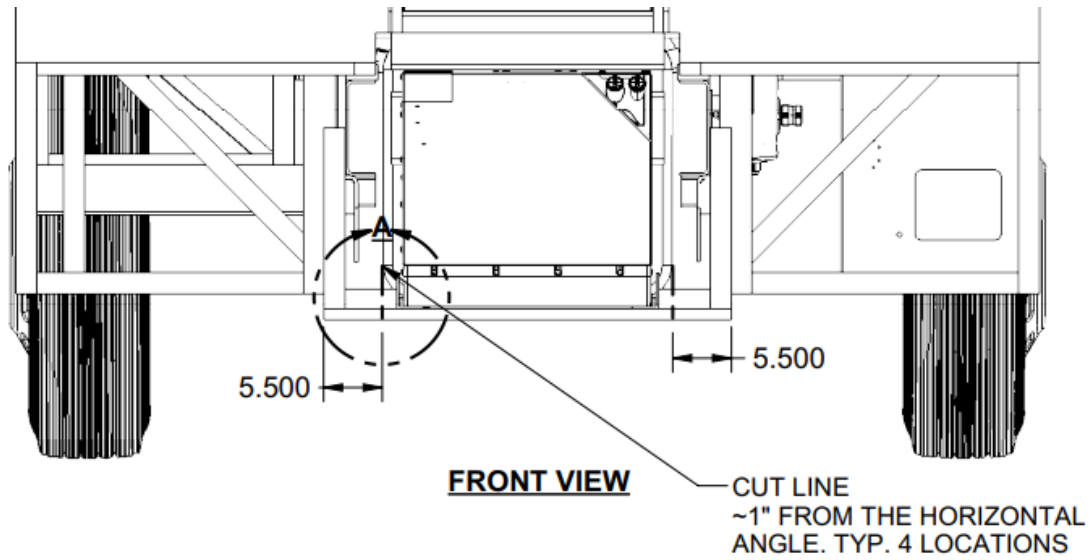
Reciprocating saw, metal blades, impact, 3/8” socket
 Shop pit, RV lift or RV sufficient jack/stands
 do not use the RV hydraulic leveling jacks to lift RV

Part(s) Required:

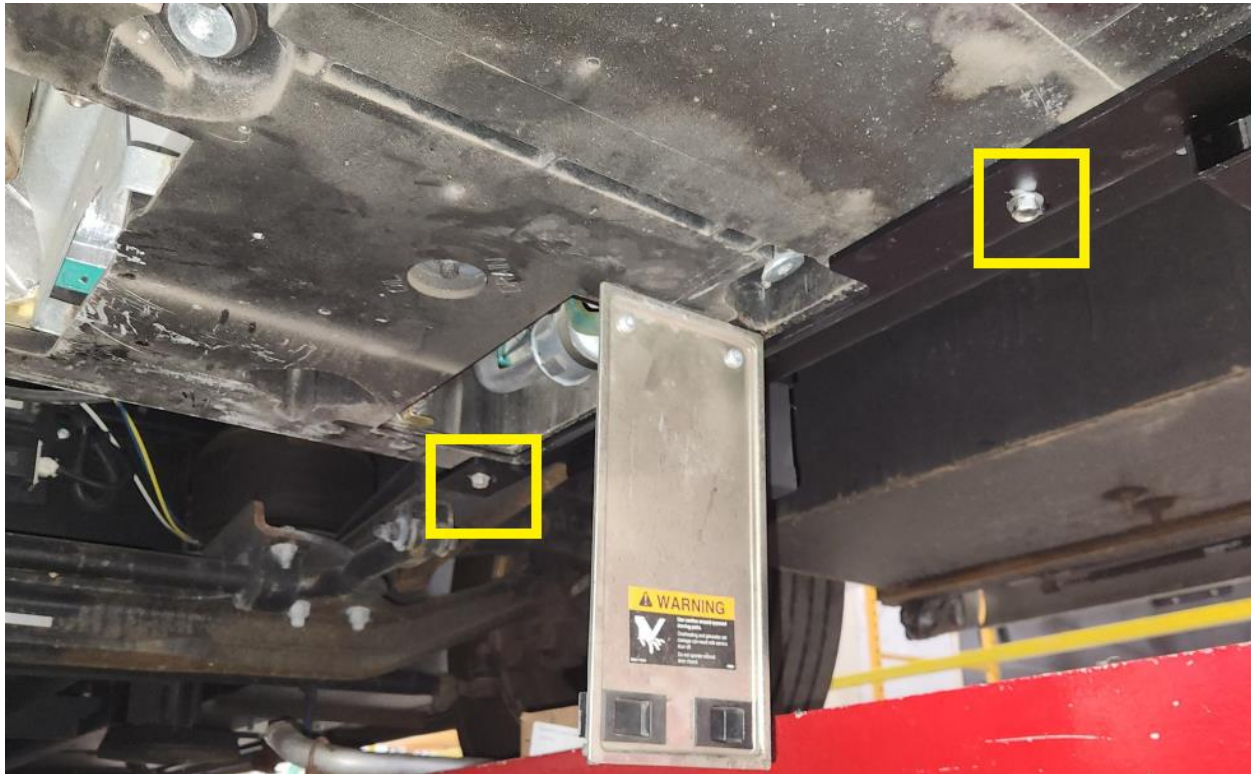
Kit # 0568664

Instructions:

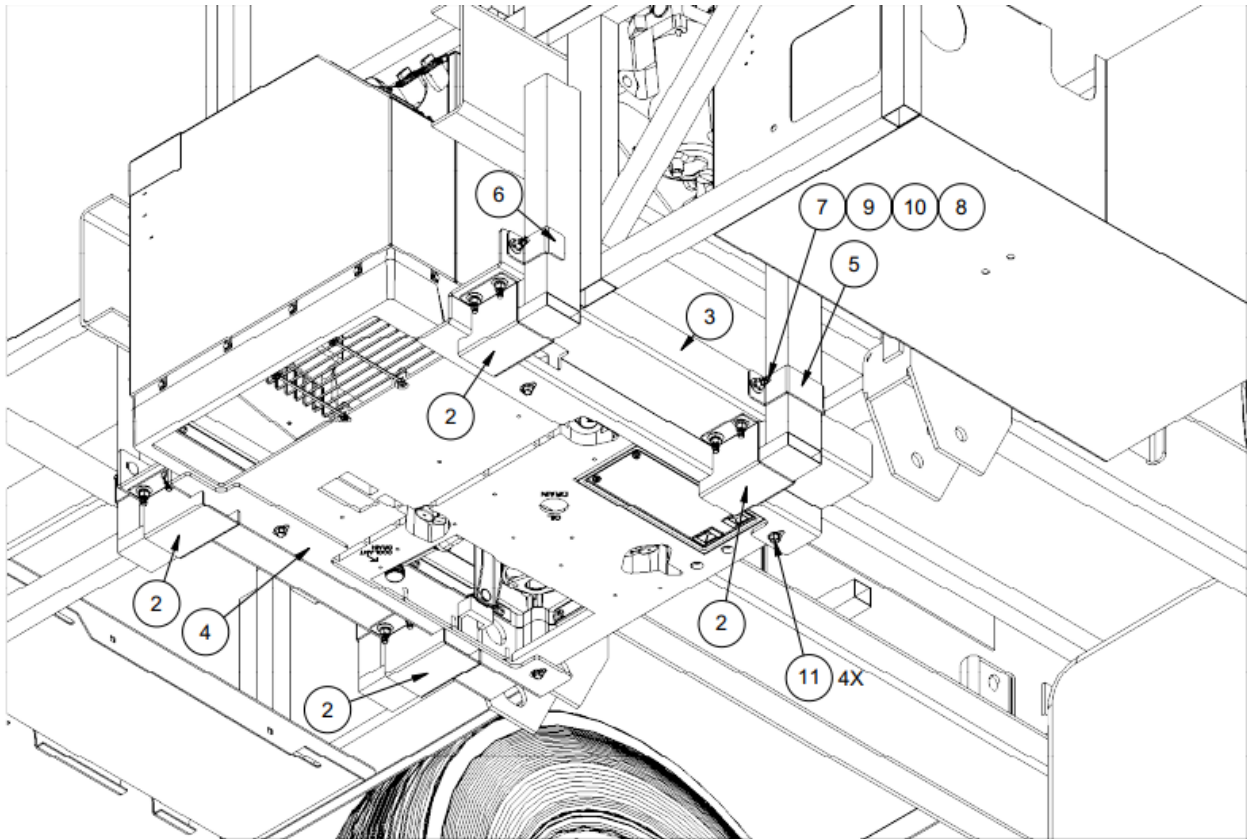
1. Secure RV over a floor pit, on an RV lift, or using jack/stands *do not use the RV hydraulic leveling jacks to lift RV*
2. Remove the generator exhaust
3. Loosen the bottom 4 generator/bracket bolts
4. Support the existing generator at the very front & rear using a stand slightly lifting generator pressure off existing generator bracket(s)
5. Measure, mark, and cut 5.5” from the outside of the tubes. 4 total (2 per side)



6. Paint raw metal where cut
7. Install the new retrofit driver and passenger side brackets using the original bolts, finger-tight, beginning with driver side.



Legend of the retrofit generator bracket assembly:



PARTS LIST				
NO	QTY	DESCRIPTION - W x L (GRAIN)	SIZE A	SIZE B
1	1	ONAN QD 8K (COMPLETE) 7-26-24		
2	4	BRACKET, GENERATOR, BOTTOM TUBE SUPPORT (TFM8863)		
3	1	BRACKET, GENERATOR, DRIVER SIDE (TFM8862)		
4	1	BRACKET, GENERATOR, PASSENGER SIDE (TFM8861)		
5	2	BRACKET, GENERATOR, TUBE CLAMP (TFM8865)		
6	2	BRACKET, GENERATOR, Z TUBE CLAMP (TFM8864)		
7	22	BOLT, CARRIAGE, 3/8"-16 X 1-1/2", GRADE 5, ZINC		
8	22	NUT, HEX, 3/8"-16, ZINC		
9	22	WASHER, FLAT, 3/8", ZINC		
10	22	WASHER, LOCK, 3/8 ZINC		
11	4	ONAN, OEM GENERATOR FASTENER		

8. Install the Z tube clamp brackets (#6) -finger tight

9. Install the tube clamp brackets (#5) -finger tight



10. Install the bottom tube support brackets (#2) -finger tight



11. Re-align the generator and brackets to make sure everything is straight
12. Torque each nut to 31 LB FT
13. Tighten the 4 bottom generator bolts to the brackets
14. Reinstall the generator exhaust

