

REFERENCE:	TSB: 08-197-24 GROUP: 08 - Electrical	Date:	September 6, 2024	REVISION:	—
VEHICLES AFFECTED:	2023 (DJ) RAM 2500 Pickup This bulletin applies to vehicles equipped with a 6.4L V8 Heavy Duty Hemi MDS Engine (Sales Code ESB) or a 6.7L I6 Cummins Turbo Diesel Engine.	MARKET APPLICABILITY:			
		<input checked="" type="checkbox"/> NA <input type="checkbox"/> MEA <input type="checkbox"/> SA <input type="checkbox"/> IAP <input type="checkbox"/> EE <input type="checkbox"/> CH			
CUSTOMER SYMPTOM:	The technician or customer may experience: <ul style="list-style-type: none"> While installing the Mopar service battery as a replacement for the factory battery, there is an interference issue with the right busbar cover on the positive terminal side of the battery. 				
CAUSE:	A difference in the placement of the positive busbar terminal over the service battery				

REPAIR SUMMARY:

This bulletin involves modifying the right busbar cover on the positive terminal side of the battery.

CLAIMS DATA:

Labor Operation No:	Labor Description	Skill Category	Labor Time
08-08-10-92	Cover, Battery Busbar - Modify Right Side (0 - Introduction)	6 - Electrical and Body Systems	0.2 Hrs.
Failure Code	ZZ	Service Action	

DIAGNOSIS:

If the customer describes any of the symptoms listed above in the customer symptom section, perform the Repair Procedure.

REPAIR PROCEDURE:

1. Remove the right busbar cover [Fig. 1](#).

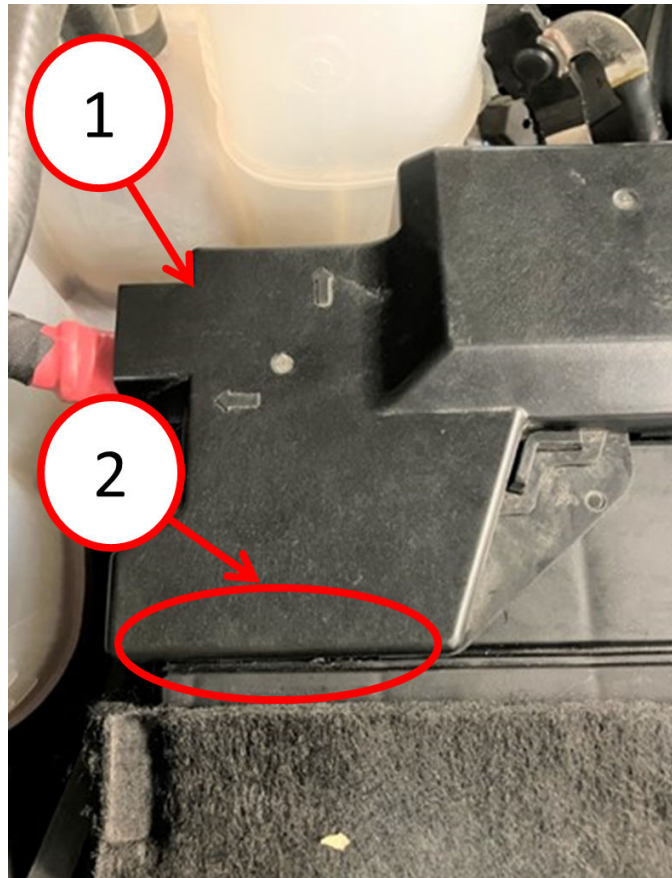


Fig. 1
Right Busbar Cover

1 - Busbar Cover
2 - Cover Area To Be Modified

2. Mark the cutting location starting width 16 mm (0.62 in.) from the cover edge and 54 mm (2.12 in.) wide [Fig. 1](#).
3. Using a suitable cutting tool, cut a window into the side of the busbar cover 20 mm (0.78 in.) high [Fig. 2](#) and 35 mm (1.37 in.) wide [Fig. 3](#).



Fig. 2
Vertical Area To Measure And Cut

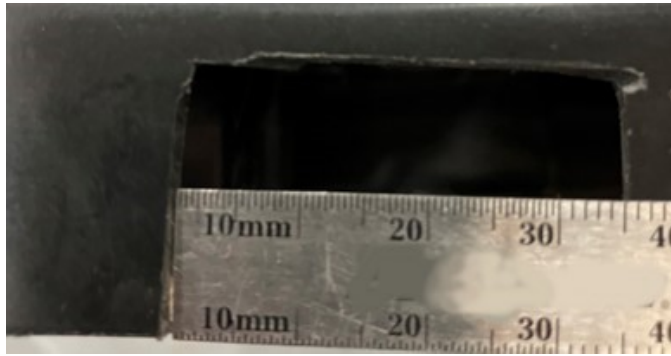


Fig. 3
Horizontal Area To Measure And Cut

4. Install the right busbar cover.

POLICY:

Reimbursable within the provisions of the warranty.

This bulletin is supplied as technical information only and is not an authorization for repair. No part of this publication may be reproduced, stored in a retrieval system, or transmitted, in any form or by any means, electronic, mechanical, photocopying, or otherwise, without written permission of FCA US LLC.