



Technical Service Bulletin

GROUP	NUMBER
CAMPAIGN	24-01-061G-1
DATE	MODEL(S)
SEPTEMBER 2024	G70 (IK)

SUBJECT: REAR COMBINATION LAMP GARNISH GAP INSPECTION AND REPLACEMENT (SERVICE CAMPAIGN T48G)

This TSB supersedes TSB # 24-01-061G to include 2 part numbers for Verbier White on page 2 (see yellow highlights).

★ IMPORTANT

Retailers must perform this service campaign on all affected vehicles prior to retail delivery to a guest and whenever an affected vehicle is in the shop for any maintenance or repair.

Access the "Vehicle Information" screen via WebDCS to identify open campaigns.



Description: This bulletin describes the procedure to inspect and replace the rear combination lamp garnishes that may begin to detach from the vehicle. The inspection and repair procedure involves confirming if the garnishes have separated and if necessary, removing the garnish and replacing with new parts.



Applicable Vehicles (Certain):

- 2023-2025MY G70 (IK) vehicles produced from 05/12/2023 to 05/03/2024

Parts Information:

Model	Part Name	Part Number		Color	Figure
		LH	RH		
G70 (IK)	Rear Combination Lamp Garnish	92435-G9500PH3QH	92436-G9500PH3QH	Vik Black	 LH Garnish
		92435-G9500UYHQH	92436-G9500UYHQH	Uyuni White	
		92435-G9500SSSQH	92436-G9500SSSQH	Savile Silver	
		92435-G9500NCMQH	92436-G9500NCMQH	Makula Gray	
		92435-G9500URAQH	92436-G9500URAQH	Tasman Blue	
		92435-G9500GRYQH	92436-G9500GRYQH	Vatna Gray	
		92435-G9500WHTQH	92436-G9500WHTQH	Alta White	
		92435-G9500RLAQH	92436-G9500RLAQH	Cavendish Red	 RH Garnish
		92435-G9500BLEQH	92436-G9500BLEQH	Kawah Blue	
		92435-G9500SMTQH	92436-G9500SMTQH	Bond Silver	
		92435-G9500MDYQH	92436-G9500MDYQH	Hallasan Green	
		92435-G9500NRBQH	92436-G9500NRBQH	Capri Blue	
		92435-G9500Z5EQH	92436-G9500Z5EQH	Havana Red	
		92435-G9500NA3QH	92436-G9500NA3QH	Verbier White	

NOTE: If it is found during inspection that one of the garnishes needs to be replaced, replace both garnishes.

Warranty Information:

Model	Op. Code	Operation	Op. Time	Causal Part	Nature Code	Cause Code
G70 (IK)	40D060R0	Rear Combination Lamp Garnish Gap Inspection (Both)	0.2 M/H	92435-G9500PH3	B1C	ZZ7
	40D060R1	Rear Combination Lamp Garnish Gap Inspection (Both) and Replacement (LH and RH)	0.6 M/H			

NOTE 1: Submit claim on Claim Entry Screen as “Campaign” type.

NOTE 2: If a part is found in need of replacement while performing this campaign and the affected part is still under warranty, submit a separate claim using the same repair order. If the affected part is out of warranty, submit a Prior Approval request for goodwill consideration prior to performing the work.

NOTE 3: This TSB includes Repair validation photos. Op times include VIN, Mileage, and Repair validation photo(s) as outlined in the Digital Documentation Policy.

NOTE 4: The incident parts are subject to callback through the normal Warranty Technical Center (WTC) parts return process. **Claim is subject to debit if the part is not returned.**

Service Procedure:

STUI



This TSB includes Repair validation photos. Refer to the latest Warranty Digital Documentation Policy for requirements.

Rear Combination Lamp Garnish Gap Inspection

1. On the rear combination lamp garnishes (A), lift up the end closest to the front of the vehicle and check if the garnish lifts off the tail lamp or is already visibly detached from the tail lamp.

NOTICE

When pulling on the garnish to check for lifting, be careful not to use excessive force which could cause the garnish to break.

GOOD: If both garnishes do not lift when pulled and/or are not visibly detached from the tail lamp, the garnishes do not need to be replaced.

Proceed to step 2 to submit a video.

NOT GOOD: If one or both of the garnishes lift off the tail lamp when pulling with fingernail/fingertip and/or are visibly detached from the tail lamp, both of the garnishes need to be replaced.



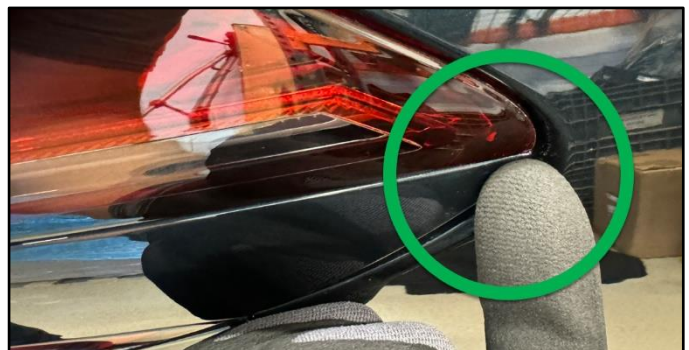
Information

Refer to the QR code or link below for garnish lifting example:

[Campaign T48G - G70 Tail Lamp Garnish Inspection](#)



Proceed to the **Rear Combination Lamp Garnish Replacement** section.



2.

STUI



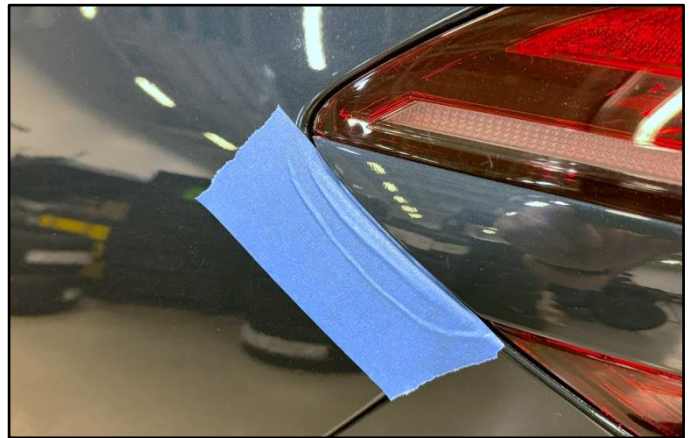
If **both** garnishes are **GOOD**, record a video showing the garnishes **NOT** detached and **NOT** lifting when pulled, with the last 6 digits of the VIN and the date of inspection on a piece of paper.

Upload the video to STUI.



Rear Combination Lamp Garnish Replacement

1. Before beginning the removal of the rear combination lamp garnish, prep the area with painter's tape to prevent any damage to the edge of the paint near the tail lamp if using a trim tool to start the removal.

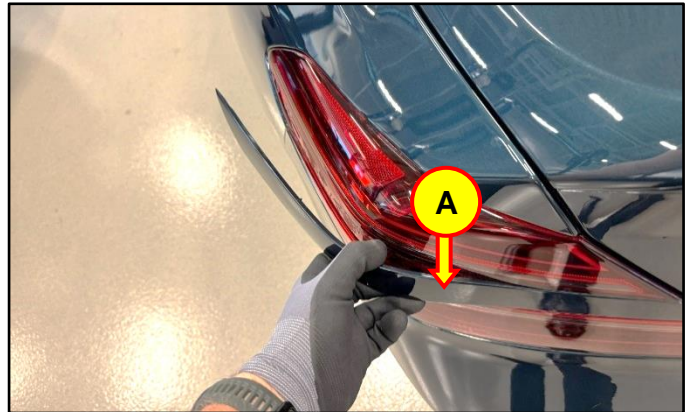


2. Remove the rear combination lamp garnish (A).

NOTICE

When removing the garnish, be careful **NOT** to scratch or otherwise damage the combination lamp housing. Use proper trim tools during removal.

Be careful **NOT** to apply excessive force which could break the garnish.



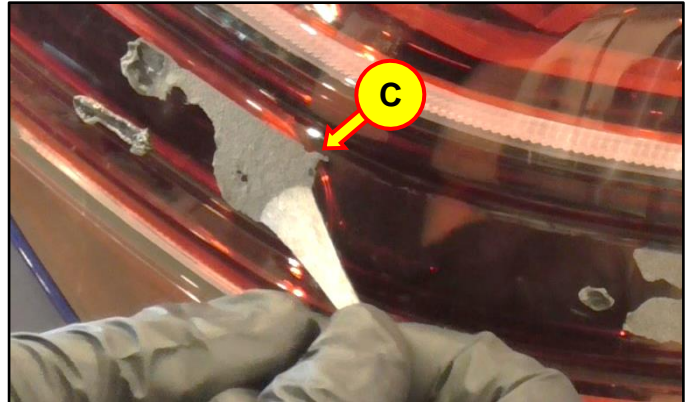
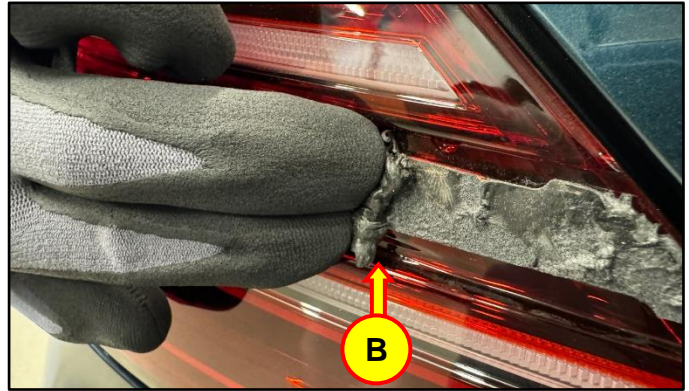
3. Remove any remaining double-sided tape by utilizing one or both of the following methods:
- Use a finger to roll away the adhesive (B).
 - Peel at a corner and pull the tape away as low to the tail lamp as possible (C). Pull in 1" increments to prevent the tape from breaking and to allow a smooth removal.

NOTICE

A heat gun on a low setting can be used to aide in removal of the double-sided tape. Exercise caution to prevent damaging the tail lamp when using the heat gun.

CAUTION

Be careful when removing hot double-sided tape to prevent injury.



4. Thoroughly remove any remaining substances from the rear combination lamp where the garnish will be mounted using rubbing alcohol and a clean rag.



5.

STUI



Using STUI, take a photo of the new rear combination lamp garnish with the last 6 digits of the VIN and the date of repair on a piece of paper.

Upload the photo to STUI.

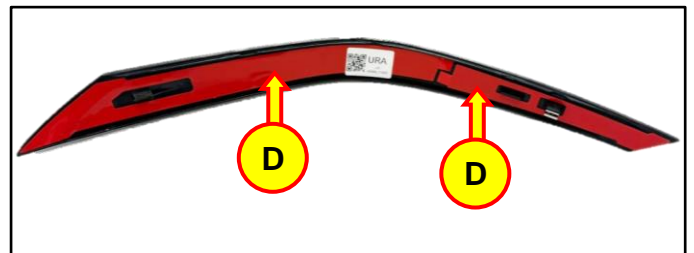
NOTE: Ensure the date on the part label is visible. Include the taillight with garnish removed in the background.



6. On the new combination lamp garnish, remove the red plastic covering from the double-sided tape (D).

NOTICE

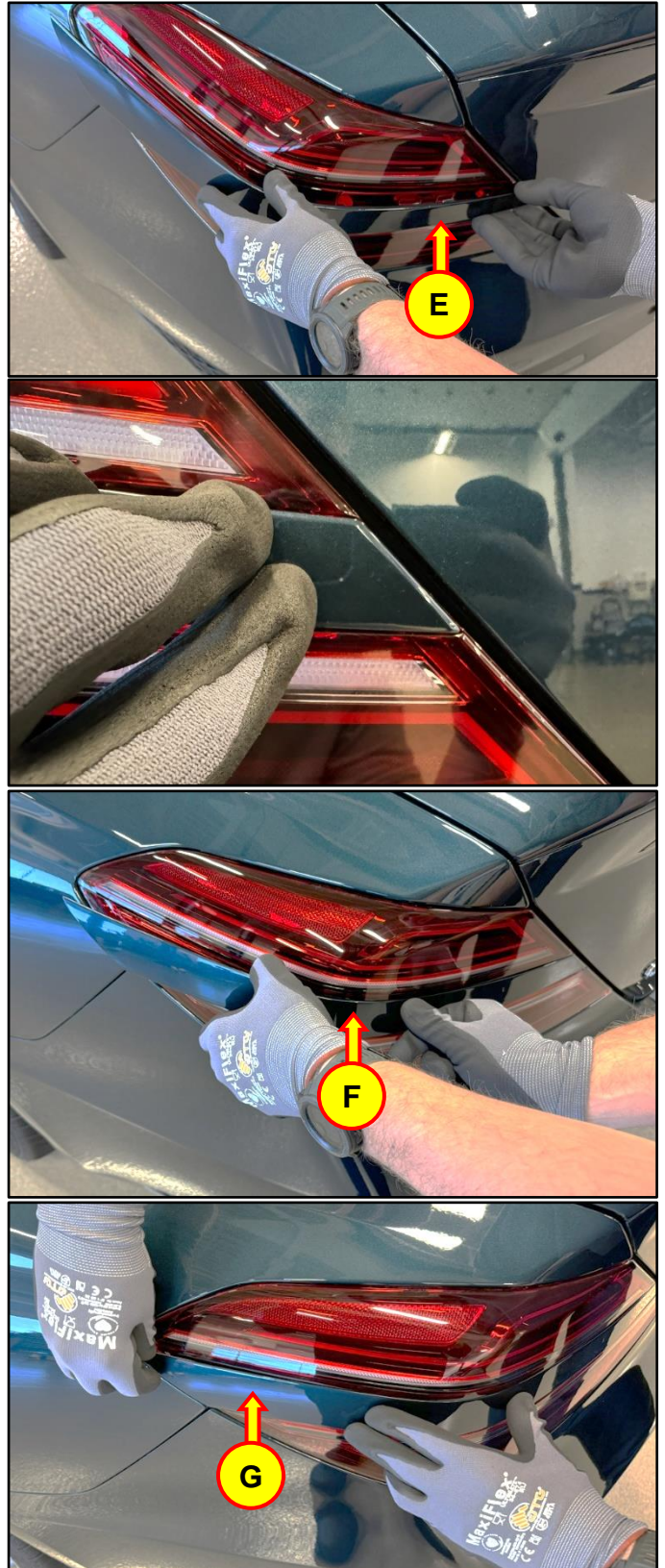
Ensure **no** foreign substances adhere to the double-sided tape prior to installation.



7. Install the combination lamp garnish in order (E → F → G) to ensure proper fitment on the rear combination lamp, starting at the end closest to the trunk.

NOTICE

Ensure the end of the garnish is flush with the rear combination lamp edges above and below the garnish.



8. Repeat steps 1 – 7 for the rear combination lamp garnish on the opposite side.
9. The service procedure is now complete.