



INSTRUCTION TO SERVICE

ITS61120		August 9, 2024
SECTION:	420 – Shell Exterior	
WRITTEN BY:	New Flyer Service Engineering	
SUBJECT:	R&R Lock Handles on Baggage Doors, WCL Door & Rear Side Service Door. Install Handle Lever Arm Stopper Brackets on WCL & Rear Side Service Doors.	
ISSUE:	Existing paddle latches are failing	
SUMMARY:	Remove the faulty lock handles and replace them with an upgraded lock handles on the Baggage, WCL & Rear Side Service doors. Install stopper brackets on the WCL & Rear Side Service doors.	

ITS61120

Ref. NHTSA Recall No.	Ref. Transport Canada Recall No.
Not Applicable	Not Applicable

THIS ITS DOCUMENT SHOULD BE RETAINED AND REFERRED TO FOR FUTURE MAINTENANCE UNTIL THE PARTS AND/OR SERVICE MANUAL IS UPDATED TO REFLECT WORK DONE AS A RESULT OF THIS DOCUMENT. ENSURE THAT THIS DOCUMENT IS AVAILABLE FOR PARTS AND MAINTENANCE STAFF GOING FORWARD.

PROCEDURE:

1. Set park brake and chock wheels.
2. Turn the main battery disconnect switch to the "OFF" position.
3. Locate the six baggage doors, the wheelchair lift door, and the rear side service door as shown in Figure 1.

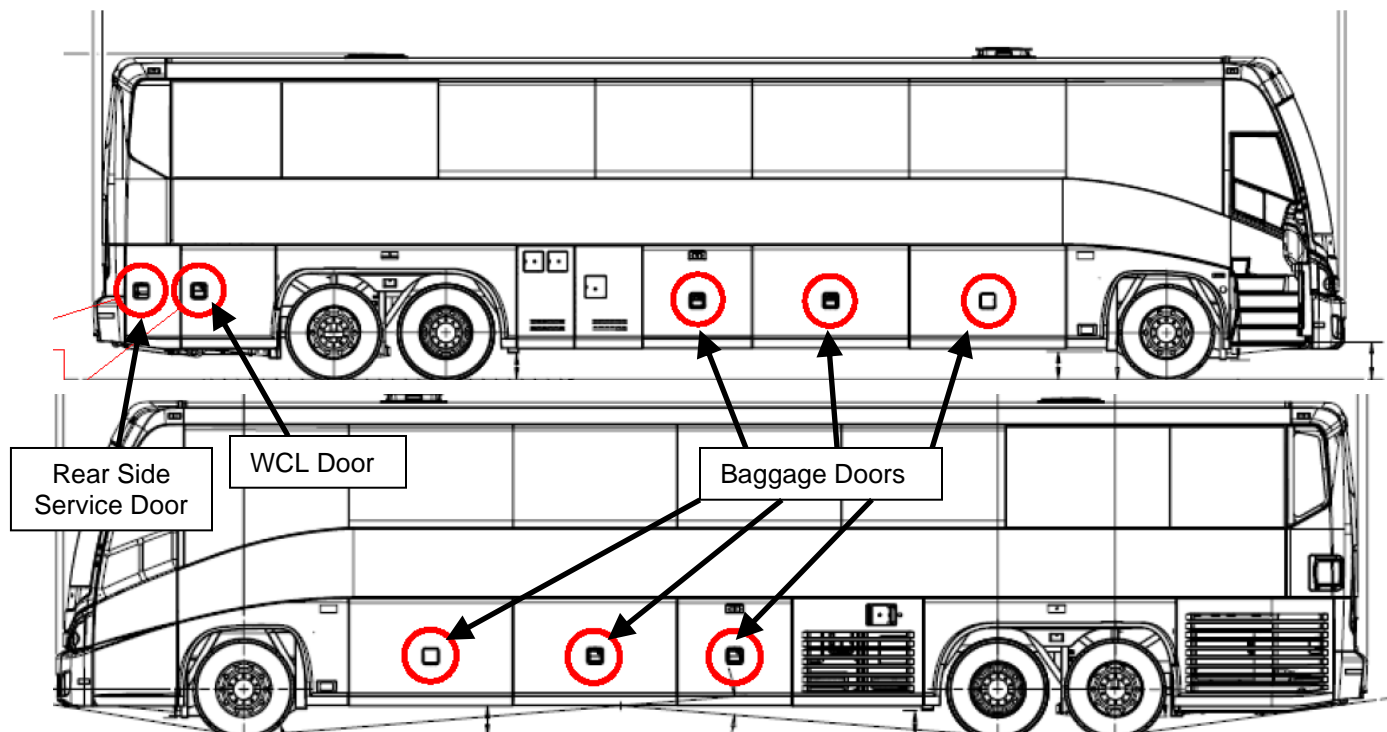


Figure 1: Lock Handle Locations

4. Remove and discard all the eight lock handles shown in Figure 1. Retain the lock cylinders for reassembly.
5. Install the existing lock cylinders into the new lock handles (PN 1056412). Ensure the linkages are connected properly. Apply Blue Loctite (PN 21-7212-18) to the threads of the lock cylinder prior to tightening it. Ensure not to apply the Loctite to the plastic handle.
6. Install the assembled lock handles back into the baggage doors. Use four new washers (PN 19-2-23), four new screws (PN 19-1-386) to fasten them in place. Apply 1-2 drops of Loctite 243 (PN 23-02-0088) to the threads of the hardware and torque to 9-11 Ft/Lbs. Use a paint marker and apply a torque stripe. Ensure the lock handle linkages are re-connected properly and test doors for proper operation. Adjust as required.
7. Install the assembled lock handles back into the rear side service and the wheelchair lift doors. Use three new washers (PN 19-2-23), three new screws (PN 19-1-386) to fasten them in place in the three holes shown in Figure 2. Apply 1-2 drops of Loctite 243 (PN 23-02-0088) to the threads of the hardware and torque to 9-11 Ft/Lbs. Use a paint marker and apply a torque stripe.

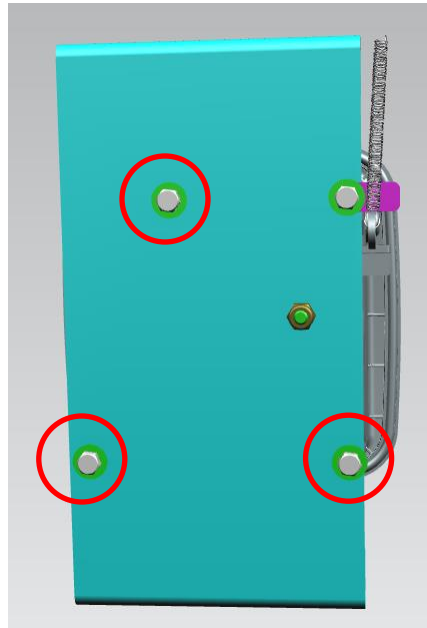


Figure 2: First Three Locations to Fasten

8. Locate the new handle lever arm stopper bracket (PN 1093572). Apply friction gasket (PN 1093498) to the left-hand side of the stopper bracket. See Figure 3. Cut friction gasket to size as needed.



Figure 3: Apply Friction Gasket to Stopper Bracket

9. In the fourth screw location, install the new handle lever arm stopper bracket (PN 1093572) then fasten in place using one new washer (PN 19-2-23), one new screw (PN 19-1-386). Make sure the position of the link is at closed position so that the position of the stopper could be adjusted, and it is not interfering with the link while locking the door. See Figure 4. Apply 1-2 drops of Loctite 243 (PN 23-02-0088) to the threads of the hardware and torque to 9-11 Ft/Lbs. Use a paint marker and apply a torque stripe.

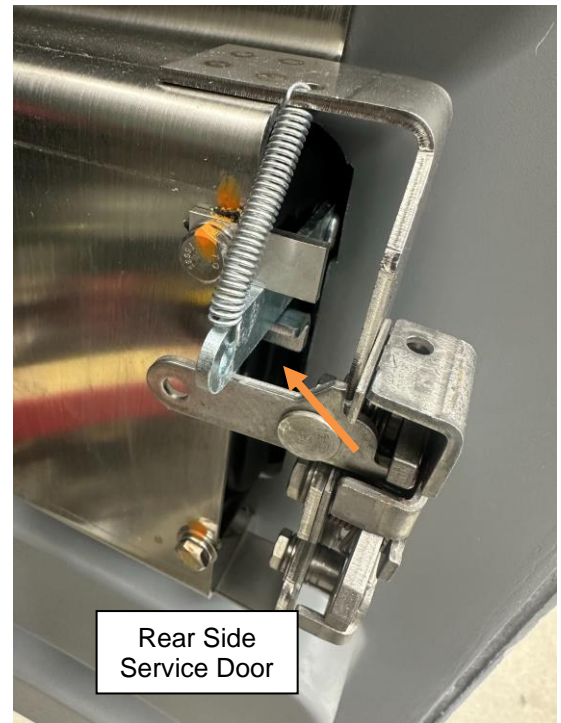


Figure 4: Adjusted Stopper Bracket with Link in Closed Position

10. Ensure the lock handle linkages are re-connected properly and test doors for proper operation. Adjust as required.
11. Clean up all tools and debris and return the coach to service condition.
12. Turn the main battery disconnect switch to the "ON" position.



LABOUR ESTIMATE

	Operation	Number of Technician(s)	Hours	Labor Time T X HR
1	R&R Lock Handles on Baggage Doors, WCL Door & Rear Side Service Door. Install Handle Lever Arm Stopper Brackets on WCL & Rear Side Service Doors.	1	4.0	4.0

PARTS REQUIRED

Item	Part Number	Description	Qty. per Coach	Units	Notes
1	1056412	HANDLE-CODEABLE LOCK	8	EA	Parts Ordered PPSO
2	21-7212-18	ADHESIVE-LOCTITE THRD-LOCKING	0.01	EA	Source Locally
3	23-02-0088	ADHESIVE-LOCTITE 243	0.01	EA	Source Locally
4	1093572	BRKT-STOPPER HANDLE LEVER ARM	2	EA	Parts Ordered PPSO
5	1093498	GASKET-FRICTION,HANDLE	1	EA	Parts Ordered PPSO
6	19-2-23	WASHER-FLAT,1/4 ID,STAINLESS	32	EA	Parts Ordered PPSO
7	19-1-386	SCREW-CAP,HEX,1/4-20UNC X 1/2" STAINLESS	32	EA	Parts Ordered PPSO