



# Technical Service Bulletin

## 55 Guide to finding water ingress on the rear lid structure

55 24 01 2073283/2 August 30, 2024. Supersedes Technical Service Bulletin Group 55 number 24-93 dated March 5, 2024 for reasons listed below.

Model(s)	Year	VIN Range	Vehicle-Specific Equipment
Q4 e-tron, and Q4 Sportback e-tron	2022 - 2025	All	Not Applicable

## Condition

REVISION HISTORY		
Revision	Date	Purpose
2	-	Revised header (Add MY 2024 - 2025) Revised <i>Service</i> (Add photo / video documentation requirement) Revised <i>Required Parts and Tools</i> (Remove images) Revised <i>Required Parts and Tools</i> (Remove tools table)
1	03/06/2024	Initial publication

### Customer states:

- When the rear lid is opened, water can be heard sloshing from the bottom of the rear lid shell to the top of the rear lid shell.
- Water may run into the rear lid hinges and into the vehicle.

### Workshop findings:

- The presence of water is confirmed in the rear lid shell. The point of water entry cannot be conclusively determined.

## Technical Background 1

The seam sealer used to seal adjoining panels may have a flaw causing a small opening that can allow water to enter the rear lid shell. This TSB shows areas of the rear lid shell where sealer flaws may exist.

## Production Solution

The sealer application process has been improved in production.



# Technical Service Bulletin

---

## Service

### NOTICE

Confirm the symptom, and that it is clearly attributable to the issue described in the *Technical Background* in this TSB. The following work procedure must only be carried out if the symptom described has been confirmed and the source of the water ingress is as described in the *Technical Background*.

1. Remove the rear lid trim and perform a leak test on the rear lid. With the lid trim removed visual and physical access to the rear lid structure can be gained. Mix a solution of dish detergent and water and add to a spray bottle. Spray the solution on the area shown in Figures 1, 2 and 3 while blowing compressed air from the inside of the rear lid structure and watch for bubble formation.



**Figure 1.** Bubble formation with compressed air applied internally.



# Technical Service Bulletin

---



*Figure 2. Bubble formation with compressed air applied internally.*



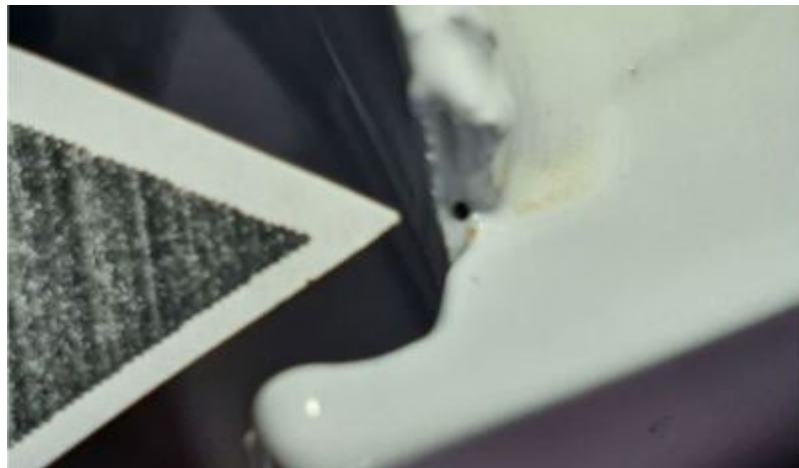
# Technical Service Bulletin

---

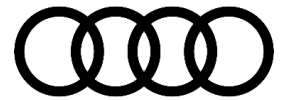


*Figure 3. Bubble formation with compressed air applied internally.*

4. Figure 4 shows a possible location of insufficient sealant.



*Figure 4. Area where sealant may be missing.*



# Technical Service Bulletin

5. In cases where the sealer flaw is in a concealed area (e.g., behind a tail lamp) the openings can be repaired by applying D 476KD1M2 or D 476KD1M3 sealant to the openings with a brush. To the corresponding area on the inside of the rear lid shell apply D 321M16M2 cavity preservative using a brush. Ensure the application area is thoroughly clean and allow the sealant to cure as instructed. Touch up painted surfaces as necessary.



**Figure 5.** Concealed areas repaired with D 476KD1M2 or D 476KD1M3 sealant.

6. If the sealer flaw is in a visible area send the vehicle to your body shop for repair as finish paintwork will be required.
7. Please take photos of the customers' concern and upload them into DOC-IT with the repair order. Photos should
- Have a date stamp and VIN reference.
  - Be taken in focus and with sufficient light.

## Warranty

<b>Claim Type:</b>	<ul style="list-style-type: none"> <li>• If the vehicle is outside any warranty, this Technical Service Bulletin is informational only.</li> </ul>		
<b>Service Number:</b>	5559		
<b>Damage Code:</b>	0050		
<b>Labor Operations:</b>	Remove and install rear lid trim	7092 1900	See SRT with associated operations
	Center taillight lens remove and reinstall	9432 1950	See SRT with associated operations
	Leak inspection of rear lid and perform sealant restoration	5559 5199	30 TU
	Body paint application with a brush. Includes the paint material (concealed area).	5101 7941	See SRT with associated operations



# Technical Service Bulletin

	Body repair and paint work through body shop. Includes the surface preparation (visible area).	5101 7999	150 TU
	Body seal coat cavity	5101 7501	See SRT with associated operations
<b>Diagnostic Time:</b>	GFF	No allowance	0 TU
	Road test prior to the service procedure	No allowance	0 TU
	Road test after the service procedure	No allowance	0 TU
<b>Claim Comment:</b>	As per TSB 2073283/2		

All warranty claims submitted for payment must be in accordance with the *Audi Warranty Policies and Procedures Manual*. Claims are subject to review or audit by Audi Warranty.

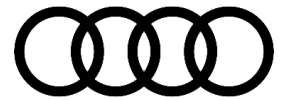
## Required Parts and Tools

Always check with your Parts Department and/or ETKA for the latest information and parts bulletins.		
Part Number	Part Description	Quantity
See ETKA	Fasteners, Bolts, Nuts, and Screws as needed per the Repair Manual	See ETKA/ELSA
D 476KD1M2 -OR- D 476KD1M3	Sealant	0.1
D 321M16M2	Anti-corrosion wax	0.3
Or the following alternative product available from the <i>Top Service Supplies and Touch Up Paint e-store</i> :		
08852 3M™ Cavity Wax	Cavity Wax	0.3

## Additional Information

All parts and service references provided in this TSB (**2073283**) are subject to change and/or removal.

©2024 Audi of America, Inc. All rights reserved. The information contained in this document is based on the latest information available at the time of printing and is subject to the copyright and other intellectual property rights of Audi of America, Inc., its affiliated companies, and its licensors. All rights are reserved to make changes at any time without notice. No part of this document may be reproduced, stored in a retrieval system, or



# Technical Service Bulletin

---

transmitted in any form or by any means, electronic, mechanical, photocopying, recording, or otherwise, nor may these materials be modified or reposted to other sites without the prior expressed written permission of the publisher.