

**Fluid in Rear Left Footwell / Rear Window Washer System does not Work: Replacing T-Piece and Section of Hose for Rear Window Washer System (94/23)**

Model Line: **Macan (95B)**

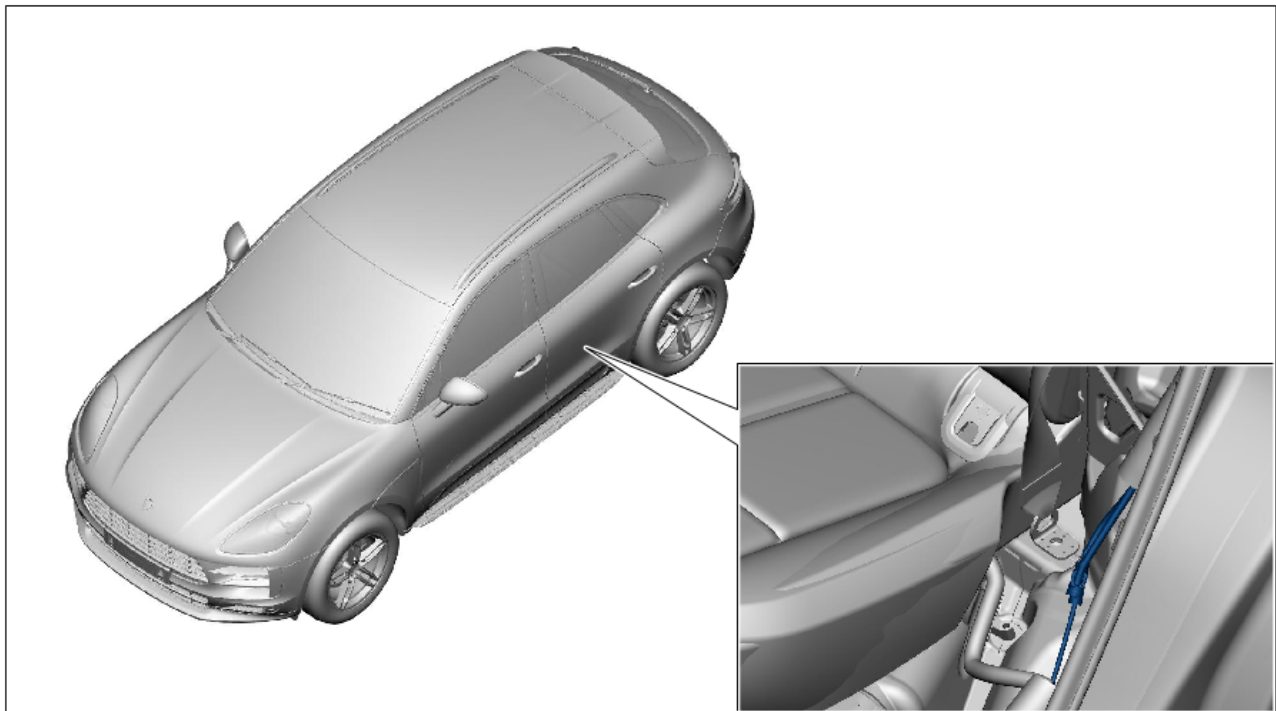
Model Year: **As of 2019 up to 2023**

Concerns: **Rear window washer system**

Cause: **Customer complains about fluid/moisture in the rear left footwell as well as the failure of the rear window washer system and the reversing camera cleaning function.**  
It is possible that a blanking plug may have come loose on the T-piece in the rear window washer system hose.

Action: If there is a customer complaint, replace the previous T-piece and section of the rear window washer system hose.

Installation  
Position:



*T-piece of rear window washer system*

**Required parts and materials**

Parts Info:	Part No.	Designation – Location	Number
	95B898100	⇒ Repair kit for rear window washer system Consisting of: – T-piece – Coupling	1 piece
	N 90737803	⇒ M6 x 14 internal hexagon round-head countersunk screw – Rear left backrest	1 piece
	N 91209801	⇒ Countersunk screw with internal serration – Screw for center seat-belt mount on body	1 piece

**Additionally required parts for vehicles with the following equipment: Front and rear side airbag with head airbag (M-No. 4X4)**

N 90910102	⇒ M5 x 18 oval-head screw – Rear left side airbag	1 piece
N 10623001	⇒ BM5 x 40 flathead screw – Rear left side airbag	1 piece

Materials: **Required materials** (usually already available in the Porsche Center):

Part No.	Designation	Quantity
...	⇒ Fabric adhesive tape	As required

**Required Tools**

Tools:	<ul style="list-style-type: none"> <li>• Torque wrench, 2 – 10 Nm (1.5 – 7.5 ftlb.), e.g. <b>V.A.G 1783 - torque wrench, 2 – 10 Nm (1.5 – 7.5 ftlb.)</b></li> <li>• Torque wrench, 6 – 50 Nm (4.5 – 37 ftlb.), e.g. <b>V.A.G 1331A - torque wrench, 6 – 50 Nm (4.5 – 37 ftlb.)</b></li> <li>• <b>P90999 - PIWIS Tester 4</b></li> <li>• Battery charger with a current rating of <b>at least 90 A, VAS 5908 - battery charger 90 A</b></li> </ul>
--------	---

## Preparatory work

- Work Procedure: 1 Unclip in the front left door sill trim in the rear area.  
For procedure, see: ⇒ *Workshop Manual '680519 Removing and installing front door sill trim inner'*
- 2 Remove the upper part of the B-pillar trim panel at the left.  
For procedure, see: ⇒ *Workshop Manual '706719 Removing and installing upper part of B-pillar trim panel'*
- 3 Remove the lower part of the B-pillar trim panel at the left.  
⇒ *Workshop Manual '70671903 Removing and installing lower part of B-pillar trim panel'*
- 4 Remove the rear seat.  
⇒ *Workshop Manual '724819 Removing and installing rear seat'*
- 5 Unscrew fastening screw ⇒ *Center seat belt mount -1-* for center seat belt mount ⇒ *Center seat belt mount -2-*.
- 
- ### Information
- When removing the backrest on the left backrest, it is not necessary to remove the belt buckle.
- 
- Center seat belt mount*
- 6 Remove the left rear backrest.  
⇒ *Workshop Manual '724719 Removing and installing rear backrest'*
- 7 Remove the rear luggage compartment side trim panel at the left.  
⇒ *Workshop Manual '700319 Removing and installing rear luggage compartment side trim panel'*
- 8 **If the vehicle has a rear left side airbag (M-No. 4X4) installed:**  
Remove the rear side airbag at the left.  
⇒ *Workshop Manual '696419 Removing and installing rear side airbag'*
- 9 Remove the rear inner door sill trim at the left.  
⇒ *Workshop Manual '680519 Removing and installing rear inner door sill trim'*

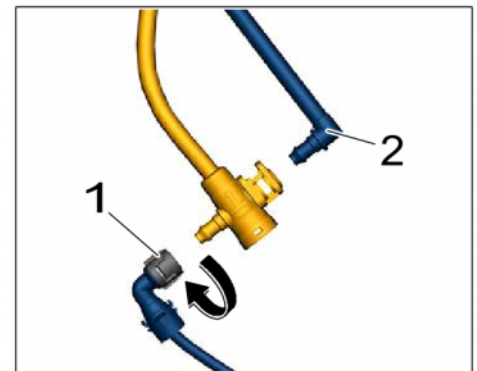
## Replacing T-piece and section of hose for rear window washer system

Work Procedure: 1 **Carefully** cut open the fabric adhesive tape and foam. Uncover T-piece ⇒ *T-piece and section of corrugated tube for rear window washer system (installation position under foam shown) -1-* and approx. 100 mm of the corrugated tube of the rear window washer system.



*T-piece and section of corrugated tube for rear window washer system (installation position under foam shown)*

- 2 Release and pull off the hose connections on the previous T-piece.
  - 2.1 Using suitable means, cover the area around the T-piece and hose connections and catch the leaking washer fluid.
  - 2.2 Release the washer fluid hose connection for the reversing camera ⇒ *Hose connections for rear window washer system -2-* and pull off the hose connection.



*Hose connections for rear window washer system*

- 2.3 Turn (white) locking element  $\Rightarrow$  *Hose connections for rear window washer system -1-* of the hose connection of the washer fluid pump **clockwise by 90°**  $\Rightarrow$  *Hose connections for rear window washer system -Arrow-* to release the hose connection (the white locking lugs of the locking element protrude).  $\Rightarrow$  *Locking element released*



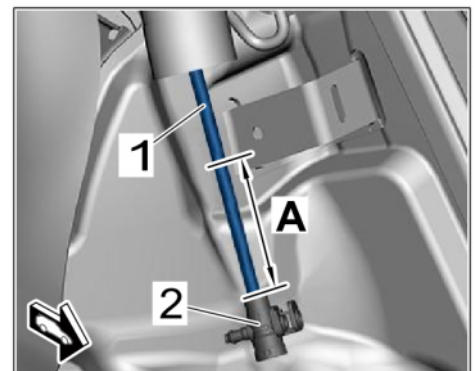
*Locking element released*

- 2.4 Pull off the hose from the T-piece. Then turn locking element (white)  $\Rightarrow$  *Hose connections for rear window washer system -1-* back **to the locking position** (the white locking lugs in the locking element are flush).  $\Rightarrow$  *Locking element locked (locking position)*



*Locking element locked (locking position)*

- 3 Disconnect the corrugated tube for rear window washer system  $\Rightarrow$  *T-piece and corrugated tube for rear window washer system -1-* at a distance of approx. 65 mm  $\Rightarrow$  *T-piece and corrugated tube for rear window washer system -A-* from previous T-piece  $\Rightarrow$  *T-piece and corrugated tube for rear window washer system -2-*.  
Dispose of the corrugated tube section with the previous T-piece.

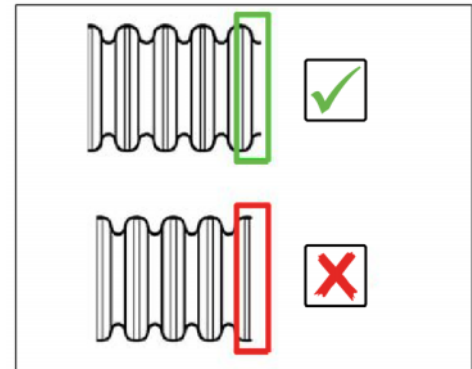


*T-piece and corrugated tube for rear window washer system*



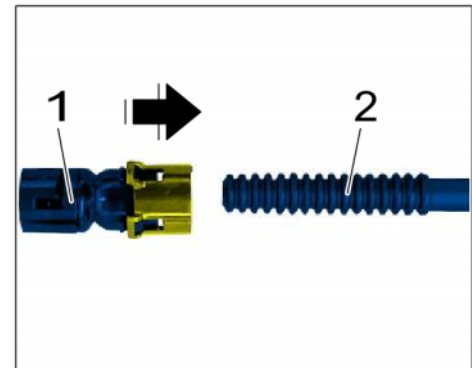
## Information

**Observe the corrugated tube connection point:**  
Disconnect the corrugated tube between the shafts.  
⇒ *Corrugated tube connection point*



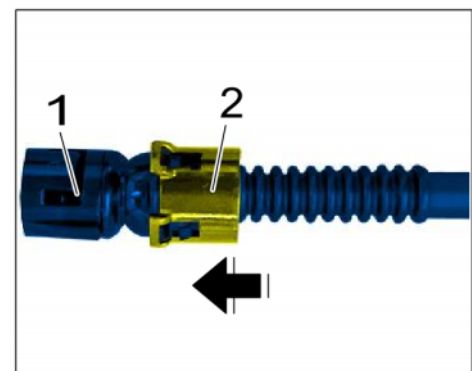
*Corrugated tube connection point*

- 4 Push **new coupling** ⇒ *Coupling (coupling not locked in place) and corrugated tube for rear window washer system -1-* from the repair kit as far as it will go onto the vehicle-side end of corrugated tube ⇒ *Coupling (coupling not locked in place) and corrugated tube for rear window washer system -2-* ⇒ *Coupling (coupling not locked in place) and corrugated tube for rear window washer system -Arrow-*.



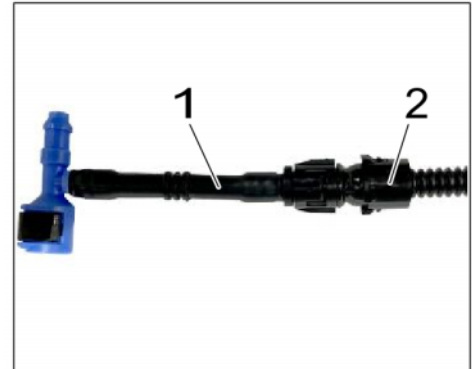
*Coupling (coupling not locked in place) and corrugated tube for rear window washer system*

- 5 Move locking element ⇒ *Coupling (coupling locked in place) and corrugated tube for rear window washer system -2-* by hand or with a suitable tool ⇒ *Coupling (coupling locked in place) and corrugated tube for rear window washer system -Arrow-* and lock it in place. All four locking lugs must be locked in place on coupling ⇒ *Coupling (coupling locked in place) and corrugated tube for rear window washer system -1-*.



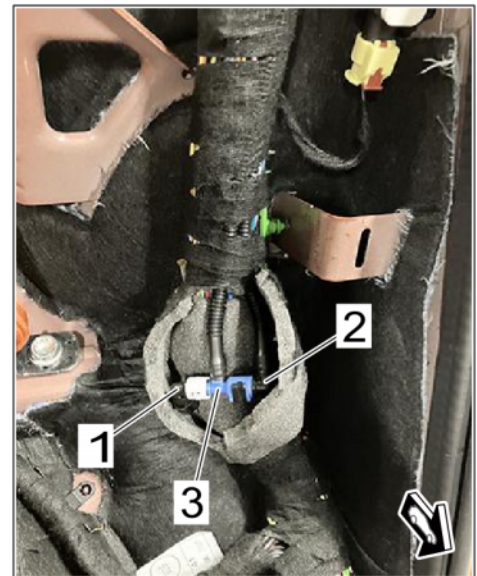
*Coupling (coupling locked in place) and corrugated tube for rear window washer system*

- 6 Connect and lock the hose connection of **new T-piece** ⇒ *New T-piece on corrugated tube for rear window washer system -1-* from the repair kit onto **new coupling** ⇒ *New T-piece on corrugated tube for rear window washer system -2-*.



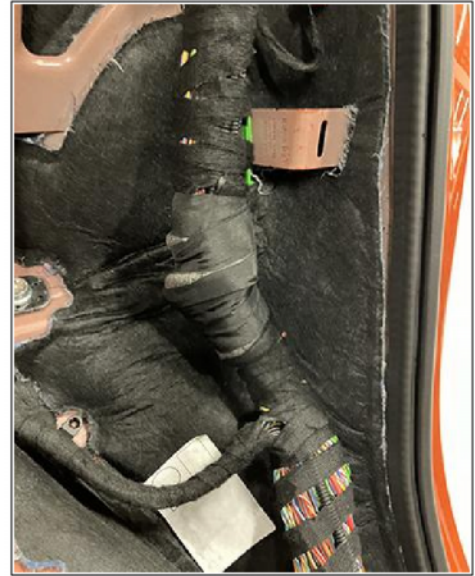
*New T-piece on corrugated tube for rear window washer system*

- 7 Connect hose connections ⇒ *New T-piece installed -1 and 2-* to new T-piece ⇒ *New T-piece installed -3-* and lock them in place.



*New T-piece installed*

- 8 Lay the T-piece and hose for the rear window washer system and secure them with fabric adhesive tape.  
⇒ *Reworked section of main wire harness for passenger compartment*
- 9 Remove any leaked fluid and dry the footwell.



*Reworked section of main wire harness for passenger compartment*

### Follow-up actions

- Work Procedure: 1 Install the rear inner door sill trim at the left.  
⇒ *Workshop Manual '680519 Removing and installing rear inner door sill trim'*
- 2 **If the vehicle has a rear left side airbag (M-No. 4X4) installed,**  
Install the rear side airbag at the left.  
⇒ *Workshop Manual '696419 Removing and installing rear side airbag'*
  - 3 Install the left rear luggage compartment side trim panel.  
⇒ *Workshop Manual '700319 Removing and installing rear luggage compartment side trim panel'*
  - 4 Install the left rear backrest.  
⇒ *Workshop Manual '724719 Removing and installing rear backrest'*

5 Screw in **new** fastening screw ⇒ *Center seat belt mount -1-* for middle seat belt mount ⇒ *Center seat belt mount -2-* and use **Tightening torque 55 Nm**.

6 Install the rear seat.  
⇒ *Workshop Manual '724819 Removing and installing rear seat'*

7 Install the lower part of the B-pillar trim panel at the left.  
⇒ *Workshop Manual '70671903 Removing and installing lower part of B-pillar trim panel'*

8 Install the upper part of the B-pillar trim panel at the left.  
⇒ *Workshop Manual '706719 Removing and installing upper part of B-pillar trim panel'*

9 Clip in the front left door sill trim in the rear area.  
For procedure, see: ⇒ *Workshop Manual '680519 Removing and installing front door sill trim inner'*

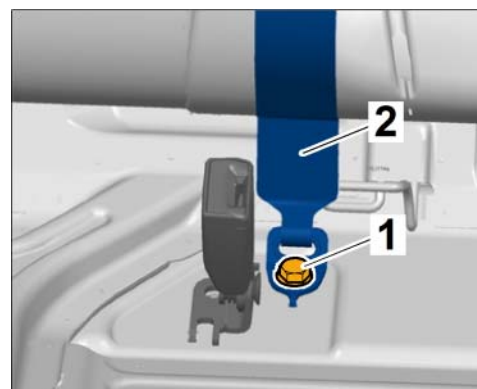
10 Connect and switch on the battery charger.  
⇒ *Workshop Manual '270689 Charging battery/vehicle electrical system'*

11 Connect the **P90999 - PIWIS Tester 4**, switch on ignition and start the diagnostic application.

12 Read out and delete all control unit fault memories.

13 Exit the diagnostic application. Switch off ignition. Disconnect **P90999 - PIWIS Tester 4** from the vehicle.

14 Switch off and disconnect the battery charger.  
⇒ *Workshop Manual '270689 Charging battery/vehicle electrical system'*



Center seat belt mount

**Labor position and PCSS encryption**

Labor position:

APOS	Labor operation	I No.
92544900	Reworking windscreen washer system hose (with side airbag)	
92544901	Reworking windscreen washer system hose (without side airbag)	

PCSS encryption:

Location (FES5)	92540	Washer system hose
Damage type (SA4)	5011	Leaking water

**Important Notice:** Technical Bulletins issued by Porsche Cars North America, Inc. are intended only for use by professional automotive technicians who have attended Porsche service training courses. They are written to inform those technicians of conditions that may occur on some Porsche vehicles, or to provide information that could assist in the proper servicing of a vehicle. Porsche special tools may be necessary in order to perform certain operations identified in these bulletins. Use of tools and procedures other than those Porsche recommends in these bulletins may be detrimental to the safe operation of your vehicle, and may endanger the people working on it. Properly trained Porsche technicians have the equipment, tools, safety instructions, and know-how to do the job properly and safely. Part numbers listed in these bulletins are for reference only. The work procedures updated electronically in the Porsche PIWIS diagnostic and testing device take precedence and, in the event of a discrepancy, the work procedures in the PIWIS Tester are the ones that must be followed.

© 2024 Porsche Cars North America, Inc.