



TECHNICAL SERVICE BULLETIN

Classification: DA24-002	Reference: NTB24-037	Date: July 17, 2024
-----------------------------	-------------------------	------------------------

FALSE ACTIVATION OF AEB OR FCW

APPLIED VEHICLES: 2019-2024 Murano (Z52)
APPLIED SYSTEMS: Automatic Emergency Braking/Forward Collision Warning

IF YOU CONFIRM

The customer states they have experienced false activation and/or unexpected braking of the Automatic Emergency Braking (AEB) or Forward Collision Warning (FCW) system,

AND

There are no related DTCs stored.

ACTION

Refer to the **SERVICE PROCEDURE** in this bulletin to:

1. Confirm the current ICC/ADAS 2 part number.
2. Reprogram the ICC/ADAS 2, if applicable.

IMPORTANT: The purpose of **ACTION** (above) is to give you a quick idea of the work you will be performing. You **MUST** closely follow the entire **SERVICE PROCEDURE** as it contains information that is essential to successfully completing this repair.

Bulletins are intended for use by qualified technicians, not 'do-it-yourselfers'. Qualified technicians are properly trained individuals who have the equipment, tools, safety instruction, and know-how to do a job properly and safely. **NOTE:** If you believe that a described condition may apply to a particular vehicle, **DO NOT** assume that it does. See your Nissan dealer to determine if this applies to your vehicle.

SERVICE PROCEDURE

Determine Vehicle Version Type

1. Using the VIN in the EPC, search 284P1.

IMPORTANT: Some vehicles in the **APPLIED VEHICLES** list will have multiple vehicle version types.

- If the vehicle has multiple version types, there will be a **Spec. Codes** column present in EPC. The vehicle version type will be listed in the **Spec. Codes** column.
 - YEAR1 = ver.1
 - YEAR2 = ver.2

HINT: Write down the vehicle version type as it will be used in step 14 on page 7.

The screenshot shows the Nissan EPC interface. The search results table has the following columns: Part Code, Number, Description, Applicability, Spec. Codes, Qty, I/C, From, To, and Retail. The 'Spec. Codes' column for the first result is highlighted in green and contains the value 'YEAR2'.

Part Code	Number	Description	Applicability	Spec. Codes	Qty	I/C	From	To	Retail
284P1	284P1-9UHZE	CONTROLLER ASSY - WARNING SPEAKER	*W.(SV+SL+PLATINUM)	YEAR2	1	0	12/2019	11/2020	\$ 607.62

- If the vehicle does not have multiple version types, the **Spec. Codes** column will not be present in EPC.

The screenshot shows the Nissan EPC interface. The search results table has the following columns: Part Code, Number, Description, Applicability, Qty, I/C, From, To, and Retail. The 'Spec. Codes' column is not present in this view.

Part Code	Number	Description	Applicability	Qty	I/C	From	To	Retail
284P1	284P1-9UH5B	CONTROLLER ASSY - WARNING SPEAKER	W	1		08/2023		\$ 709.71

Reprogram the ICC/ADAS 2

IMPORTANT: Before starting, make sure:

- ASSIST on the CONSULT PC has been synchronized (updated) to the current date.
- All CONSULT-III plus software updates (if any) have been installed.
- If using the VI3, close C-III plus or C-4 and run the VI Manager and ensure the latest software is installed prior to reprogramming.
- During the reprogramming process, you may receive some errors. These errors are expected. Please follow all of the steps in this procedure to successfully complete the reprogramming process.

NOTICE

- Connect a battery maintainer or smart charger set to reflash mode or a similar setting. If the vehicle battery voltage drops below 12.0V or rises above 13.5V during reprogramming, the ICC/ADAS 2 control module may be damaged.
 - Be sure to turn OFF all vehicle electrical loads. If a vehicle electrical load remains ON, the ICC/ADAS 2 control module may be damaged.
 - Be sure to connect the AC Adapter. If the CONSULT PC battery voltage drops during reprogramming, the process will be interrupted and the ICC/ADAS 2 control module may be damaged.
 - Turn OFF all external Bluetooth® devices (e.g., cell phones, printers, etc.) within range of the CONSULT PC and the VI. If Bluetooth® signal waves are within range of the CONSULT PC or VI during reprogramming, reprogramming may be interrupted and the ICC/ADAS 2 control module may be damaged.
2. Connect the Vehicle Interface (VI) to the vehicle.
 - Make sure to use the correct VI for the CONSULT PC.
 3. Turn the ignition ON with the engine OFF.
 4. Turn ON the hazard warning lamps.
 5. Start C-III plus.
 6. If prompted, select **USA/CANADA Dealers** from the drop down menu, and then select **OK**.
 7. Login using your NNAnet credentials.

IMPORTANT: If not prompted to enter your username and password, the CONSULT PC may not be connected to Wi-Fi. Close C-III plus, confirm the CONSULT PC is connected to Wi-Fi, and then reopen C-III plus.

8. Wait for the VI to be recognized.
 - The serial number will display when the VI is recognized (Figure 1).
9. Select **Diagnosis (All Systems)**.

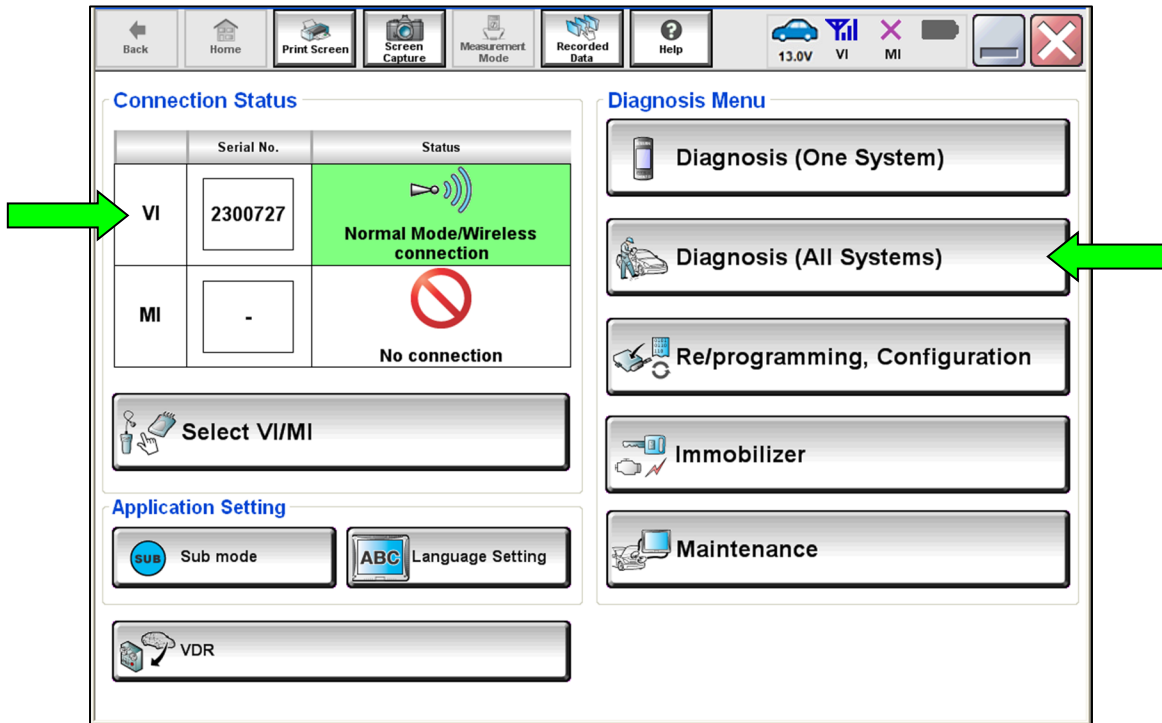


Figure 1

10. Select **ERASE**.

IMPORTANT: If any DTCs are still present after performing **ERASE**, refer to the ESM for further diagnostic information prior to performing this TSB.

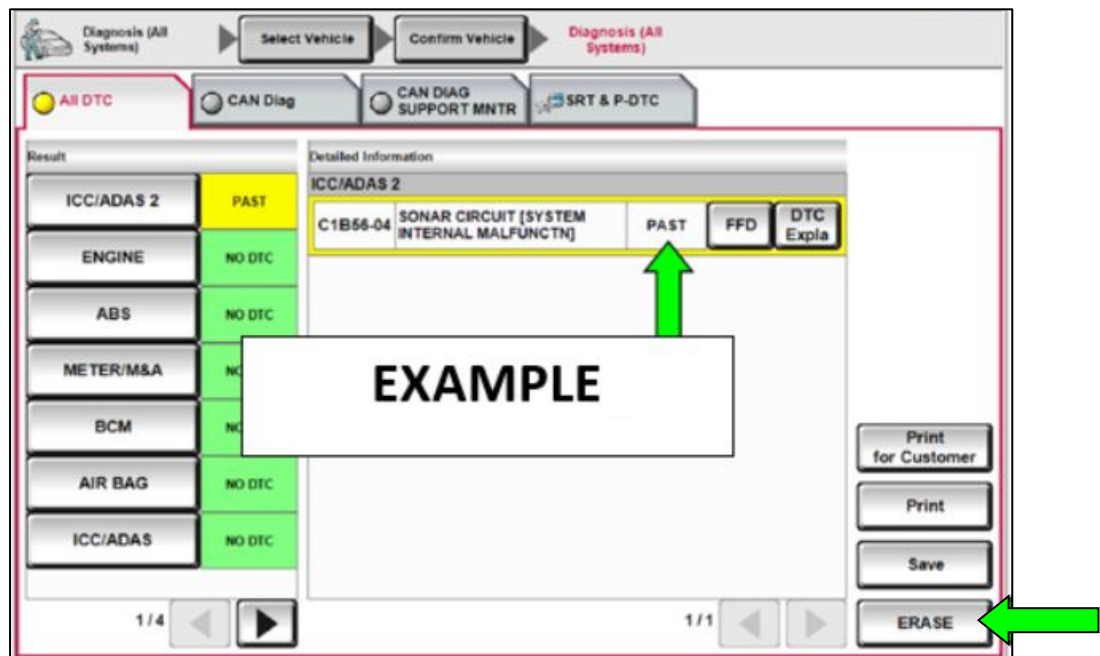


Figure 2

11. Select **Re/programming, Configuration**.

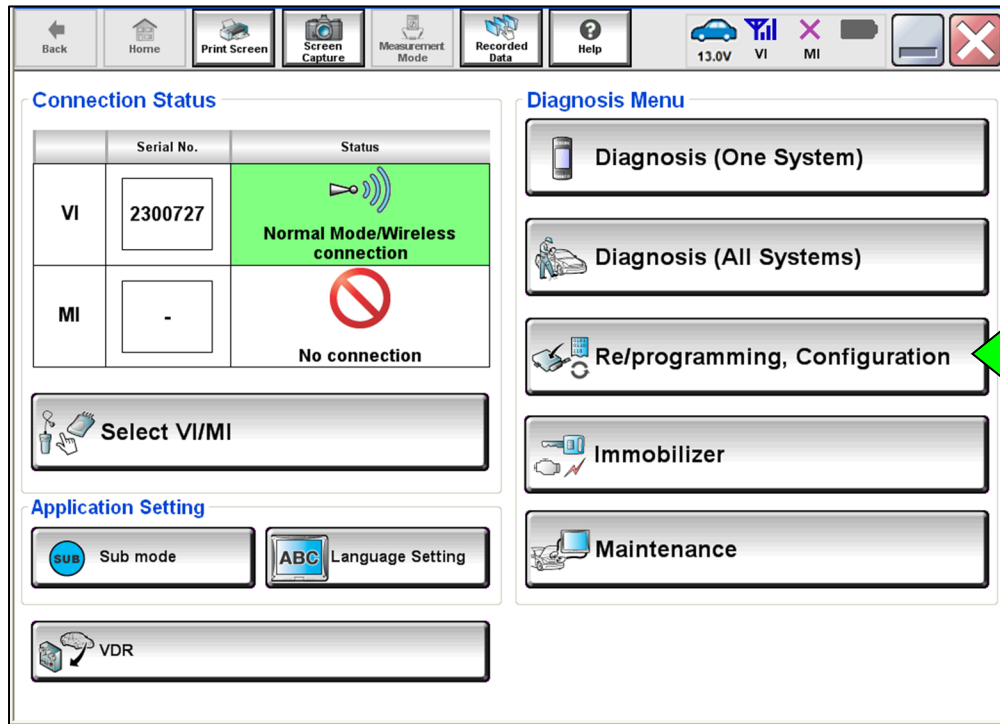


Figure 3

12. Check the box to confirm the precaution instructions have been read, and then select **Next**.

HINT: Use the arrows (if needed) to view and read all precautions.

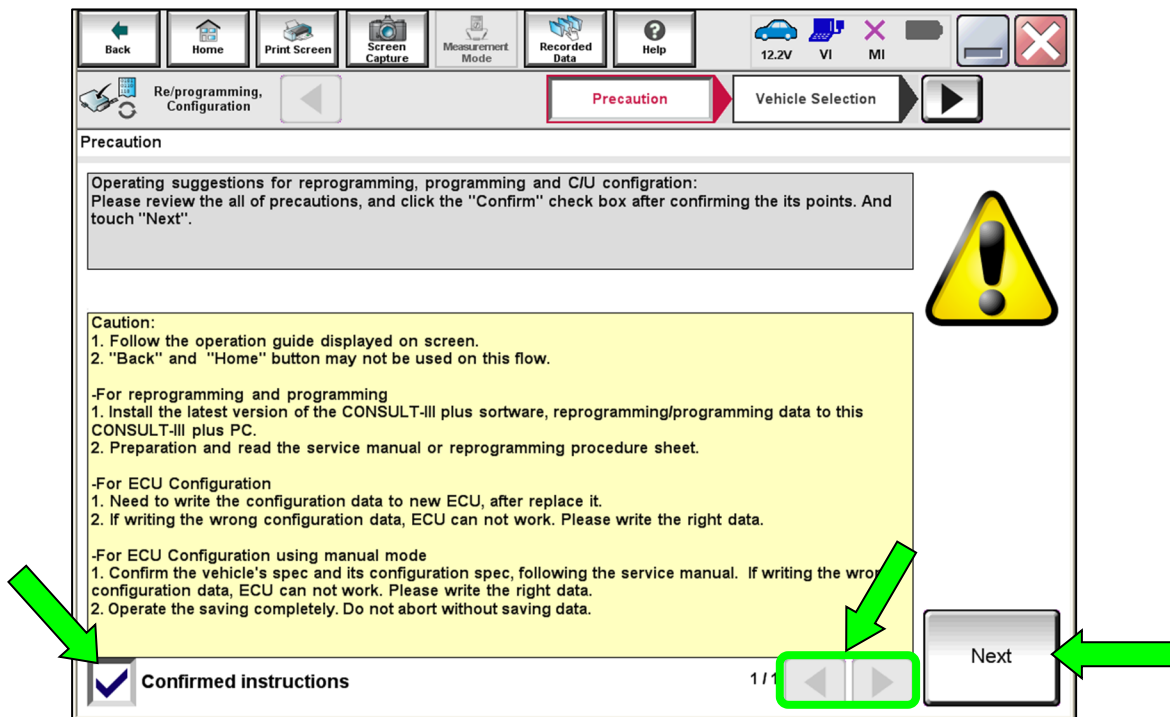


Figure 4

IMPORTANT: Step 14 only applies if the vehicle has multiple version types as determined in step 1 on page 2. If the vehicle does not have multiple version types, skip to step 15 on page 8.

14. Select the vehicle version type that was determined in step 1 on page 2, and then select **OK**.

NOTICE

To avoid damage to the ICC/ADAS 2 control module, the correct vehicle version type must be selected.

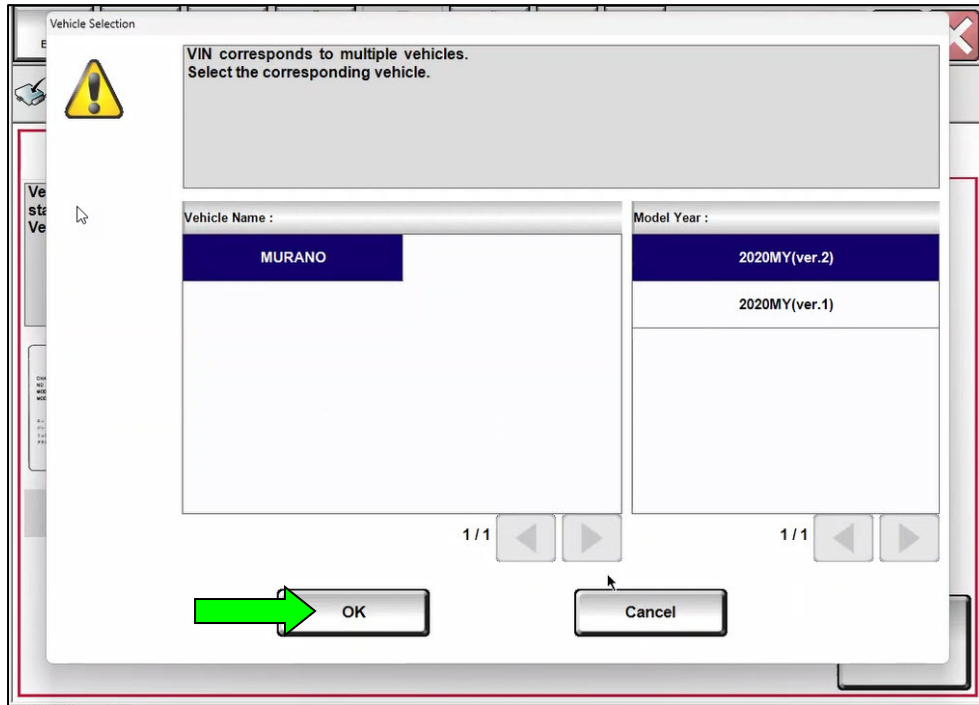


Figure 6

- Confirm the **VIN or Chassis #** is correct, and then select **Confirm**.

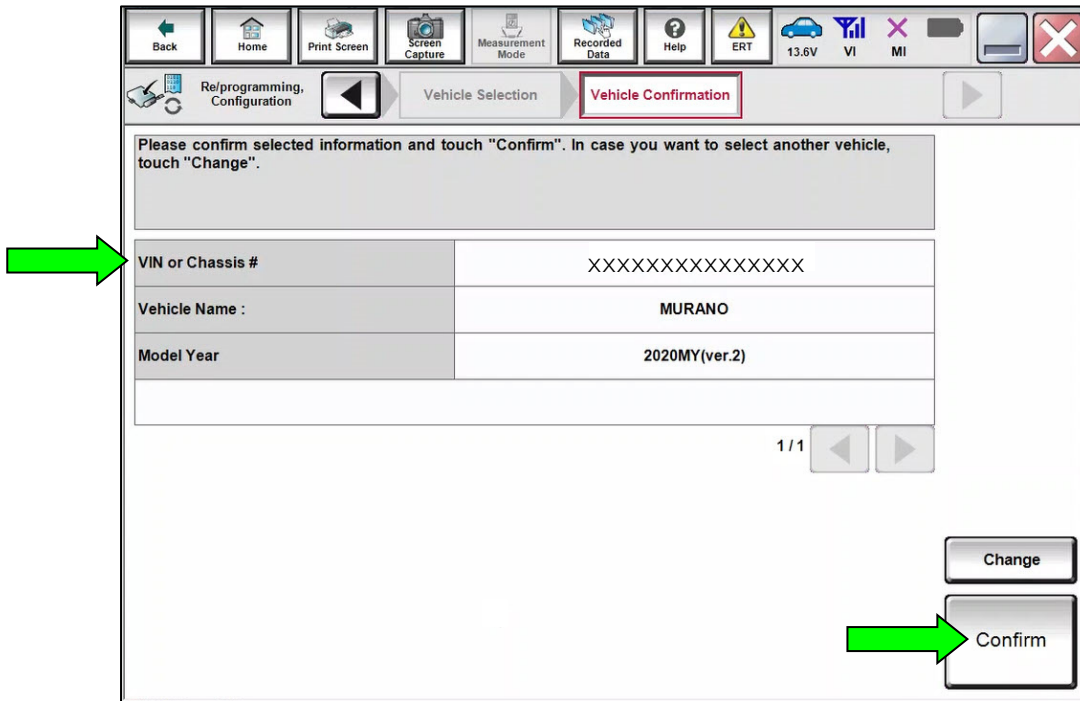


Figure 7

- Confirm the **VIN** is correct for the vehicle, and then select **Confirm**.

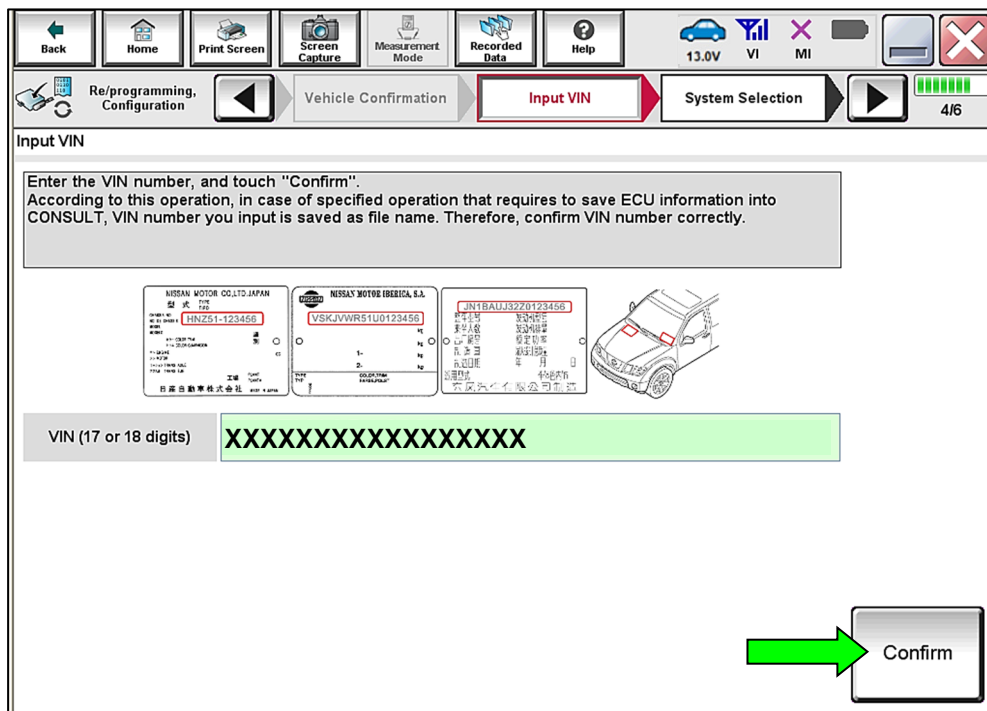


Figure 8

17. Select **ICC/ADAS 2**.

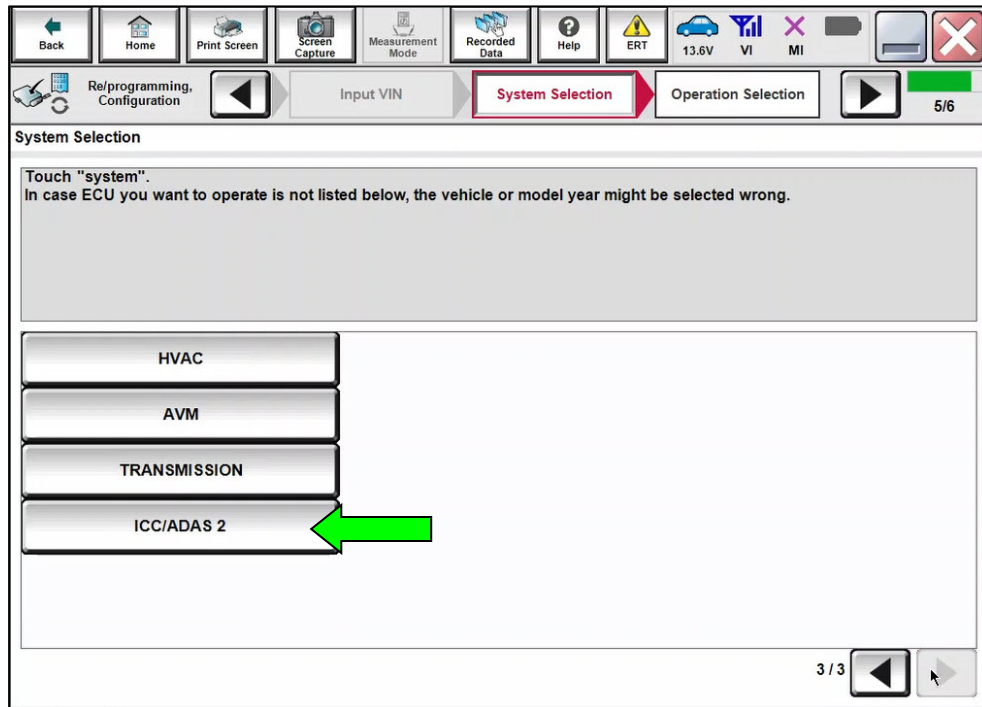


Figure 9

18. Select **Reprogramming**.

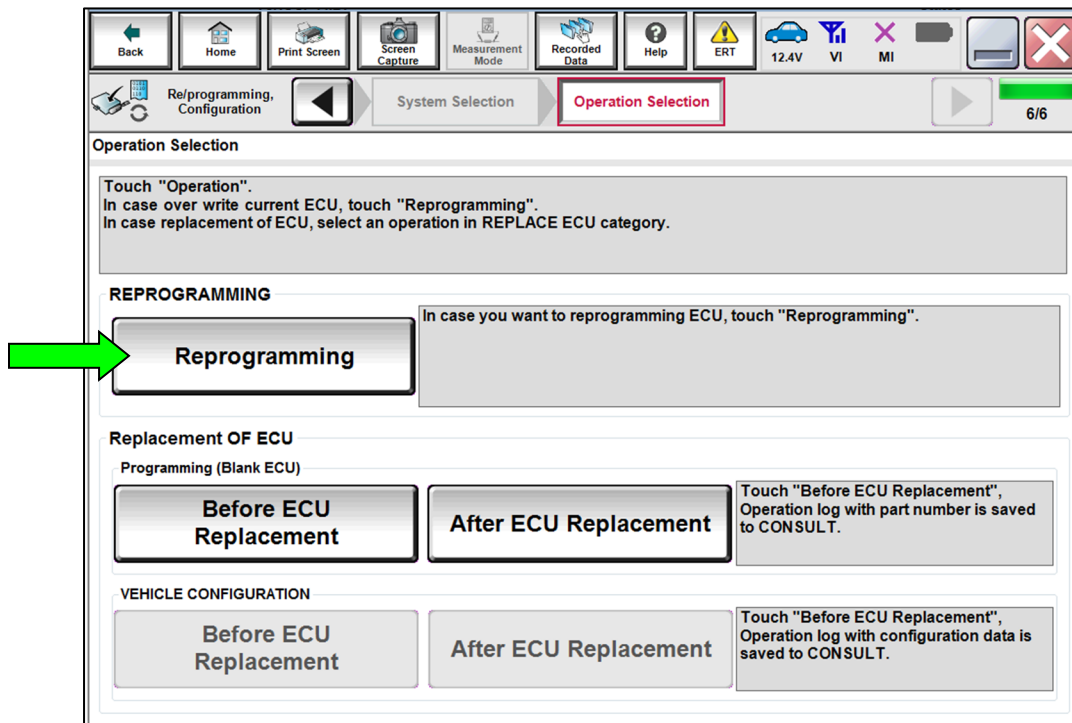


Figure 10

19. Find the **ICC/ADAS 2 Part Number** and write it on the repair order, and then select **Save**.

HINT: This is the current Part Number (P/N).

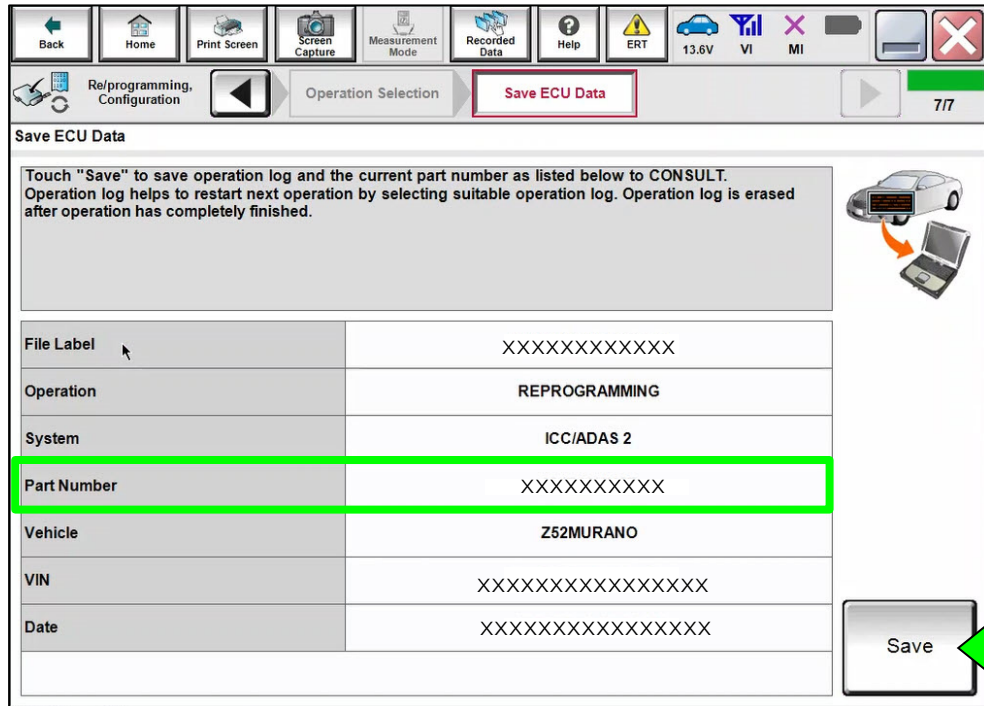


Figure 11

20. Compare the Part Number you wrote down in step 19 to the numbers in the **CURRENT ICC/ADAS 2 PART NUMBER** column in **Table A**.
- If there is a match in **Table A**, continue with the reprogramming procedure.
 - If there is not a match, in **Table A**, this bulletin does not apply. See the ESM (Electronic Service Manual) for further diagnostic information.

Table A

CURRENT ICC/ADAS 2 PART NUMBER: 284P1-
9UF2E
9UH2E
9UH3D
9UH4A, 9UH4B
9UH5A, 9UH5B

21. Check the box to confirm the precaution instructions have been read, and then select **Next**.

HINT: Use the arrows (if needed) to view and read all precautions.

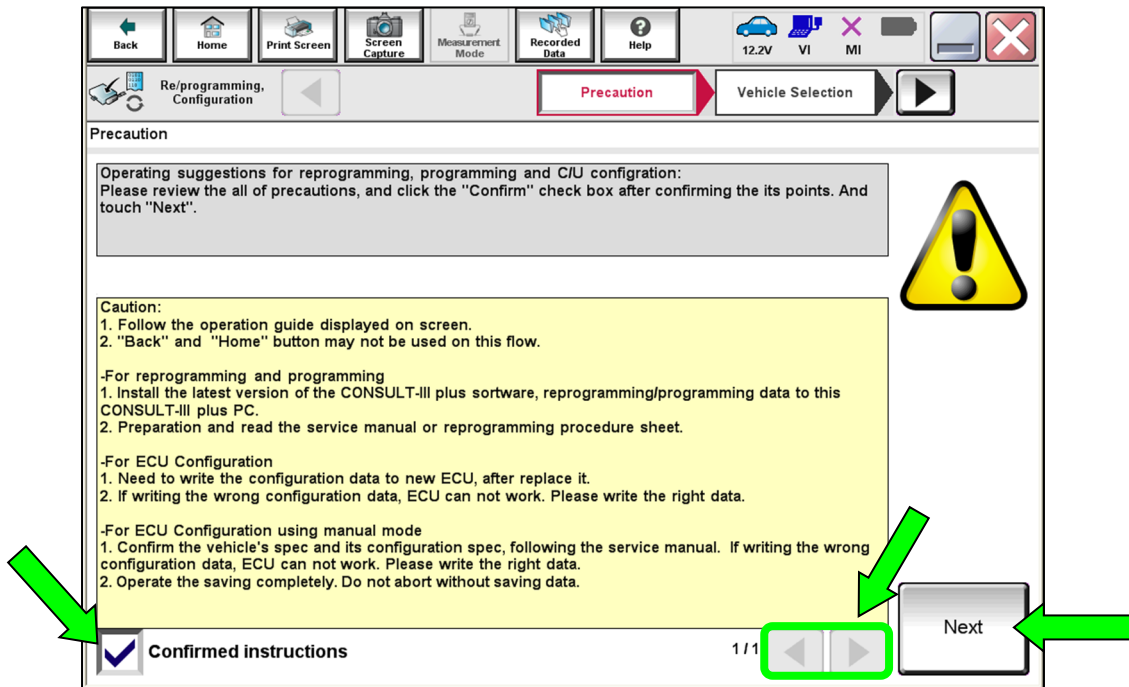


Figure 12

22. Select the reprogramming data, and then select **Next**.

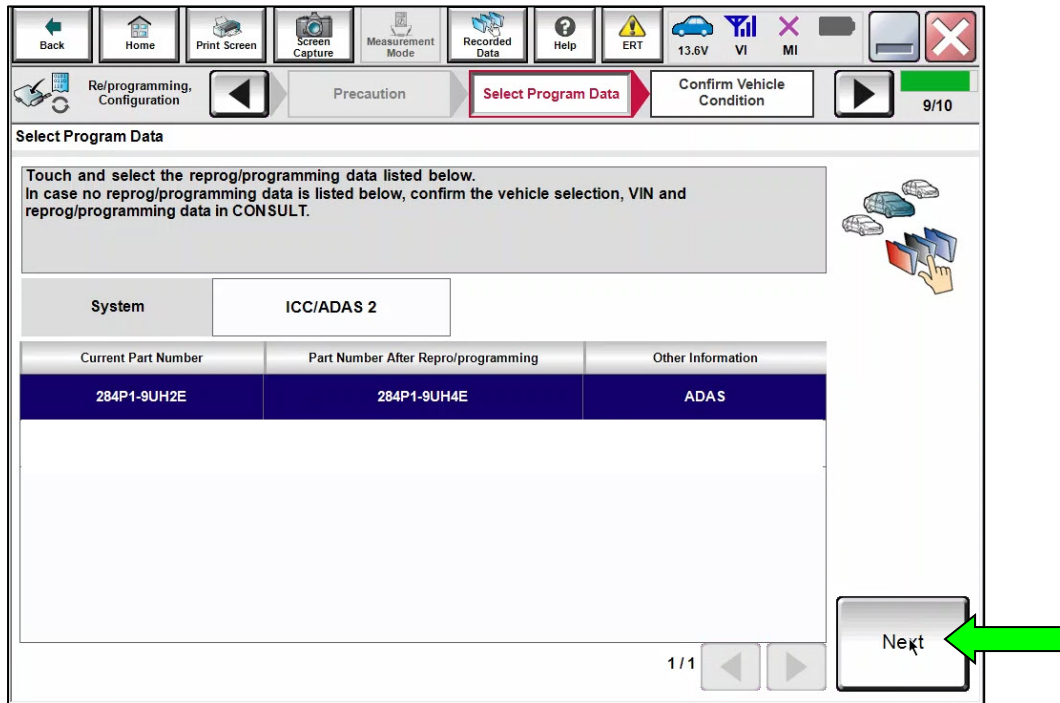


Figure 13

- If there are two (2) selections for the reprogramming data, select the top option, and then select **Next**.

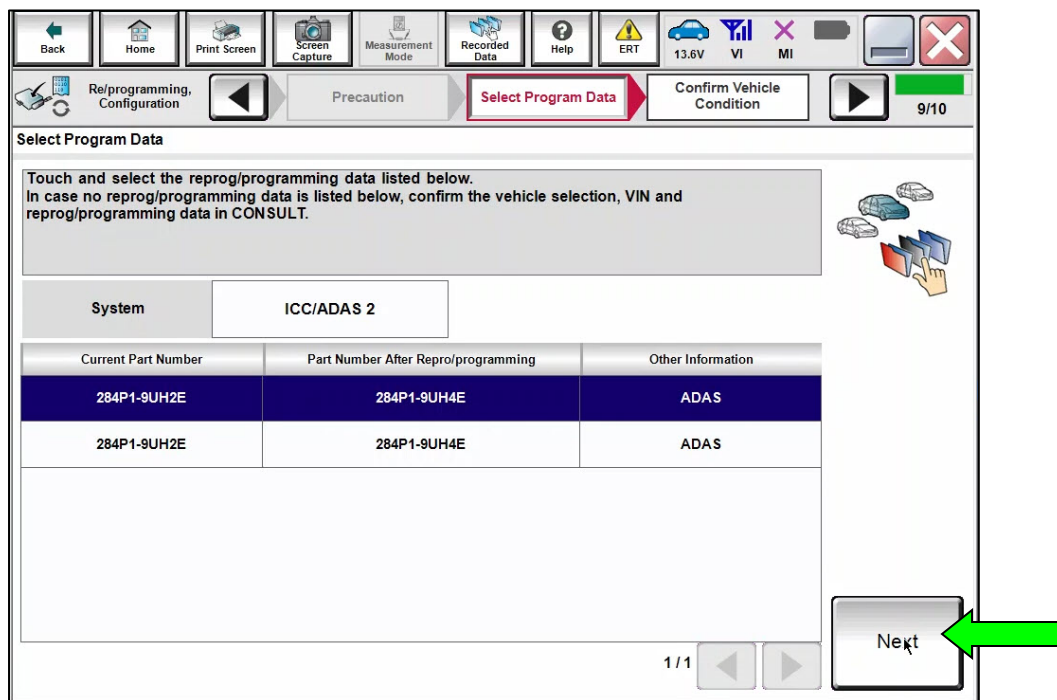


Figure 14

23. Confirm the **Current Part Number** and the **Part Number AfterRepro/programming** are different, and then select **Next**.

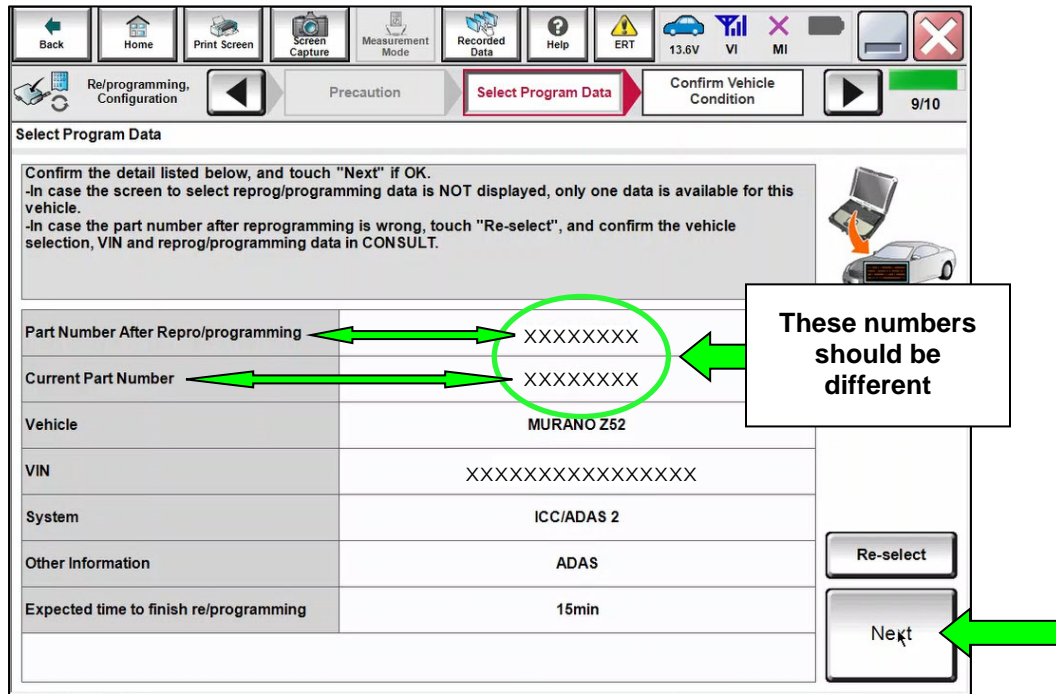


Figure 15

24. Make sure **OK** is highlighted **green** (battery voltage must be between **12.0** and **13.5 volts**), and then select **Next**.

NOTICE

To avoid damage to the control unit, ensure a battery maintainer or smart charger is connected. The battery voltage must be between 12.0V and 13.5V during reprogramming.

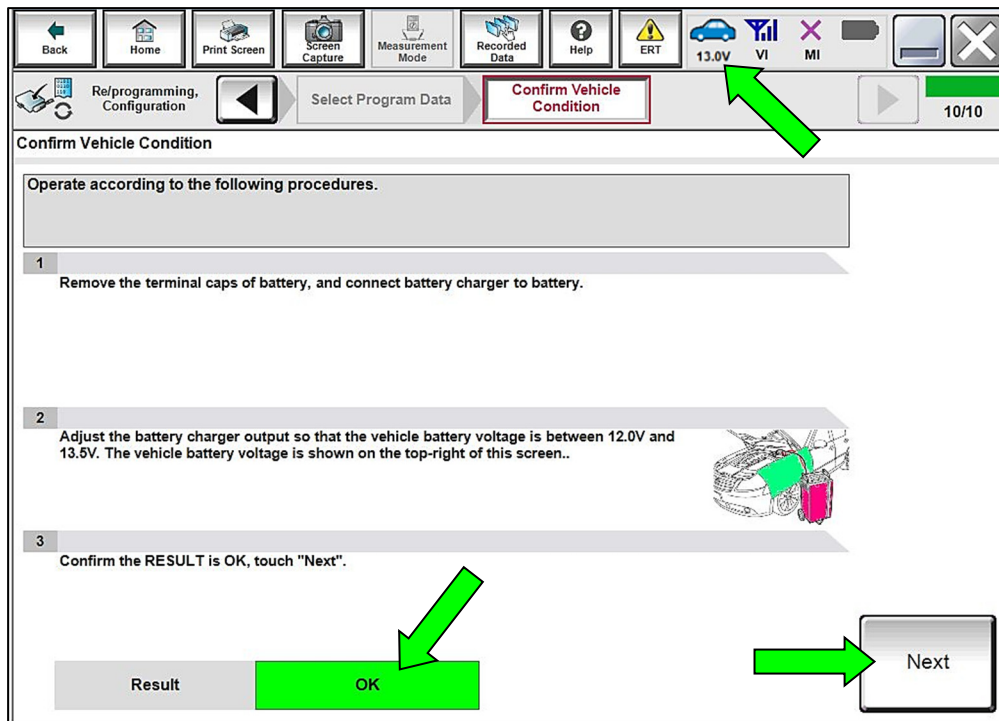


Figure 16

25. Confirm the **Judgement** for all the **Monitor Items** are “OK”, and then select **Start**.

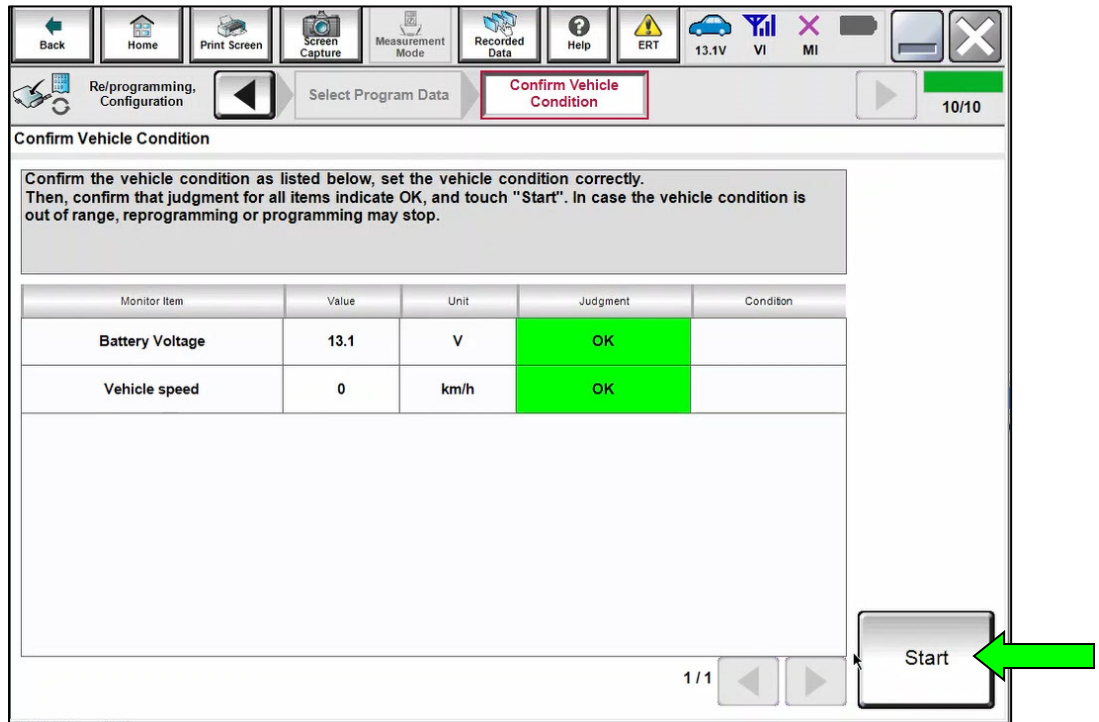


Figure 17

26. Allow **Transfer Data** to complete.

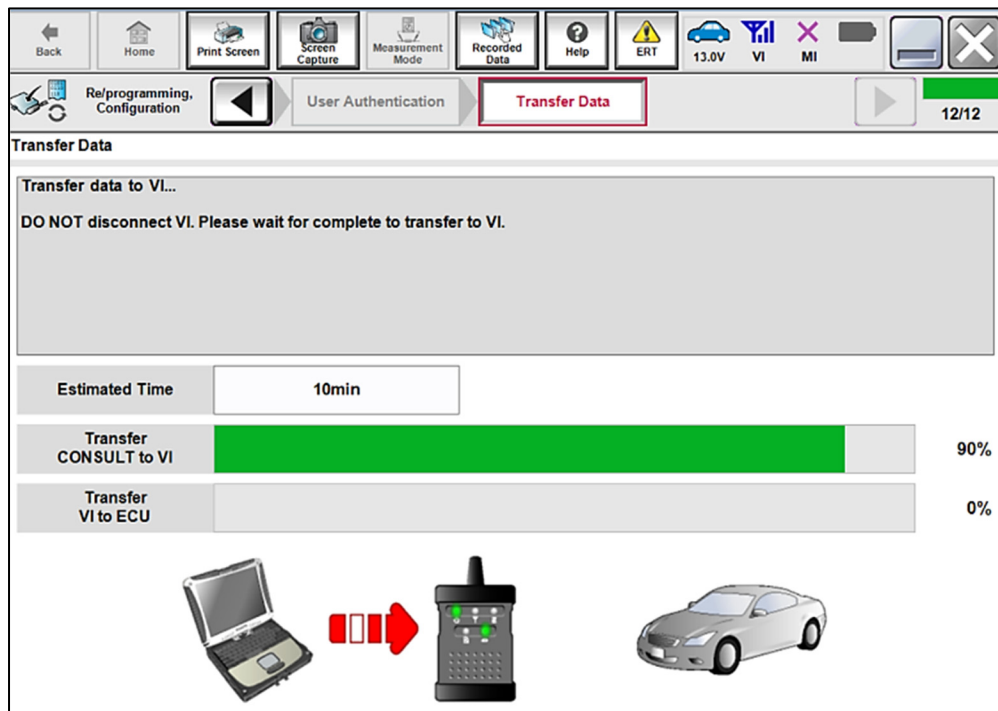


Figure 18

27. Once the reprogramming completes, select **Next**.

HINT:

- If the screen in Figure 19 does not display (indicating that reprogramming did not complete), refer to the information on the next page.
- Additional steps/operations are required before CONSULT will provide the final reprogramming confirmation report. Continue with the reprogramming procedure on page 17.

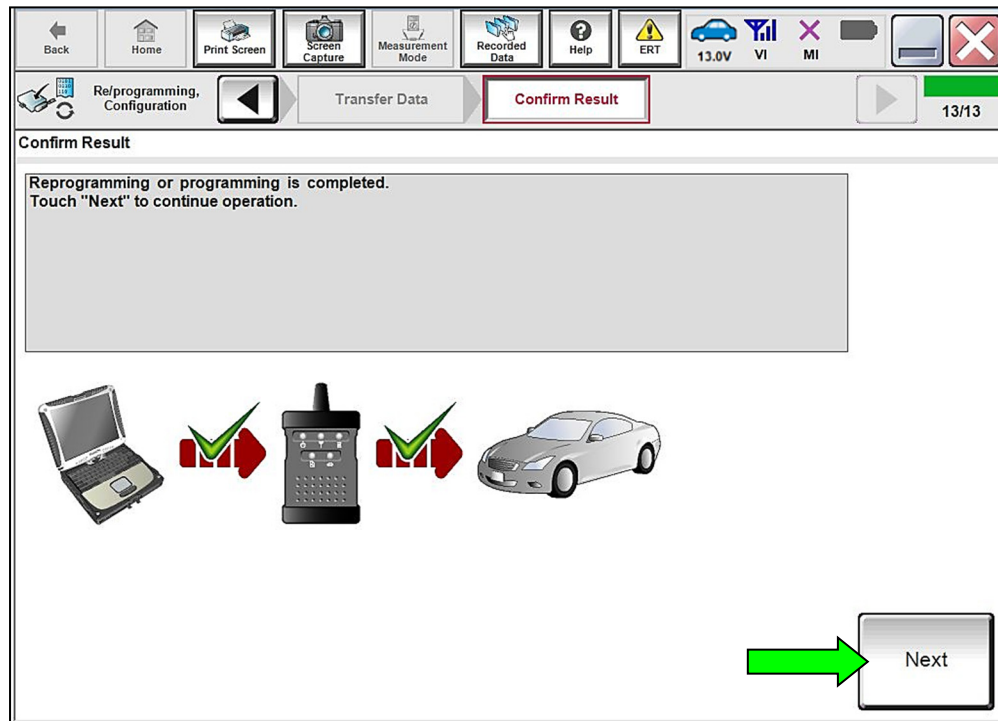


Figure 19

ICC/ADAS 2 Control Module Recovery

Do not disconnect the VI or shut down CONSULT if reprogramming does not complete.

If reprogramming does not complete and the “!?” icon displays, as shown in Figure 20:

- Check battery voltage (12.0 - 13.5 V).
- Ignition is ON, engine OFF.
- External Bluetooth® devices are OFF.
- **All** electrical loads are OFF.
- Select **Retry** and follow the on screen instructions.
- **Retry may not go through on first attempt and can be selected more than once.**

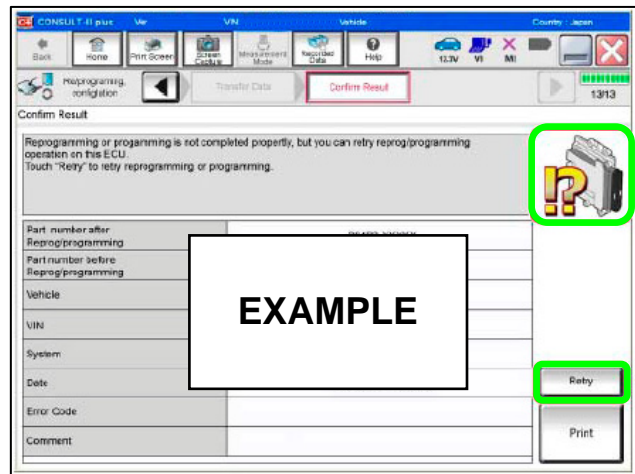


Figure 20

If reprogramming does not complete and the “X” icon displays, as shown in Figure 21:

- Check battery voltage (12.0 - 13.5 V).
- CONSULT A/C adapter is plugged in.
- Ignition is ON, engine OFF.
- Transmission is in Park.
- All CONSULT VI cables are securely connected.
- All C-III plus updates are installed.
- Select **Home**, and restart the reprogram procedure from the beginning.

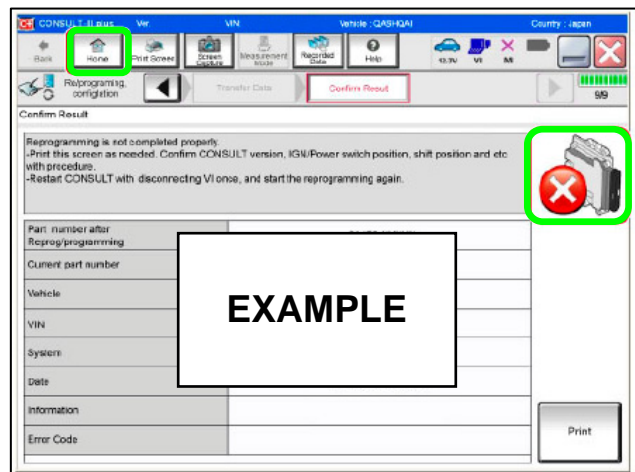


Figure 21

28. Perform **Erase All DTCs**.

a. Follow the on-screen instructions as shown in Figure 22 and Figure 23.

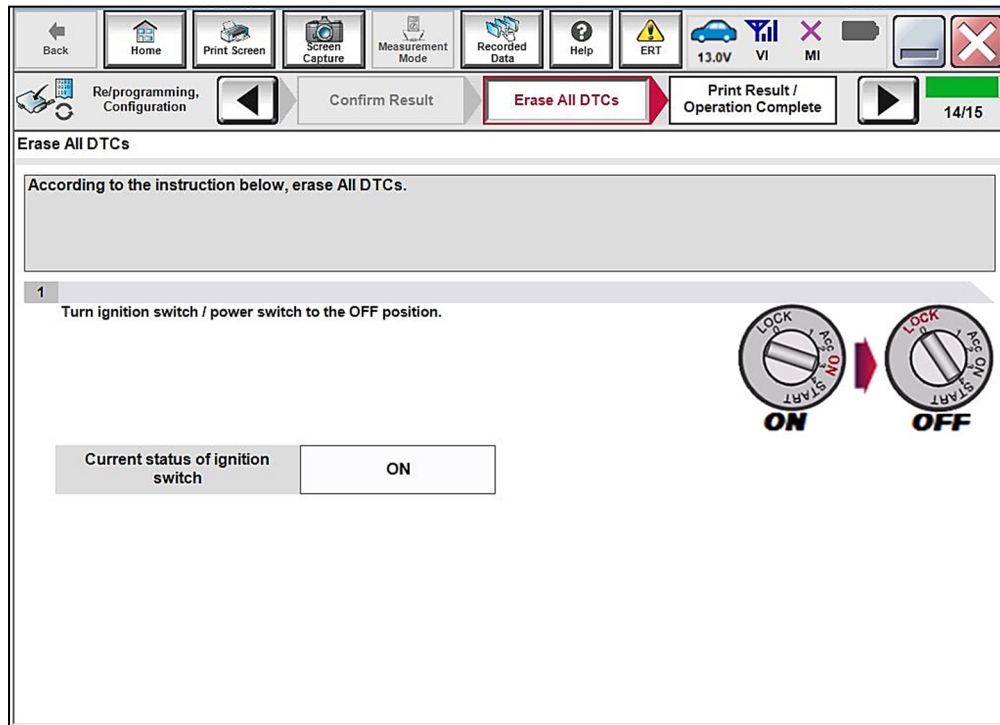


Figure 22

b. Select **Next**.

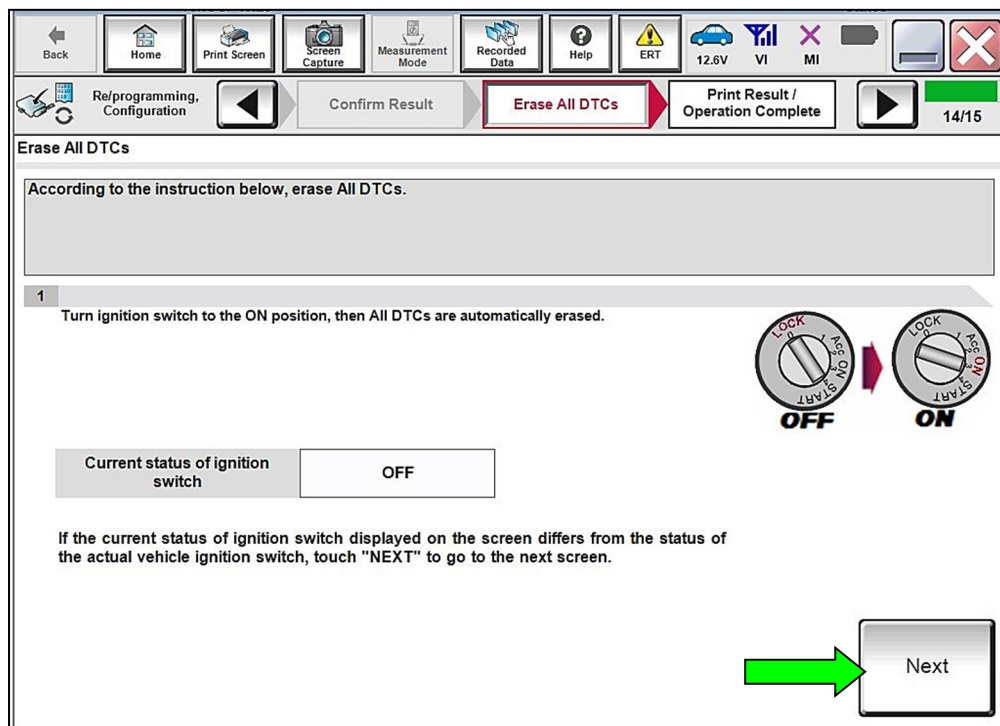


Figure 23

HINT: When the entire reprogramming process is complete, the screen in Figure 24 will display.

29. Verify the before and after part numbers are different.

30. Print a copy of the screen below (Figure 24) and attach it to the repair order for warranty documentation.

HINT: If you cannot print the screen:

a. Select **Screen Capture**.

b. Name the file.

c. Save the file in My Documents.

➤ A copy of the screen is now saved in the CONSULT PC. It can be retrieved and printed at a later time.

31. Select **Confirm**.

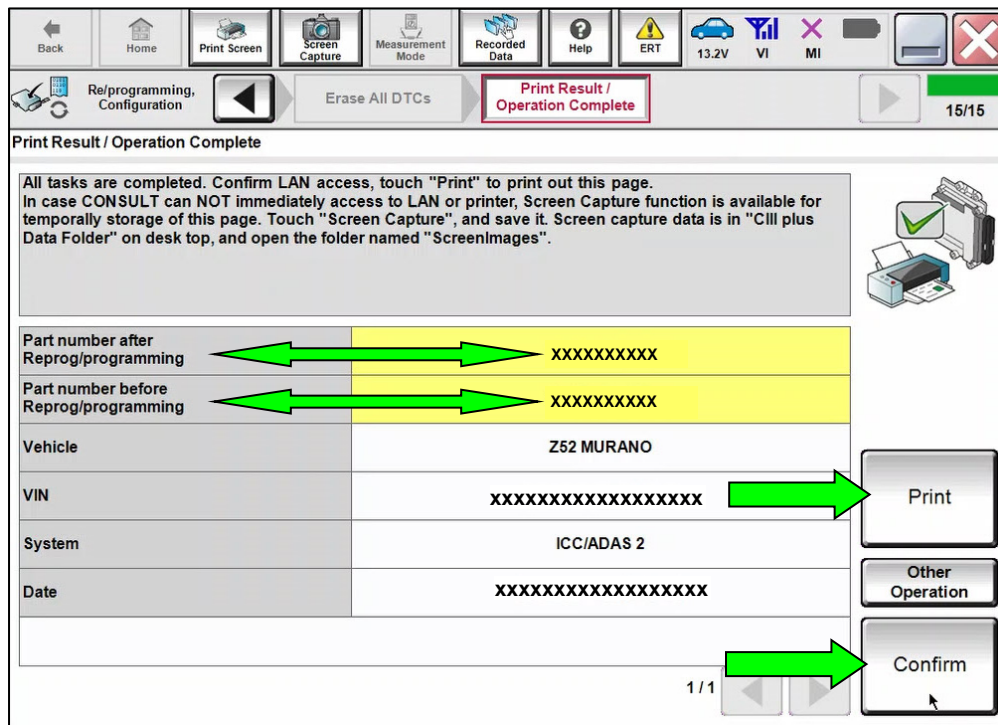


Figure 24

CLAIMS INFORMATION

Submit a Primary Part (PP) type line claim using the following claims coding:

DESCRIPTION	PFP	OP CODE	SYM	DIA	FRT
Perform Software Check ICC/ADAS 2	(1)	RXE8AA	ZE	32	0.4

- (1) Refer to the electronic parts catalog and use the Warning Speaker Controller ASSY (284P1-*****) part number as the Primary Failed Part (PFP).

OR

DESCRIPTION	PFP	OP CODE	SYM	DIA	FRT
Perform Software Check & Update ICC/ASAD2	(1)	RXE9AA	ZE	32	0.7

- (1) Refer to the electronic parts catalog and use the Warning Speaker Controller ASSY (284P1-*****) part number as the Primary Failed Part (PFP).

HINT: FRT allows adequate time to access DTC codes. No other diagnostic procedures subsequently required. Do NOT claim any Diagnostic Op Codes with this claim.

AMENDMENT HISTORY

PUBLISHED DATE	REFERENCE	DESCRIPTION
July 17, 2024	NTB24-037	Original bulletin published

