



# TECHNICAL SERVICE BULLETIN

Classification: AN22-026B	Reference: NTB22-103B	Date: August 15, 2024
------------------------------	--------------------------	--------------------------

## INFOTAINMENT CONTROL UNIT REPLACEMENT SERVICE INFORMATION

**This bulletin has been amended. See AMENDMENT HISTORY on the last page.  
Please discard previous versions of this bulletin.**

- APPLIED VEHICLES:**
- 2021-2024 Armada (Y62)
  - 2022-2024 Frontier (D41) – Pro-X and Pro-4X
  - 2022-2024 Pathfinder (R53)
  - 2021-2023 Rogue (T33)
  - 2020-2024 Titan (A61)
  - 2023-2024 Z (Z34)

### SERVICE INFORMATION

When replacing an AV Control Unit (Infotainment Control Unit), for any reason, all three steps below are required. If all three steps are not completed on vehicles equipped with a TCU, the Over The Air (OTA) updates will not work, and other functions may be inoperative.

**HINT:** Not all **APPLIED VEHICLES** are OTA-update capable.

1. Reprogram the AV Control Unit following the procedure in the ESM.
2. Configure the AV Control Unit following the procedure in the ESM.
3. Write the VIN to the AV Control Unit following the procedure in the ESM along with the supplemental information in this bulletin.

**IMPORTANT:** Steps 1-3 above must be performed in the sequential order shown below.

### ORDER OF COMPLETION



Bulletins are intended for use by qualified technicians, not 'do-it-yourselfers'. Qualified technicians are properly trained individuals who have the equipment, tools, safety instruction, and know-how to do a job properly and safely. **NOTE:** If you believe that a described condition may apply to a particular vehicle, DO NOT assume that it does. See your Nissan dealer to determine if this applies to your vehicle.

## SUPPLEMENTAL INFORMATION FOR WRITING THE VIN TO THE AV CONTROL UNIT

**IMPORTANT:** On vehicles equipped with a TCU, Writing the VIN to the AV Control Unit has to be performed correctly for the vehicle to receive OTA software updates.

**HINT:** When writing the VIN to the AV Control Unit, use the C-III plus “Help” button for detailed information.

- **Help > All Information > VIN Writing to ECU**

### 1. Select **Diagnosis (One System)**.

- **Work Support** can also be accessed via **Diagnosis (All Systems)**. Use the C-III plus “Help” button for detailed information.

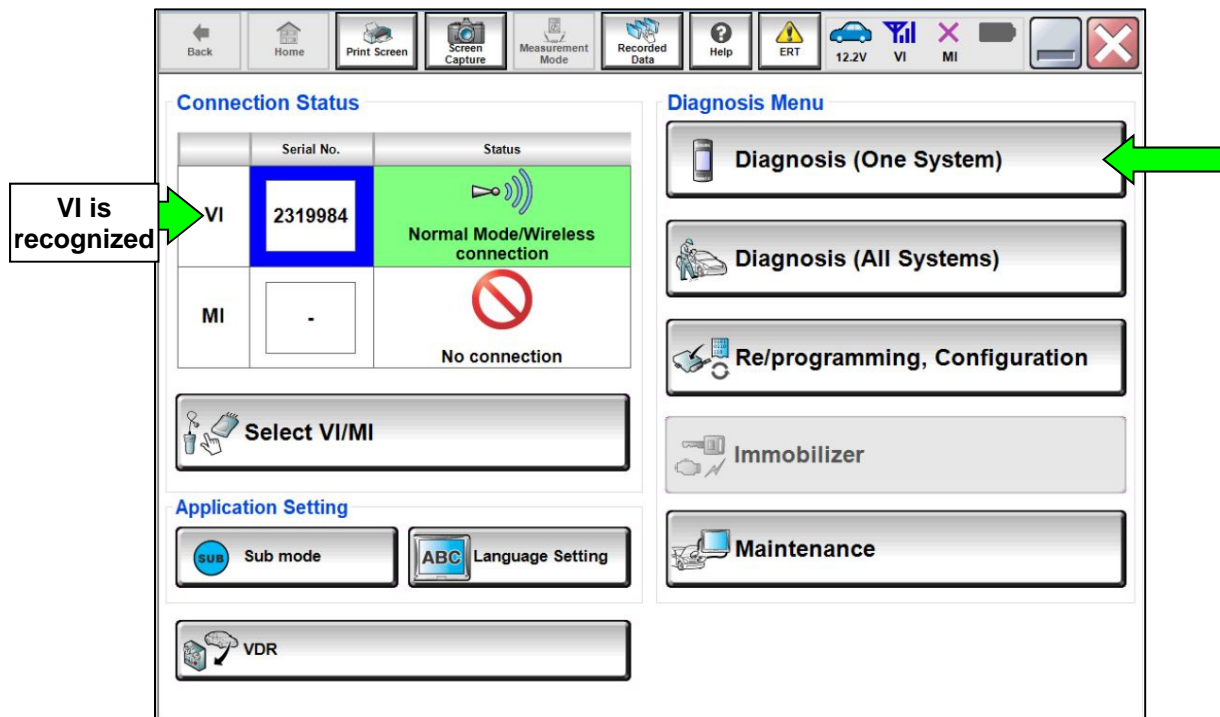


Figure 1

2. Select **MULTI AV**.

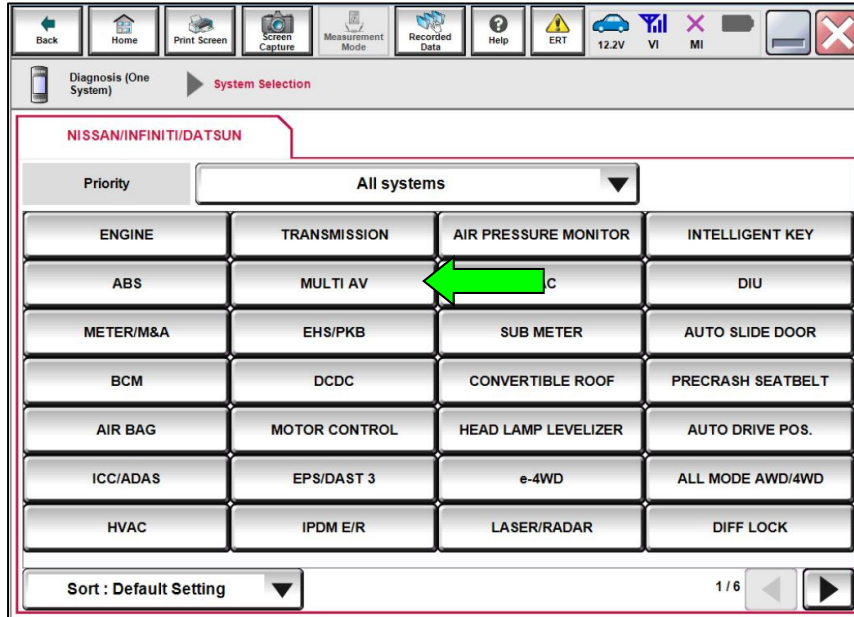


Figure 2

3. Select **Work support**.

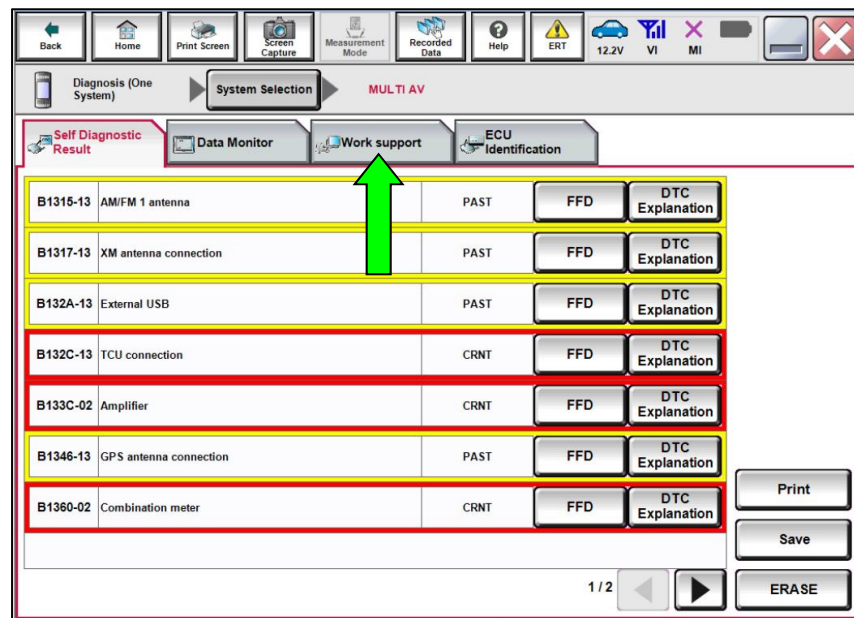


Figure 3

4. Utilize the **WRITE VIN** function per the ESM and/or C-III plus Help section.

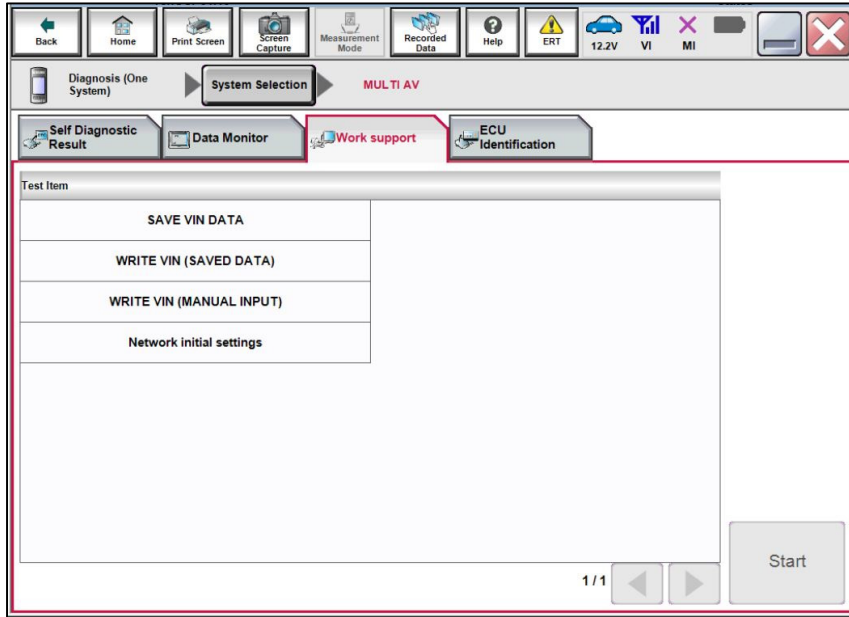


Figure 4

## AMENDMENT HISTORY

PUBLISHED DATE	REFERENCE	DESCRIPTION
December 8, 2022	NTB22-103	Original bulletin published
May 26, 2023	NTB22-103A	Changes made throughout
August 15, 2024	NTB22-103B	<b>APPLIED VEHICLES</b> revised