



# Service Bulletin

Bulletin No.: 24-NA-147

Date: August, 2024

## INFORMATION

**Subject: Information on Seat Belt Lap Anchor Inspection**

Brand:	Model:	Model Year:		VIN:		Engine:	Transmission:
		from	to	from	to		
Buick	Verano	2012	2017	—	—	All	All
	LaCrosse	2010	2016				
	Enclave	2009	2016				
	Encore	2013	2022				
Cadillac	XTS	2013	2019				
	Escalade Models	2015	2020				
Chevrolet	Cruze	2011	2016				
	Impala	2009	2016				
	Caprice	2011	2016				
	Malibu	2011	2016				
	Camaro	2016	2024				
	Silverado 1500 Silverado 2500/3500	2014	2019				
	Suburban	2015	2020				
	Tahoe Models	2015	2020				
	Traverse	2009	2016				
	Aveo	2012	2016				
	Sonic	2012	2016				
	Equinox	2010	2017				
Trax	2013	2022					
GMC	Sierra 1500 Sierra 2500/3500	2014	2019				
	Acadia	2009	2016				
	Yukon Models	2015	2020				
	Terrain	2010	2017				
Pontiac	G8	2008	2009				
Saturn	OUTLOOK	2009	2010				

<b>Involved Region or Country</b>	North America
<b>Condition</b>	Some customers may comment on a damaged or worn seat belt lap anchor.
<b>Cause</b>	The cause of the condition may be wear or damage.
<b>Correction</b>	Refer to the information below.

## Service Procedure

**Important: Service agents must comply with all International, Federal, State, Provincial, and/or Local laws applicable to the activities it performs under this bulletin, including but not limited to handling, deploying, preparing, classifying, packaging, marking, labeling, and shipping dangerous goods. In the event of a conflict between the procedures set forth in this bulletin and the laws that apply to your dealership, you must follow those applicable laws.**

Check the VIN's warranty coverage and any open recalls or special policies and complete any that are found. If there are no active recalls or special policies, repairs would be customer pay.

This is a reminder that GM recommends that the seat belt components of vehicles be inspected regularly. Regular inspections may help identify whether such components should be replaced.

The Owner's Manual provides Safety System Check information, to periodically check the seat belt reminder, seat belts, buckles, latch plates, retractors, shoulder belt height adjusters (if equipped), and seat belt anchorages to make sure they are all in working order.

When performing the Safety System Check, please refer to the below example images as guidance. While these are all photos of the outboard belt/pretensioner, similar conditions could exist on the inboard buckle assembly. The images shown are examples of varying designs. Damage can vary by seatbelt type.

If at any time, wear or damage is found during the Safety System Check, we suggest that the seatbelt component be replaced. Follow the Service Information repair procedure for the year, make and model of the customer car.

## Examples of Varying Damage

**Important:** Damage can vary by seatbelt type.



6693387



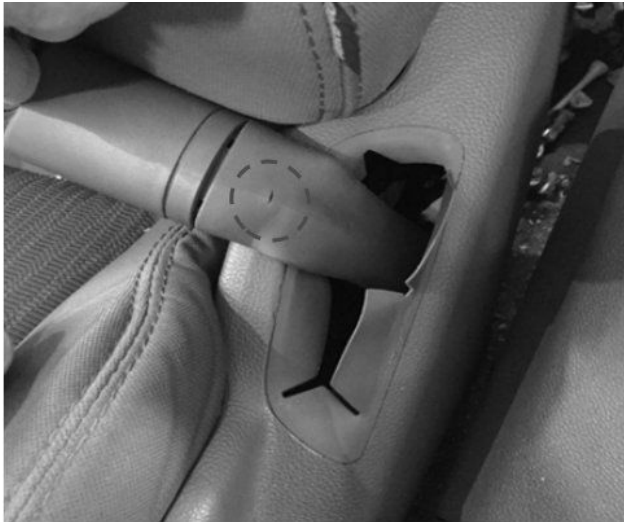
6693391



6693394



6693426



6693399



6693453

Version	1
Modified	Released August 05, 2024

