

- Notes:
1. View Is From The Inside.
 2. Framing Is 1 1/2" Unless Noted.
 3. Hatched Area To Be Stuffed w/Wood

East to West RV claims exclusive rights to the information documented herein. Manufacture of material shown in part or full is prohibited without the written consent from East to West RV.

TOLERANCES: UNLESS OTHERWISE STATED
 DIMS ARE IN INCHES
 .X = ± .1 FRACTIONS = ± 1/16
 .XX = ± .01 ANGLES = ± .1°

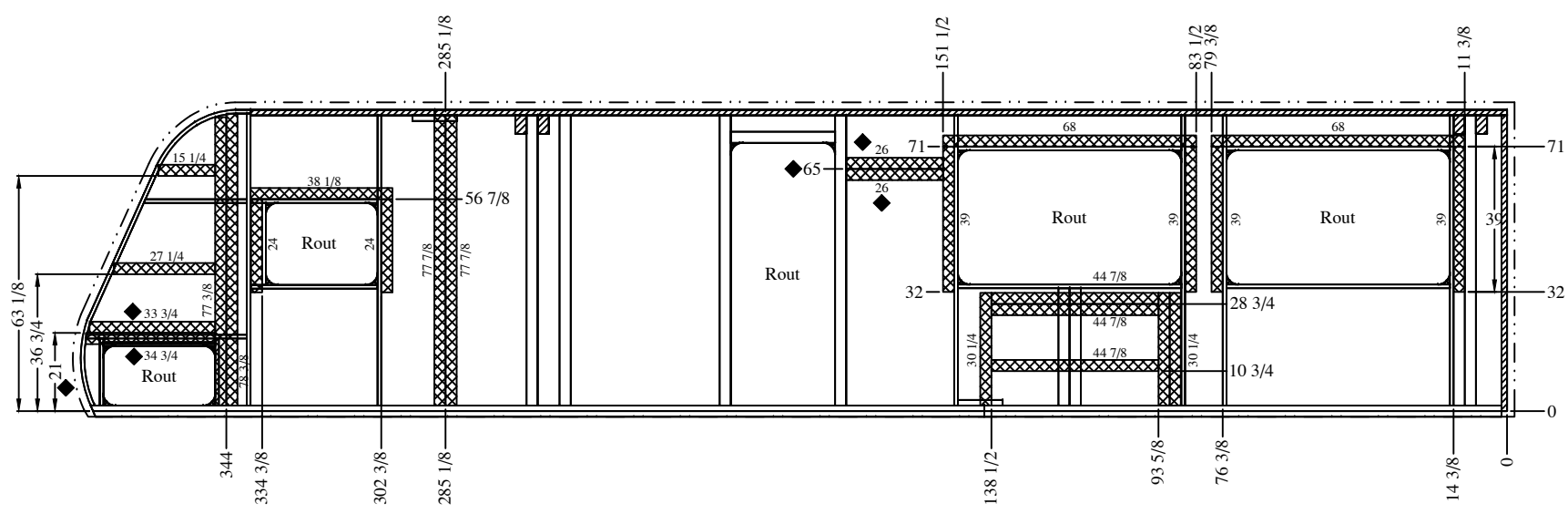
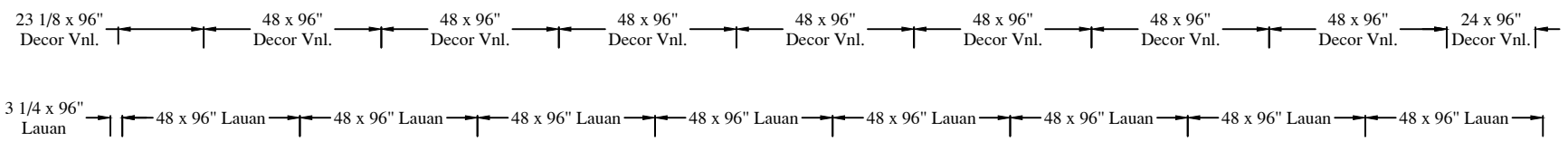
Rev	Description	Date	ECN#
A	Released For Production	08/22/23	--
B	Revised, Updated Awning, EGS Location & Window Size	10/20/23	--
C	Revised, Changed Front Cargo Door Was 24 x 14	02/21/24	--

Title: **Sidewall, Door Side Aluminum Framing**

Model Usage: **Longitude: 310RL**

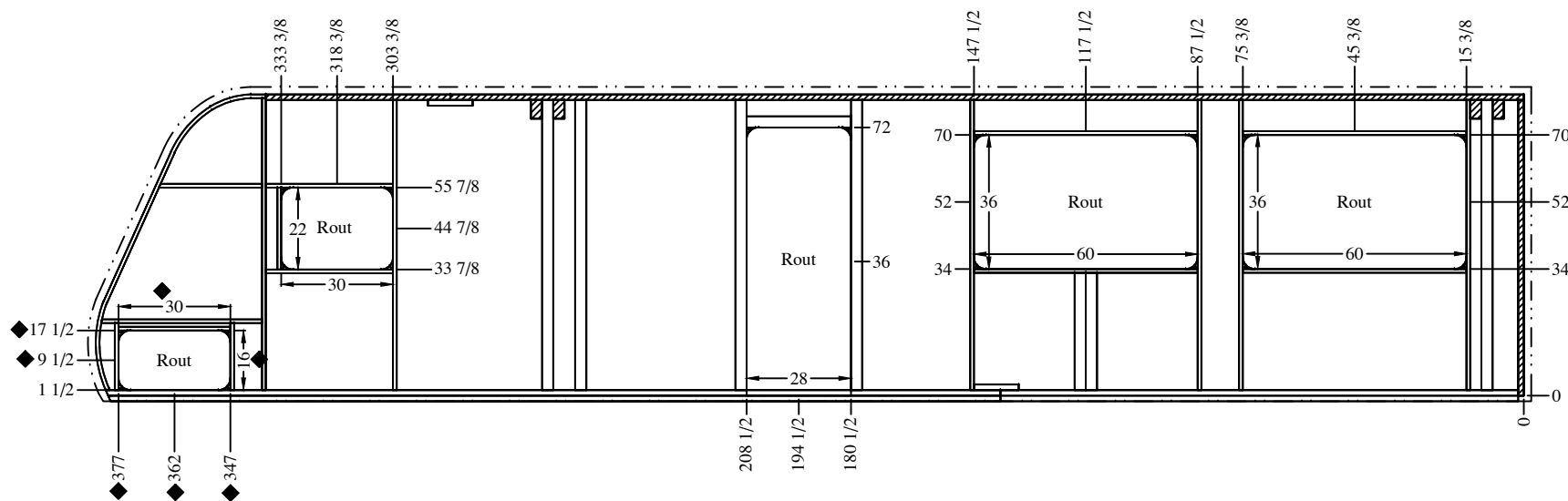
File No. _____

Date: 08/22/23
Drawn By: BCW
Sheet: 1 of 5
Drawing No. 10-00158



- Notes:
1. View Is From The Inside.
 2. Indicates .0065 x 3" EGS Backing Strip
 3. Indicates Aluminum Tube Stuffed With Wood.
 4. Fill All Voids With 1 1/2" 1.8# Min. EPS Foam Unless Otherwise Noted.
 5. Indicates 2" FRP Overhang Min.

East to West RV claims exclusive rights to the information documented herein. Manufacture of material shown in part or full is prohibited without the written consent from East to West RV.	Rev	Description	Date	ECN#	Title: Sidewall, Door Side Backer Locations Model Usage: Longitude: 310RL	Date: 08/22/23
	A	Released For Production	08/22/23	--		Drawn By: BCW
	B	Revised, Updated Awning, EGS Location & Window Size	10/20/23	--		Sheet: 2 of 5
TOLERANCES: UNLESS OTHERWISE STATED DIMS ARE IN INCHES .X = ± .1 FRACTIONS = ± 1/16 .XX = ± .01 ANGLES = ± .1°	C	Revised, Changed Front Cargo Door Was 24 x 14	02/21/24	--	File No.	Drawing No. 10-00158



Notes:

1. View Is From The Inside.
2. Indicates .0065 x 3" EGS Backing Strip
3. Indicates Aluminum Tube Stuffed With Wood.
4. Fill All Voids With 1 1/2" 1.8# Min. EPS Foam Unless Otherwise Noted.
5. Indicates 2" FRP Overhang Min.

East to West RV claims exclusive rights to the information documented herein. Manufacture of material shown in part or full is prohibited without the written consent from East to West RV.

TOLERANCES: UNLESS OTHERWISE STATED
DIMS ARE IN INCHES
.X = ± .1 FRACTIONS = ± 1/16
.XX = ± .01 ANGLES = ± .1°

Rev	Description	Date	ECN#
A	Released For Production	08/22/23	--
B	Revised, Updated Awning, EGS Location & Window Size	10/20/23	--
C	Revised, Changed Front Cargo Door Was 24 x 14	02/21/24	--

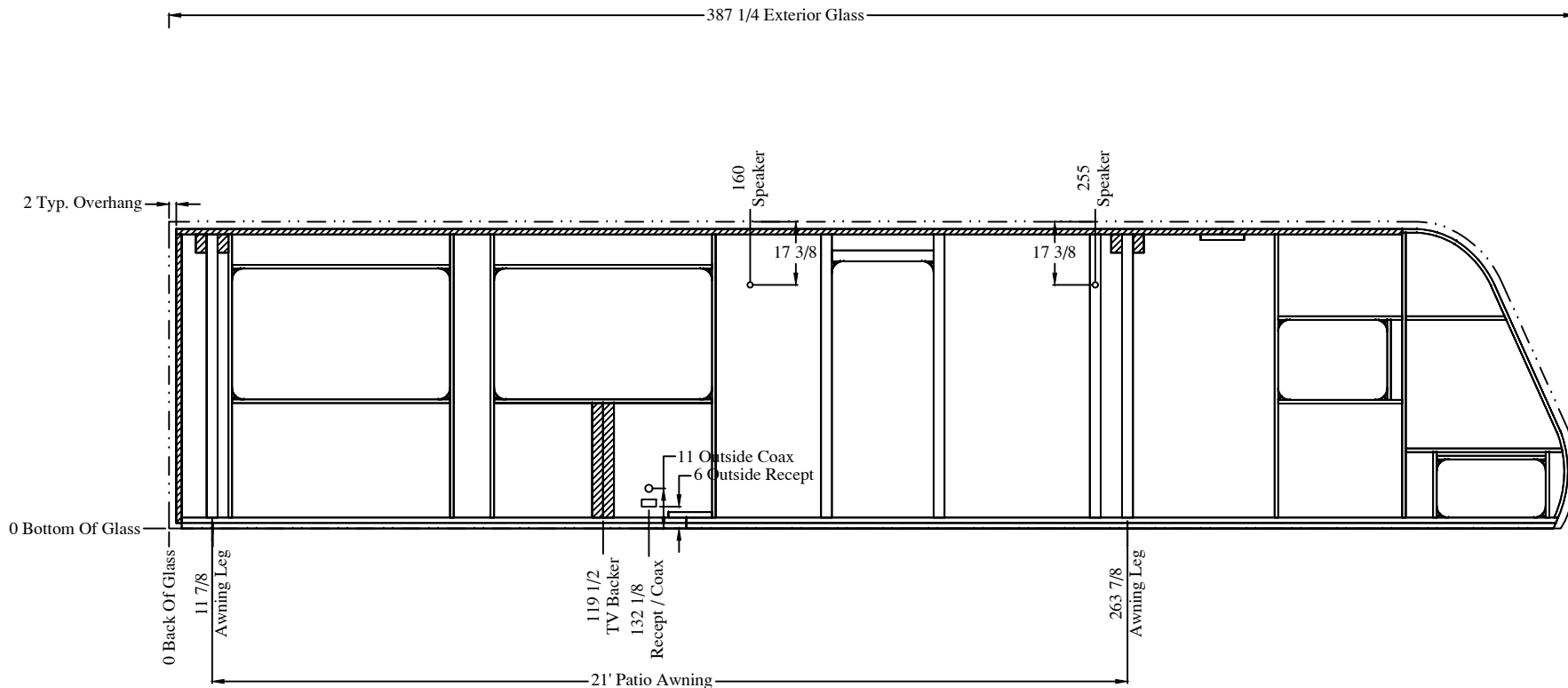
Title: *Sidewall, Door Side
Rout Locations*

Model Usage: *Longitude: 310RL*

File No. _____



Date: <i>08/22/23</i>
Drawn By: <i>BCW</i>
Sheet: <i>3 of 5</i>
Drawing No. 10-00158



East to West RV claims exclusive rights to the information documented herein. Manufacture of material shown in part or full is prohibited without the written consent from East to West RV.

Rev	Description	Date	ECN#
A	Released For Production	08/22/23	--
B	Revised, Updated Awning, EGS Location & Window Size	10/20/23	--
C	Revised, Changed Front Cargo Door Was 24 x 14	02/21/24	--

TOLERANCES: UNLESS OTHERWISE STATED
DIMS ARE IN INCHES
.X = ± .1 FRACTIONS = ± 1/16
.XX = ± .01 ANGLES = ± .1°

Title: *Sidewall, Door Side
Wire Channel & Awning Locations*

Model Usage: *Longitude: 310RL*

EAST WEST

Date: <i>08/22/23</i>
Drawn By: <i>BCW</i>
Sheet: <i>4 of 5</i>
Drawing No. 10-00158

Ref. Qty.	Material Description	Extended	UM	Ref. Qty.	Material Description	Extended	UM
1	0 10- Frame, Plug Wall -	0.00	Ea	37	1 Aluminum Tube 0.040 x 1 x 1 1/2 x 78 3/8	6.53	
2	0 10- Frame, Plug Wall -	0.00	Ea	38	5 Aluminum Tube 0.040 x 1 x 1 1/2 x 77 7/8	32.45	
3	0 10- Frame, Plug Wall -	0.00	Ea	39	4 Aluminum Tube 0.040 x 1 x 1 1/2 x 60	20.00	
4	1 10-00157 Frame, Front Profile Tube	1.00	Ea	40	1 Aluminum Tube 0.040 x 1 x 1 1/2 x 43 1/8	3.59	Cut One End 11°
				41	2 Aluminum Tube 0.040 x 1 x 1 1/2 x 34 1/8	5.69	
				42	1 Aluminum Tube 0.040 x 1 x 1 1/2 x 30	2.50	
5	0 Aluminum TH Tube 0.063 x 1 1/2 x 5 x 0	0.00		43	1 Aluminum Tube 0.040 x 1 x 1 1/2 x 27 11/16	2.31	Cut One End 24°
6	0 Aluminum TH Tube 0.063 x 1 1/2 x 5 x 0	0.00		44	0 Aluminum Tube 0.040 x 1 x 1 1/2 x 0	0.00	
7	0 Aluminum TH Tube 0.063 x 1 1/2 x 5 x 0	0.00		45	1 Aluminum Tube 0.040 x 1 x 1 1/2 x 22	1.83	
		1.00	LF	46	2 Aluminum Tube 0.040 x 1 x 1 1/2 x 18	3.00	
				47	0 Aluminum Tube 0.040 x 1 x 1 1/2 x 0	0.00	
8	0 Aluminum Tube 0.125 x 1 1/2 x 3 x 0	0.00		48	0 Aluminum Tube 0.040 x 1 x 1 1/2 x 0	0.00	
9	0 Aluminum Tube 0.125 x 1 1/2 x 3 x 0	0.00		49	0 Aluminum Tube 0.040 x 1 x 1 1/2 x 0	0.00	
10	0 Aluminum Tube 0.125 x 1 1/2 x 3 x 0	0.00		50	0 Aluminum Tube 0.040 x 1 x 1 1/2 x 0	0.00	
11	0 Aluminum Tube 0.125 x 1 1/2 x 3 x 0	0.00				77.90	LF
12	0 Aluminum Tube 0.125 x 1 1/2 x 3 x 0	0.00					
13	0 Aluminum Tube 0.125 x 1 1/2 x 3 x 0	0.00		9.84	EGS Backing 0.007 x 3 x 96	78.72	LF
14	0 Aluminum Tube 0.125 x 1 1/2 x 3 x 0	0.00	LF				
				7	Décor Board 2.7mm x 48 x 96	224.00	Sf
15	5 Aluminum Tube 0.060 x 1 1/2 x 3 x 77 7/8	32.45		1	Décor Board 2.7mm x 24 x 96	16.00	Sf
16	2 Aluminum Tube 0.060 x 1 1/2 x 3 x 31 1/2	5.25		1	Décor Board 2.7mm x 23 1/8 x 96	15.42	Sf
17	1 Aluminum Tube 0.060 x 1 1/2 x 3 x 28	2.33		0	Accent Board 2.7mm x 48 x 96	0.00	Sf
18	4 Aluminum Tube 0.060 x 1 1/2 x 3 x 5	1.67	Stuffed w/Wood	0	Accent Board 2.7mm x 48 x 96	0.00	Sf
19	0 Aluminum Tube 0.060 x 1 1/2 x 3 x 0	0.00					
20	0 Aluminum Tube 0.060 x 1 1/2 x 3 x 0	0.00		8	Luaun 2.7mm x 48 x 96	266.00	Sf
21	0 Aluminum Tube 0.060 x 1 1/2 x 3 x 0	0.00		1	Luaun 2.7mm x 3 1/4 x 96	2.17	Sf
22	0 Aluminum Tube 0.060 x 1 1/2 x 3 x 0	0.00	LF				
		41.70		1	FRP 84 3/8 x 387 1/4	226.90	Sf
23	1 Aluminum P-Tube 0.055 x 1 1/2 x 3 x 240	20.00	Cut One End 23°	8.5	1.8# Min. EPS Foam 1 1/2 48 x 96	272.00	Sf
24	1 Aluminum P-Tube 0.055 x 1 1/2 x 3 x 138 15/16	11.58					
		31.58	LF	2	Radius Block (ED)	2.00	Ea
25	0 Aluminum Tube 0.060 x 1 1/2 x 2 1/2 x 0	0.00		12	Radius Block (W)	12.00	Ea
26	0 Aluminum Tube 0.060 x 1 1/2 x 2 1/2 x 0	0.00		4	Radius Block (BD)	4.00	Ea
27	0 Aluminum Tube 0.060 x 1 1/2 x 2 1/2 x 0	0.00	LF				
		0.00					
28	1 Aluminum Tube 0.040 x 1 1/2 x 1 1/2 x 288	24.00	Stuffed w/Wood				
29	1 Aluminum Tube 0.040 x 1 1/2 x 1 1/2 x 79 3/8	6.61	Stuffed w/Wood				
30	1 Aluminum Tube 0.040 x 1 1/2 x 1 1/2 x 49 1/2	4.13	Stuffed w/Wood				
31	2 Aluminum Tube 0.040 x 1 1/2 x 1 1/2 x 12	2.00					
32	0 Aluminum Tube 0.040 x 1 1/2 x 1 1/2 x 0	0.00					
33	0 Aluminum Tube 0.040 x 1 1/2 x 1 1/2 x 0	0.00					
34	0 Aluminum Tube 0.040 x 1 1/2 x 1 1/2 x 0	0.00					
35	0 Aluminum Tube 0.040 x 1 1/2 x 1 1/2 x 0	0.00					
36	0 Aluminum Tube 0.040 x 1 1/2 x 1 1/2 x 0	0.00	LF				
		36.74					

East to West RV claims exclusive rights to the information documented herein. Manufacture of material shown in part or full is prohibited without the written consent from East to West RV.

TOLERANCES: UNLESS OTHERWISE STATED
DIMS ARE IN INCHES
.X = ± .1 FRACTIONS = ± 1/16
.XX = ± .01 ANGLES = ± .1°

Rev	Description	Date	ECN#
A	Released For Production	08/22/23	--
B	Revised, Updated Awning, EGS Location & Window Size	10/20/23	--
C	Revised, Changed Front Cargo Door Was 24 x 14	02/21/24	--

Title: *Sidewall, Door Side Cut List*

Model Usage: *Longitude: 310RL*

File No.

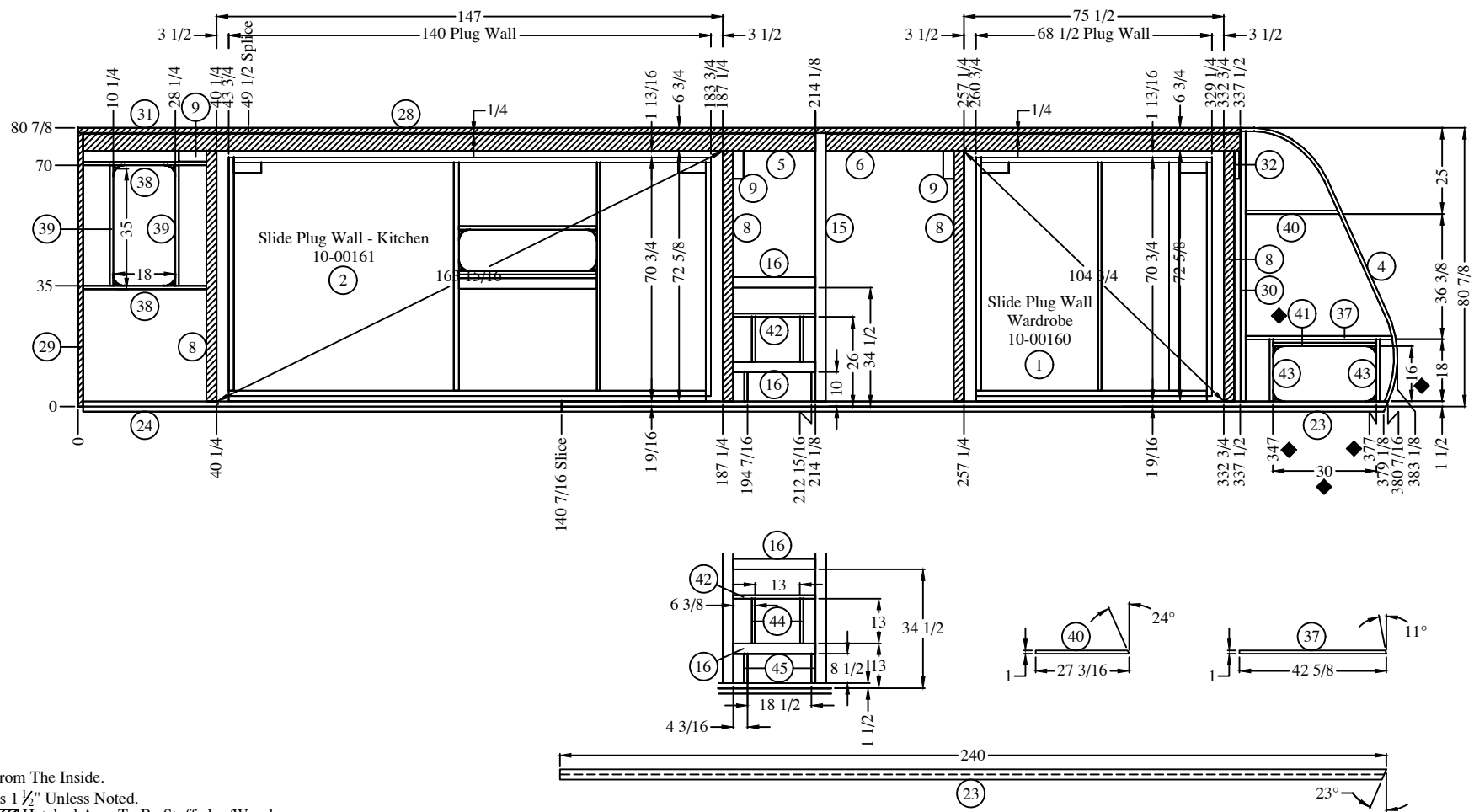


Date: *08/22/23*

Drawn By: *BCW*

Sheet: *5 of 5*

Drawing No. **10-00158**



- Notes:
1. View Is From The Inside.
 2. Framing Is 1 1/2" Unless Noted.
 3. Hatched Area To Be Stuffed w/Wood

East to West RV claims exclusive rights to the information documented herein. Manufacture of material shown in part or full is prohibited without the written consent from East to West RV.

TOLERANCES: UNLESS OTHERWISE STATED
 DIMS ARE IN INCHES
 .X = ± .1 FRACTIONS = ± 1/16
 .XX = ± .01 ANGLES = ± .1°

Rev	Description	Date	ECN#
A	Released For Production	08/22/23	--
B	Revised, Flipped Water Heater & Furnace Locations	10/20/23	--
C	Revised, Changed Front Cargo Door Was 24 x 14	02/21/24	--

Title: **Sidewall, Off Door Side Aluminum Framing**

Model Usage: **Longitude: 310RL**

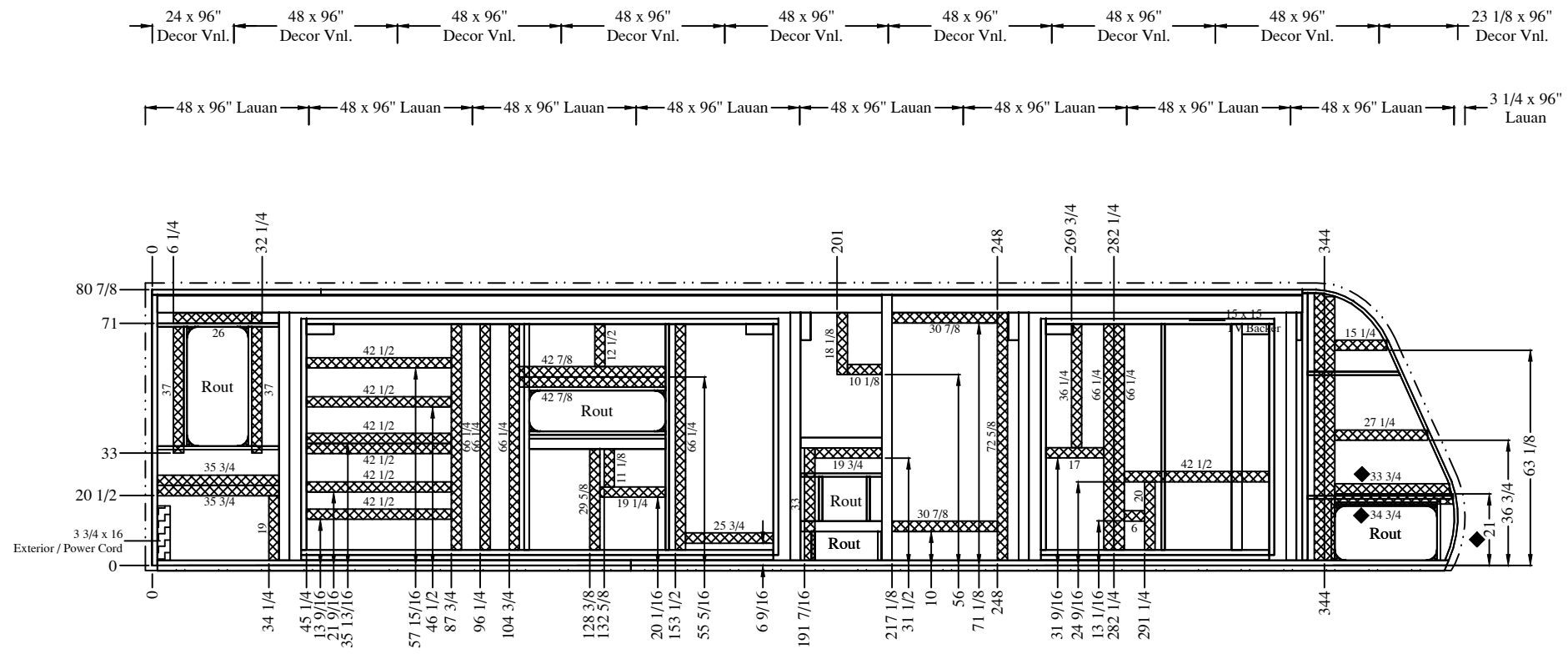
File No. **10-00158**

Date: **08/22/23**

Drawn By: **BCW**

Sheet: **1 of 5**

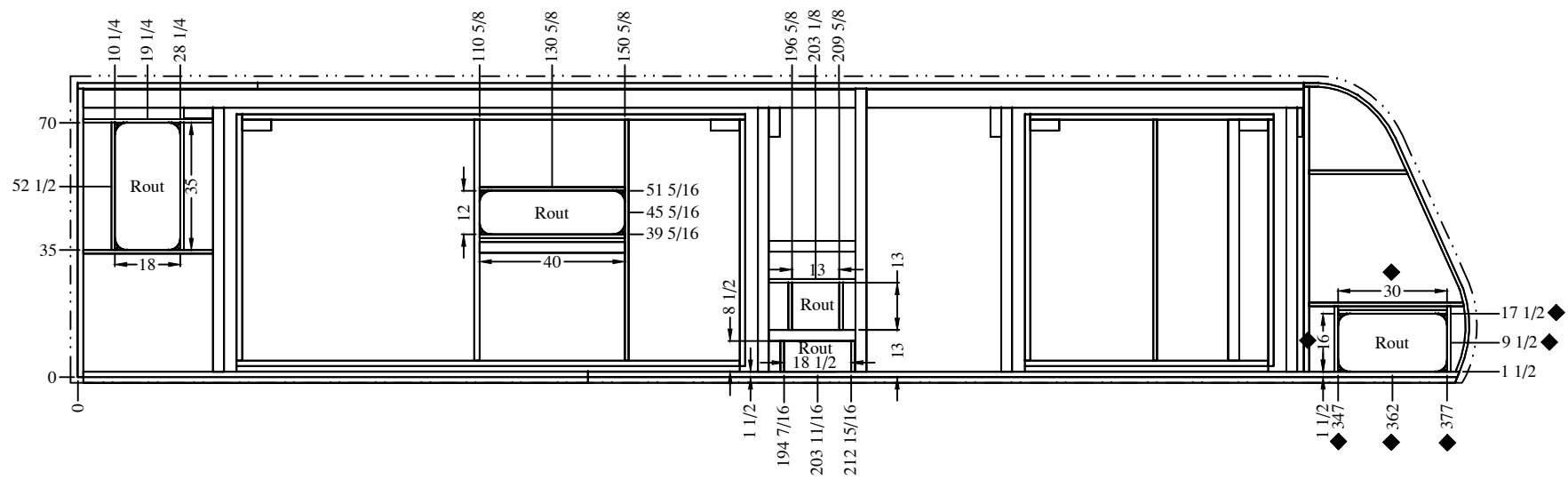
Drawing No. **10-00159**



- Notes:
1. View Is From The Inside.
 2. [Cross-hatch pattern] Indicates .0065 x 3" EGS Backing Strip (Interior)
 3. [Diagonal-hatch pattern] Indicates .0065 x 3" EGS Backing Strip (Exterior)
 4. Fill All Voids With 1 1/2" 1.8# Min. EPS Foam Unless Otherwise Noted.
 5. [Dashed line] Indicates 2" FRP Overhang Min.

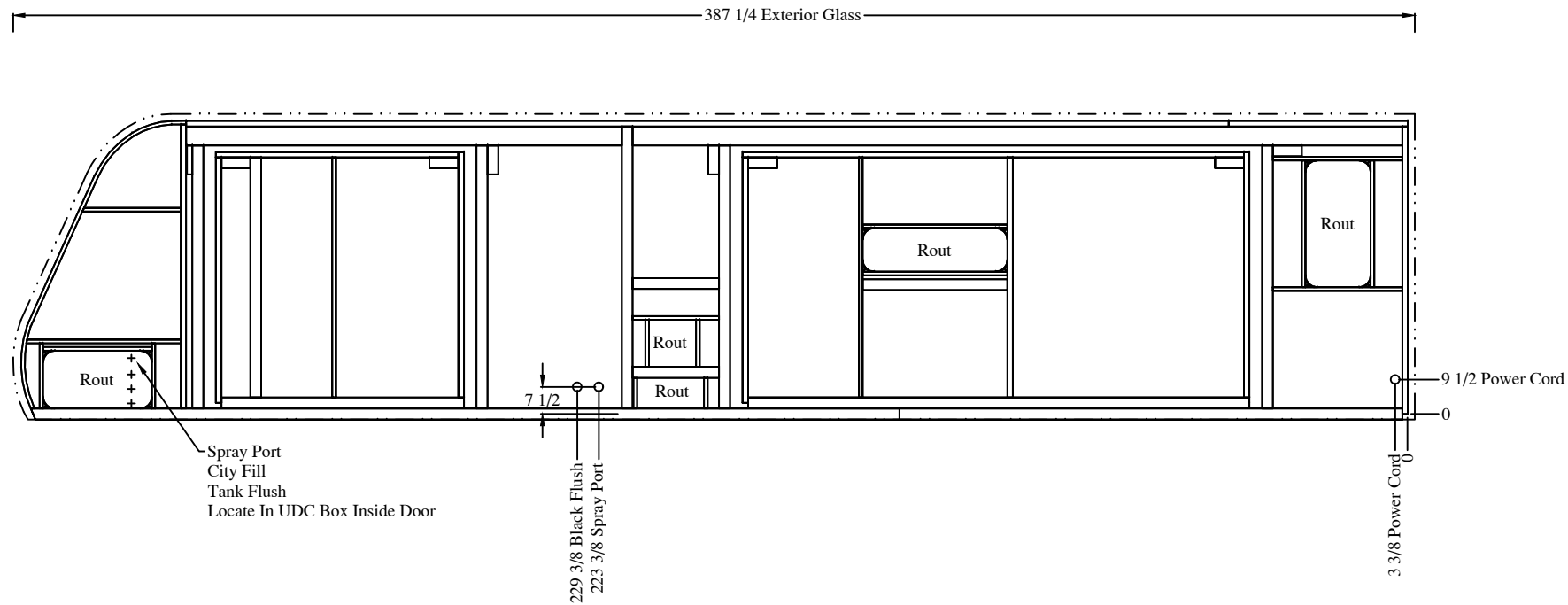
East to West RV claims exclusive rights to the information documented herein. Manufacture of material shown in part or full is prohibited without the written consent from East to West RV.	Rev	Description	Date	ECN#	Title: <i>Sidewall, Off Door Side Backer Locations</i>	Date: 08/22/23
	A	Released For Production	05/16/23	--		Drawn By: BCW
	B	Revised, Flipped Water Heater & Furnace Locations	10/20/23	--		Sheet: 2 of 5
	C	Revised, Changed Front Cargo Door Was 24 x 14	02/21/24	--	Model Usage: <i>Longitude: 310RL</i>	Drawing No. 10-00159
TOLERANCES: UNLESS OTHERWISE STATED DIMS ARE IN INCHES .X = ± .1 FRACTIONS = ± 1/16 .XX = ± .01 ANGLES = ± .1°					File No. 10-00158	





- Notes:
1. View Is From The Inside.
 2. Indicates .0065 x 3" EGS Backing Strip
 3. Indicates Aluminum Tube Stuffed With Wood.
 4. Fill All Voids With 1 1/2" 1.8# Min. EPS Foam Unless Otherwise Noted.
 5. Indicates 2" FRP Overhang Min.

East to West RV claims exclusive rights to the information documented herein. Manufacture of material shown in part or full is prohibited without the written consent from East to West RV.	Rev	Description	Date	ECN#	Title: <i>Sidewall, Off Door Side Routh Locations</i>	Date:	08/22/23
	A	Released For Production	08/22/23	--		Drawn By:	BCW
	B	Revised, Flipped Water Heater & Furnace Locations	10/20/23	--		Sheet:	3 of 5
TOLERANCES: UNLESS OTHERWISE STATED DIMS ARE IN INCHES .X = ± .1 FRACTIONS = ± 1/16 .XX = ± .01 ANGLES = ± .1°	C	Revised, Changed Front Cargo Door Was 24 x 14	02/21/24	--	Model Usage:	Longitude: 310RL	Drawing No.
						File No.	10-00158
							10-00159



East to West RV claims exclusive rights to the information documented herein. Manufacture of material shown in part or full is prohibited without the written consent from East to West RV.

Rev	Description	Date	ECN#
A	Released For Production	08/22/23	--
B	Revised, Flipped Water Heater & Furnace Locations	10/20/23	--
C	Revised, Changed Front Cargo Door Was 24 x 14	02/21/24	--

Title:	<i>Sidewall, Off Door Side Wire Channel Locations</i>
Model Usage:	<i>Longitude: 310RL</i>
File No.	10-00158

Date:	<i>08/22/23</i>
Drawn By:	<i>BCW</i>
Sheet:	<i>4 of 5</i>
Drawing No.	10-00159

TOLERANCES: UNLESS OTHERWISE STATED
DIMS ARE IN INCHES
.X = ± .1 FRACTIONS = ± 1/16
.XX = ± .01 ANGLES = ± .1°



Ref. Qty.	Material Description	Extended	UM	Ref. Qty.	Material Description	Extended	UM
1	1 10-00160			37	1 Aluminum Tube	3.55	Cut One End 11°
2	1 10-00161	1.00	Ea	38	2 Aluminum Tube	5.96	
3	10-	0.00	Ea	39	2 Aluminum Tube	5.83	
4	1 10-00157	1.00	Ea	40	1 Aluminum Tube	2.27	Cut One End 24°
				41	1 Aluminum Tube	2.50	
5	1 Aluminum TH Tube	17.72		42	1 Aluminum Tube	1.99	
6	1 Aluminum TH Tube	10.03		43	2 Aluminum Tube	3.00	
7	0 Aluminum TH Tube	0.00		44	2 Aluminum Tube	2.17	
		28.75	LF	45	2 Aluminum Tube	1.42	
8	4 Aluminum Tube	24.21		46	0 Aluminum Tube	0.00	
9	3 Aluminum Tube	2.00		47	0 Aluminum Tube	0.00	
10	0 Aluminum Tube	0.00		48	0 Aluminum Tube	0.00	
11	0 Aluminum Tube	0.00		49	0 Aluminum Tube	0.00	
12	0 Aluminum Tube	0.00		50	0 Aluminum Tube	0.00	
13	0 Aluminum Tube	0.00				28.68	LF
14	0 Aluminum Tube	0.00		16.6	EGS Backing	132.96	LF Interior
		26.21	LF	1	EGS Backing	1.56	Sf Interior
15	1 Aluminum Tube	6.49		7	Décor Board	224.00	Sf
16	2 Aluminum Tube	3.98		1	Décor Board	16.00	Sf
17	0 Aluminum Tube	0.00		1	Décor Board	21.42	Sf
18	0 Aluminum Tube	0.00		0	Accent Board	0.00	Sf
19	0 Aluminum Tube	0.00		0	Accent Board	0.00	Sf
20	0 Aluminum Tube	0.00		8	Luaun	256.00	Sf
21	0 Aluminum Tube	0.00		1	Luaun	2.17	Sf
22	0 Aluminum Tube	0.00				10.47	LF
23	1 Aluminum P-Tube	20.00		1	FRP	226.90	Sf
24	1 Aluminum P-Tube	11.58				84 3/8 x 387 1/4	
		31.58	LF	8.5	1.8# Min. EPS Foam	272.00	Sf
25	0 Aluminum Tube	0.00		0	Radius Block (ED)	0.00	Ea
26	0 Aluminum Tube	0.00		8	Radius Block (W)	8.00	Ea
27	0 Aluminum Tube	0.00		4	Radius Block (BD)	4.00	Ea
		0.00	LF				
28	1 Aluminum Tube	24.00					
29	1 Aluminum Tube	6.61					
30	1 Aluminum Tube	6.53					
31	1 Aluminum Tube	4.13					
32	1 Aluminum Tube	0.67					
33	0 Aluminum Tube	0.00					
34	0 Aluminum Tube	0.00					
35	0 Aluminum Tube	0.00					
36	0 Aluminum Tube	0.00					
		41.94	LF				

East to West RV claims exclusive rights to the information documented herein. Manufacture of material shown in part or full is prohibited without the written consent from East to West RV.

TOLERANCES: UNLESS OTHERWISE STATED
DIMS ARE IN INCHES
.X = ± .1 FRACTIONS = ± 1/16
.XX = ± .01 ANGLES = ± .1°

Rev	Description	Date	ECN#
A	Released For Production	08/22/23	--
B	Revised, Flipped Water Heater & Furnace Locations	10/20/23	--
C	Revised, Changed Front Cargo Door Was 24 x 14	02/21/24	--

Title: *Sidewall, Off Door Side Cut List*

Model Usage: *Longitude: 310RL*

File No. **10-00158**



Date: *08/22/23*

Drawn By: *BCW*

Sheet: *5 of 5*

Drawing No. **10-00159**