

**TECHNICAL SERVICE BULLETIN****10R80 Transmission - Harsh/Delayed Engagement And/Or Harsh/Delayed Shift - Built On Or Before 15-Aug-2022****24-2254**

23 August 2024

Model:

Ford 2022 Expedition	Built on or before 15-Aug 2022 Transmission: 10R80
2020-2022 Explorer	Built on or before 15-Aug 2022 Transmission: 10R80 (does not include 10R80 MHT)
2021-2022 F-150	Built on or before 15-Aug 2022 Transmission: 10R80 (does not include 10R80 MHT)
2021-2022 Mustang	Built on or before 15-Aug 2022 Transmission: 10R80
2020-2023 Transit	Built on or before 15-Aug 2022 Transmission: 10R80
Lincoln 2022 Navigator	Built on or before 15-Aug 2022 Transmission: 10R80

Markets: North American markets only**Summary**

Issue: Some 2020-2022 Explorer, 2020-2023 Transit, 2021-2022 F-150, 2021-2022 Mustang and 2022 Expedition/Navigator vehicles equipped with a 10R80 transmission (excluding hybrid) may exhibit harsh/delayed engagements and/or harsh/delayed shifts, an illuminated MIL with DTC P0751, P0752, P0756, P0757, P0761, P0762, P0766, P0767, P0771, P0772, P2700, P2701, P2702, P2703, P2704, P2705, P2707, P2708, P0729, P0731, P0732, P0733, P0734, P0735, P0736, P076F, P07D9, P07F6 and/or P07F7 stored in the PCM or TCM. This may be due to axial movement of the CDF clutch cylinder (7H351) sleeve causing hydraulic circuit leaks. To correct the condition, follow the Service Procedure to verify hydraulic circuit leakage and replace the CDF clutch cylinder (7H351) if necessary.

NOTE: If internal transmission service is required to address a concern detected with the CDF clutch cylinder following this article, technicians should carefully inspect and replace other transmission components and flush transmission fluid cooler only as necessary to confirm proper function. Add a new line to the repair order to document any additional repairs needed. M-time can be claimed on the additional repair line to cover labor. Refer to Warranty and Policy Manual for additional information. A thorough understanding of transmission description and operation will assist the technician with proper diagnosis, inspection, and successful repair of the customer concern.

NOTE: The Pressure Vacuum Transducer Kit (Rotunda 164-R9833) and VCMM Transmission Extension Kit (Rotunda 164-R9534) needed to perform this article are no longer included with the VCMM Advanced Kit (Rotunda 164-R9823), and were discontinued in July 2023. Ford has confirmed a high percentage (80%) of Dealers have this equipment available to perform the article. Rotunda currently has limited availability of transmission extension kits, and limited availability of pressure vacuum transducer kits is expected by early September 2024. Dealers that require this equipment are requested to order as soon as possible.

NOTE: Dealers that are unable to perform this article only due to equipment availability are advised perform TSB 24-2176. Although superseded by this article, the TSB is available on PTS to download and use for this purpose only. Enter "24-2176" in the search box located in the upper right-hand corner of the screen. For claiming, determine the appropriate causal part number and use available labor times in Section 7 of the SLTS Manual or claim M-time in accordance with the Warranty and Policy Manual.

Action: Follow the Service Procedure to correct the condition on vehicles that meet all of the following criteria:

- One of the following vehicles, equipped with a 10R80 transmission (excluding hybrid), built on or before 15-Aug 2022:
 - 2020-2022 Explorer
 - 2020-2023 Transit
 - 2021-2022 F-150
 - 2021-2022 Mustang
 - 2022 Expedition/Navigator
- At least one of the following conditions:

- DTC P0751, P0752, P0756, P0757, P0761, P0762, P0766, P0767, P0771, P0772, P2700, P2701, P2702, P2703, P2704, P2705, P2707, P2708, P0729, P0731, P0732, P0733, P0734, P0735, P0736, P076F, P07D9, P07F6 and/or P07F7
- Harsh engagement
- Delayed engagement
- Harsh shift
- Delayed shift

Parts - Main Control Removal and Instalation - Parts To Inspect And Replace Only If Necessary - All Vehicles

Service Part Number	Claim Quantity	Package Order Quantity	Number in Package	Description
HL3Z-7A191-B	Only If Necessary (1 Possible)	Only If Necessary (1 Possible)	1	Fluid Pan Gasket
HL3Z-7A098-A	Only If Necessary (1 Possible)	Only If Necessary (1 Possible)	1	Fluid Filter (F-150/Expedition/Navigator/Mustang/Explorer)
LK4Z-7A098-A	Only If Necessary (1 Possible)	Only If Necessary (1 Possible)	1	Fluid Filter (Transit)
7T4Z-7Z302-A	Only If Necessary (1 Possible)	Only If Necessary (1 Possible)	1	Fluid Filter Seal
HL3Z-7J227-A	Only If Necessary (1 Possible)	Only If Necessary (1 Possible)	1	Auxiliary Pump Tube O-ring (If Equipped)

Parts - CDF Cylinder Replacement

Service Part Number	Claim Quantity	Package Order Quantity	Number in Package	Description
HL3Z-7G199-A	1	1	1	Auxiliary Pump Tube Seal (If Equipped With Stop/Start)
HL3Z-7A248-A	1	1	1	Torque Converter Seal
JL3Z-7N134-A	12	12	1	Front Support Bolts
LC3Z-7H223-A	12	12	1	Front Support Bolt Seals
HL3Z-7A248-G	1	1	1	Front Support To Case Seal
HL3Z-7G091-F	5	5	1	Input Shaft Seals (F2)
HL3Z-7B399-C	4	4	1	Sun Gear No. 3 Shaft Seals (F7)
HL3Z-7C099-A	1	1	1	C Clutch Balance Dam Inner Seal
HL3Z-7A548-B	2	2	1	C Clutch Balance Dam And Piston Outer Seal
HL3Z-7D404-A	2	2	1	C And D Clutch Piston Inner Seals
HL3Z-7A262-C	1	1	1	D Clutch Balance Dam
HL3Z-7D403-A	1	1	1	D Clutch Piston Outer Seal
HL3Z-7A548-G	2	2	1	F Clutch Balance Dam And Piston Outer Seal
HL3Z-7A548-A	2	2	1	F Clutch Balance Dam And Piston Inner Seal
HL3Z-7G091-G	5	5	1	Input Shaft To Sun Gear No. 3 Shaft Seals (F8)
HL3Z-7G091-C	1	1	1	Input Shaft Seal (F9)
JL3Z-7H351-B	1	1	1	CDF Cylinder (5.0L Mustang, Transit, 3.0L Explorer)
JR3Z-7H351-B	1	1	1	CDF Cylinder (3.3L Explorer, 2.3L Mustang)
ML3Z-7H351-B	1	1	1	CDF Cylinder (F-150/Expedition/Navigator)

Parts - CDF Cylinder Replacement - Parts To Inspect And Replace Only If Necessary

Service Part Number	Claim Quantity	Package Order Quantity	Number in Package	Description
HL3Z-7B066-AB	Only If Necessary (1 Possible)	Only If Necessary	1	A Pressure Plate
HL3Z-7B164-E	Only If Necessary (3 Possible)	Only If Necessary	1	A Clutch Friction Plates

HL3Z-7F220-A	Only If Necessary (2 Possible)	Only If Necessary	1	A Clutch Steel Plates
HL3Z-7B442-F	Only If Necessary (Transit Has 4 Possible, All Others Have 5 Possible)	Only If Necessary	1	C Clutch Steel Plates
HL3Z-7B164-A	Only If Necessary (Transit Has 4 Possible, Explorer/Mustang Have 5 Possible)	Only If Necessary	1	C Clutch Friction Plates (Explorer/Transit/Mustang)
ML3Z-7H095-A	Only If Necessary (5 Possible)	Only If Necessary	1	C Clutch Friction Plates (F-150/Expedition/Navigator)
ML3Z-7B477-A	Only If Necessary (1 Possible)	Only If Necessary	1	C Clutch Pressure Plate
HL3Z-7B164-C	Only If Necessary (6 Possible)	Only If Necessary	1	D Clutch Friction Plates (Explorer/Transit/Mustang)
ML3Z-7B164-A	Only If Necessary (6 Possible)	Only If Necessary	1	D Clutch Friction Plates (F-150/Expedition/Navigator)
HL3Z-7B442-D	Only If Necessary (Transit Has 5 Possible, All Others Have 6 Possible)	Only If Necessary	1	D Clutch Steel Plates
HL3Z-7B066-E	Only If Necessary (1 Possible)	Only If Necessary	1	D Clutch Pressure Plate
HL3Z-7B164-G	Only If Necessary (Transit Has 3 Possible, All Others Have 4 Possible)	Only If Necessary	1	F Clutch Steel Plates
HL3Z-7B164-D	Only If Necessary (Transit Has 3 Possible, All Others Have 4 Possible)	Only If Necessary	1	F Clutch Friction Plates
HL3Z-7B066-A	Only If Necessary (1 Possible)	Only If Necessary	1	F Clutch Pressure Plate

Parts - 10R80 CDF Cylinder Replacement - Select One Of The Following If Needed

Service Part Number	Claim Quantity	Package Order Quantity	Number in Package	Description
HL3Z-7B066-AA	1	1	1	A Clutch Apply Plate 4.1-4.3 mm Selective
HL3Z-7B066-Z	1	1	1	A Clutch Apply Plate 4.4-4.6 mm Selective
HL3Z-7B066-Y	1	1	1	A Clutch Apply Plate 4.7-4.9 mm Selective
HL3Z-7B066-X	1	1	1	A Clutch Apply Plate 5.0-5.2 mm Selective
HL3Z-7B066-W	1	1	1	A Clutch Apply Plate 5.3-5.5 mm Selective
HL3Z-7H032-C	1	1	1	T-3 Bearing (Replace If T-3 Shim Is Replaced)
HL3Z-7A527-Q	1	1	1	T-3 Shim 3.05-3.15 mm Selective
HL3Z-7A527-P	1	1	1	T-3 Shim 3.2-3.3 mm Selective
HL3Z-7A527-R	1	1	1	T-3 Shim 3.35-3.45 mm Selective
HL3Z-7A527-K	1	1	1	T-3 Shim 3.5-3.6 mm Selective
HL3Z-7A527-L	1	1	1	T-3 Shim 3.65-3.75 mm Selective
HL3Z-7A527-M	1	1	1	T-3 Shim 3.8-3.9 mm Selective
HL3Z-7A527-S	1	1	1	T-3 Shim 3.95-4.05 mm Selective
HL3Z-7A527-T	1	1	1	T-3 Shim 4.1-4.2 mm Selective
HL3Z-7A527-N	1	1	1	T-3 Shim 4.25-4.35 mm Selective
HL3Z-7D483-A	1	1	1	D Clutch Snap Ring 1.8M mm Selective
HL3Z-7D483-B	1	1	1	D Clutch Snap Ring 2.0 mm Selective
HL3Z-7D483-C	1	1	1	D Clutch Snap Ring 2.2 mm Selective
HL3Z-7D483-D	1	1	1	D Clutch Snap Ring 2.4 mm Selective
HL3Z-7D483-E	1	1	1	D Clutch Snap Ring 2.6 mm Selective
HL3Z-7D483-F	1	1	1	D Clutch Snap Ring 2.8 mm Selective

HL3Z-7C122-A	1	1	1	C Clutch Snap Ring 1.5 mm Selective
HL3Z-7C122-B	1	1	1	C Clutch Snap Ring 1.7 mm Selective
HL3Z-7C122-C	1	1	1	C Clutch Snap Ring 1.9 mm Selective
HL3Z-7C122-D	1	1	1	C Clutch Snap Ring 2.1 mm Selective
HL3Z-7C122-E	1	1	1	C Clutch Snap Ring 2.3 mm Selective
HL3Z-7C122-F	1	1	1	C Clutch Snap Ring 2.5 mm Selective
HL3Z-7H365-C	1	1	1	F Clutch Snap Ring 1.5 mm Selective
HL3Z-7H365-D	1	1	1	F Clutch Snap Ring 1.7 mm Selective
HL3Z-7H365-E	1	1	1	F Clutch Snap Ring 1.9 mm Selective
HL3Z-7H365-F	1	1	1	F Clutch Snap Ring 2.1 mm Selective
HL3Z-7H365-G	1	1	1	F Clutch Snap Ring 2.3 mm Selective

Parts - F-150/Expedition/Navigator Transmission Removal And Installation

Service Part Number	Claim Quantity	Package Order Quantity	Number in Package	Description
7L1Z-4B496-C	2	2	1	CV Joint-To-Pinion Flange Cup Bolts And Retaining Straps (4WD)
FL3Z-6775-D	1	1	1	Self-Adhesive Heat Shield
7L1Z-4B496-D	3	3	1	CV Joint-To-Transfer Case Flange Cup Bolts And Retaining Straps (4WD Expedition/Navigator)
JL1Z-7N134-A	1	1	1	Park Override Lever Bolt (Non-Column Shift Expedition/Navigator)
PL3Z-5C226-A	2	2	1	Left And Right Catalytic Converter Gasket (F-150 2.7L/3.5L, Expedition/Navigator)
W520113-S440	4	1	4	Stabilizer Bar Bracket Nuts
W520214-S440	4	2	2	Transmission Support Crossmember Nuts
W520514-S440	4	4	1	Left And Right Catalytic Converter Nuts (All Gas Engines)
W704980-S439	1	1	4	Park Manual Release Cable Bracket Bolt (2.7L/3.3L/3.5L/5.0L)
W709771-S440	2	2	1	Transmission Mount Nuts
W711140-S901	3	3	1	Transmission Insulator Bolts And Washers (RWD Gas)
W714418-S439	4	1	4	Transmission Support Crossmember Bolts
W715131-S437	1	1	4	Transmission Fluid Cooler Tube Bracket

				Bolt (Expedition/Navigator)
W715618-S437	F-150 2.7L/3.3L/3.5L/5.0L/Expedition/Navigator Require 4 Pieces, F-150 3.0L Require 6 Pieces	1 For F-150 2.7L/3.3L/3.5L/5.0L/Expedition/Navigator, 2 For F-150 3.0L	4	Torque Converter Nuts
W715798-S442	1	1	4	Fluid Cooler Tube Studbolt 3.0L (Park Manual Release Cable Bracket Bolt 3.5L)
W716375-S900	9	2	5	Transfer Case Bolts (4WD)
W718353-S900	4	1	4	Transmission Insulator Bolts (F-150 2.7L/3.3L/3.5L/5.0L 4WD, F-150 3.0L RWD, Expedition/Navigator 4WD)
W718926-S900	4	1	4	Transmission Insulator Bolts (F-150 3.0L 4WD)
W715579-S439	2	1	4	Driveshaft Center Bearing Bolt (If Equipped With Two Piece Driveshaft)
TA-24-B	As Needed	As Needed		Motorcraft® Thread Sealant With PTFE (4WD)
VC-13DL-G	As Needed	As Needed		Motorcraft® Yellow Prediluted Antifreeze/Coolant (All Markets Except Canada)
CVC-13DL-G	As Needed	As Needed		Motorcraft® Yellow Prediluted Antifreeze/Coolant (Canada Only)
XG-1-E1	As Needed	As Needed		Motorcraft® Premium Long-Life Grease
XL-5-A	As Needed	As Needed		Motorcraft® Multi- Purpose Grease Spray
XT-10-QLVC	As Needed	As Needed		Motorcraft® MERCON® LV Automatic Transmission Fluid (4WD) (All Markets Except Canada)
CXT-10-LV6	As Needed	As Needed		Motorcraft® MERCON® LV Automatic Transmission Fluid (4WD) (Canada Only)
XT-12-QULV	As Needed	As Needed		Motorcraft® MERCON® ULV Automatic Transmission Fluid

Parts - F-150/Expedition/Navigator Transmission Removal And Installation - Parts To Inspect And Replace Only If Necessary

Service Part Number	Claim Quantity	Package Order Quantity	Number in Package	Description
4W9Z-6397-A	Only If Necessary (2 Possible)	Only If Necessary (2 Possible)	1	Engine Block Dowel Pins (F-150 3.0L)
5L7Z-7D285-A	Only If Necessary (2 Possible)	Only If Necessary (1 Possible)	2	Transmission Fluid Cooler Tube Seals (3.0L/3.5L)
5L7Z-7J324-A	Only If Necessary (2 Possible)	Only If Necessary (1 Possible)	2	Fluid Cooler Tube Backing Rings
L1MZ-4421-A	Only If Necessary (1 Possible)	Only If Necessary (1 Possible)	1	Front Drive Shaft Boot
W701228-S300	Only If Necessary (2 Possible)	Only If Necessary (1 Possible)	4	Engine Block Dowel Pins (5.0L)
W718758-S300	Only If Necessary (2 Possible)	Only If Necessary (1 Possible)	4	Engine Block Dowel Pins (2.7L/3.3L/3.5L)

Parts - F-150/Expedition/Navigator Transmission Removal And Installation - Rear Driveshaft Bolts And Straps - Not All Vehicles Will Use All Of The Parts Listed

Service Part Number	Claim Quantity	Package Order Quantity	Number in Package	Description
N800594-S100	4 Or 8 (Flange Dependent)	1 Or 2	4	Driveshaft Flange To Flange Bolts (F-150)
N811880-S100	4 Or 8 (Flange Dependent)	1 Or 2	4	Driveshaft Flange To Flange Bolts (Expedition/Navigator)
W500635-S439	1	1	1	Driveshaft Center Bearing Bolt (If Equipped With Two Piece Driveshaft)
W713095-S437	1	1	1	Driveshaft Center Bearing Nut (If Equipped With Two Piece Driveshaft)
W719738-S439	1	1	1	Driveshaft Center Bearing Bracket Mounting Stud (If Equipped With Two Piece Driveshaft)

Parts - Mustang Transmission Removal And Installation

Service Part Number	Claim Quantity	Package Order Quantity	Number in Package	Description
BR3Z-5B266-A	1	1	1	Exhaust Gasket (5.0L)
W705443-S900	2	1	4	Catalytic Converter Flange Nuts (5.0L)
W700714-S437	2	1	4	Selector Lever Cable Bracket Bolts
W715131-S437	1	1	4	Transmission Fluid Cooler Tube Bracket Bolt
W715618-S437	5.0L Requires 4 Pieces, 2.3L Requires 6 Pieces	1 For 5.0L, 2 For 2.3L	4	Torque Converter Nuts
FR3Z-4B496-B	3	3	1	Driveshaft To Pinion Flange Bolts
W719298-S439	3	1	4	Driveshaft To Transmission Flange Bolts (If Equipped) (2.3L)
N800594-S101	4	1	4	Driveshaft To Transmission Flange Bolts (If Equipped) (5.0L)
W500545-S439	3	1	4	Driveshaft To Transmission Flange Bolts
W717822-S439	2	1	4	Driveshaft Center Bearing Bolts (If Equipped)
TA-25-B	As Needed	As Needed		Motorcraft® Threadlock and Sealer (Convertible)
XL-1	As Needed	As Needed		Motorcraft® Penetrating and Lock Lubricant
XL-2	As Needed	As Needed		Motorcraft® High Temperature Nickel Anti-Seize Lubricant

XL-5-A	As Needed	As Needed		Motorcraft® Multi-Purpose Grease Spray
XT-12-QULV	As Needed	As Needed		Motorcraft® MERCON® ULV Automatic Transmission Fluid

Parts - Mustang Transmission Removal And Installation - Parts To Inspect And Replace Only If Necessary

Service Part Number	Claim Quantity	Package Order Quantity	Number in Package	Description
5L7Z-7D285-A	Only If Necessary (2 Possible)	Only If Necessary (1 Possible)	2	Transmission Fluid Cooler Tube Seals
5L7Z-7J324-A	Only If Necessary (2 Possible)	Only If Necessary (1 Possible)	2	Fluid Cooler Tube Backing Rings
JR3Z-4782-B	Only If Necessary (1 Possible)	Only If Necessary (1 Possible)	1	Flex Coupling Driveshaft

Parts - Transit Transmission Removal And Installation

Service Part Number	Claim Quantity	Package Order Quantity	Number in Package	Description
LK4Z-3B498-A	1	1	1	Halfshaft Circlip (AWD)
LK4Z-4B496-A	3	3	1	CV Joint-to-Pinion Flange Cup Bolts And Retaining Straps (AWD)
N800594-S100	4 Or 8 (Flange Dependent)	1 Or 2	4	Driveshaft Flange To Flange Bolts - Refer To The Parts Catalog For The VIN Specific Application
W506434-S439	12	3	4	Lower Load Push Bar Retainers
W520215-S442	4	1	4	Tie Rod End Nut / Front Subframe Forward Nuts (2 Per Application)
W520514-S440	4	4	1	Left And Right Catalytic Converter Nuts
W709176-S300	2	1	4	Splash Shield Push Pins (Step 9, Transit)
W710660-S441	2	1	4	Transmission Support Insulator Nuts
W711076-S442	2	1	4	Lower Ball Joint Nut
W711137-S442	1	1	4	Steering Column Shaft Bolt
W712503-S440	2	2	1	Front Stabilizer Bar Link Rod Nuts
W713078-S439	2 Or 4	1	4	Driveshaft Center Bearing Bolts - Refer To The Parts Catalog For The VIN Specific Application
W715618-S437	4	1	4	Torque Converter Nuts
W716331-S439	4	1	4	Transmission Crossmember Bolts
W718943-S439	2	1	4	Front Subframe Rearward Bolts
W719972-S439	5	2	4	Front Axle Bolts (AWD)
W720688-S439	1	1	4	Front Axle To Transmission Bolt (AWD)
W709653-S303	2	1	4	Front Floor Heat Shield - Pop Rivets
W505264-S442	2	2	1	Driveshaft Safety Strap Bolts (If Equipped)
KK2Z-00811-A	2	2	1	Wheel Hub Nut
W500463-S442	4	1	4	Brake Caliper Anchor Plate Bolt
W719976-S439	2	1	4	Front Axle Tube Bolt
XY-75W140-QL	As Needed	As Needed		Motorcraft® SAE 75W-140 Synthetic Rear Axle Lubricant
VC-13DL-G	As Needed	As Needed		Motorcraft® Yellow Prediluted Antifreeze/Coolant (All Markets Except Canada)
CVC-13DL-G	As Needed	As Needed		Motorcraft® Yellow Prediluted Antifreeze/Coolant (Canada Only)
XG-1-E1	As Needed	As Needed		Motorcraft® Premium Long-Life Grease

XL-5-A	As Needed	As Needed		Motorcraft® Multi-Purpose Grease Spray
XT-10-QLVC	As Needed	As Needed		Motorcraft® MERCON® LV Automatic Transmission Fluid (4WD) (All Markets Except Canada)
CXT-10-LV6	As Needed	As Needed		Motorcraft® MERCON® LV Automatic Transmission Fluid (4WD) (Canada Only)
XT-12-QULV	As Needed	As Needed		Motorcraft® MERCON® ULV Automatic Transmission Fluid

Parts - Transit Transmission Removal And Installation - Parts To Inspect And Replace Only If Necessary

Service Part Number	Claim Quantity	Package Order Quantity	Number in Package	Description
LJ9Z-7J227-A	Only If Necessary (4 Possible)	Only If Necessary (4 Possible)	1	Transmission Fluid Cooler Tube Seals
LK4Z-3A427-A	Only If Necessary (1 Possible)	Only If Necessary (1 Possible)	1	Left Inner CV Joint Halfshaft (AWD)
LK4Z-3A428-A	Only If Necessary (1 Possible)	Only If Necessary (1 Possible)	1	Right Outer CV Joint Halfshaft (AWD)
W718758-S300	Only If Necessary (2 Possible)	Only If Necessary (1 Possible)	4	Engine Block Dowel Pins (3.5L)
W719583-S900	Only If Necessary (2 Possible For 3.5L EcoBoost, 4 Possible For 3.5L Duratec)	Only If Necessary (1 Possible)	4	Catalytic Converter Studs (3.5L) (AWD)
W720627-S900	Only If Necessary (2 Possible)	Only If Necessary (1 Possible)	4	Left Catalytic Converter Studs (3.5L EcoBoost) (AWD)

Parts - Explorer Transmission Removal And Installation

Service Part Number	Claim Quantity	Package Order Quantity	Number in Package	Description
W715131-S442	2	1	4	Transmission Fluid Cooler Tube Bracket Bolts
W700714-S437	2	1	2	Selector Lever Cable Bracket Bolts
W715618-S437	3.3L Requires 4 Pieces, All Others Require 6 Pieces	1 For 3.3L, 2 For All Others	4	Torque Converter Nuts
LB5Z-3B498-A	1	1	1	Axle Pinion Stem Circlip
L1MZ-4A015-B	1	1	1	Front Axle Pinion Stem O-ring
L1MZ-3B478-A	1	1	1	Front Driveshaft Boot Clamp
ML3Z-4421-A	1	1	1	Front Driveshaft Boot
W719511-S439	3 Pieces Required If Driveshaft Is Disconnected At Only One End, 6 Pieces Required If Coupler Or Driveshaft Alignment Bush Are Replaced	1 Or 2	4	Driveshaft Flex Coupling Bolts
W716375-S900	8	2	5	Transfer Case Bolts (4WD)
W719431-S439	RWD Requires 2 Pieces, AWD Requires 3 Pieces	1	4	Transmission Mount Bolts
W520214-S440	1	1	2	Transmission Mount Nut
W721083-S439	4	1	4	Transmission Crossmember Bolts
W719413-S439	2	1	4	Middle Subframe Bolts (3.0L)

W716979-S439	2	1	4	Rear Subframe Bolts (3.0L)
W719699-S442	3.0L Requires 2 Pieces, 3.3L Requires 4 Pieces	2 For 3.0L, 4 For 3.3L	1	Catalytic Converter Nuts
L1MZ-6L612-B	1	1	1	Left Catalytic Converter Gasket (3.0L)
W719698-S900	3.0L Require 2 Pieces, 2.3L Require 3 Pieces	2 For 3.0L, 3 For 2.3L	1	Catalytic Converter Studs
W714265-S442	4	1	4	Catalytic Converter Nuts (3.3L)
XL-5-A	As Needed	As Needed		Motorcraft® Multi-Purpose Grease Spray
XT-12-QULV	As Needed	As Needed		Motorcraft® MERCON® ULV Automatic Transmission Fluid
5L3Z-19A506-A	As Needed	As Needed		Slip Yoke Grease (Grease - Chassis Lubrication)
XG-11	As Needed	As Needed		Motorcraft® High Temperature 4x4 Front Axle and Wheel Bearing Grease
XT-10-QLVC	As Needed	As Needed		Motorcraft® MERCON® LV Automatic Transmission Fluid (4WD) (All Markets Except Canada)
CXT-10-LV6	As Needed	As Needed		Motorcraft® MERCON® LV Automatic Transmission Fluid (4WD) (Canada Only)
XG-1-E1	As Needed	As Needed		Motorcraft® Premium Long-Life Grease

Parts - Explorer Transmission Removal And Installation - Parts To Inspect And Replace Only If Necessary

Service Part Number	Claim Quantity	Package Order Quantity	Number in Package	Description
5L7Z-7D285-A	Only If Necessary (2 Possible)	Only If Necessary (1 Possible)	2	Transmission Fluid Cooler Tube Seals
5L7Z-7J324-A	Only If Necessary (2 Possible)	Only If Necessary (1 Possible)	2	Transmission Fluid Cooler Tube Backing Rings
W525585-S300	Only If Necessary (2 Possible)	Only If Necessary (2 Possible)	1	Engine Block Dowel Pins (3.0L)
W718758-S300	Only If Necessary (2 Possible)	Only If Necessary (1 Possible)	4	Engine Block Dowel Pins (3.3L)
W716963-S900	Only If Necessary (4 Possible)	Only If Necessary (1 Possible)	4	Left And Right Catalytic Converter Studs (3.3L)
L1MZ-4650-A	Only If Necessary (1 Possible)	Only If Necessary (1 Possible)	1	Driveshaft Alignment Bushing
L1MZ-4782-A	Only If Necessary (1 Possible)	Only If Necessary (1 Possible)	1	Flex Coupling
W717822-S439	Only If Necessary (2 Possible)	Only If Necessary (1 Possible)	4	Driveshaft Center Bearing Bracket Bolts
L1MZ-3B498-F	Only If Necessary (1 Possible)	Only If Necessary (1 Possible)	1	Rear Axle Pinion Stem Circlip

Claim Quantity refers to the total number of individual pieces required to repair the vehicle.

Package Order Quantity refers to the amount of the service part number package(s) required to repair the vehicle.

Number In Package refers to the number of individual pieces included in a service part number package.

As Needed indicates the part is necessary but amount of the part may vary and/or is not a whole number. Parts can be billed out as non-whole numbers, including less than 1.

Only If Necessary indicates the part is not mandatory. Refer to the Service Procedure to determine the inspection/inclusion criteria.

Special Tool(s)

VCMM Transmission Extension Kit Rotunda 164-R9534
Pressure Vacuum Transducer Kit Rotunda 164-R9833

Warranty Status: Eligible under provisions of New Vehicle Limited Warranty (NVLW)/Service Part Warranty (SPW)/Service Part New Vehicle (SPNV)/Extended Service Plan (ESP) coverage. Limits/policies/prior approvals are not altered by a TSB. NVLW/SPW/SPNV/ESP coverage limits are determined by the identified causal part and verified using the OASIS part coverage tool.

Labor Times

Description	Operation No.	Time
2021-2022 Mustang 5.0L Coupe/Convertible: Run CDF Test (Pass) (Do Not Use With Any Other Labor Operations)	242254A	0.7 Hrs.
2021-2022 Mustang 5.0L Coupe: Run CDF Test (Fail) Replace CDF Cylinder (Do Not Use With Any Other Labor Operations)	242254B	11.3 Hrs.
2021-2022 Mustang 5.0L Convertible: Run CDF test (Fail) Replace CDF Cylinder (Do Not Use With Any Other Labor Operations)	242254C	12.0 Hrs.
2021-2022 Mustang 2.3L Coupe: Run CDF test (Fail) Replace CDF Cylinder (Do Not Use With Any Other Labor Operations)	242254D	10.4 Hrs.
2021-2022 Mustang 2.3L Convertible: Run CDF test (Fail) Replace CDF Cylinder (Do Not Use With Any Other Labor Operations)	242254E	11.0 Hrs.
2020-2022 Explorer 3.3L/3.0L: Run CDF Test (Pass) (Do Not Use With Any Other Labor Operations)	242254F	0.8 Hrs.
2020-2022 Explorer 4WD 3.3L TiVCT: Run CDF Test (Fail) Replace CDF Cylinder (Do Not Use With Any Other Labor Operations)	242254G	12.4 Hrs.
2020-2022 Explorer 4WD 3.0L EcoBoost: Run CDF Test (Fail) Replace CDF Cylinder (Do Not Use With Any Other Labor Operations)	242254H	11.3 Hrs.
2020-2023 Transit 3.5L TiVCT/3.5L EcoBoost: Run CDF Test (Pass) (Do Not Use With Any Other Labor Operations)	242254J	0.7 Hrs.
2020-2023 Transit RWD 3.5L TiVCT: Run CDF Test (Fail) Replace CDF Cylinder (Do Not Use With Any Other Labor Operations)	242254K	11.4 Hrs.
2020-2023 Transit RWD 3.5L EcoBoost: Run CDF Test (Fail) Replace CDF Cylinder (Do Not Use With Any Other Labor Operations)	242254L	11.4 Hrs.
2020-2023 Transit AWD 3.5L TiVCT: Run CDF Test (Fail) Replace CDF Cylinder (Do Not Use With Any Other Labor Operations)	242254M	14.2 Hrs.
2020-2023 Transit AWD 3.5L EcoBoost: Run CDF Test (Fail) Replace CDF Cylinder (Do Not Use With Any Other Labor Operations)	242254N	14.2 Hrs.
2020-2023 Transit AWD/RWD: Additional Time To Remove And Install Running Boards If Equipped (Can Be Claimed With Operations J-N)	242254P	0.3 Hrs.
2020-2023 Transit AWD/RWD: Additional Time To Check And Correct Front Toe (Can Be Claimed With Operations K-N)	242254Q	1.0 Hrs.
2020-2023 Transit AWD/RWD With Lane Departure Warning: Additional Time To Check And Correct Front Toe Includes Extra Time To Align LDW Camera System (Can Be Claimed With Operations K-N)	242254R	1.4 Hrs.
2022 Expedition/Navigator 4X2/4X4: Run CDF Test (Pass) (Do Not Use With Any Other Labor Operations)	242254S	0.8 Hrs.
2022 Navigator 4X2: Run CDF Test (Fail) Replace CDF Cylinder (Do Not Use With Any Other Labor Operations)	242254T	11.7 Hrs.
2022 Navigator 4X4: Run CDF Test (Fail) Replace CDF Cylinder (Do Not Use With Any Other Labor Operations)	242254U	12.7 Hrs.
2022 Expediton 4X2: Run CDF Test (Fail) Replace CDF Cylinder (Do Not Use With Any Other Labor Operations)	242254V	11.4 Hrs.

2022 Expedition 4X4: Run CDF Test (Fail) Replace CDF Cylinder (Do Not Use With Any Other Labor Operations)	242254W	12.4 Hrs.
2021-2022 F-150 4X2/4X4: Run CDF Test (Pass) (Do Not Use With Any Other Labor Operations)	242254X	0.8 Hrs.
2021-2022 F-150 4X2 2.7L EcoBoost: Run CDF Test (Fail) Replace CDF Cylinder (Do Not Use With Any Other Labor Operations)	242254Y	12.3 Hrs.
2021-2022 F-150 4X4 2.7L EcoBoost: Run CDF Test (Fail) Replace CDF Cylinder (Do Not Use With Any Other Labor Operations)	242254Z	13.1 Hrs.
2021-2022 F-150 4X2 3.5L EcoBoost: Run CDF Test (Fail) Replace CDF Cylinder (Do Not Use With Any Other Labor Operations)	242254AA	11.7 Hrs.
2021-2022 F-150 4X4 3.5L EcoBoost: Run CDF Test (Fail) Replace CDF Cylinder (Do Not Use With Any Other Labor Operations)	242254BB	13.0 Hrs.
2021-2022 F-150 4X4 5.0L TiVCT: Run CDF Test (Fail) Replace CDF Cylinder (Do Not Use With Any Other Labor Operations)	242254CC	12.9 Hrs.
2021-2022 F-150 4X2 5.0L TiVCT: Run CDF Test (Fail) Replace CDF Cylinder (Do Not Use With Any Other Labor Operations)	242254DD	11.6 Hrs.
2021-2022 F-150 4X4 3.3L TiVCT: Run CDF Test (Fail) Replace CDF Cylinder (Do Not Use With Any Other Labor Operations)	242254EE	12.0 Hrs.
2021-2022 F-150 4X2 3.3L TiVCT: Run CDF Test (Fail) Replace CDF Cylinder (Do Not Use With Any Other Labor Operations)	242254FF	11.0 Hrs.

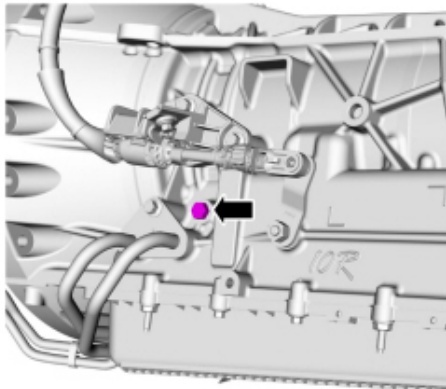
Repair/Claim Coding

Causal Part:	7H351
Condition Code:	42

Service Procedure

1. Install VCMM pressure transducer to transmission line pressure port. (Figure 1)

Figure 1



E240432

NOTE: The line pressure port is an M10X1.0 thread. Do not use a National Pipe Thread (NPT) fitting when installing pressure reading equipment. If an NPT fitting is used, damage to the transmission case will occur.

NOTE: The transmission extension hose kit requires a 1/4 in. Joint Industry Council (JIC) male adapter.

(1). For Explorer, F-150, Mustang, Expedition and Navigator vehicles:

- VCMM Transmission Extension Kit
- Locally obtain the necessary adapter fittings to connect the VCMM pressure transducer to the transmission line pressure port (Figure 2)

Figure 2 - Explorer/F-150/Mustang/Expedition/Navigator

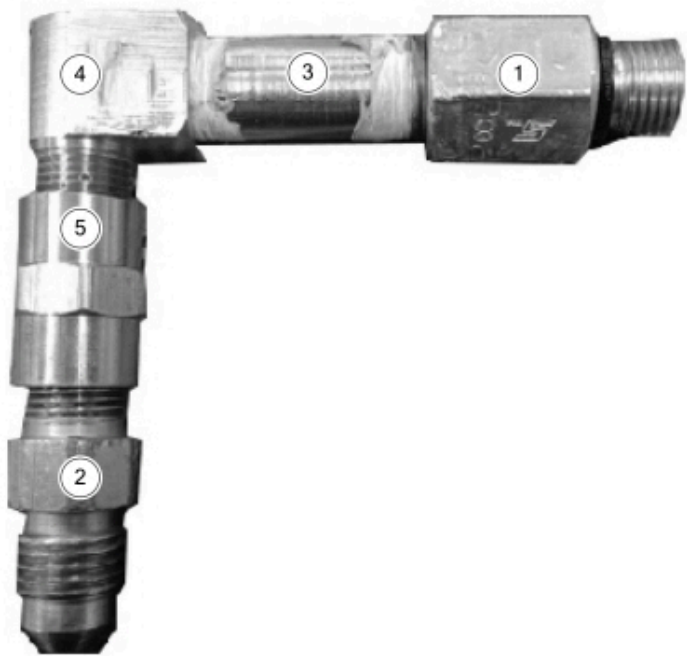


E441751

Item	Description
1	M10X1.0 male to 1/8 in. FNPT female
2	1/8 in. NPT male to 1/4 in. JIC male
3	Extension hose

- (2). For Transit vehicles:
- VCMM Transmission Extension Kit
 - Locally obtain the necessary adapter fittings to connect the VCMM pressure transducer to the transmission line pressure port (Figure 3)

Figure 3 - Transit only



E441595

Item	Description
------	-------------

1	M10X1.0 male to 1/8 in. FNPT female (Adapter #1)
2	1/8 in. NPT male to 1/4 in. JIC male. (Adapter #2)
3	1.5 in. length extension: 1/8 in. NPT male to 1/8 in. NPT male nipple (Adapter #3)
4	90 degree elbow: 1/8 in. NPT male to 1/8 in. NPT female (Adapter #4)
5	1/8 in. NPT female to 1/8 in. NPT female (Adapter #5)

NOTE: All NPT fittings must be assembled with polytetrafluoroethylene (PTFE) tape or paste to prevent leaks

2. Using the latest software level of the appropriate Ford scan tool and VMM VCM, start a session and select the following PIDs.

- LINEDSD #
- VMM PVT Pressure (set scale to +/- 3447 kPa)
- RPM
- RPM_DSD #
- SSA_AMP#
- SSB_AMP #
- SSC_AMP #
- SSD_AMP #
- SSE_AMP #
- SSF_AMP #
- TR_Corrected
- TFT

3. Enter Live Display mode. Verify the vehicle is in park (p), emergency brake applied and TFT is at 50°C (122°F) or above.

- (1). In the settings menu, under the capture tab, set capture timings to duration: 25, pre: 10, post: 15.
- (2). For each step below, highlight the PID to enable it and select #. Then control the PID with up/down arrows.
- (3). Command SSA_AMP #/SSB_AMP #/SSC_AMP #/SSD_AMP #/SSE_AMP #/SSF_AMP # to 0mA.
- (4). Decrease RPM_DSD # between 500-600 rpm.
- (5). Increase LINEDSD # to 1900-2000kPa (275-290 PSI) or maximum achievable pressure below 2000kPa (290 PSI).

NOTE: Actual line pressure reading is expected to be less than commanded line pressure.

- (6). Begin recording.
- (7). Wait 1 second.
- (8). Command SSA_AMP # to 1.0A (five quick up arrow clicks).
- (9). Wait 2 seconds.
- (10). Command SSA_AMP # to 0mA (five quick down arrow clicks).
- (11). Wait for recording to complete (when red icon clears).
- (12). Begin recording again.
- (13). Wait 1 second.
- (14). Command SSC_AMP # to 1.0A (five quick up arrow clicks).
- (15). Wait 2 seconds.
- (16). Command SSC_AMP # PID off to 0mA (five quick down arrow clicks).
- (17). Wait for recording to complete (when red icon clears).
- (18). Test is complete. Release control of all parameters then turn ignition off.

4. Enter Playback mode, then press File Manager.

5. Select the recorded files and enter the VIN and TSB number in the Type Archive Description Text Box, then press the Archive button.

6. Open > FDRS Menu upper right "3-bar" > Go to File Manager > Select recordings by VIN > Select recording and open. Defaults to the last recording taken.

7. Select the file when SSA was commanded.

8. Highlight Ch1-PVT_Pressure > Plot Controls > Increase scale with the "+" 6 clicks. (Figure 4). Triggers and Settings > Settings button > Range Scale adjust High = 2800 and Low = 400 > Ok. (Figures 5-6)

Figure 4

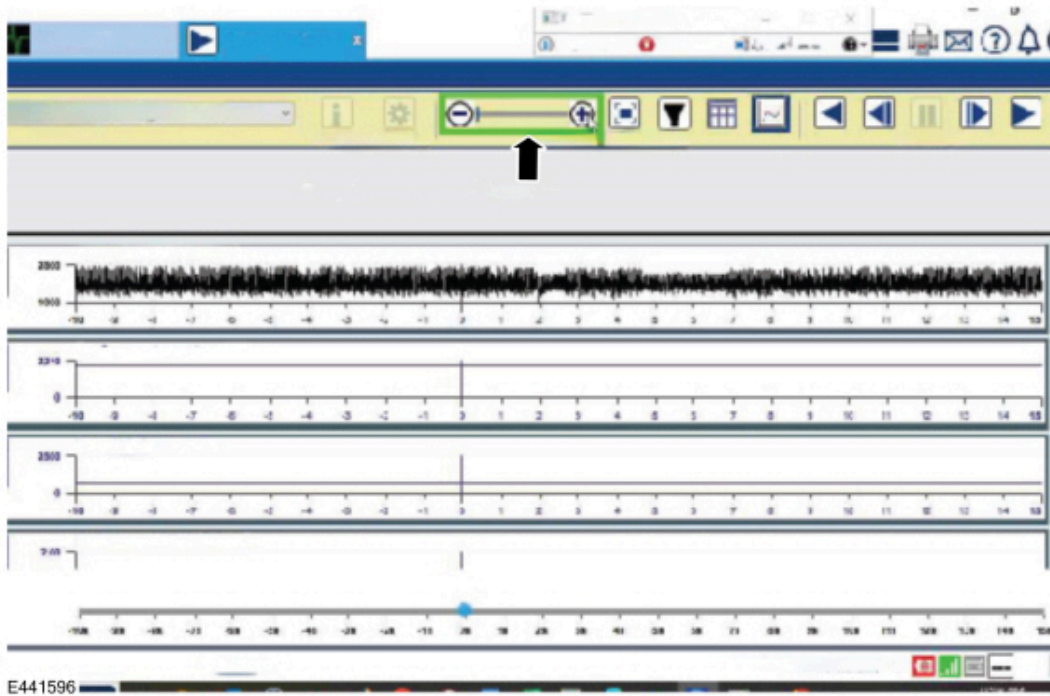


Figure 5

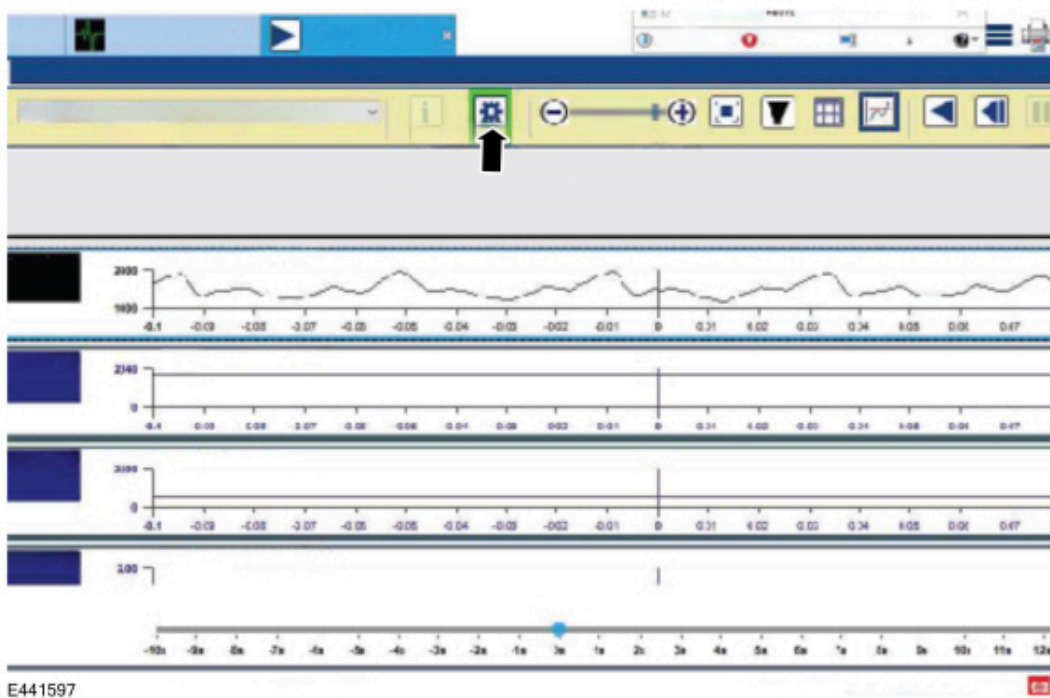
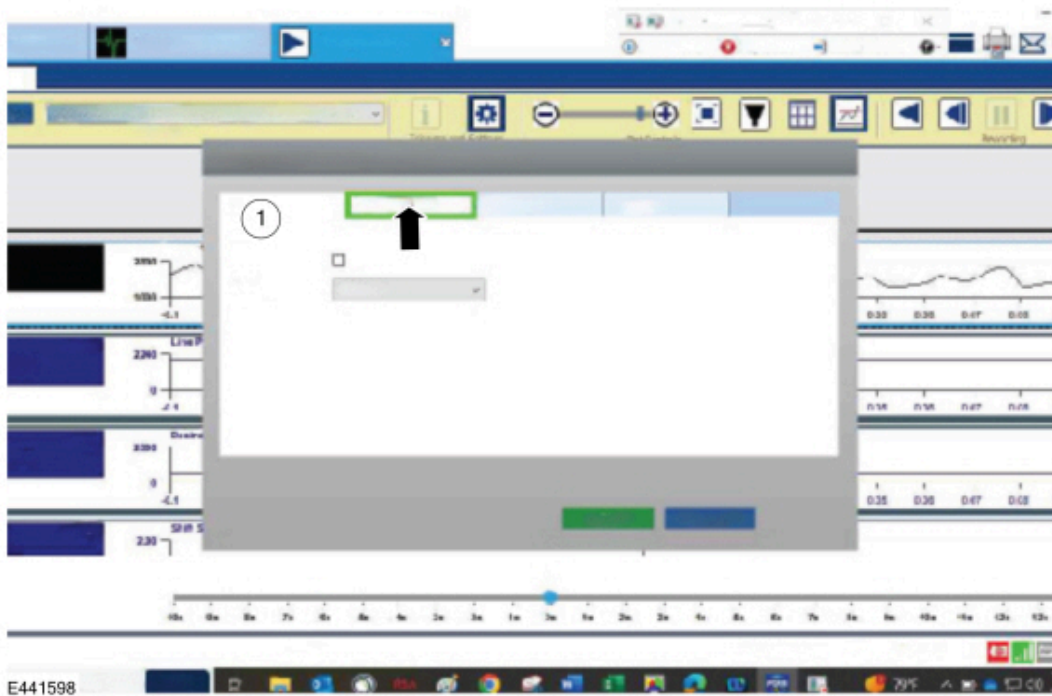


Figure 6



9. Download the CDF calculator tool.

NOTE: The calculator is an ".exe" file type. Make sure the computer firewall is set to allow this type of file to download.

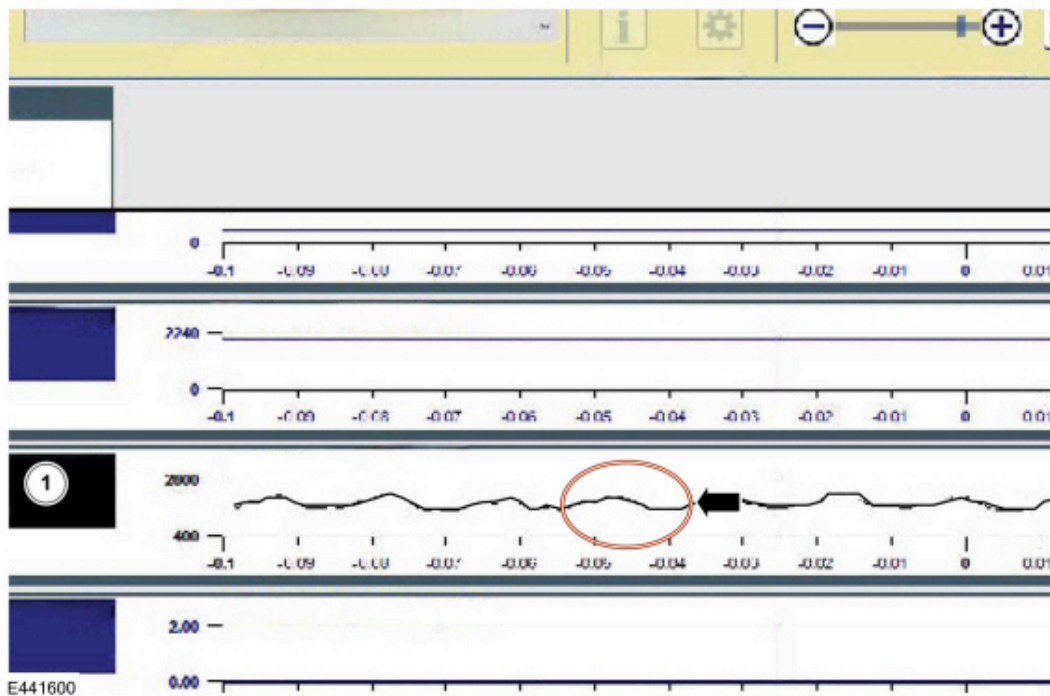
- (1). [Click here to download the CDF calculator tool in English.](#)
- (2). [Click here to download the CDF calculator tool in Spanish.](#)
- (3). [Click here to download the CDF calculator tool in French.](#)

10. Take a measurement when SSA_AMP = 0.00mA of Ch1-PVT_Pressure at any valley (Figure 7) and enter the value into CDF calculator Pre Ramp Valley field. Take a measurement when SSA_AMP = 0.00mA of Ch1-PVT_Pressure at any peak (Figure 8) and enter the value into CDF calculator Pre Ramp Peak field.

Figure 7



Figure 8



11. Adjust recording cursor until SSA_AMP = 1.00mA and then continue 1 additional second.
 - (1). Take a measurement of Ch1-PVT_Pressure at any valley (Figure 7) and enter the value into CDF calculator Applied A Valley field.
 - (2). Take a measurement of Ch1-PVT_Pressure at any peak (Figure 8) and enter the value into CDF calculator Applied A Peak field.
12. File Access > Select the file when SSC was commanded in pulldown menu.
13. Repeat Step 8.
14. Adjust recording cursor until SSA_AMP = 1.00mA and then continue 1 additional second.
 - (1). Take a measurement of Ch1-PVT_Pressure at any valley (Figure 7) and enter the value into CDF calculator Applied C Valley field.
 - (2). Take a measurement of Ch1-PVT_Pressure at any peak (Figure 8) and enter the value into CDF calculator Applied C Peak field.
15. Refer to CDF calculator results – does the “A-clutch Leakage Rate %” field display green?
 - (1). Yes - proceed to Step 16.
 - (2). No (field displays red) - this article does not apply. Refer to WSM, Section 307-01 > Diagnosis and Testing > A Clutch.
16. Does the “C-Clutch vs A-Clutch %” field display green?
 - (1). Yes - this article does not apply. Refer to WSM, Section 307-01 for normal diagnostics.
 - (2). No (field displays red) - proceed to Step 17.
17. Remove the transmission and mount the transmission to the bench. Refer to WSM, Section 307-01.
18. Disassemble the transmission. Perform only the necessary steps to remove the clutch and planetary assembly from the transmission case. Refer to WSM, Section 307-01.
 - (1). It is only necessary to remove the torque converter or the hybrid drive unit, transmission fluid pan and gasket, transmission fluid auxiliary pump (if equipped), fluid filter and main control valve body assembly, all 4 speed sensors (intermediate speed sensor A [ISSA], intermediate speed sensor B [ISSB], TSS and OSS), transmission fluid pump, front support assembly and the clutch and planetary assembly. Refer to WSM, Section 307-01.
19. Disassemble the clutch and planetary assembly. Perform only the necessary steps to remove the CDF clutch cylinder and the No. 3 sun gear shaft and No. 2 ring gear assembly from the clutch and planetary assembly. Refer to WSM, Section 307-01.
 - (1). It is only necessary to remove the A clutch assembly, the selective shim and T3 thrust bearing, remove and discard the 5-input shaft front seals.
 - (2). Remove the No. 1 planetary carrier snap ring, clutch, and planetary container cylinder, the E clutch and input shaft assembly, the No. 3 planetary carrier and No. 3 sun gear, the No. 3 sun gear shaft and No. 2 ring gear assembly. Refer to WSM, Section 307-01.

20. Remove and discard the sun gear No. 3 shaft seals. Install the 4 new sun gear No. 3 shaft seals. Refer to WSM, Section 307-01.
21. Disassemble the C, D and F clutch assemblies from the CDF cylinder. Discard the CDF cylinder. Refer to WSM, Section 307-01.
22. Assemble the C, D and F clutch assemblies into the new CDF clutch cylinder. Refer to WSM, Section 307-01.
23. Perform the C, D and F clutch pack endplay measurements for proper clearance. Refer to WSM, Section 307-01.
24. Remove and discard the input shaft-to-sun gear No. 3 shaft seals. Install the 5 new input shaft-to-sun gear No. 3 shaft seals. Refer to WSM, Section 307-01.
25. Remove and discard the input shaft seal. Install the new input shaft seal. Refer to WSM, Section 307-01.
26. Install the 5 new input shaft front seals. Refer to WSM, Section 307-01.
27. To reassemble the clutch and planetary assembly, reverse the disassembly procedure. Refer to WSM, Section 307-01.
28. Perform the T3 thrust bearing measurement to set transmission front end clearance. Refer to WSM, Section 307-01.
29. Reassemble the transmission. Refer to WSM, Section 307-01.
30. Install the transmission. Refer to WSM, Section 307-01.
31. Perform an adaptive learning drive cycle. Refer to WSM, Section 307-01.

NOTE: Advise the customer that this vehicle is equipped with an adaptive transmission shift strategy which allows the vehicle's computer to learn the transmission's unique parameters and improve shift quality. When the adaptive strategy is reset, the computer will begin a relearning process. This relearning process may result in firmer than normal upshifts and downshifts for several days.

© 2024 Ford Motor Company

All rights reserved.

NOTE: The information in Technical Service Bulletins is intended for use by trained, professional technicians with the knowledge, tools, and equipment to do the job properly and safely. It informs these technicians of conditions that may occur on some vehicles, or provides information that could assist in proper vehicle service. The procedures should not be performed by "do-it-yourselfers". Do not assume that a condition described affects your car or truck. Contact a Ford or Lincoln dealership to determine whether the Bulletin applies to your vehicle. Warranty Policy and Extended Service Plan documentation determine Warranty and/or Extended Service Plan coverage unless stated otherwise in the TSB article. The information in this Technical Service Bulletin (TSB) was current at the time of printing. Ford Motor Company reserves the right to supersede this information with updates. The most recent information is available through Ford Motor Company's on-line technical resources.