

Hide Details

Coding Information

<b>Copy Link</b> 	<b>Copy Relative Link</b> 	<b>Bookmark</b>  <a href="#">View My Bookmarks</a>	<b>Add to Favorites</b> 	<b>Print</b> 	<b>Provide Feedback</b> 	<b>Helpful</b>  8	<b>Not Helpful</b>  0
----------------------	-------------------------------	--	-----------------------------	------------------	-----------------------------	-------------------------	-----------------------------

**Title:** Cab Door Mirrors Upper Mounting Hardware Concerns

**Applies To:** MV, HV, RH, LT, HX

## CHANGE LOG

Please refer to the change log text box below for recent changes to this article:

08/15/2024 - Initial Article Release
--------------------------------------

## DESCRIPTION

This document will guide the user through installing the upper mounting hardware in place of the missing C-loop and/or look-down mirrors. This document will also cover repairing the upper threaded M8 holes in the cab door in case of a strip-out or damaged thread.

**Reference Documents:** Latest Revision of Sales Letter G-6619; MEKRA Lang Mirror Options

## SYMPTOM(s)

**Dealer/TEM Observations or Concerns:** On trucks delivered without C-loop and/or look-down mirrors due to extended supplier part shortages, there may be instances where a truck leaves the plant with loose or missing hardware that should be located at the top of the cab doors. The hardware may be missing, loose, damaged, or have tape over the hole in place of the hardware. All these situations are not correct.

These two images are examples of the missing or improper hardware installation:



These two images are examples of the correct hardware that is properly installed:



## **SPECIAL TOOL(S) / SOFTWARE**

The only special tools that may be needed is the Rivnut Install tool if the M8 hole is damaged and a Rivnut repair is needed. These are the items needed to complete that repair.

Tool Description	Tool Number	Comments	Instructions
8mm Drill Bit			M8 tread clean out.
13.5mm Drill Bit			Drill out damaged threads.
M8 Rivnut	3625511C1	Available in the parts catalog	Insert into the prepared hole.
Rivnut Install Tool		Various tool options are available	Follow tool manufacturer instructions to crimp Rivnut into the prepared hole.
1/2"- 90° Countersink bit			Use to clean up damaged M8 hole surface.

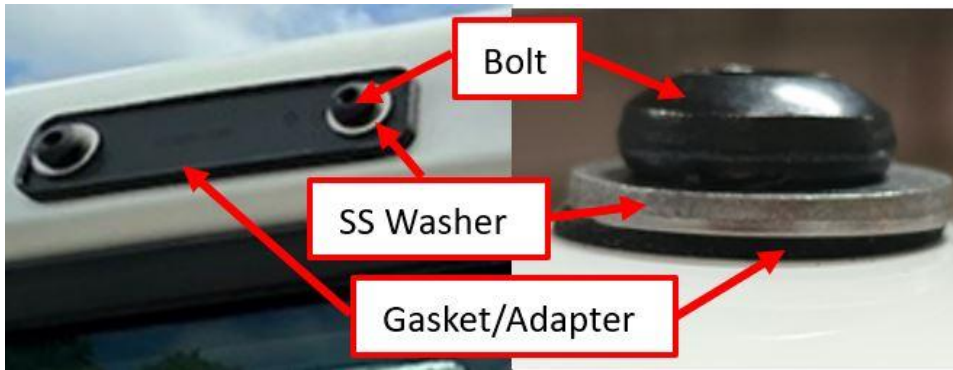
## **SERVICE PARTS INFORMATION**

C-Loop Mirror Upper Mounting Hardware	Part Number	Quantity Required	Notes
Bolt, Special SS Black M8-1.25mm X 30MM	3588152C1	2 each	2 each per cab door (Left/Right)
Washer, Grab Handle Mtg SS	3542142C1	2 each	2 each per cab door (Left/Right)
Gasket, Grab Handle, Adapter Plate Fitting	3552442C2	2 each	2 each per cab door (Left/Right)

Look Down Mirror Upper Mounting Hardware	Part Number	Quantity Required	Notes
Bolt, Special SS Black M8-1.25mm X 30MM	3588152C1	2 each	Right Side Cab Door Only
Washer, Grab Handle Mtg SS	3542142C1	2 each	Right Side Cab Door Only
Adapter, Lookdown Mirror, Horizon	4054697C1	1 each	Right Side Cab Door Only

## **DIAGNOSTIC STEP(S)**

Inspect both Cab doors for proper installation of upper mirror hardware for trucks that should have C-loop door mirrors and a right-side look-down mirror but received a door pedestal mirror as a replacement. The upper mounting holes for the C-loop and look-down mirrors should still be in the doors and should have hardware installed to close the threaded hole in the door. The hardware should be installed in the following order with the gasket/adaptor against the cab, the SS washer between the gasket/adaptor, and the bolt head as shown below. (look-down mirror will be right cab door only)



## REPAIR STEP(s)

**WARNING!** To prevent property damage, personal injury, and / or death, park vehicle on a hard, flat surface, turn the engine off, set the parking brake, and install wheel chocks to prevent the vehicle from moving in either direction.

**WARNING!** To prevent property damage, personal injury, and / or death, if the vehicle must be raised, do not work under the vehicle supported only by jacks. Jacks can slip or fall over.

**WARNING!** To prevent personal injury and / or death, always wear safe eye protection when performing vehicle maintenance.

**WARNING!** To prevent property damage, personal injury, and / or death, keep flames or sparks away from vehicle and do not smoke while servicing the vehicle's batteries. Batteries expel explosive gases.

**WARNING!** To prevent property damage, personal injury, and / or death, remove the ground cable from the negative terminal of the battery box before disconnecting any electrical components. Always connect the ground cable last.

### If the hardware is missing or loose:

Note: These upper mounting holes in the cab doors are a special "Flow Drill" M8 thread and cannot be over-torqued.

**Step 1:** Remove any tape and clean the door of tape residue before installing the hardware.

**Step 2:** Install the gasket/adaptor, ss washer, and bolt in the order shown above and torque to **10 N-m (7 ft-lbs)** in all locations.

### If a threaded hole becomes damaged beyond use a Rivnut will have to be installed:

**Step 1:** Drill damaged threads using an 8mm drill bit.

**Step 2:** Remove any raised edge at the top of the hole with a 1/2"- 90° Countersink bit. This preps the hole for the next step.

**Step 3:** Drill out the door skin using a 13.5mm drill bit; maintain the original hole center location as best as possible. Deburr the new hole diameter.

**Step 4:** Seal all bare metal edges with high-quality paint or similar sealant to prevent future corrosion of door skin.

**Step 5:** Insert and crimp M8 Rivnut into place. Follow the tool manufacturer's instructions for proper installation so the Rivnut is fully crimped onto the cab door skin.

## WARRANTY INFORMATION

### Warranty Claim Coding:

Refer to the [Warranty Coding Manual](#) for Group and Noun Codes.

### Standard Repair Time(s):

Refer to the [SRT Manual](#) for Repair Times

## OTHER RESOURCES

[Master Service Information Site](#)

Hide Details

Feedback Information

Viewed: 124

Helpful: 8

Not Helpful: 0

No Feedback Found