

WORK DESCRIPTION FOR FIELD MEASURE

Code: 24P6392005

Version: 2.0

Check left and right side walls under roof trim bar

Model 236

Check/Test Procedure

i The check/test procedure must be performed on both sides of the vehicle.

1. Remove or release the roof trim bar from the rear to the B-pillar.

i For basic data, see AR67.30-P-0007WEC, operation step 5.

2. Check the rear area (A, Figure 1) of the side wall for paint damage:

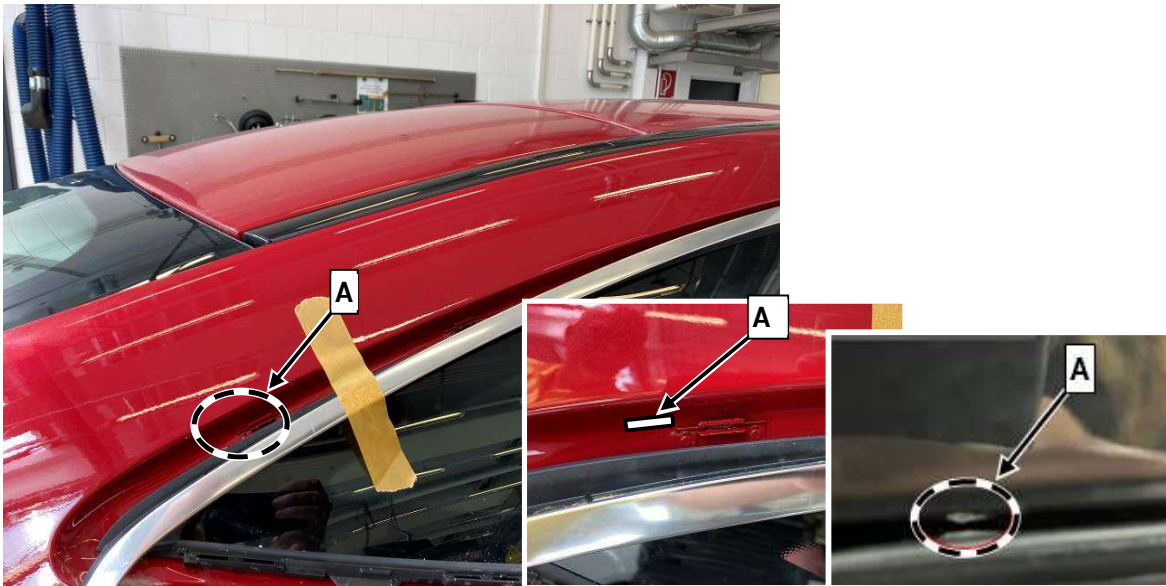


Figure 1 (shown on passenger side of vehicle)

- a. Paint damage present (A, Figure 1): Carry out **Work Procedure**.
- b. Paint damage (A, Figure 1) **not** present: **End measure**.

Work Procedure

1. Rework paint damage using a touch-up paint pen and ensure anticorrosion protection.
i Observe MB specifications and manufacturer specifications.
2. Mask off transition from retaining tab to roof trim bar by means of an intermediate layer (3M protective film) prior to installation to prevent further damage when reinstalling the trim bar (B, Figure 2).



Figure 2

3. Assemble in reverse order.

Parts

Quantity	Designation	Part no.
2	Intermediate layer	A 204 889 19 95
1	Touch-up paint pen	A 000 986 27 50 09
1*	Parts kit for touch-up paint pen	A 000 986 23 50 11 9197

*The required parts must be determined according to the equipment variant for the chassis number via the parts job in the XENTRY portal.

- i Small parts such as screws, lock nuts, sealing rings, cable ties, fluids, sealant, etc. are not listed in the parts list. The required small parts are taken into account in the budgeting.

Operation text and flat rate

Operation no.	Operation text	Flat rate	Accounting no./ damage code
12-2182	Check body under roof trim bar for paint damage (both sides of vehicle)	0.4 h	63 920 05
12 2183*	Repair paint under roof trim bar and rework roof trim bar (after check)	0.2 h	63 920 05

* The operation item is to be repeated as often as necessary.