



# TECHNICAL SERVICE BULLETIN

<b>ISSUE DATE:</b>	11/08/2023
<b>SERVICE BULLETIN SUBJECT:</b>	400V E2Ver2 Body 60.10.00 Software Update
<b>VINs or MODELS AFFECTED:</b>	Service Specified Buses
<b>COMPLETE BY:</b>	Next Service Opportunity
<b>SERVICE BULLETIN #:</b>	SC-23-147
<b>LABOR OPERATION CODE:</b>	EN65Z

**NOTICE! It is expected that this process may require up to .5 hour per bus. Please schedule appropriately to minimize vehicle downtime.**

## 400V E2Ver2 Body 60.10.00 Software Update

### Description:

The procedure describes the process of updating the body controller to remove a 2.5 second delay to a door open request.

## Tools/Parts Required:

### Tools and Supplies Required:

T-30 Torx Driver	
Customer Service Laptop With Proterra Diagnostic Tool	
Nexiq USB Link2 Device	

### Kit Parts Required:

Kit PN	Kit Name	
066090	SOFTWARE, BODY CONTROLLER 400V ZR32A, V60.10X00 Firmware	

Software Package ZIP Link:

<https://proterra.my.salesforce.com/sfc/p/50000000BNPQ/a/UV0000000i4H/x1QIxWmQtsq46GZ1PVwTkPwKcj3EYiPYSor37toUHOo>

Password: IgJGRqut

## Procedure:

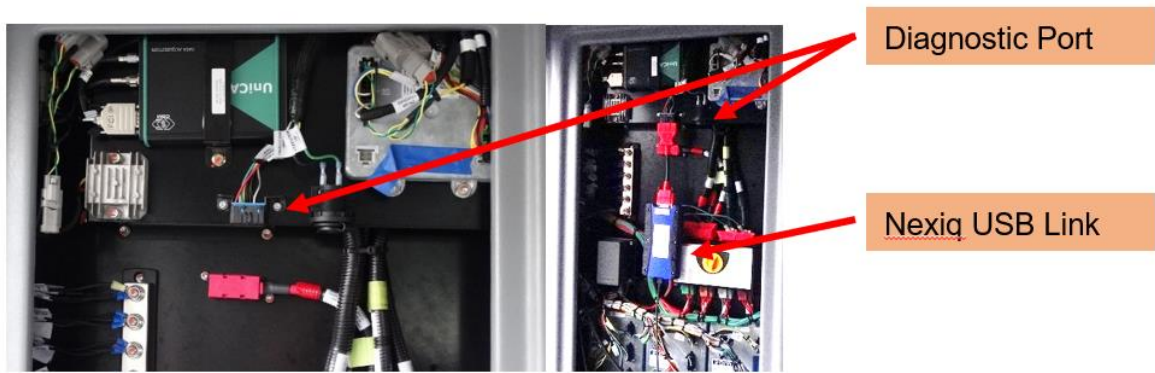
1. Turn ON the 12/24V rear Vehicle Master Disconnect located behind the vehicle curbside rear charge port access panel.
2. Turn ON the bus Master Run Switch at the Driver's Workplace and ensure the Dash screen is ON to display "KEY ON".
  - a. This places the vehicle into Key On / Low Voltage state for controller versions to be checked prior to software flash.
3. Using a T30 Torx screwdriver or appropriate tools, remove the two access covers.
  - a. Street side wheel well electronics cabinet (ECAB) panel for access to the OBDII Port



- b. Rear deck access panel for OBDII Diagnostic port (NOTE: on E2-35 foot buses this is located behind the rear barn doors on the left hand side).
4. Power up (boot) the Proterra-supplied laptop containing the Proterra Diagnostic Tool.
5. Connect the Nexiq USB Link2 device to the laptop and to the appropriate OBDII Diagnostic Port.



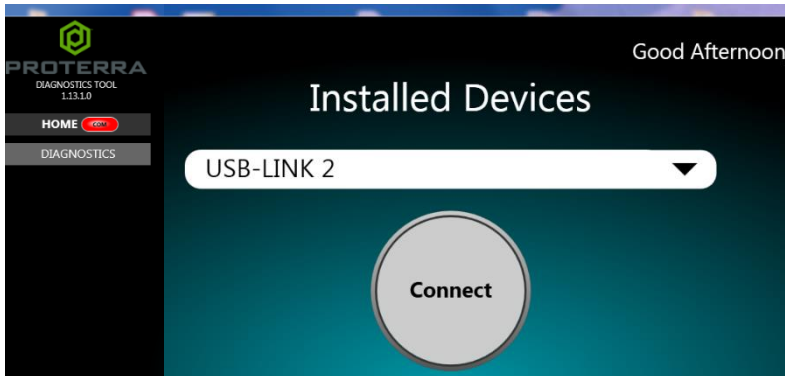
6. For example, here is the Nexiq USB Link connected to the Diagnostic Port located on the street side wheel well electronics cabinet (eCab).



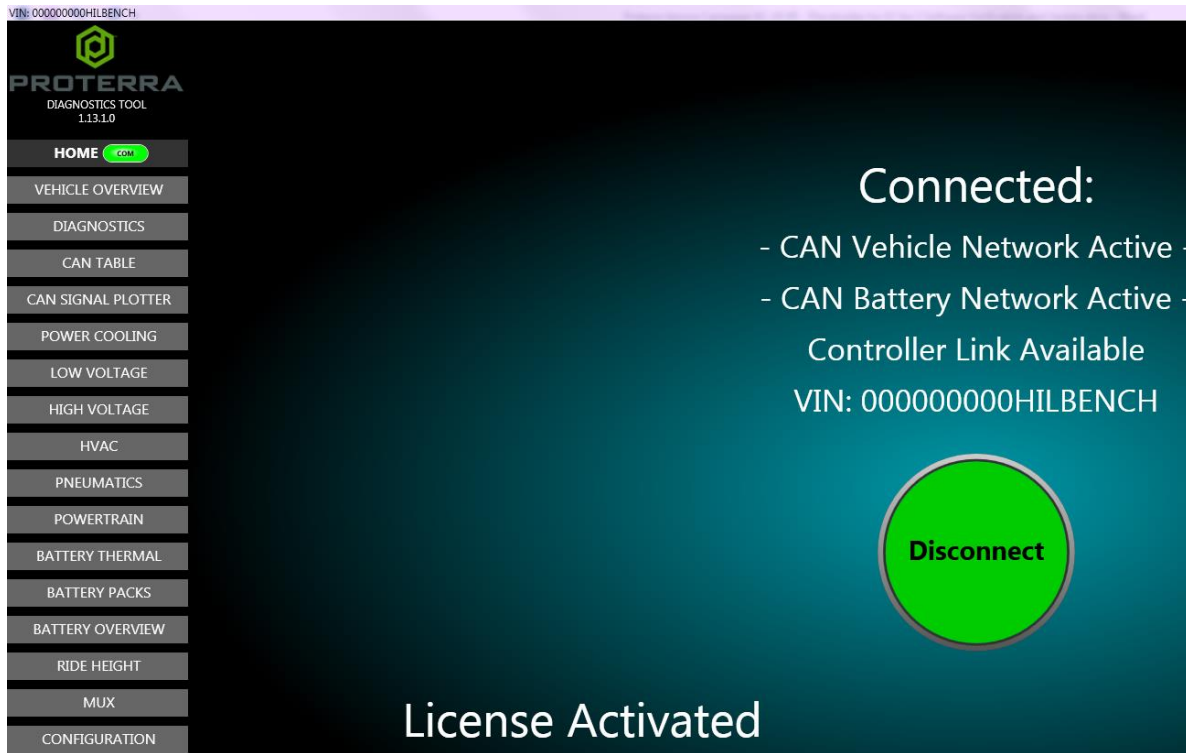
7. On the laptop, double-click on the Proterra Diagnostics Tool software icon to start the software.



8. When the program opens, read and click OK for the prompt.
9. On the Home tab, select the appropriate device from the drop down and click "Connect".



10. Once the diagnostic tool has connected to the vehicle, you will have a VIN number and connection status displayed on the home screen, and tabs available to navigate.



## Update Body Controller Software

This procedure updates the Body Controller software version and maintains the body controller parameter configuration data across the flash download of new software.

11. Ensure you have the latest software file “CatalystBody\_60\_10x00\_Arena066090” in a known location on the service technician’s computer (Folder or Desktop).  
**IMPORTANT! NEVER** access the software from a remote server or from a USB memory device, **ALWAYS** copy the software files to your computer hard drive and access the software from this location.
12. Turn **ON** the 12/24V rear Vehicle Master Disconnect located behind the vehicle curbside rear upper access panel
13. Turn **OFF** the bus Master Switch at the Driver's Workplace and ensure the Dash screen is **OFF**.
14. Turn **ON** the bus “programming switch” inside the **street side** wheel well box.
15. After connecting to the vehicle using the Proterra Diagnostic tool at the **front OBDII Port (SSWW Ecab)**, navigate to the Configuration Tab.

16. Wait at least 10 seconds after starting the tool, then click the “Get Parameters” button at the top of the page.
  - a. **NOTE: This ensures that we have a backup copy of the original configuration parameters stored in a “zip” file, contained in the C:/Logs folder on your computer in case you have to refer to it later.**

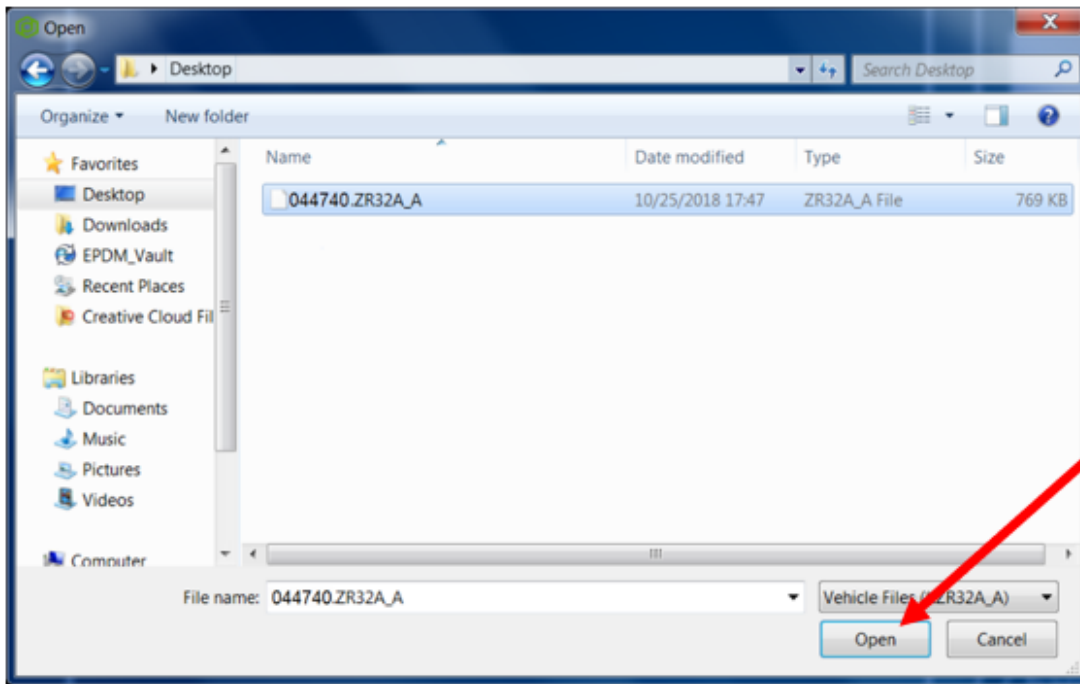
Name	Access Level	Value
High Voltage Connection S	1	3
Daylight Savings Time Activ	1	1
Fire Detection System Lock	1	0
Pnumatic Leakage Rate Au	4	0
Main Electronics Pump Run	4	127
Lower Battery Pump Run Ti	4	0
Air Compressor Run Timer	4	0
Pnumatic Leakage Rate Pri	4	0
DCDC Enable Swap	1	1
Electric Doors Detected	1	0
Collision Alert System Dete	1	1

17. Now we are ready to click the Body Firmware “Start Flash” Button.

Beside Body Firmware, Click Start Flash

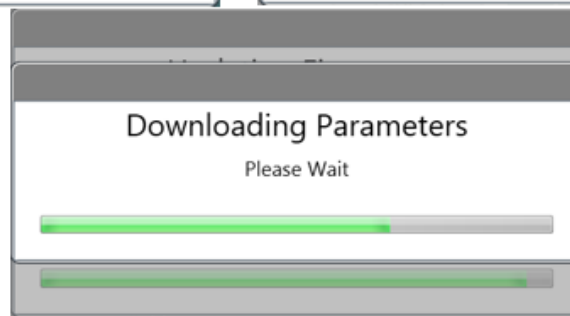
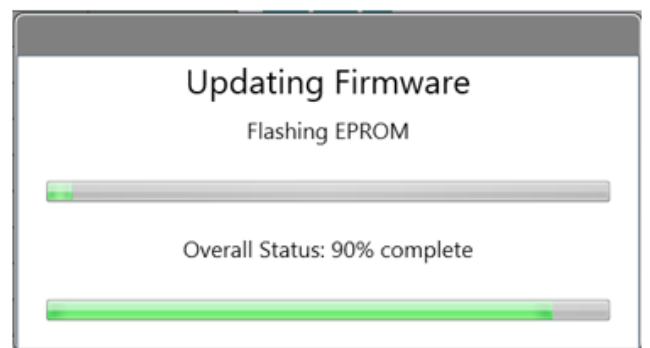
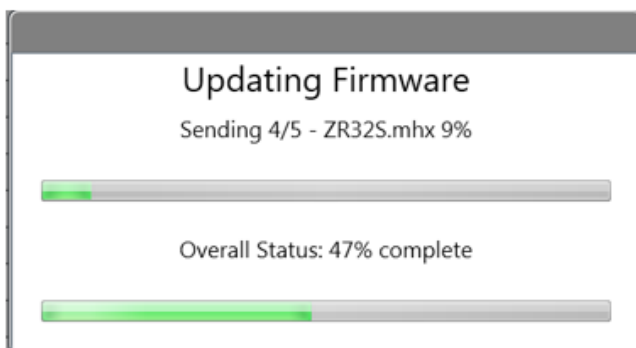
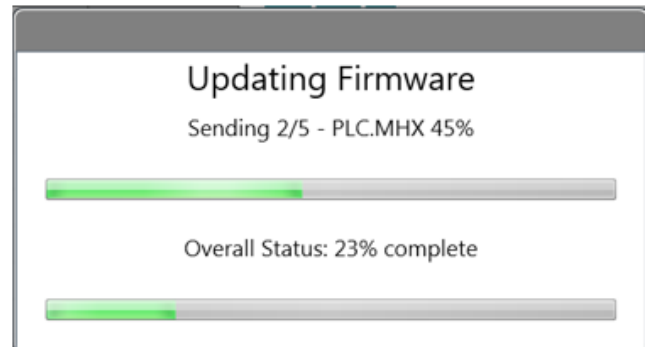
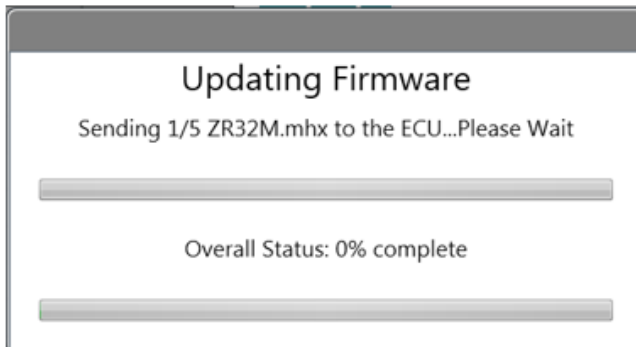
18. The following screen will be displayed. Navigate to the location where you stored the configuration file earlier. Select the software file downloaded previously and click “Open” to load the file.

**Note:** The file name displayed should be “CatalystBody\_60\_10x00\_Arena066090”.

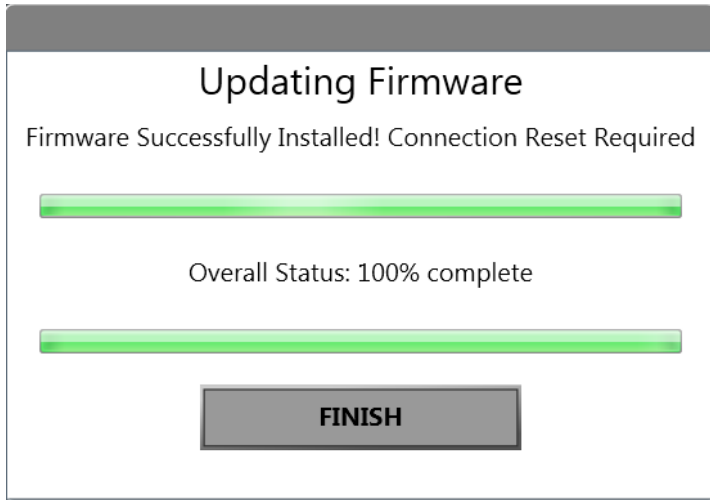


Select the file and  
Click Open

19. The Proterra Diagnostic Tool will connect to the device, and the following screens are displayed.



20. The software update will take several minutes to complete. When the update is complete the following screen will be displayed. Click the “Finish” button to complete the update process.



21. Turn off the vehicle at the rear master switch.