

GENERAL MOTORS  
DCS6982  
URGENT - DISTRIBUTE IMMEDIATELY

Date: August 14, 2024

Subject: REVISION: A242435780-01 – Emission Recall  
Engine Spark Timing Following Auto Stop Event  
Revised Model Section

Models: 2024 Buick Encore GX  
2024 Buick Envista  
2024 Chevrolet Trailblazer  
2024 Chevrolet Trax  
Equipped with 1.2L Gas Engine (RPO LIH)

This bulletin is being revised to add the 2024 Buick Encore GX. Please discard all previous copies of A242435780.

The Stock VIN list of vehicles in dealer inventory is attached to this message.  
Note: this list is only accurate at the time of report creation and all VINs should be validated in IVH prior to repair.

END OF MESSAGE

# Emission Recall

## A242435780 Engine Spark Timing Following Auto Stop Event



**Release Date:** August 2024

**Revision:** 01

**Revision Description:** This bulletin is being revised to add the 2024 Buick Encore GX. Please discard all previous copies of A242435780.

Make	Model	Model Year		RPO	Description
		From	To		
Buick	Encore GX	2024	2024	LIH	1.2L Gas Engine
Buick	Envista				
Chevrolet	Trailblazer				
Chevrolet	Trax				

Involved vehicles are marked “Open” on the Investigate Vehicle History screen in GM Global Warranty Management system. This site should always be checked to confirm vehicle involvement prior to beginning any required inspections and/or repairs.

<b>Condition</b>	General Motors has decided to conduct a Voluntary Emission Recall involving certain 2024 model year Chevrolet Trax, Trailblazer and Buick Encore GX and Envista vehicles with a 1.2L engine. The engine control module may not properly control engine ignition timing following certain Auto Engine Stop/Start events. If this were to occur, the Malfunction Indicator Lamp (Check Engine Light) would illuminate, and the engine may run rough or knock. In some cases, if the vehicle is driven with engine knock, engine damage could occur. Proper engine ignition timing control will resume following a subsequent Auto Engine Stop/Start event.
<b>Correction</b>	Dealers are to reprogram the Engine Control Module.

### Parts

No parts are required for this repair.

### Warranty Information

Labor Operation	Description	Labor Time	Trans. Type	Net Item
9107335*	Verified Module Software or Calibration Level: Module Is Programmed with Same Level Software or Calibration	0.2	ZFAT	N/A
9107336*	Engine Control Module Reprogramming with SPS	0.3		

**Important:** \* To avoid warranty transaction rejections, carefully read and follow the instructions below:

Labour Time [\[Top\]](#)

Labour Operation Code:

Additional labour op code information:

SPS Warranty Claim Code:

6125814

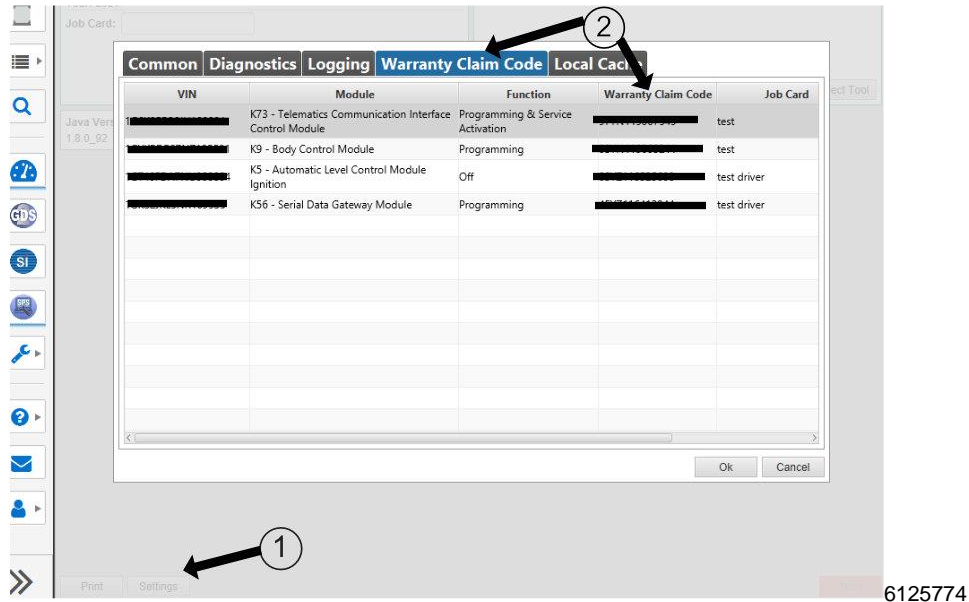
- The Warranty Claim Code from the programming event must be accurately entered in the “Warranty Claim Code” field of the transaction.
- When more than one Warranty Claim Code is generated for a programming event, it is required to document all Warranty Claim Codes in the “Correction” field on the job card. Dealers must also enter one of the codes in the “Warranty Claim Code” field of the transaction, otherwise the transaction will reject. It is best practice to enter the FINAL code provided by SPS2.

# Emission Recall

## A242435780 Engine Spark Timing Following Auto Stop Event



### Warranty Claim Code Information Retrieval



If the Warranty Claim Code was not recorded on the Job Card, the code can be retrieved in the SPS2 system as follows:

1. Open TLC on the computer used to program the vehicle.
2. Select and start SPS2.
3. Select Settings (1).
4. Select the Warranty Claim Code tab (2).

The VIN, Warranty Claim Code and Date/Time will be listed on a roster of recent programming events. If the code is retrievable, dealers should resubmit the transaction making sure to include the code in the SPS Warranty Claim Code field.

### Service Procedure

**Caution:** Before downloading the update files, be sure the computer is connected to the internet through a network cable (hardwired). DO NOT DOWNLOAD or install the files wirelessly. If there is an interruption during programming, programming failure or control module damage may occur.

**Note:** Carefully read and follow the instructions below.

- Ensure the programming tool is equipped with the latest software and is securely connected to the data link connector. If there is an interruption during programming, programming failure or control module damage may occur.
- Stable battery voltage is critical during programming. Any fluctuation, spiking, over voltage or loss of voltage will interrupt programming. Install a GM Authorized Programming Support Tool to maintain system voltage. Refer to [www.gmdesolutions.com](http://www.gmdesolutions.com) for further information. If not available, connect a fully charged 12V jumper or booster pack disconnected from the AC voltage supply. DO NOT connect a battery charger.
- Follow the on-screen prompts regarding ignition power mode, but ensure that anything that drains excessive power (exterior lights, HVAC blower motor, etc) is off.
- Please verify that the radio time and date are set correctly before inserting USB drive into vehicle for programming, otherwise an error will result.
- Clear DTCs after programming is complete. Clearing powertrain DTCs will set the Inspection/Maintenance (I/M) system status indicators to NO.

# Emission Recall

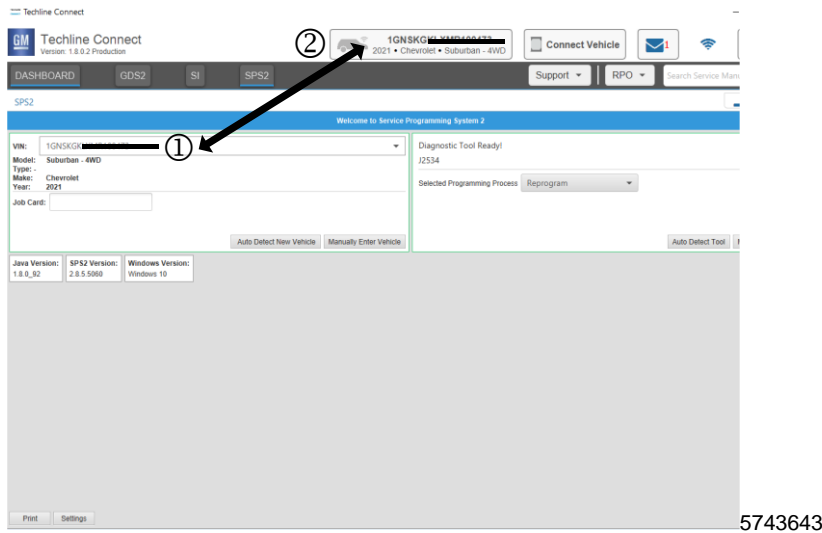
## A242435780 Engine Spark Timing Following Auto Stop Event



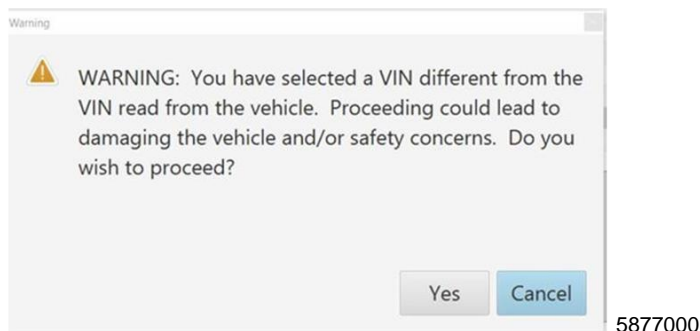
**Important:** The service technician always needs to verify that the VIN displayed in the TLC left side drop down menu and the top center window match the VIN plate of the vehicle to be programmed prior to using Service Programming System 2 (SPS2) for programming or reprogramming a module.

- For the TLC application, service technicians need to always ensure that the power mode (ignition) is “ON” before reading the VIN from the vehicle’s VIN master module and that they do not select a VIN that is already in the TLC application memory from a previous vehicle.
- If the VIN that shows up in the TLC top center window after correctly reading the VIN from the vehicle does not match the VIN plate of the vehicle, manually type in the VIN characters from the vehicle VIN plate into the TLC top center window and use these for programming or reprogramming the subject module with the correct vehicle VIN and software and/or calibrations.
- The Engine Control Module (ECM) is the master module (for VIP vehicles) that TLC reads to determine the VIN of the vehicle. If the VIN read from the vehicle by TLC does not match the VIN plate of the vehicle, the ECM also needs to be reprogrammed with the correct VIN, software and calibrations that match the vehicle’s VIN plate.
- The Body Control Module (BCM) is the master module (for GEM vehicles) that TLC reads to determine the VIN of the vehicle. If the VIN read from the vehicle by TLC does not match the VIN plate of the vehicle, the BCM also needs to be reprogrammed with the correct VIN, software and calibrations that match the vehicle’s VIN plate.

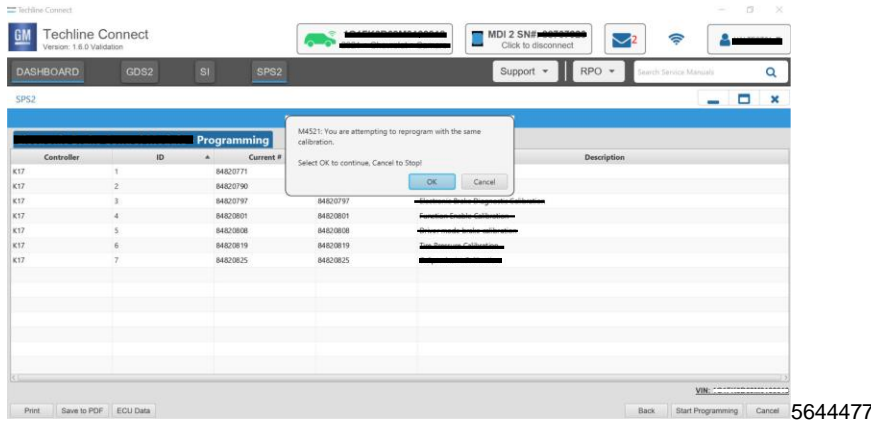
**Caution:** Be sure the VIN selected in the drop down menu (1) is the same as the vehicle connected (2) before beginning programming.



**Important:** If the vehicle VIN DOES NOT match, the message below will be shown.



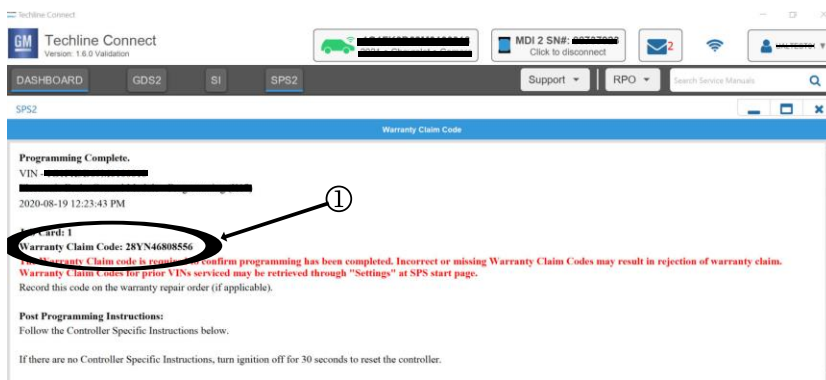
# Emission Recall A242435780 Engine Spark Timing Following Auto Stop Event



**Important:** Techline Connect screens shown above.

**Important:** If the same calibration/software warning is noted on the TLC Summary screen, select OK and follow screen instructions. After a successful programming event, the WCC is located in the Service Programming System dialogue box of the SPS Summary screen. No further action is required. Refer to the Warranty section of the bulletin.

1. Reprogram the Engine Control Module. Refer to *K20 Engine Control Module: Programming and Setup* in SI.



5644478

**Note:** The screenshot above is an example of module programming and may not be indicative of the specific module that is being programmed. Module selection and VIN information have been blacked out.

**Important:** To avoid warranty transaction rejections, you **MUST** record the warranty claim code provided on the Warranty Claim Code (WCC) screen shown above on the job card. Refer to callout 1 above for the location of the WCC on the screen.

2. Record SPS Warranty Claim Code on job card for warranty transaction submission.
3. CALIFORNIA, COLORADO, CONNECTICUT, DELAWARE, MAINE, MARYLAND, MASSACHUSETTS, NEW JERSEY, NEW YORK, OREGON, RHODE ISLAND, VERMONT, WASHINGTON VEHICLES ONLY: Install a Recall Identification Label upon recall completion. See General Motors Service Policies and Procedures Manual, Recall Identification Label, for details.
4. CALIFORNIA VEHICLES ONLY: Complete a "Proof of Correction" certificate and provide to the vehicle owner upon recall completion. For the recall number on the "Proof of Correction" certificate, enter only the six digits in characters 4-9 of this recall bulletin number: 243578.

## Dealer Responsibility

All new, used, GM Certified Pre-Owned (CPO), courtesy transportation vehicles, dealer shuttle vehicles, CarBravo, etc. in dealers' possession and subject to this recall must be held and inspected/repared per the service procedure of this bulletin before customers take possession of these vehicles. Involved vehicles must be held and not delivered to customers, dealer-traded, released to auction, used for demonstration, or any other purpose.

All GM Certified Pre-Owned (CPO) vehicles currently in the dealers' inventory within the SHIFT Digital system will be de-certified and must be held and remedied per the service procedure in this bulletin. Upon submitting an accepted/paid

# Emission Recall

## A242435780 Engine Spark Timing Following Auto Stop Event



warranty transaction in the Global Warranty Management (GWM) system, the vehicle can be re-certified for sale within the SHIFT Digital system, or once again be used in the Courtesy Transportation Program.

Dealers are to service all vehicles subject to this recall at no charge to customers, regardless of mileage, age of vehicle, or ownership, from this time forward.

Customers who have recently purchased vehicles sold from your vehicle inventory, and for which there is no customer information indicated on the dealer listing, are to be contacted by the dealer. Arrangements are to be made to make the required correction according to the instructions contained in this bulletin. A copy of the customer letter is provided in this bulletin for your use in contacting customers. Recall follow-up cards should not be used for this purpose, since the customer may not as yet have received the notification letter.

In summary, whenever a vehicle subject to this recall enters your vehicle inventory you must take the steps necessary to ensure the program correction has been made before selling the vehicle. In addition, for vehicles entering your facility for service, you are required to ensure the customer is aware of the open recall and make every reasonable effort to implement the program correction as set forth in this bulletin prior to releasing the vehicle.

### \*\*\*THE FOLLOWING 2 PARAGRAPHS ARE NOT FOR CANADA OR EXPORT\*\*\*

When a California emissions recall is completed by a GM dealer, the dealer must provide the vehicle owner a "Proof of Correction Certificate" which the owner may need to present to the California Department of Motor Vehicles (DMV) when renewing their vehicle registration. Without this correction certificate, the owner may be unable to renew their vehicle registration.

Additional Certificates can be obtained, at no charge, from the 1Store application in GlobalConnect. Request GM Item Number 1825 when ordering.

#### Dealer Reports – For USA & Export

For dealers with involved vehicles, a listing has been prepared and will be available through GM GlobalConnect Maxis Field Action Reports or sent directly to export dealers. The Inventory tab of the dealer reports will contain VINs that apply to this recall. This information is intended to assist dealers with the **PROMPT COMPLETION** of these vehicles. The Customer In-Service tab will contain customer names and addresses from Motor Vehicle Registration Records. The use of such motor vehicle registration data for any purpose other than follow-up necessary to complete this recall may be a violation of law in several states.

#### Courtesy Transportation – For USA & Canada

Courtesy transportation is available for customers whose vehicles are involved in a product program and still within the warranty coverage period. See General Motors Service Policies and Procedures Manual for courtesy transportation program details.

#### Customer Notification

USA & Canada - General Motors will notify customers of this recall on their vehicle (see copy of customer letter included with this bulletin).

In order to ensure full protection under the emission warranty, and the right to participate in future recalls, the customer notification letter recommends that customers have their vehicles serviced as soon as possible. It also advises that failure to do so could legally be determined to be lack of proper maintenance.

Export - Letters will be sent to known owners of record located within areas covered by the US National Traffic and Motor Vehicle Safety Act. For owners outside these areas, dealers should notify customers using the attached sample letter.

In order to ensure full protection under the emission warranty, and the right to participate in future recalls, the customer notification letter recommends that customers have their vehicles serviced as soon as possible. It also advises that failure to do so could legally be determined to be lack of proper maintenance.

GM bulletins are intended for use by professional technicians, NOT a "do-it-yourselfer". They are written to inform these technicians of conditions that may occur on some vehicles, or to provide information that could assist in the proper service of a vehicle. Properly trained technicians have the tools, equipment, safety instructions, and know-how to do a job properly and safely. If a condition is described, **DO NOT** assume that the bulletin applies to your vehicle, or that your vehicle will have that condition. See your dealer for information on whether your vehicle may benefit from the information.



**We Support  
Voluntary Technician  
Certification**

# Emission Recall

## A242435780 Engine Spark Timing Following Auto Stop Event



June 2024

This notice applies to your vehicle, **VIN:** \_\_\_\_\_

Dear General Motors Customer:

This notice is sent to inform you that General Motors is conducting a voluntary emission recall that includes your vehicle.

**Reason For This Recall:** Your 2024 model year Buick Encore GX, Envista or Chevrolet Trailblazer, or Trax. vehicle, equipped with a 1.2L gas engine may have an engine control module that may not properly control engine ignition timing following certain Auto Engine Stop/Start events. If this were to occur, the Malfunction Indicator Lamp (Check Engine Light) would illuminate, and the engine may run rough or knock. In some cases, if the vehicle is driven with engine knock, engine damage could occur. Proper engine ignition timing control will resume following a subsequent Auto Engine Stop/Start event.

**What Will Be Done:** Your GM dealer will reprogram the engine control module. This service will be performed for you at **no charge**. Eligibility for this service will not be denied solely due to your 2024 model year Buick Encore GX, Envista or Chevrolet Trailblazer, or Trax vehicle having non-GM parts or repairs performed by outlets other than a GM franchised dealer.

**How Long Will The Repair Take?** Because of service scheduling requirements, it is likely that your dealer will need your vehicle longer than the actual service correction time of approximately 30 minutes.

**What You Should Do:** Please contact your GM dealer as soon as possible to arrange a service date. Instructions for making this correction have been sent to your dealer. Please ask your dealer if you wish to know how much time will be needed to schedule, process, and repair your vehicle.

If you have any questions or need any assistance, just contact your dealer or the appropriate Customer Assistance Center at the number listed below.

For the hearing or speech impaired, please contact our Customer Assistance Center using the Telecommunication Relay Service by dialing 711 then providing the appropriate Customer Assistance Center number for your vehicle.

Division	Number
Buick	1-800-521-7300
Chevrolet	1-800-222-1020
Puerto Rico – English	1-866-467-9700
Puerto Rico – Español	1-866-467-9700
Virgin Islands	1-866-467-9700

**Emission Law Information:** In order to ensure your full protection under the emission warranty made applicable to your vehicle by state and federal law, and your right to participate in future recalls, it is recommended that you have your vehicle serviced as soon as possible. Failure to do so could legally be determined to be lack of proper maintenance of your vehicle. Also, your vehicle may fail a state or local emission inspection if this recall is not accomplished.

---

### IMPORTANT MESSAGE FOR CALIFORNIA RESIDENTS

The California Air Resources Board (CARB) requires vehicle emission recalls be completed prior to California registration renewal. Uncorrected emission recalls will result in the inability to renew your California vehicle registration.

At the time of emission recall completion, your California dealer will issue a "Proof of Correction Certificate". Keep this certificate and, if required, present it to the Department of Motor Vehicles when renewing your California registration as proof of recall completion.

---

We are sorry to cause you this inconvenience; however, we have taken this action in the interest of your continued satisfaction with our products.

## **Emission Recall**

A242435780 Engine Spark Timing Following Auto Stop Event



Regina A. Carto  
Vice President  
Global Product Safety and Systems

GM Recall: A242435780